

# Green Cities

PPPM 445 CRN 42404

Summer 2021

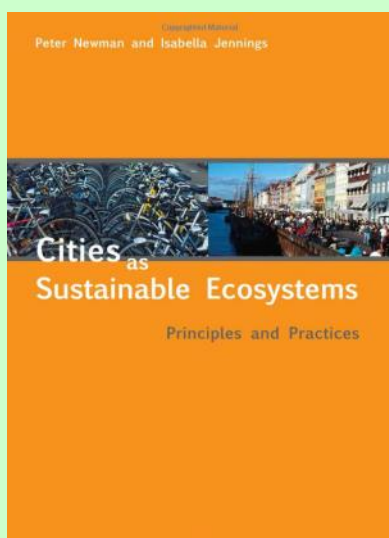
Tuesdays 12:00-15:50

June 21—August 15

Ric Stephens, Instructor

[ric@uoregon.edu](mailto:ric@uoregon.edu)

(503) 501-7397



## Textbook

Newman, P. & Jennings, I.  
(2008) *Cities as sustainable ecosystems*. Washington: Island Press.

## Course Description

Examines the history and future of the interface between urban growth and environmental concerns, and the technological, social, and political forces that continue to shape it.

## Class Format

Class sessions will involve the presentation of material by the instructor; class discussion; guest speakers and Zoom meetings with international experts. Students should be prepared to participate actively in classroom discussions. The Zoom meetings will be scheduled at various times to provide an opportunity for students to schedule around other commitments. Zoom meetings will be recorded so students may view asynchronously. This summer we will be studying urban ecology and its relationship to sustainable development, urban resiliency, and regenerative design.

## Required Reading

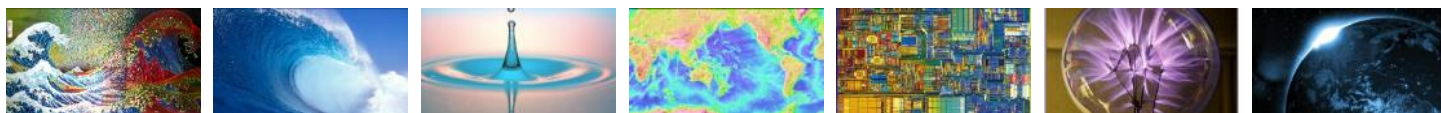
There is one required textbook: *Cities as Sustainable Ecosystems: Principles and Practices*. The textbook will be available online. Topics include:

- 📖 Vision
- 📖 Economy & Society
- 📖 Biodiversity
- 📖 Ecological Footprints
- 📖 Modeling Cities on Ecosystems
- 📖 Sense of Place
- 📖 Empowerment and Participation
- 📖 Partnerships
- 📖 Sustainable Production and Consumption
- 📖 Governance and Hope

In addition to the textbook above, students are required to read all assigned materials posted on the course Canvas and project websites.

## Course Grades

Online Quizzes (4)	40%
Public Hearing Simulation	20%
Informational Video	20%
Citizen Involvement Project	20%



## Assignments

2021 Summer quarter “Green Cities” students will help organize, conduct and analyze citizen involvement program with the City of Talent, Oregon Chapter of the American Planning Association, Sustainable Cities Institute, and the Oregon Department of Land Conservation and Development. [see project website for more information]. An alternative assignment for the citizen involvement project is to write a research paper. [see next page] Students will also prepare short informational videos on individual topics.

## Project Website

We have a project website for the course projects at <https://blogs.uoregon.edu/urbanecology/>

## Schedule

An outline for the class including the assigned 📖 readings, due dates for assignments, and quizzes is given below. Additional readings will be assigned throughout the term on **Canvas**. The schedule may be revised to accommodate guest speakers and Zoom videoconferencing. We consider an optional extracurricular field trip. All research and media will be on our project website.

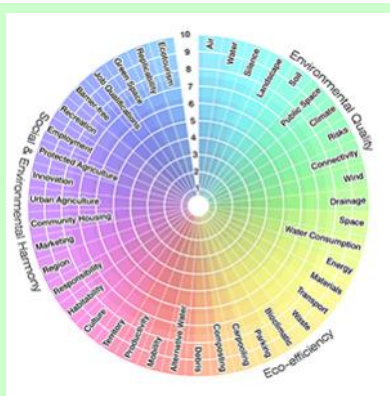
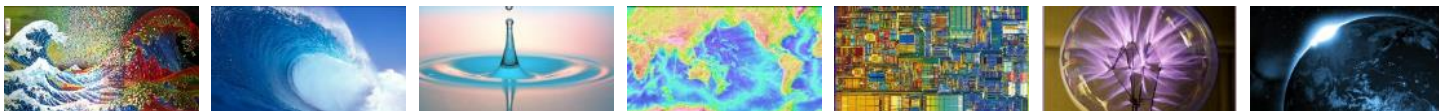
**The dates and topics may be adjusted throughout the course. Please refer to the CANVAS syllabus and project website for up-to-date scheduling, assignments and announcements.**



### Urban Ecology

The project website will include course description, contacts, resources, and student projects. <https://blogs.uoregon.edu/urbanecology/>

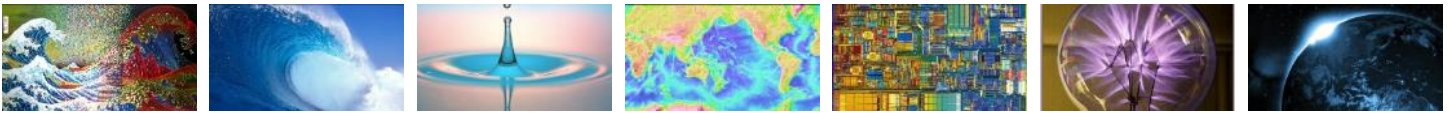
Date	Canvas Page	Topic
Jun 22	1	Course Overview and Major Concepts / Vision
Jun 29	2	Mechanical, Systems & Planning Models / Economy and Society / Biodiversity   <b>Quiz 1</b>
Jul 6	3	Ecological Footprints / Modeling Cities on Ecosystems
Jul 13	4	Sustainable Development, Urban Resilience & Regeneration   <b>Quiz 2</b>
Jul 20	5	Empowerment and Participation <b>Public Hearing Simulation</b>
Jul 21		<b>Urban Farm Tour / Drone Photography/Videography</b>
Jul 27	6	Sense of Place   <b>Quiz 3</b>
Aug 3	7	Partnerships / Sustainable Production and Consumption
Aug 10	8	Governance and Hope / Trends, Projections, Predictions   <b>Quiz 4</b>
Aug 15	9	<b>Citizen Involvement Questionnaire</b> <b>Informational Video</b>



## Multi-media Presentation

Your multi-media presentation must be a 3 to 4-minute video. This is a brief summary of your research topic that allows you to share critical concepts and/or projects to the class and public. It may be about your research topic only, or you may wish to focus on your assigned project recommendations.

Criteria	Unsatisfactory	Needs Signif. Improv.	Fair	Good	Very Good	Comment
<b>CONTENT: 70% of research paper grade</b>						
<b>Content criterion #1</b> Introduction / Background Relevance Application / Replication						<b>Alternative Assignment</b> Students should select a research topic with the following attributes: 1. Related to “green cities” and your assigned project. 2. An area of study that the student feels passionate about 3. Relevant to the student’s professional interest 4. Feasible within the constraints of the assignment format You must select a topic and receive approval from the instructor prior to the 4th class.
<b>Content criterion #2</b> Conclusions and ten (10) Recommendations						
<b>WRITING: 30% of grade</b>						
<b>Logical structure</b> Introductory section to orient reader Clear sequence of sections Clear structure to sections Uses subheadings effectively Uses paragraphs to support structure Clear topic sentences Links between paragraphs Links within sections						<b>Format</b> Students are free to format their papers however they chose. If there is concern about an unusual format, please contact the instructor. Digital file name: <i>lastname.pdf</i> or <i>lastname.doc</i> .
<b>Professional approach</b> Objective: avoids bias & prejudice Assertions supported by evidence (references, clear information, citations) and not just opinion High quality sources						
<b>Appropriate voice</b> Appropriate use of active and passive voice Awareness of audience						<b>Length / Size</b> The paper must be between 1,200–2,000 words <b>total</b> including 10 recommendations for your assigned project. This is approximately 3 to 5 pages. Shorter or longer papers will not receive full credit.
<b>Grammar</b> Noun verb agreement Correct use of tense Complete sentences Appropriate punctuation No run on sentences Other grammar issues						
<b>Referencing</b> <b>APA Format</b>						<b>References</b> Research papers must have a minimum of 10 references which may include interviews and digital media. Please use the APA format for references. There are many online tools to help you correctly cite your paper such as <a href="http://www.citationmachine.net/apa/cite-a-book">http://www.citationmachine.net/apa/cite-a-book</a>
<b>Professional Presentation</b> Don't overuse bullets Professional format (page #s, clear print, clear graphics) Free of handwritten edits Use graphics to support text, but not replace it						
						<b>Due Date</b> Papers and digital presentation media are due on <b>August 15<sup>th</sup></b> .



**Public Hearing Simulation**  
Lane County Harris Hall  
125th East 8th Ave, Eugene

## Academic Policies

### Professional Practice

Students should treat each other and the instructor with the professional courtesy and respect expected in a workplace. All communications relating to this course and all work turned in for this course should reflect professional standards in tone, presentation, formatting and spelling.

The classroom is a place of focuses learning. This requires that students arrive on time, stay until the end of the class period, do not disrupt the class by leaving the room temporarily, and refrain from non-learning activities. Students who fail to adhere to these guidelines will be asked to leave for the remainder of the class session.

### Documented Disabilities

Students who have a documented disability and anticipate needing accommodations in this course should make arrangements to see the instructor as soon as possible. They should also request that the Counselor for Students with Disabilities send a letter verifying the disability.

### Incomplete

Students are strongly discouraged from requesting an incomplete. In accordance with University regulations, an incomplete will only be given when "the quality of work is satisfactory but a minor yet essential requirement of the course has not been completed for reasons acceptable to the instructor." In addition, students should consult the university policies regarding academic practices (<http://libweb.uoregon.edu/guides/plagiarism/students/>).

### Academic Misconduct

You are expected at all times to do your own work. Copying content from other students and submitting it as your own work is grounds for failing the class. The University Student Conduct Code (available at [conduct.uoregon.edu](http://conduct.uoregon.edu)) defines academic misconduct.

### Plagiarism

Students should properly acknowledge and document all sources of information (e.g. quotations, paraphrases, ideas) and use only the sources and resources authorized by the instructor. If there is any question about whether an act constitutes academic misconduct, it is the students' obligation to clarify the question with the instructor before committing or attempting to commit the act. Additional information is available at: [www.libweb.uoregon.edu/guides/plagiarism/students](http://www.libweb.uoregon.edu/guides/plagiarism/students).

### Make-up Exams: Final Exam

Students must take the final exam to receive a grade in the course. The date and time for the final exam will not be changed to accommodate scheduling conflicts. Final exams will not be given early under any circumstances. A make-up final exam will be scheduled for students who miss the regularly scheduled final exam due to serious illness or family emergency.

### Inclusion Statement

The School of Architecture and Allied Arts is a community that values inclusion. We are committed to equal opportunities for all faculty, staff and students to develop individually, professionally, and academically regardless of ethnicity, heritage, gender, sexual orientation, ability, socio-economic standing, cultural beliefs and traditions. We are dedicated to an environment that is inclusive and fosters awareness, understanding, and respect for diversity. If you feel excluded or threatened, please contact your instructor and/or department head. The University Bias Response Team is also a resource that can assist you. Find more information at their website at <http://bias.uoregon.edu/index.html> or by phoning 541-346-2037.