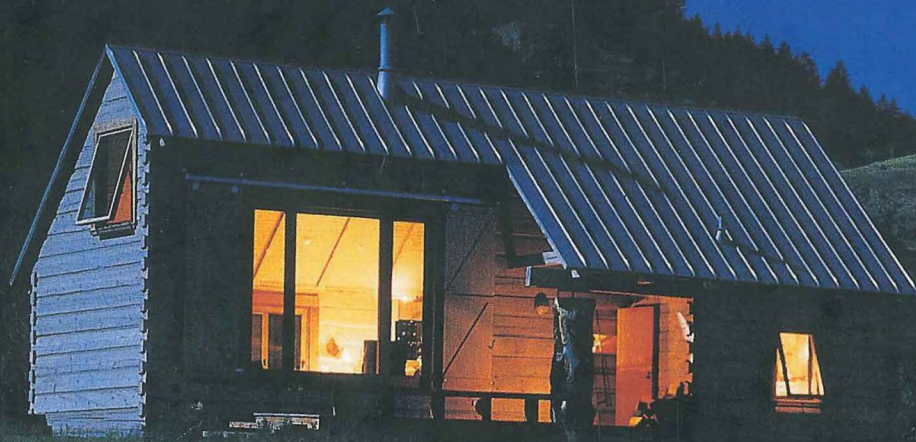


THE CABIN



Inspiration
for the
Classic American
Getaway

DALE MULFINGER AND SUSAN E. DAVIS

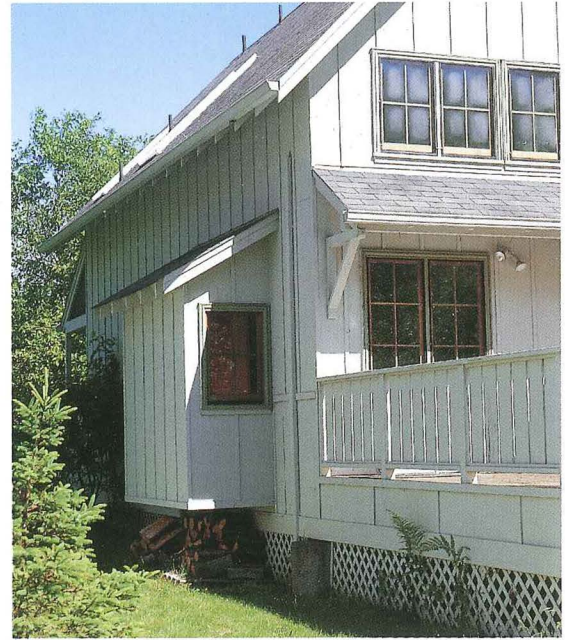
Planning a Community

NOT ALL CABINS ARE INDIVIDUAL DESIGNS built for one client on a particular site. Some work just as well as part of an enclave of similar structures.

One such development is Quiet Water on the Yachats River, located a short distance from the Oregon coast.

Here, architects Rob Thallon and David Edrington designed an environmentally sensitive community of 32 vacation retreats. Located in a preserved alder grove, the community also shares a swimming pool and tennis and basketball courts. The cabins are built in four clusters of eight, with each unit sharing a public commons while opening to private views of nature and the river beyond. Thus all the cabins have a distinct front and back, with front porches offering social space on the commons and a rear deck overlooking the river.

The cabins, which are similarly laid out, are all deep and narrow, with few side windows for privacy. The living room is open to the second floor, where clerestory windows increase the light below. Window bays in the living room and dining area catch glimpses of the river and provide comfortable sleeping niches. The second-floor sleep-



THOUGH THE EXTERIOR IS EXPRESSED IN SIMPLE plywood and battens, this basic construction did not prevent the project from winning an award of merit from *Sunset* magazine in 1985.

THE MAIN ROOM IS DEEP AND NARROW and open to the second floor. The clerestory windows bring in light that wouldn't reach lower windows. Plywood walls with battens create a rich wooden environment at a relatively low cost. The sleeping nook to the right essentially adds another bed to the cabin.



THE COMMONS SPACE IS SHARED BY EIGHT CABINS, each with a porch facing it. Children can play safely in this area as parents watch or a neighborly bocce ball game ensues.



SHARING THE LAND

Like people in a condominium community, some cabin owners enjoy shared amenities. There are values in such a shared arrangement. In this case, sharing the expense makes waterside property more affordable. Also, there are practical, day-to-day considerations: Everybody knows what color gray stain they need, everybody shares a pool and tennis courts, everybody pays the same amount each month for maintenance and upkeep—and, therefore, everybody can devote more of his retreat time to actual retreating, rather than to mowing, painting, and roofing.

IN A SHARED COMMUNITY, PEOPLE CAN DEVOTE MORE OF THEIR RETREAT TIME TO ACTUAL RETREATING.

ing and bathing rooms are tucked under the roof to enhance the cabin feeling and reduce the exterior scale.

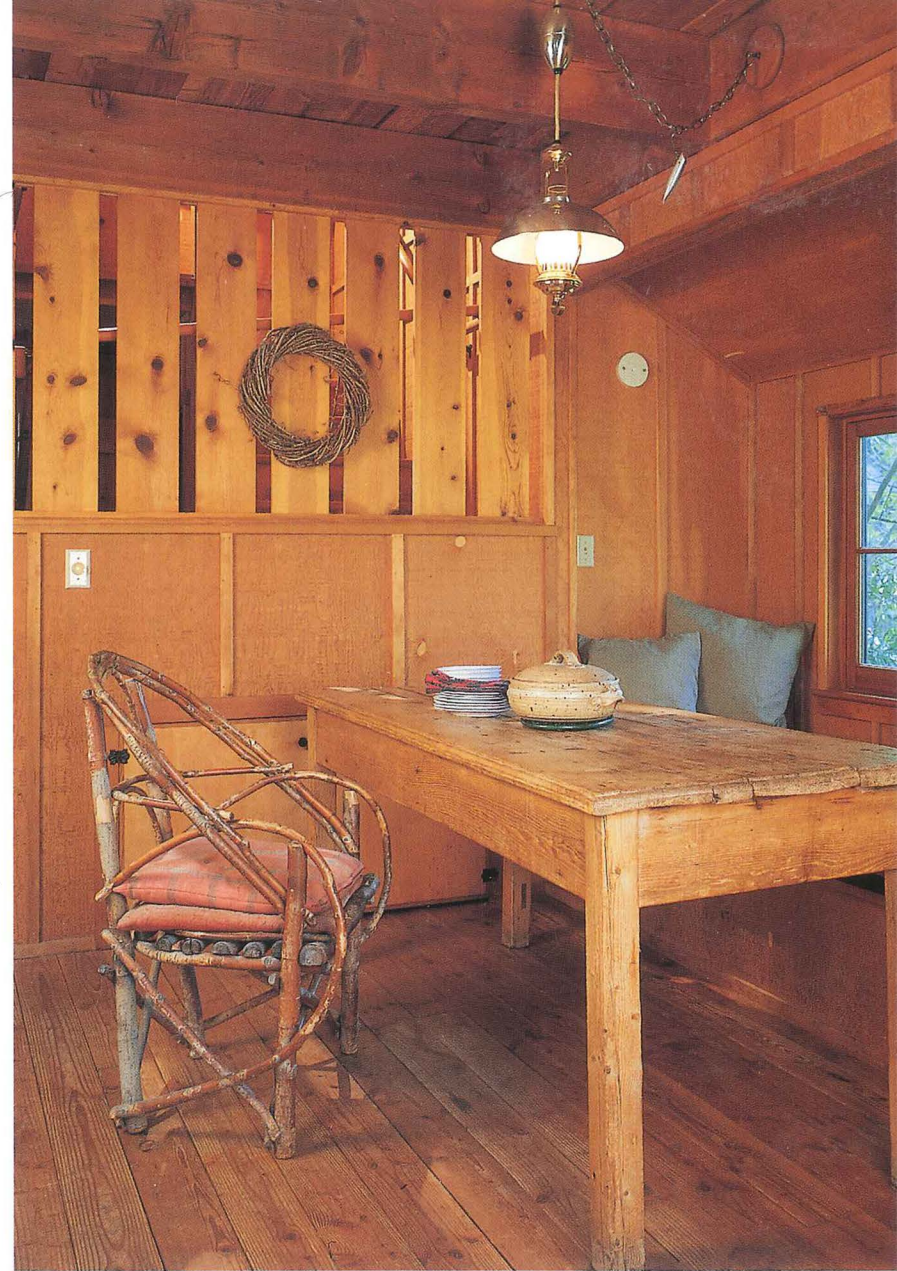
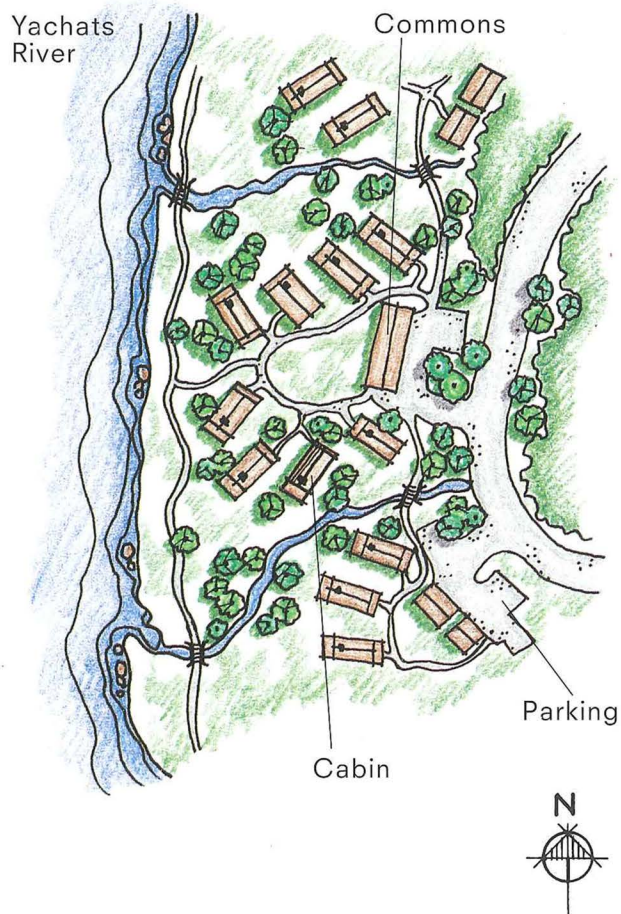
The character of the cabins comes from a combination of simple shapes, good proportions, and warm natural colors that blend nicely with nature. The exterior is plywood with thin, vertical battens in muted gray. The interior features fir plywood walls and fir floors. Interior doors and cabinets are made from fir planks. Windows are a sort of casement and were tailored to the project: As in early American cabins, these are hinged to swing to the inside. Hardware is common farm and gate material in black, which adds a simple rustic character to the interior.

THE KITCHEN, WITH ITS PLAIN OPEN SHELVING and exposed floor joists overhead, gets the job done without much fuss. It's tucked under the sleeping loft. Behind the kitchen is a bathroom.



A CABIN NEIGHBORHOOD

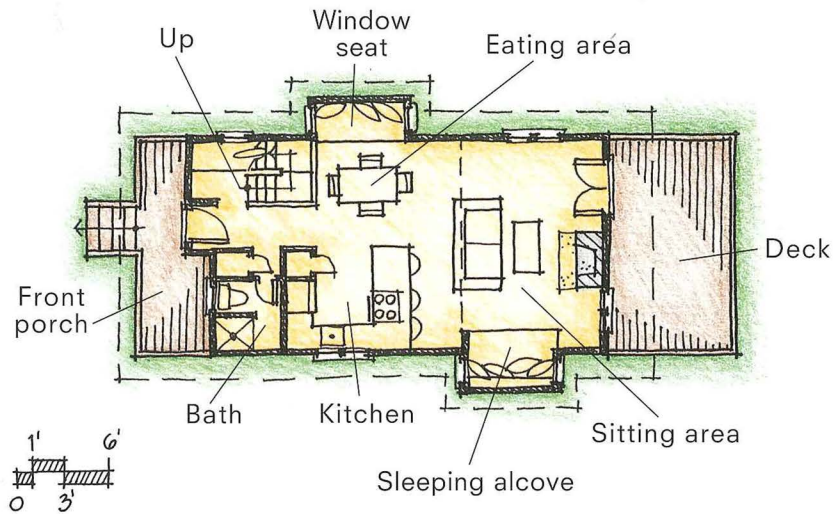
There are all sorts of resort developments, many of them built around water. Some are miniature cities, such as Seaside, Florida. Others, like Quietwater, are less ambitious, more unassuming. In either case, people learn to co-exist with strangers and to share commons areas, waterfront, and the pool.



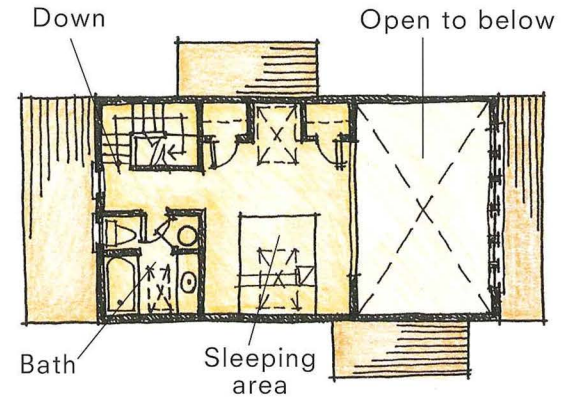
OLD-STYLE CASEMENT WINDOWS THAT SWING INWARD to stay out of the wind and inclement weather contribute to the timeless character of the enclave. Here, a table is pushed up to the sleeping nook to create an ad hoc breakfast area.

DISTINCT FRONT AND BACK

FIRST FLOOR



SECOND FLOOR



IN THE UPSTAIRS BEDROOM LOFT
a bed rests against the cozy
kneewall. A skylight drops light
into the loft between his and
her closets.