

SUNSPACES • GREAT NEW LAMPS • ATTIC REMODELS

HOME

CREATIVE IDEAS FOR HOME DESIGN

MARCH 1988 \$1.95

LANDSCAPING FOR CURB APPEAL



Slate steps walk you up
to a remodeled Oregon home

WELCOMING SIGHTS

An entryway should be more than just the path to your door. In these four examples, imaginative plantings combine with a mix of materials — including slate, brick, glass block and concrete — to create character and curb appeal. By Deborah J. Ely

SOME PEOPLE WANT an entry that shields them from the world; others crave a showy yard that will put their best foot forward. In either case, it's important to create a balance between private and public space: Too much screening and your home can begin to resemble a fortress, too little and you may appear to live in an industrial park. These four projects achieve that balance.

When Meer Deiters and Tom Faxon remodeled their Eugene, Oregon, home they decided also to revamp the overgrown, grassy slope fronting it. They contacted landscaping contractor Guy Gargiulo, who solved the

problem by designing a series of terraces for them.

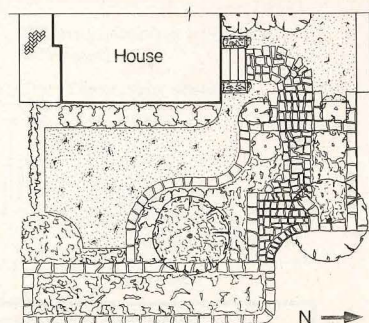
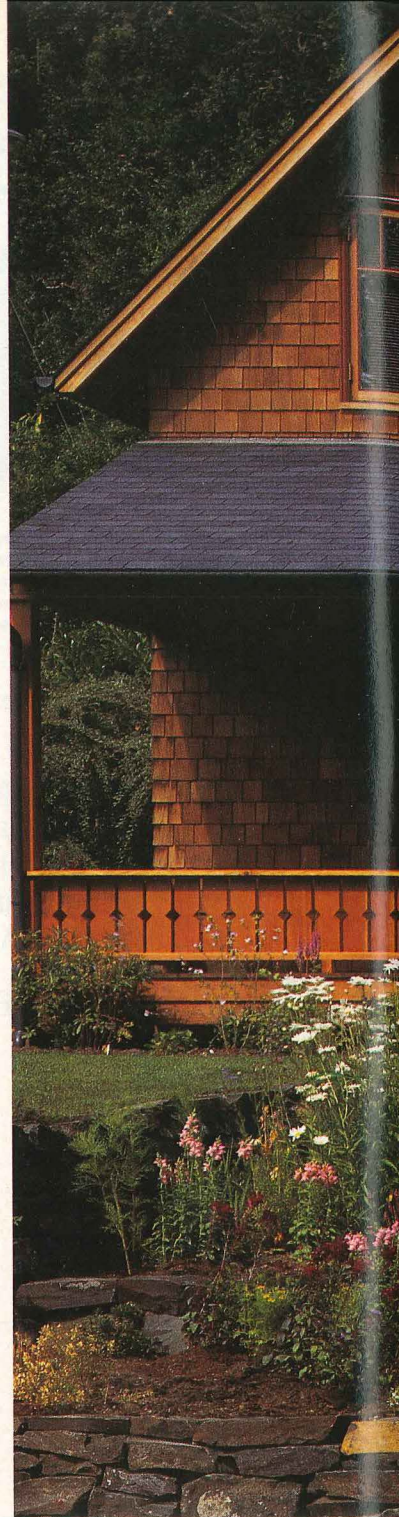
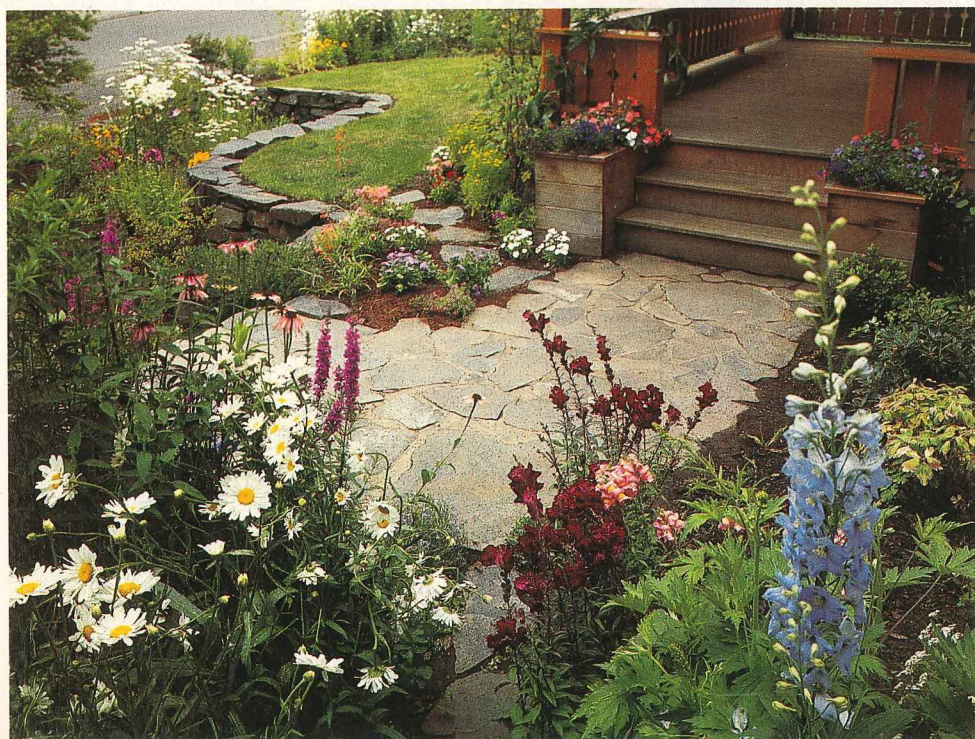
"It's important to engineer a site so that its slope is broken correctly," emphasizes Gargiulo. "You need to have a feel for where it naturally breaks." The terraces, set on a 4- to 5-percent grade, are defined by mortarless slate retaining walls set into the appropriate breaks in the slope. Gargiulo added poured concrete steps and paths, veneering them with 1-inch-thick slate.

Tom Faxon designed the major drainage system, which collects hillside runoff from behind the house and shunts it to the street. A

skilled woodworker, Faxon also carved the detailing on the porch's railings.

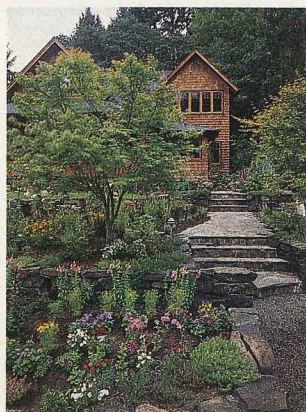
Meer Deiters chose the many varieties of perennials herself and planted them with the help of a friend. Gargiulo's original design for the garden had been more formal, with clipped hedges regimenting the masses of perennials. The modified design, much more like a cottage garden, ultimately suits the home's gingerbread details better.

From the street, the house invites the visitor up the steps, past two Japanese maple trees. Hansel and Gretel would have found the invitation irresistible.





Above: Slate-veneered concrete steps and path lead up to the porch. The concrete ramp at right is for owners' bikes. **Opposite:** Colorful perennial plantings include delphinium, purple coneflower (*Echinacea purpurea*), daisies and snapdragons (*Antirrhinum majus*).



Far left: Curving retaining walls combined with the colorful assortment of perennials help to create an informal atmosphere.

Left: Twin Japanese maples (*Acer palmatum*) add balance to the entry, which is terraced along natural breaks in its slope.