

## Waldorf Arts and Performance Hall





# Waldorf Agriculture and Education Program





# Layout Conception Design of Waldorf School Site

“The human being is a threefold being of spirit, soul, and body whose capacities unfold in three developmental stages on the path to adulthood: early childhood, middle childhood, and adolescence.” - Rudolf Steiner



## The Green Roof

Bring the nature closer to people, the design of the green roof allows people to move from ground to the very top of the roof top, creating a philosophical experience through the path. The view of the city, the mountain, and the river can be seen through out the journey.

## The Botanic Garden

Hands on experience with the plants, those that came from far away, or those that we seen everyday. The world is within the reach of simply open your hands and touch it. The garden provides opportunity for people from every age to learn the beauty of what nature can provide.

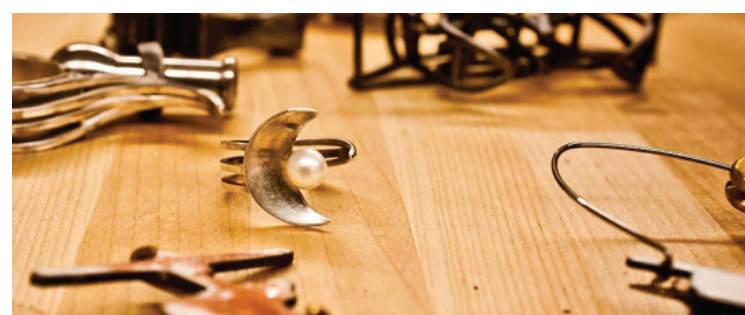


## The Performance Hall and Art Gallery

It is culture we bind us together, no matter where we came from. Arts, Performance, Music, as a city of creativity, the Performance Hall provides a stage for creative community to showcase their creativity. The space supports both the public use and for the School of Waldorf for display and performing arts.

## The Workshop

Incubator for many creative works, the workshop supports local artist to start their creative work in the early stage, the space also support the students from Waldorf school for teaching and learning how to use the tools to make the imagination come true.









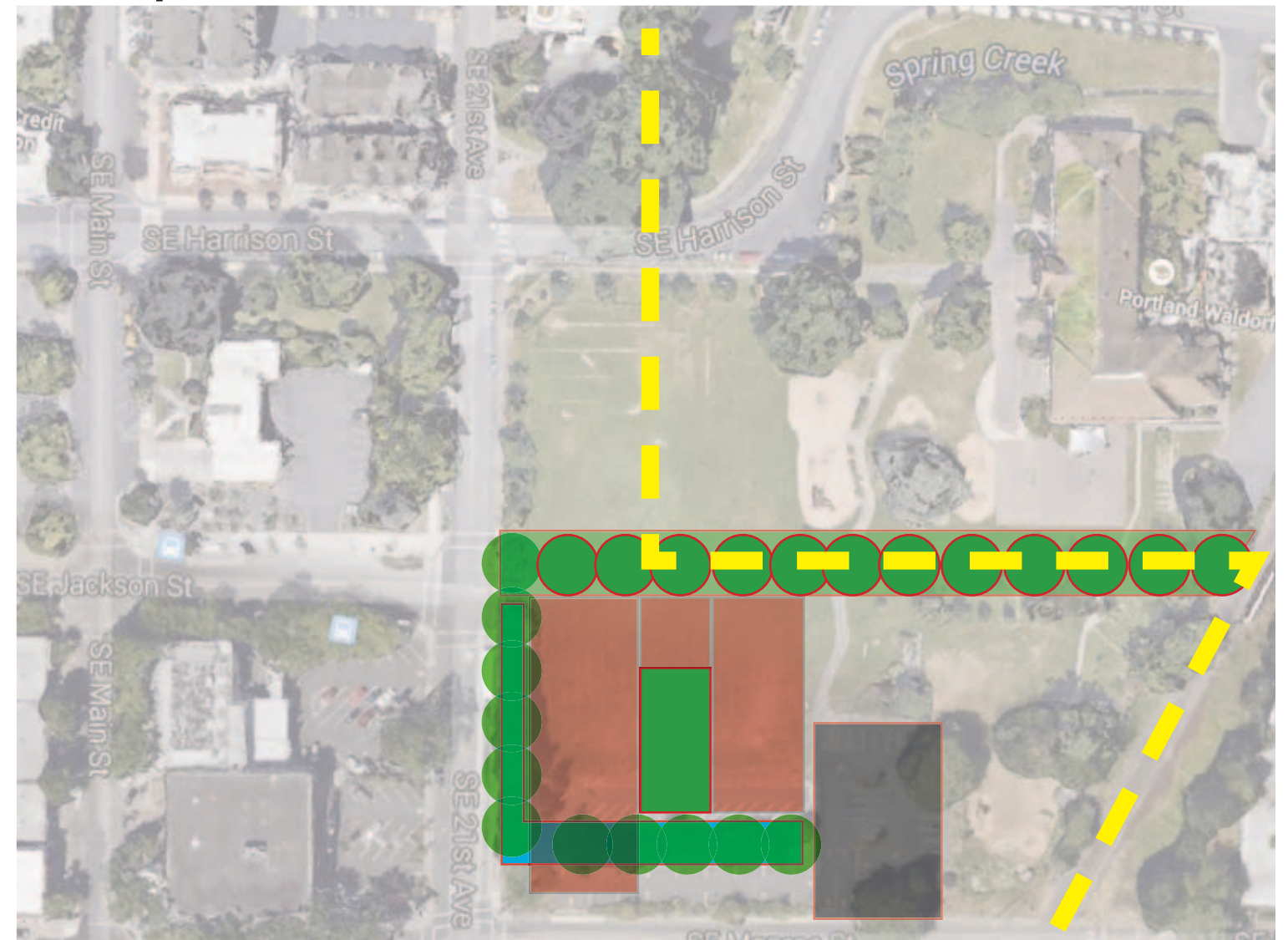
“The process by which this knowledge is learned, through the creativity of the teachers who become the “authors” of each subject, must meet the inner need in the child for true authority and provide a secure basis for the child to reach out in the world.” - The Waldorf School







## Existing Condition



-  Existing Storm Water Drainage
-  Proposed Site
-  Existing Greenery
-  Existing Creek

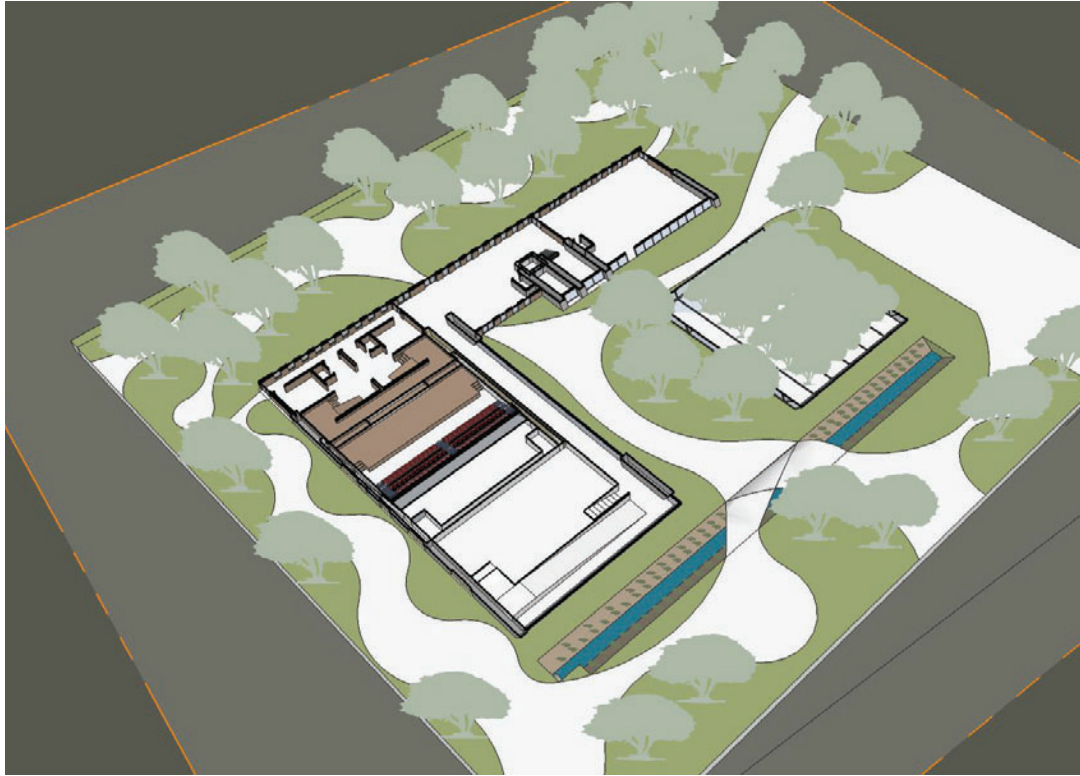
## Proposed Plan



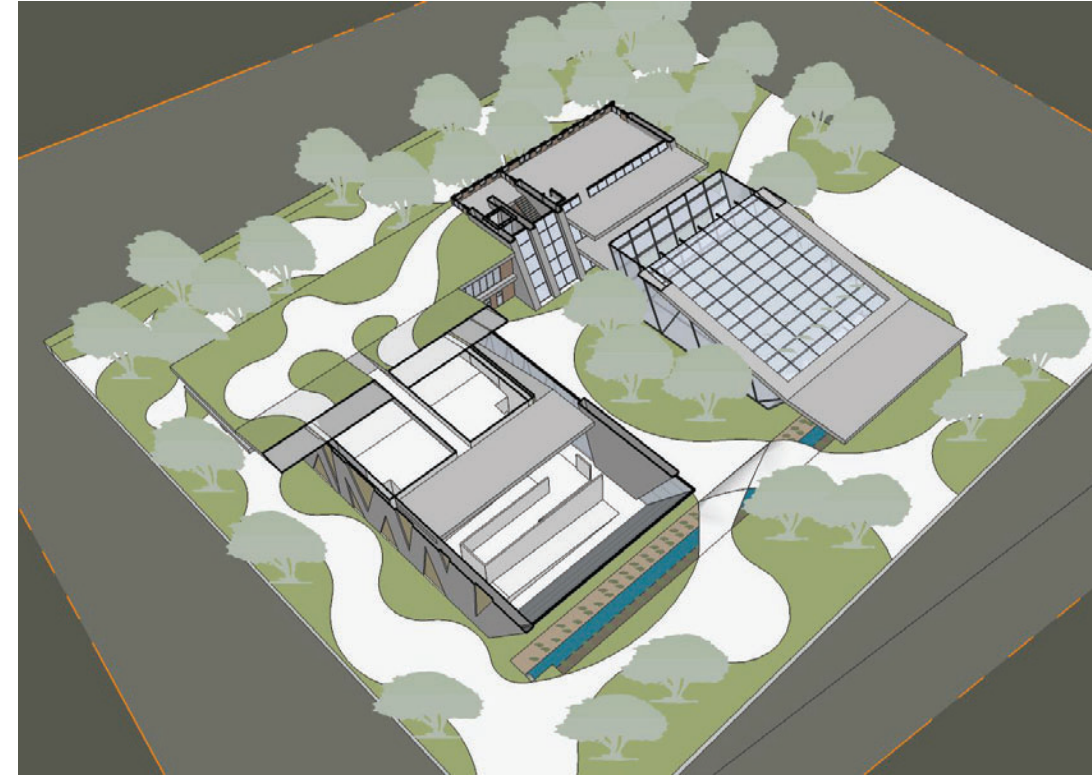
-  Continue Existing City Grid
-  Proposed City Green Belt (See Master Plan)
-  Proposed Building Area
-  Preserving Parking (Partial)
-  Proposed Community Garden
-  Additional Greenery



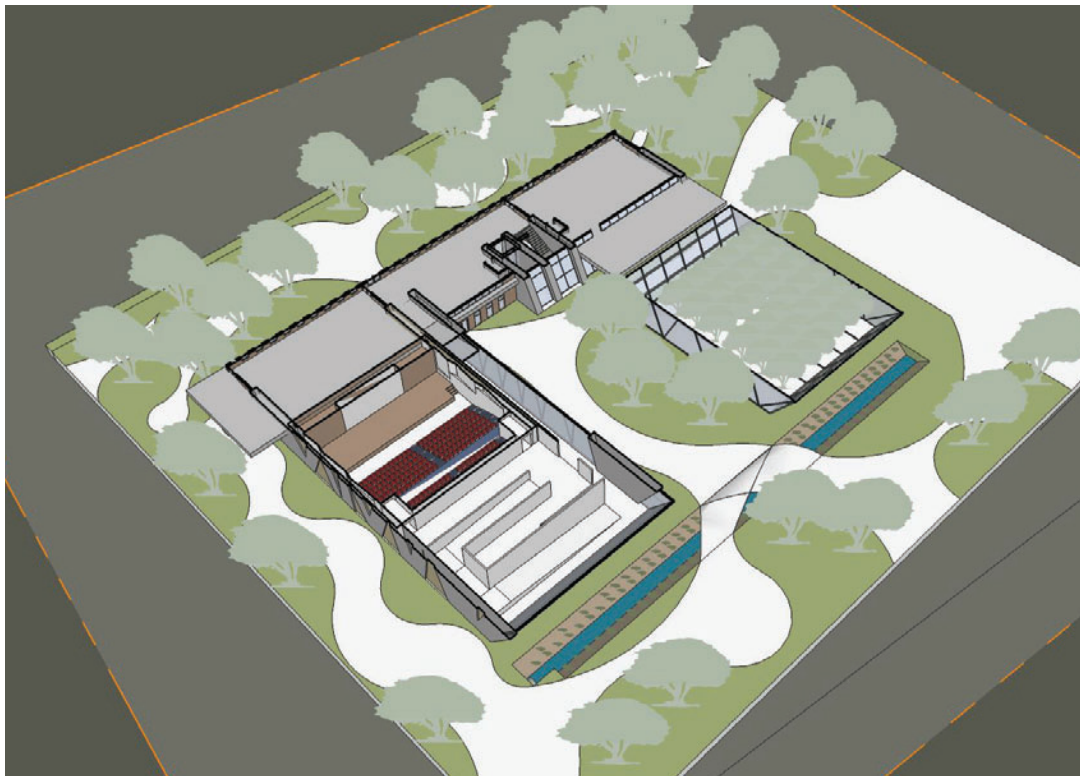
## Perspective Plans



1st Floor



3rd Floor



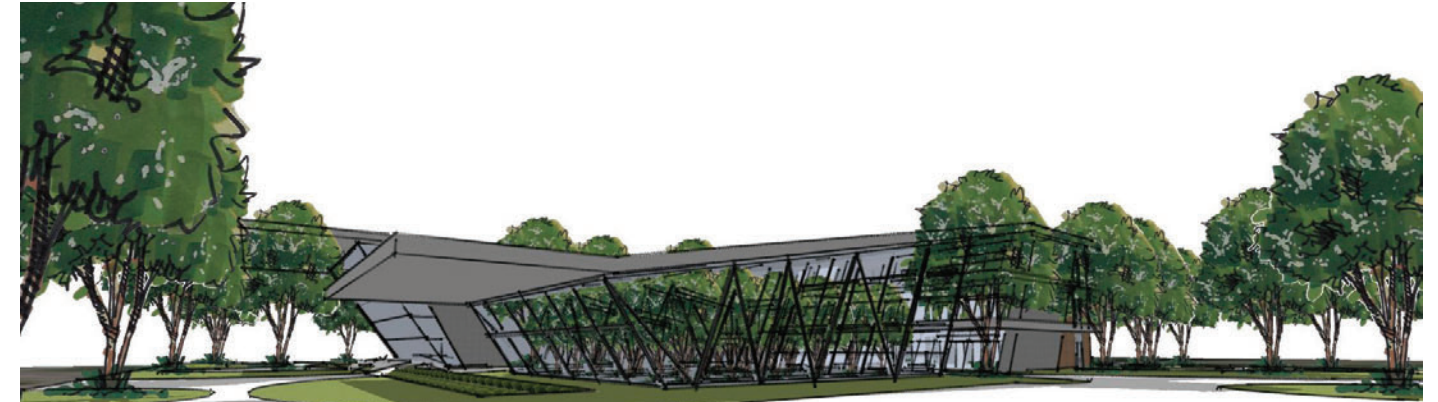
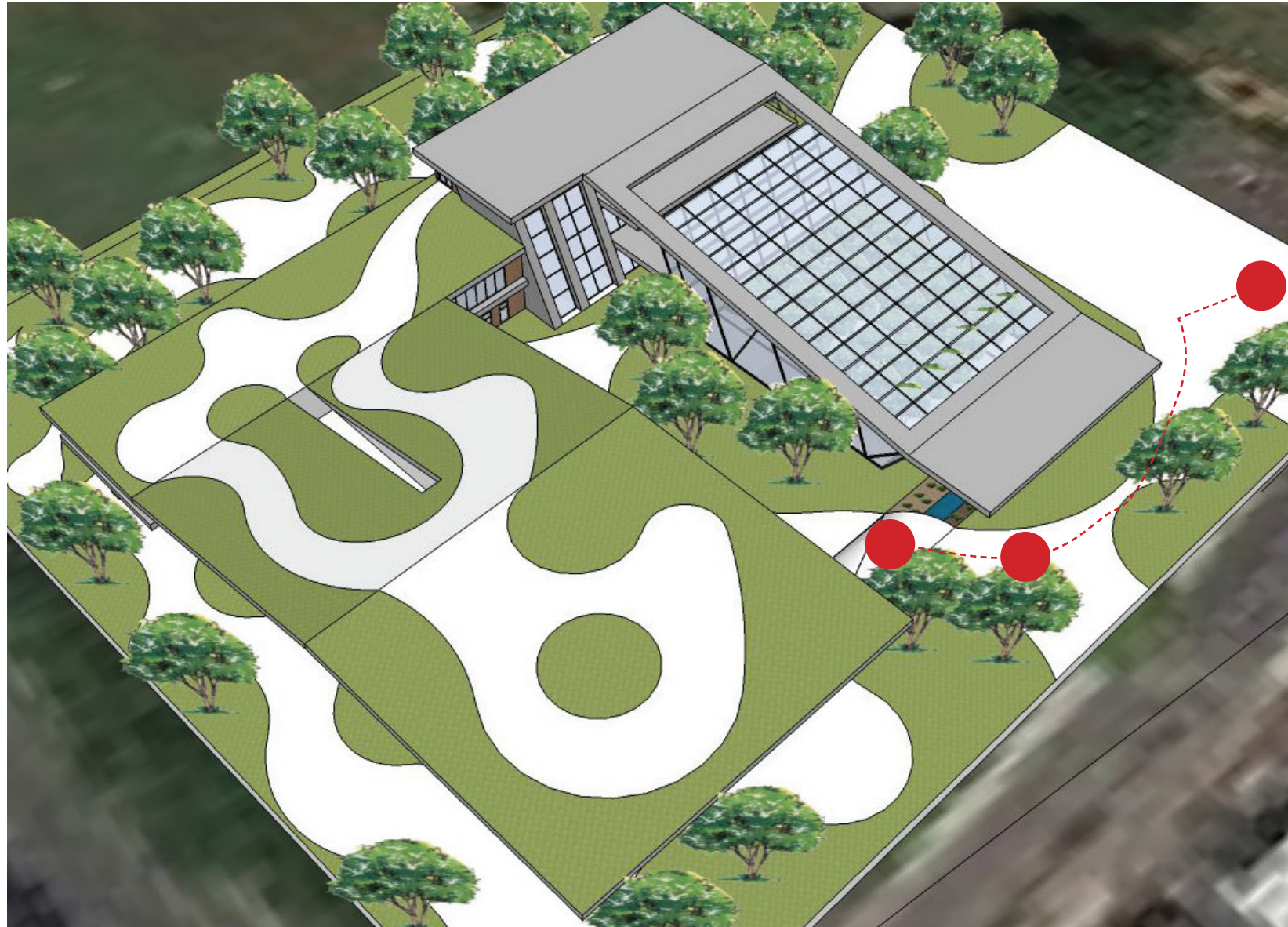
2nd Floor



Birds Eye



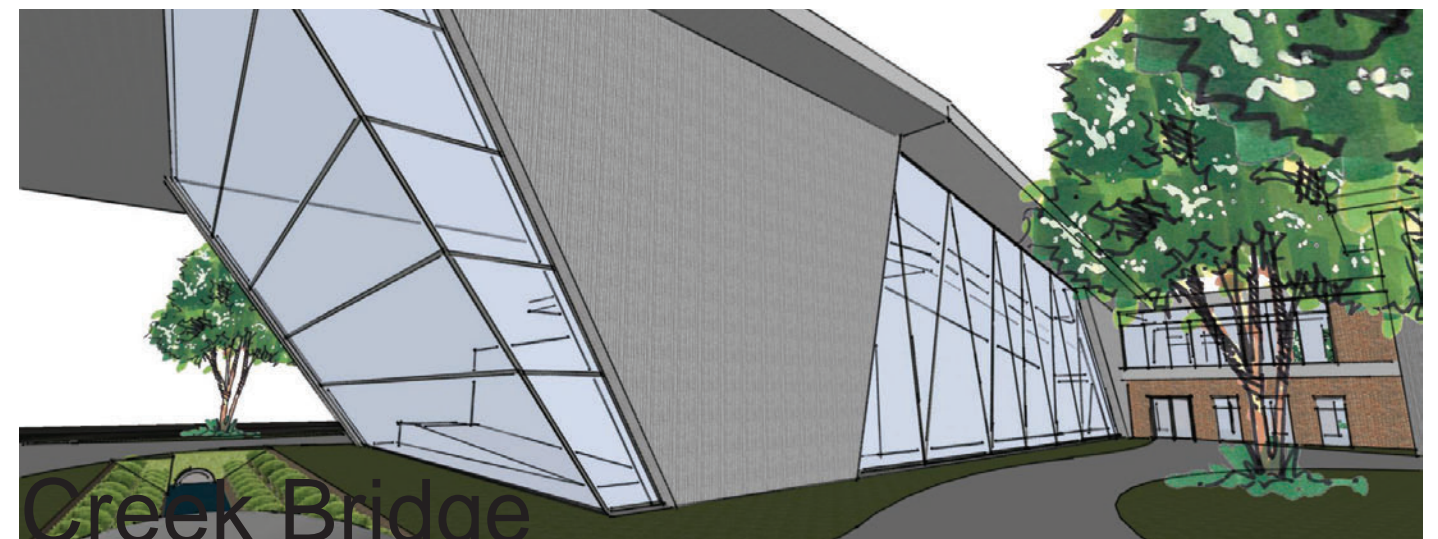
# Layout Conception Design of Waldorf School Site



Parking Entrance



Entrance Courtyard



Creek Bridge



## Layout Conception Design of Waldorf School Site

