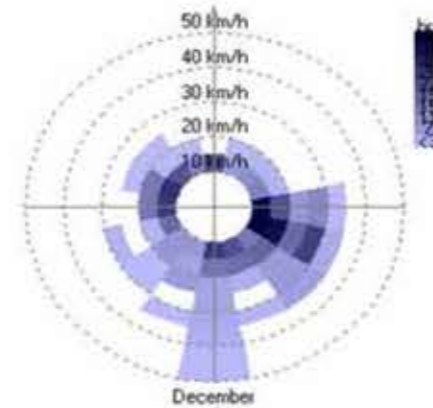
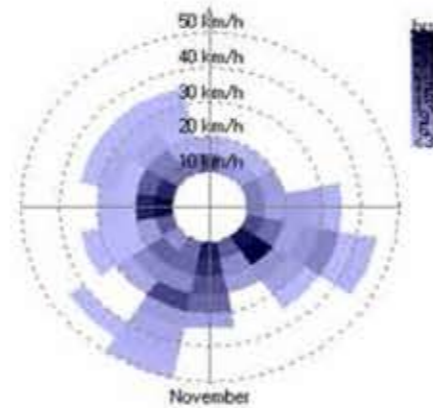
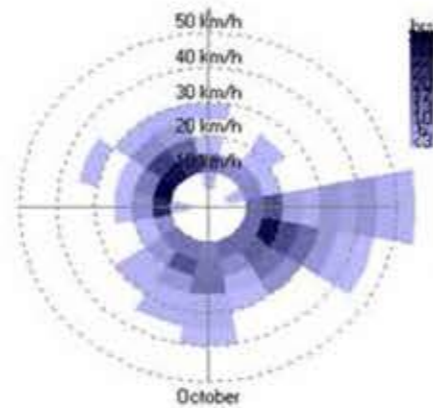
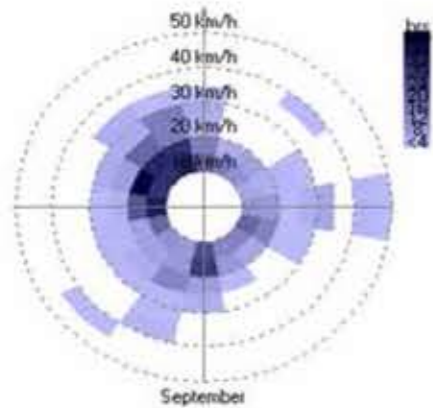
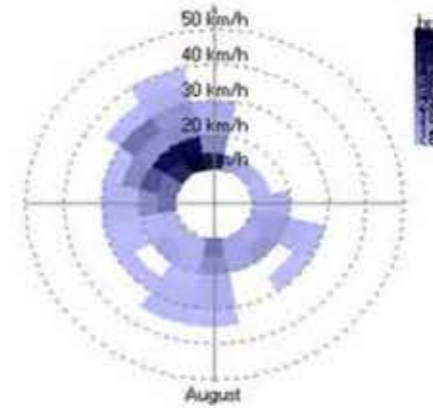
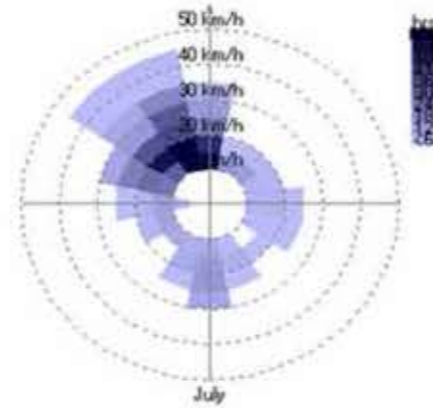
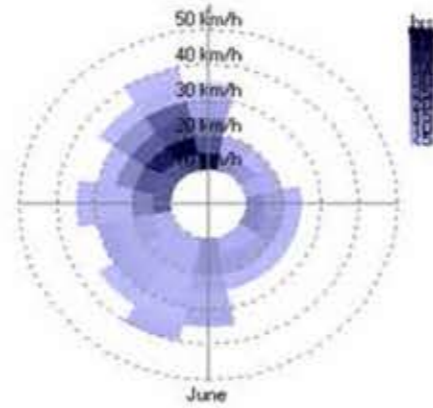
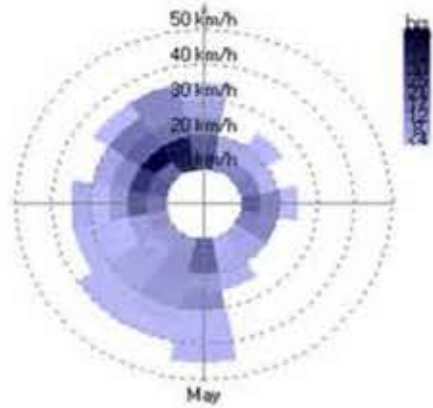
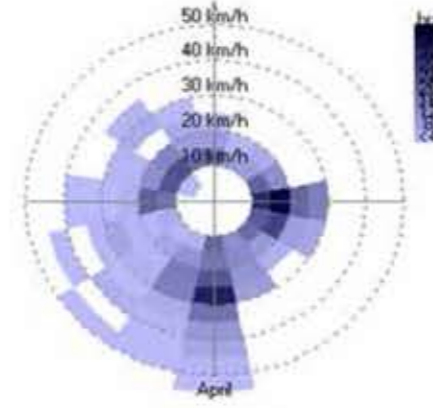
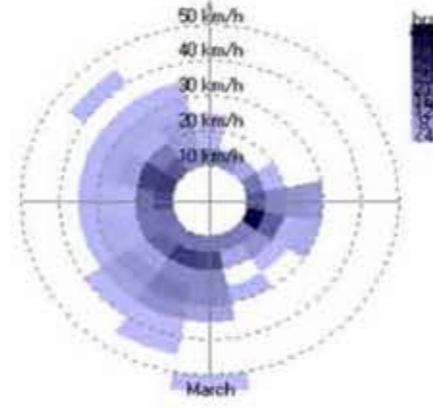
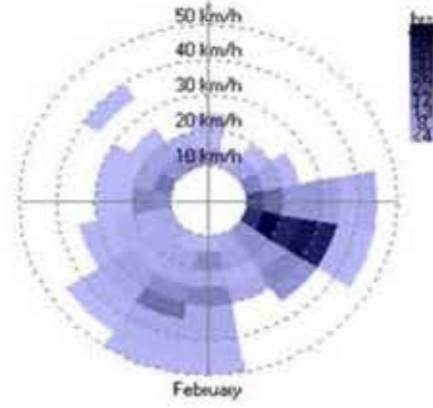
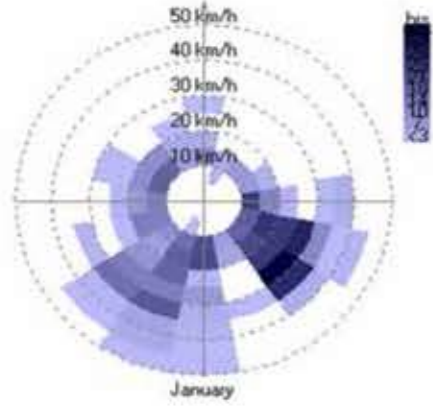


NATURAL ENVIRONMENT: Wind

Windrose(monthly)



Windrose information:
Windrose information shows speed and direction of prevailing winds in Milwaukie, Oregon.

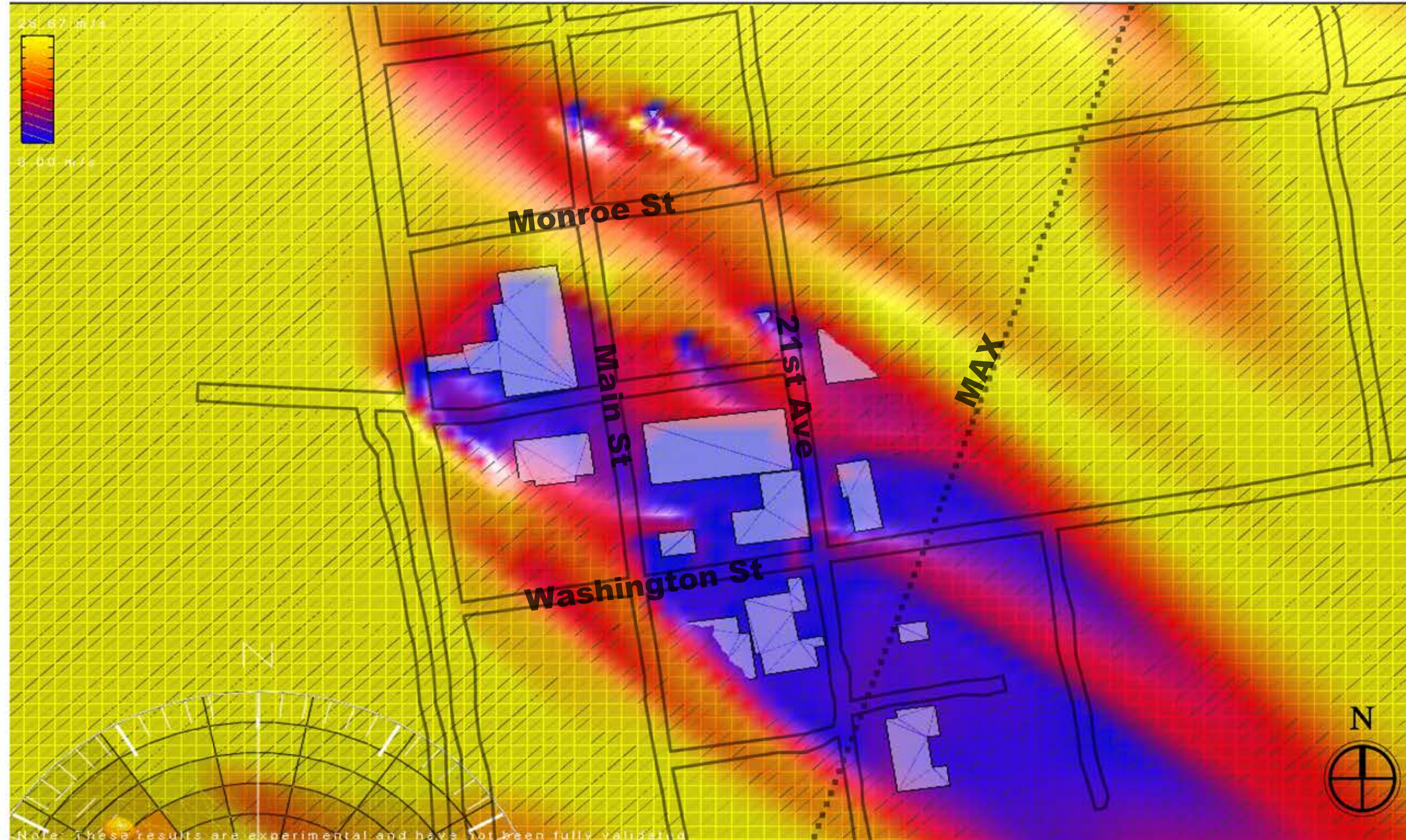
Seasonally wind direction vary more than intensities.

Windest Month:
The windest month in Milwaukie is April and October



NATURAL ENVIRONMENT: Wind

Wind-analysis(summer)



Windanalysis:
The picture shows the wind speed of the downtown area in summer. The wind direction in summer is north-west. The highest speed which is yellow in the picture is about 45km/h. The lowest speed which is blue in the picture is about 5km/h.

Design suggest:
Do not put block the wind from the north-west.

Note: These results are experimental and have not been fully validated.

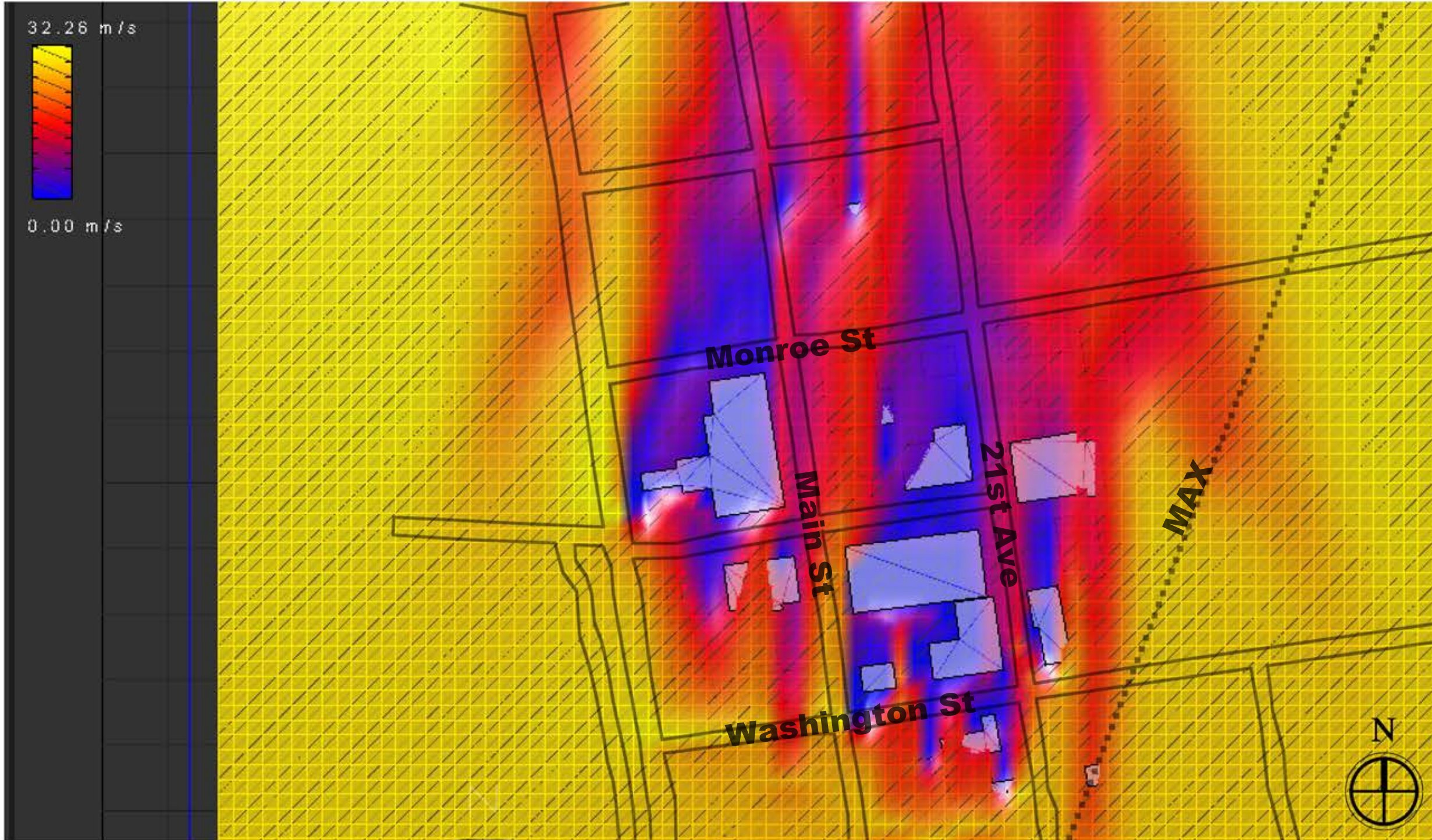
Mubai Chen



MILWAUKIE
Dogwood City of the West

NATURAL ENVIRONMENT: Wind

Wind-analysis(winter)



Windanalysis:

The picture shows the wind speed of the downtown area in winter. The wind direction in summer is south. The highest speed which is yellow in the picture is about 50km/h.

The lowest speed which is blue in the picture is about 5 km/h.

Design suggest:
Block the wind from the south.

