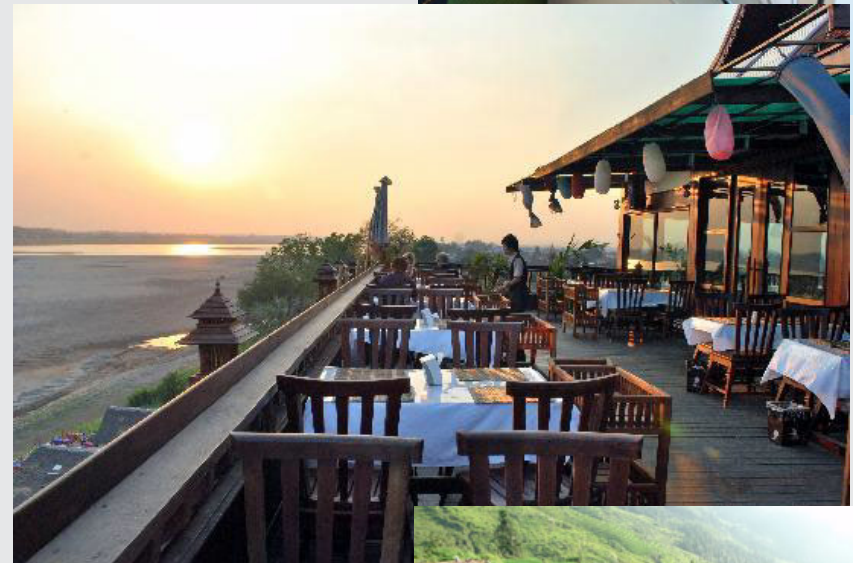
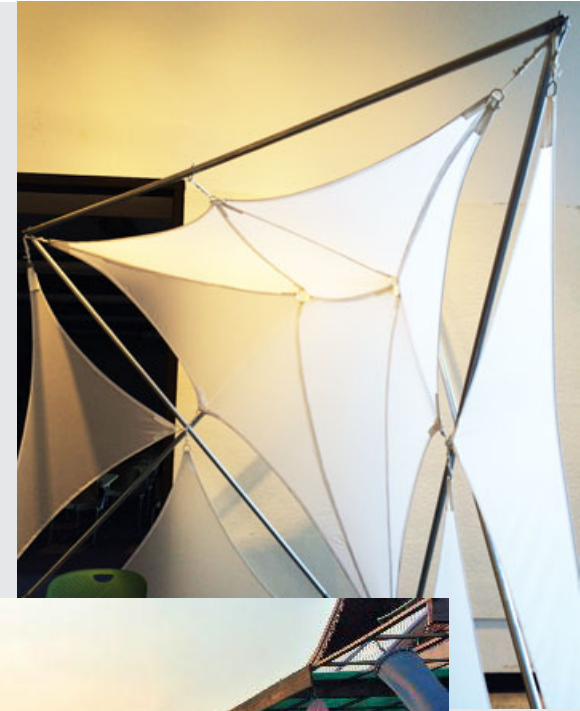


# South Downtown: Design Goals

Jeff Toreson  
Stage 1: S-downtown Design

## *What Milwaukie needs:*

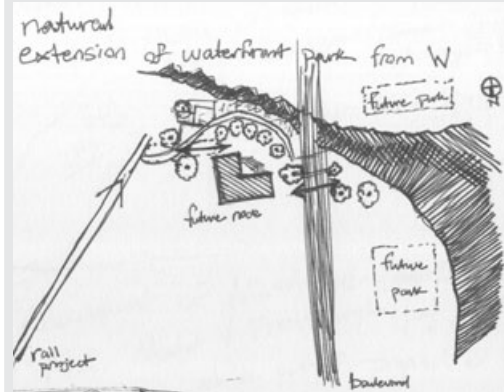
- Localized downtown grocery center
- Cohesive shopping destination, market space
- Restaurants serving local, fresh food
- Connections to riverfront park
- Buildings with river views
- Improved pedestrian & bike network
- Celebration of Milwaukie's unique culture



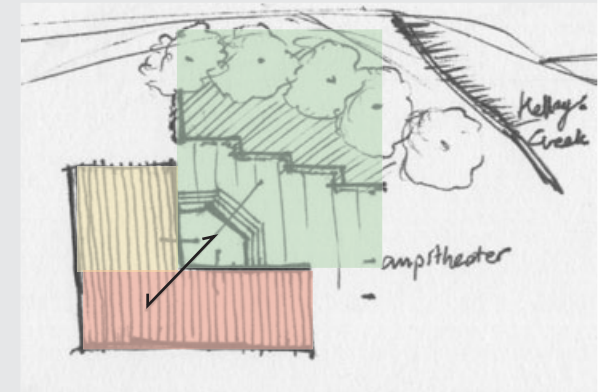
# Milwaukie's Green Threshold

(South Downtown Re-Development)

- Enhance **GREEN THRESHOLD**
- **SLOW DOWN** traffic on Mclaughlin
- Create a new **SHOPPING DISTRICT**
- Improve **BIKE NETWORK**
- Provide outdoor **PUBLIC SPACE**

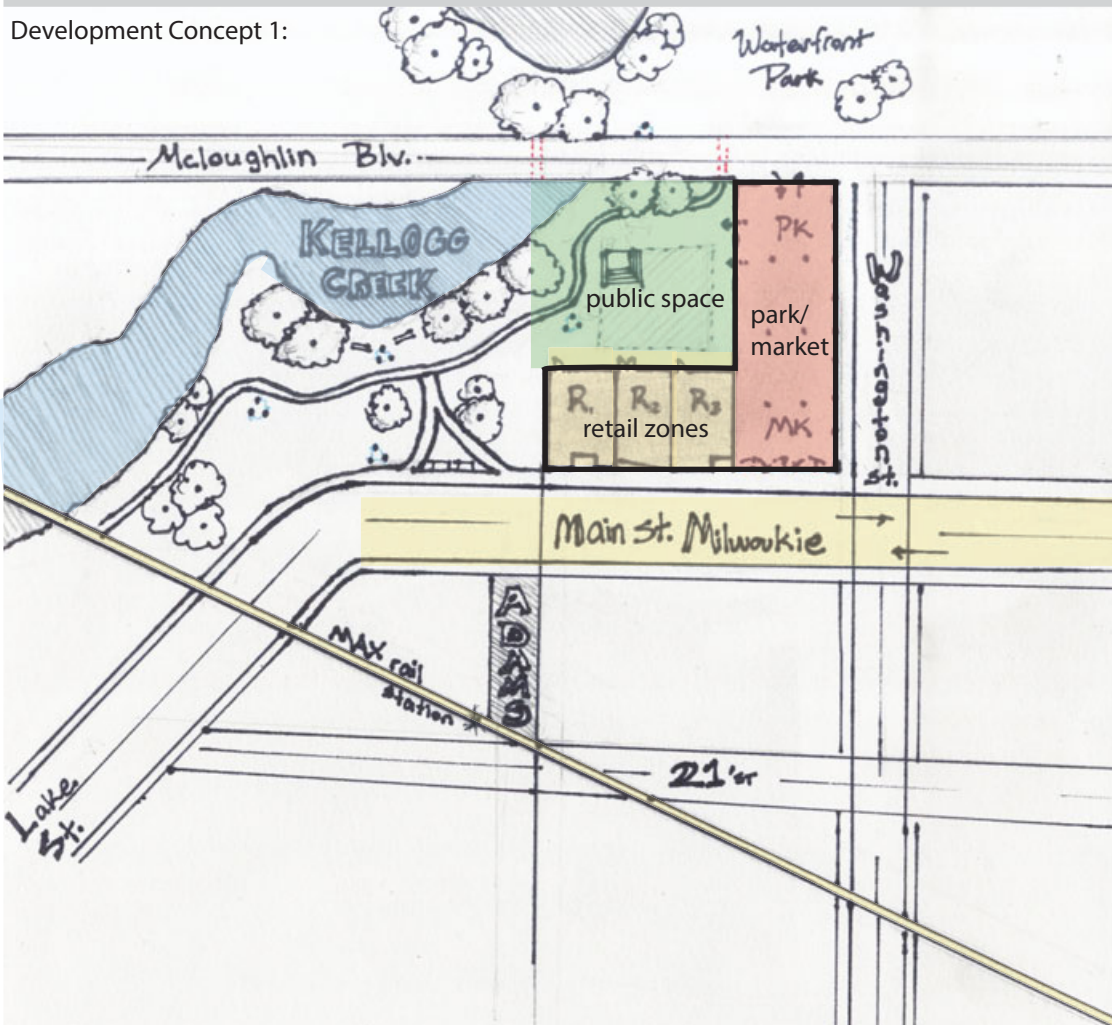


Future Node

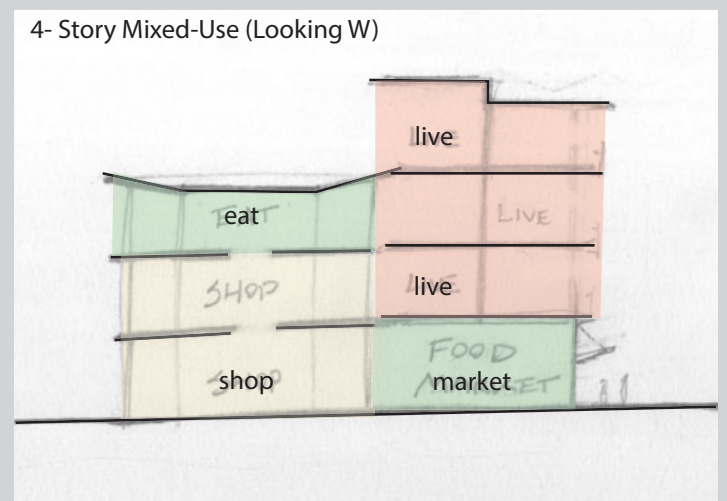


Connect to Kellogg Green Zone

Development Concept 1:



4- Story Mixed-Use (Looking W)



3- Story (Looking S)

