

Milwaukie, Oregon -Site Design- **Cash Lot**



- Make a landmark on the corner of the Cash Site by McLoughlin Blvd.
- Keep with the grid of the city
- Put a market on the corner of Maine and SE Washington St. to define the corner
- Use a more organic form on the SW side of the Cash Site
- Make a barrier to the highway noise
- Develop a path along with water
- Define the end of Adams Street with landmark that acts as a central node to the south downtown area
- Incorporate housing units with green corridors
- Use water features to buffer sound (with potential for water catchment systems)
- Put retail and boutique eateries along Adams Street, so they are available for residents and the people traveling on the light rail

Milwaukie, Oregon -Site Design- Cash Lot Scheme 1 Plan

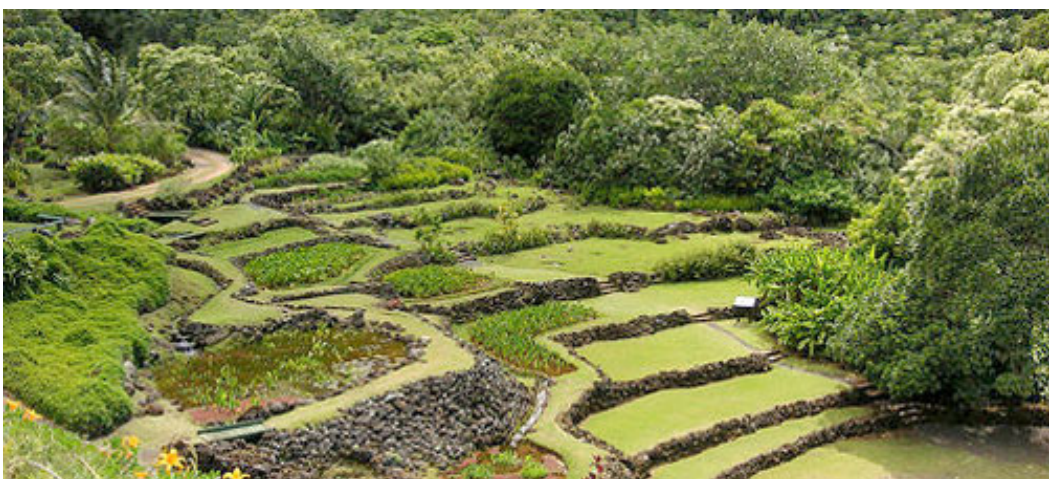
Focus on Green Spaces

- Finding a sense of community through public gardens
- Permeable Pavement used to define space
- Housing along 21st St.



Note: Arrows indicate entry ways

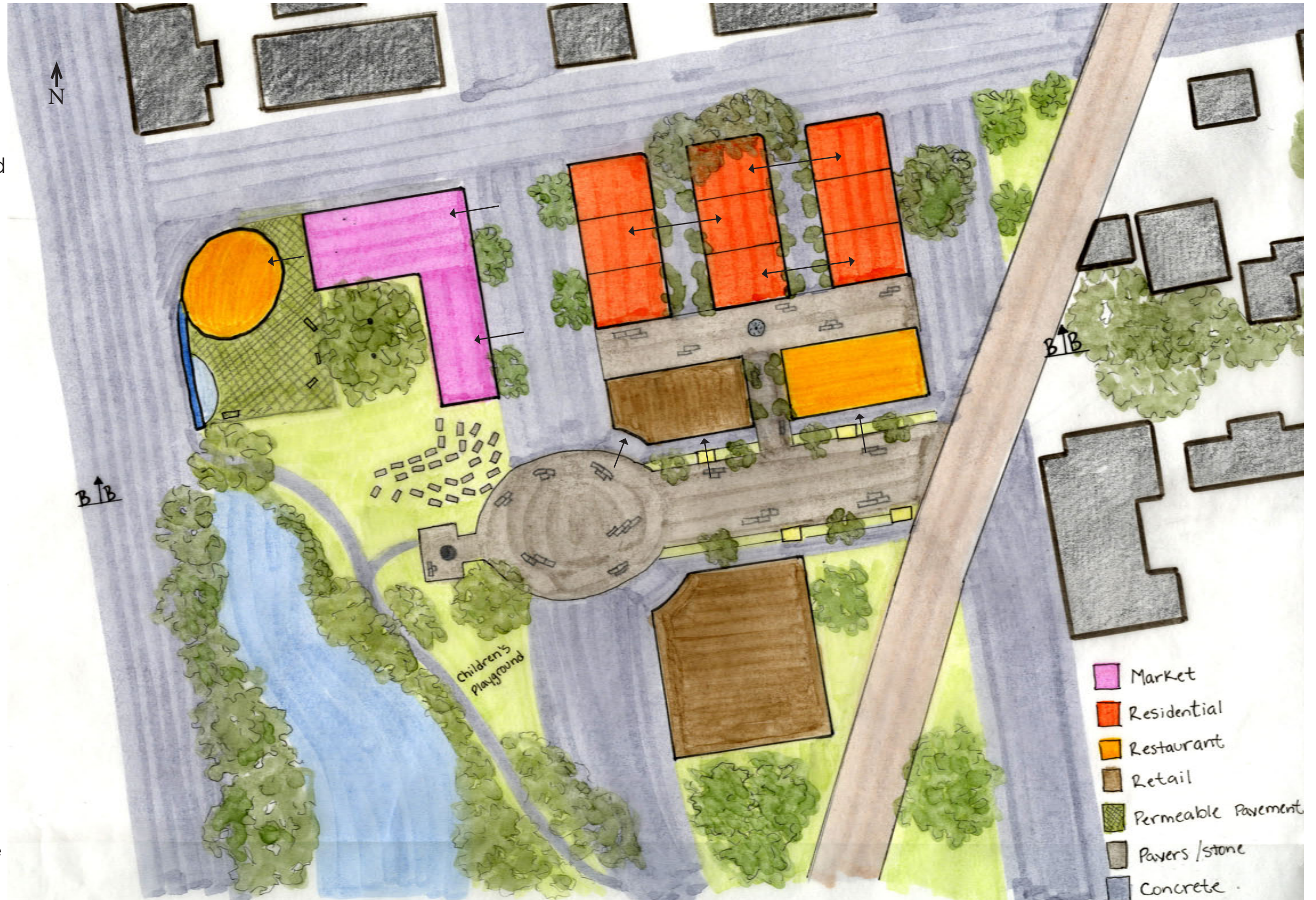
Milwaukie, Oregon -Site Design- Cash Lot Scheme 1 Precedents



Milwaukie, Oregon -Site Design- Cash Lot Scheme 2 Plan

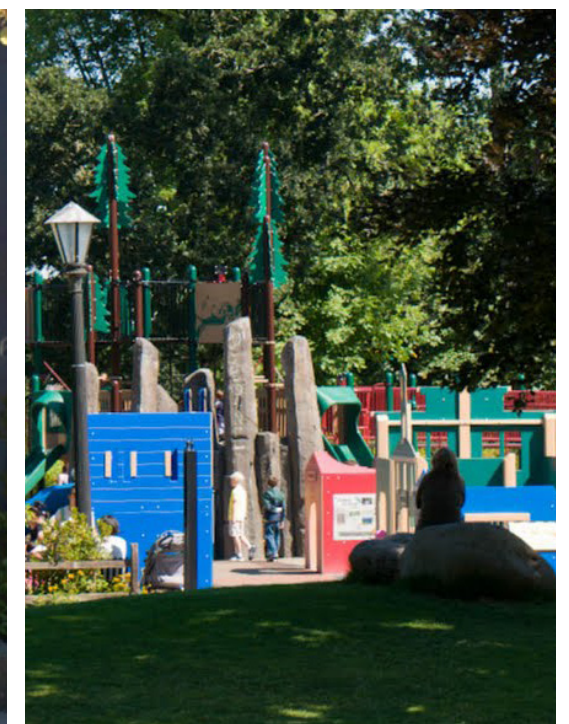
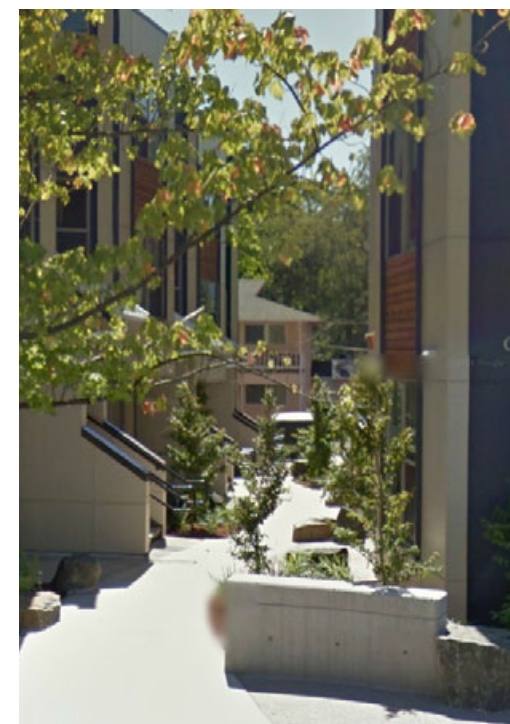
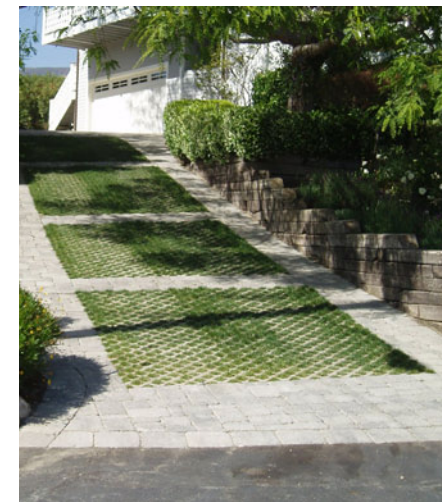
Formal node down Adams Street

- Finding a sense of community through children's spaces and an outdoor amphitheater
- Solid/void connections made with the use of circular forms
- Housing along SE Washington St.



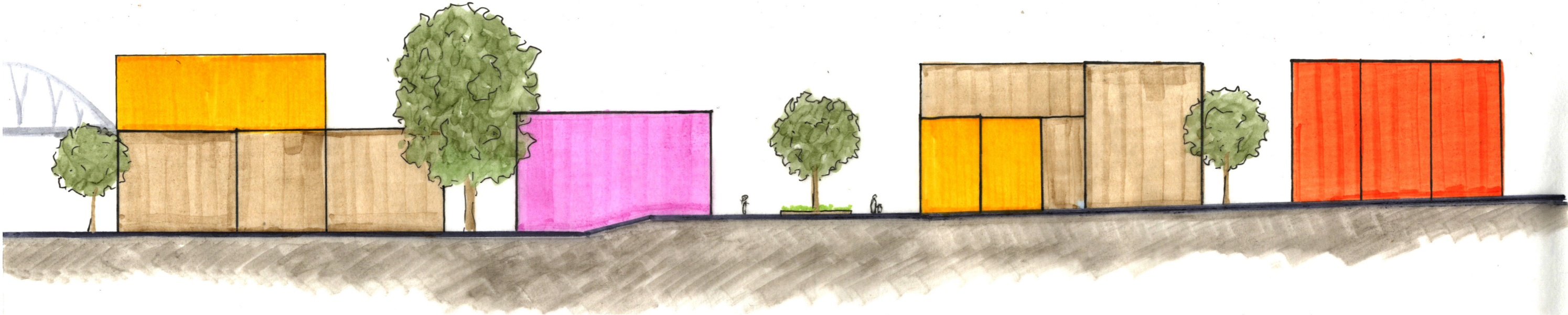
Note: Arrows indicate entry ways

Milwaukie, Oregon -Site Design- Cash Lot Scheme 2 Precedents



Milwaukie, Oregon -Site Design- Cash Lot Scheme 1&2 Sections

Section A-A



Section B-B

