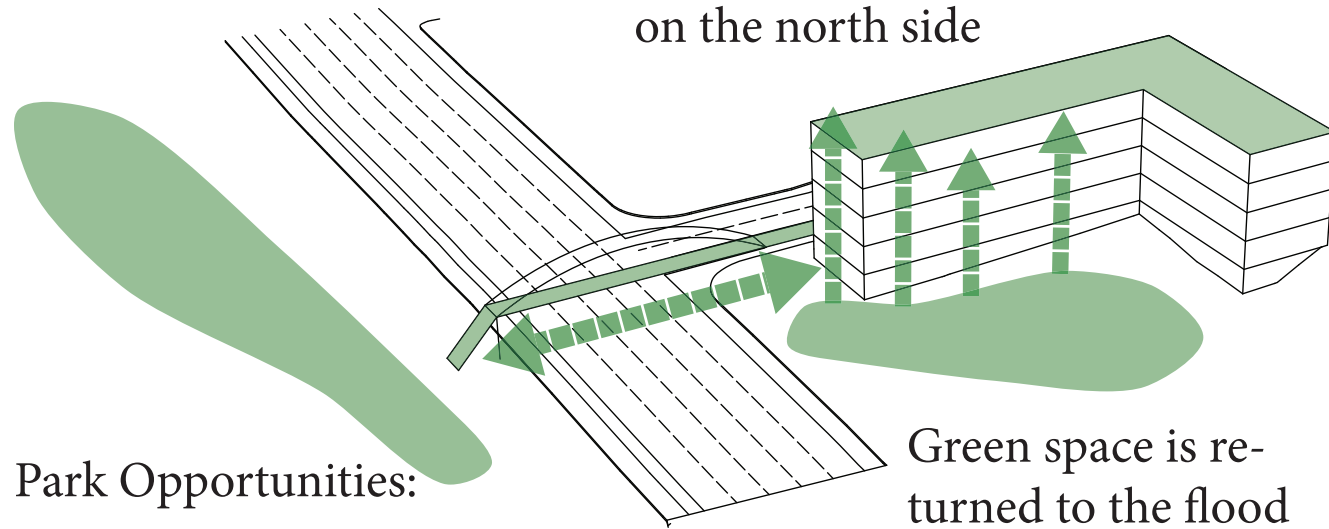


# CONCEPTS DESIGN

Connections and identity can be made through the addition of a multi-modal bridge for bicyclists and pedestrians. The bridge could act as a literal interpretation for bringing green space into the city.

The building assumes a more urban form that addresses the city on the north side



Park Opportunities:

Dog Park, Running/Bicycle Paths, Open Space, Children's Playground, Pier

Green space is returned to the flood plain area and translated up the building

# IDENTITY



<http://10mosttoday.com>



<http://i.huffpost.com>



<http://mastercraftdesignbuild.com>



<http://10mosttoday.com>

Hayden, Mike, Matt



# SCHEME 1:

## 1 Integrated Building



> Parking, Retail, and Residential, complete with a Visitor Center all integrated into one building.

# SCHEME 2:

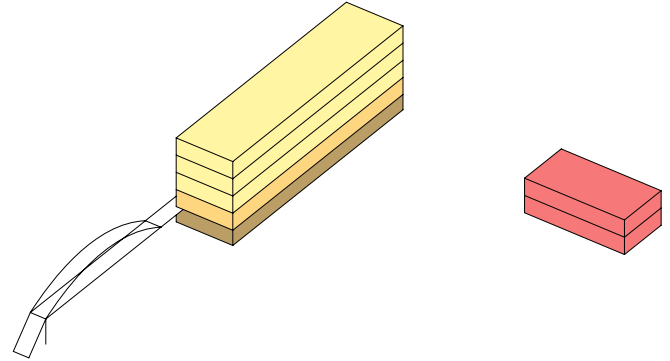
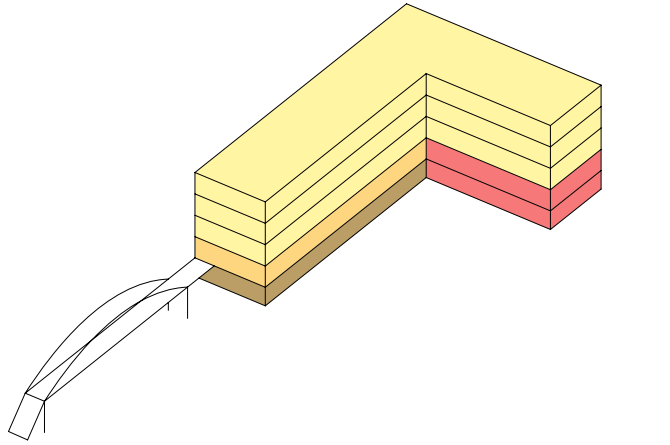
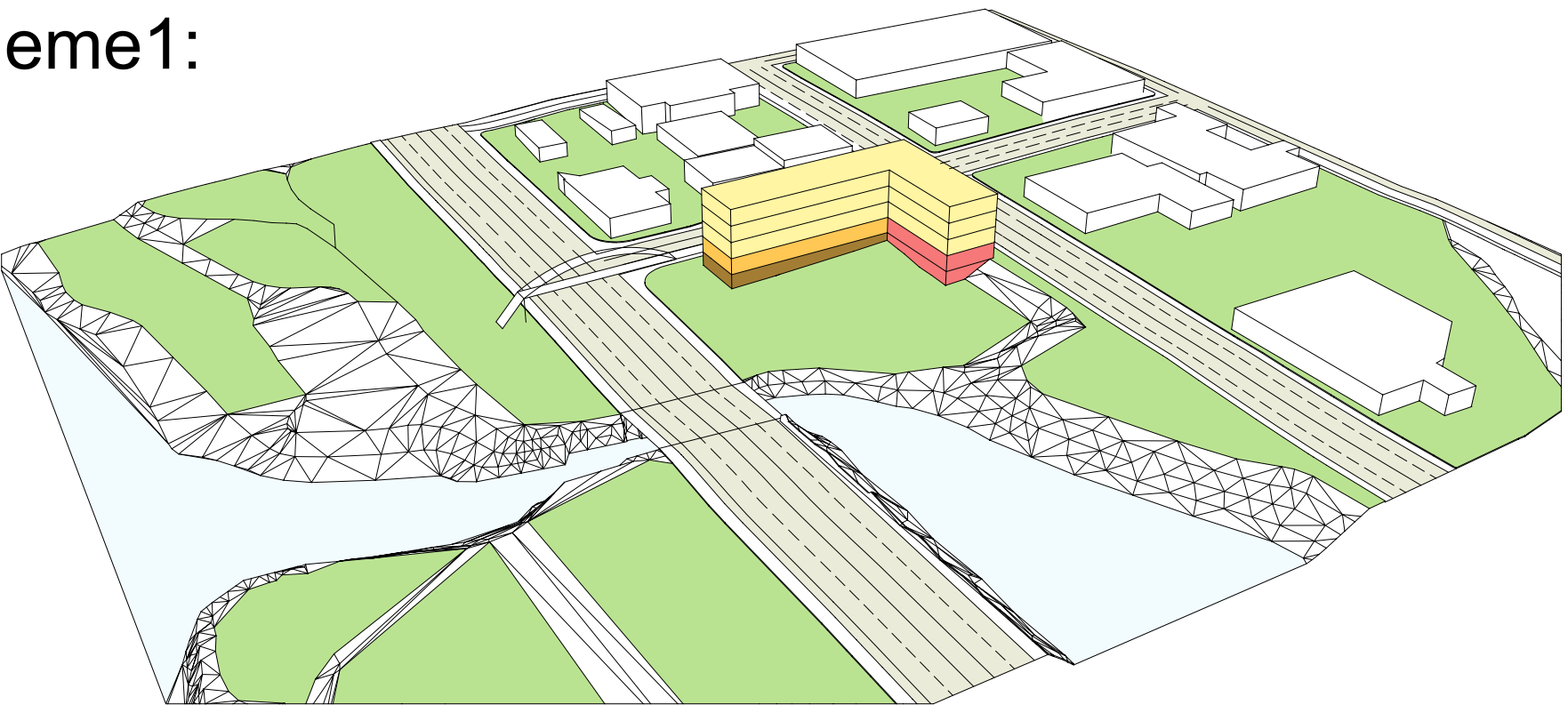
## 2 Separate Buildings



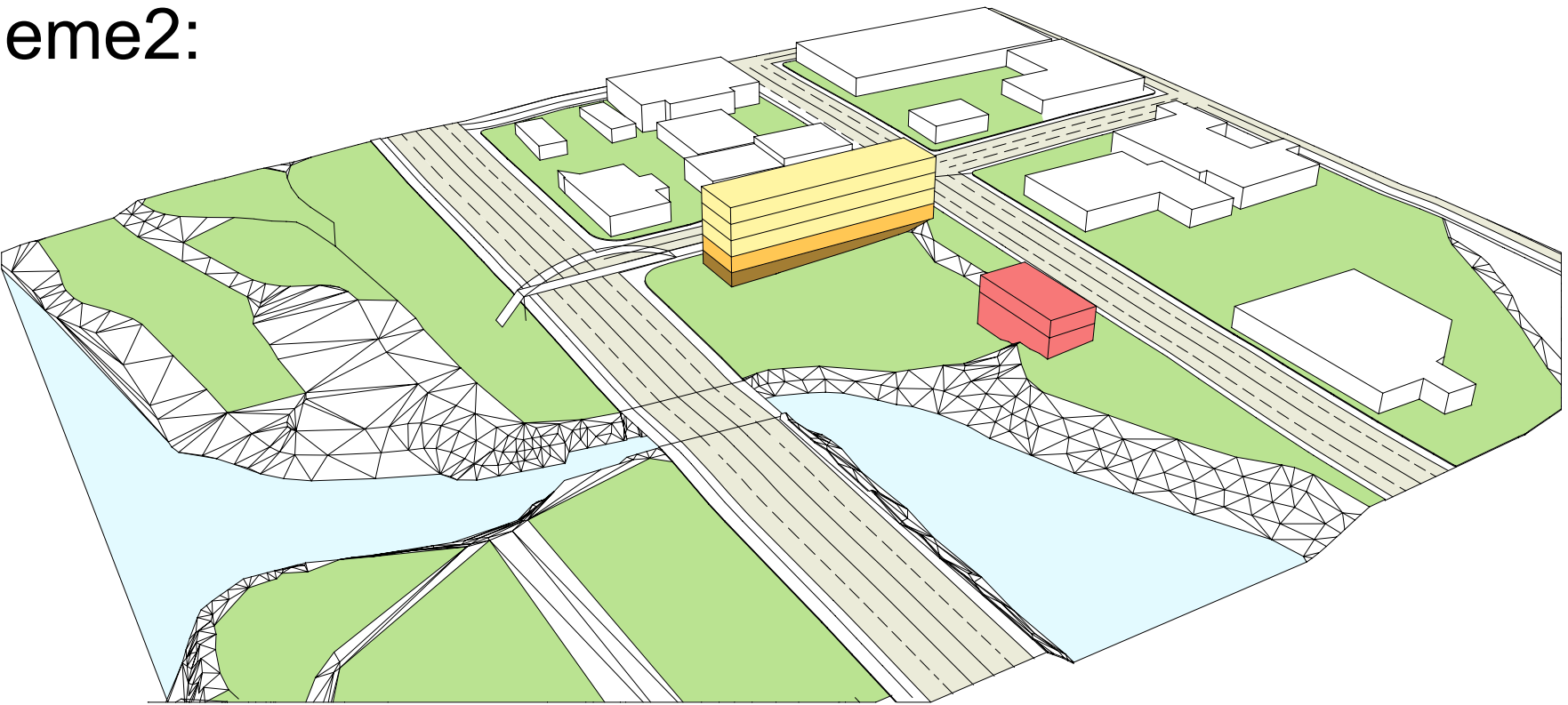
- > Parking, Retail, and Residential located in Northern Building
- > Separate Visitor Center to South at end of Adams St. Connector





# Cash Spot design :

Scheme1:



Scheme2:



-  Parking
-  Retail/Lobby
-  Residential
-  Visitor Center