

SCENE PRESERVED



trees: in the west, give shadow in summer and supply sunshine in winter.



path: keep connect and road system

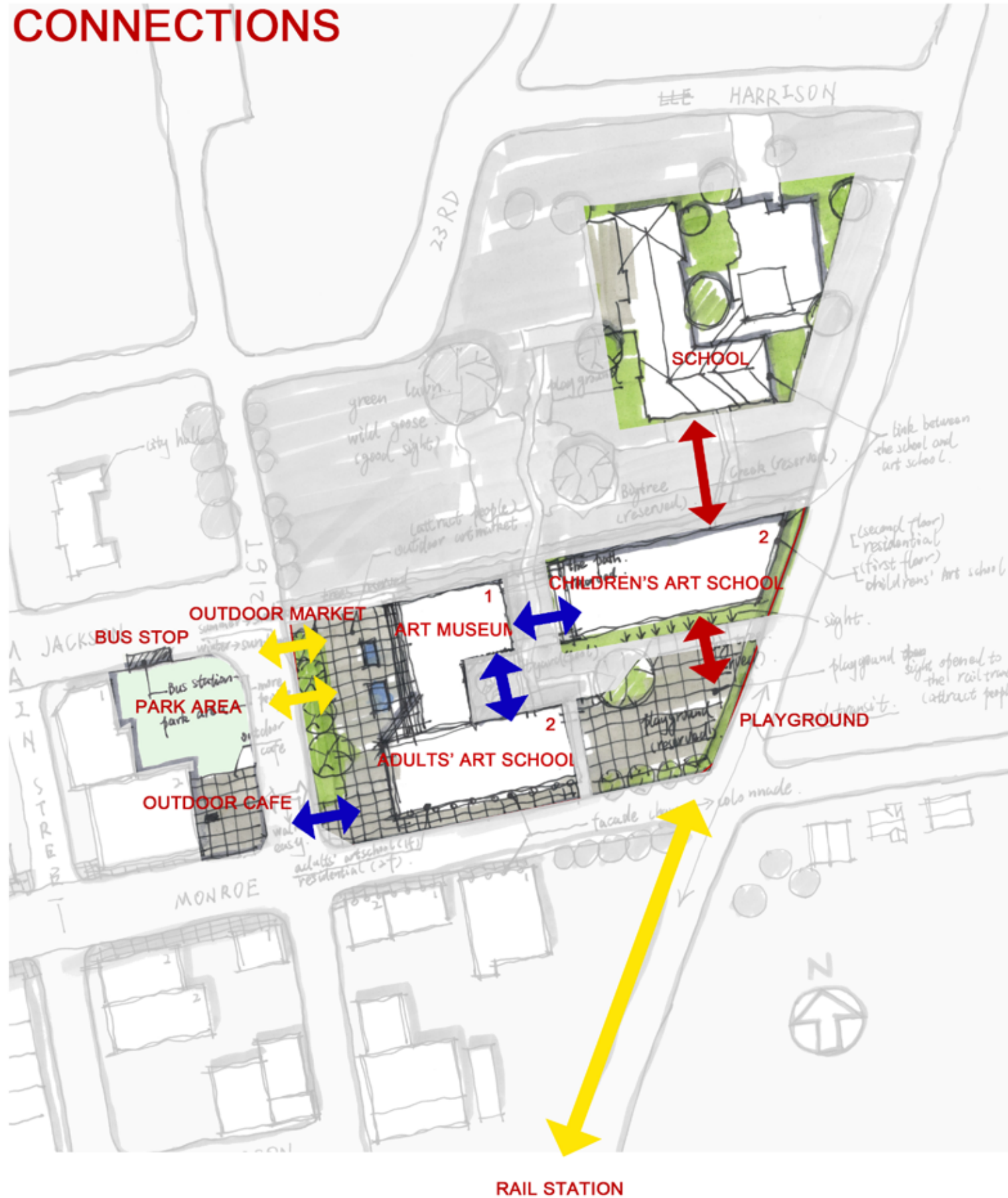


big tree: original ecology and provide shadow

creek: original ecology in the site



playground: accordant to the children's art school



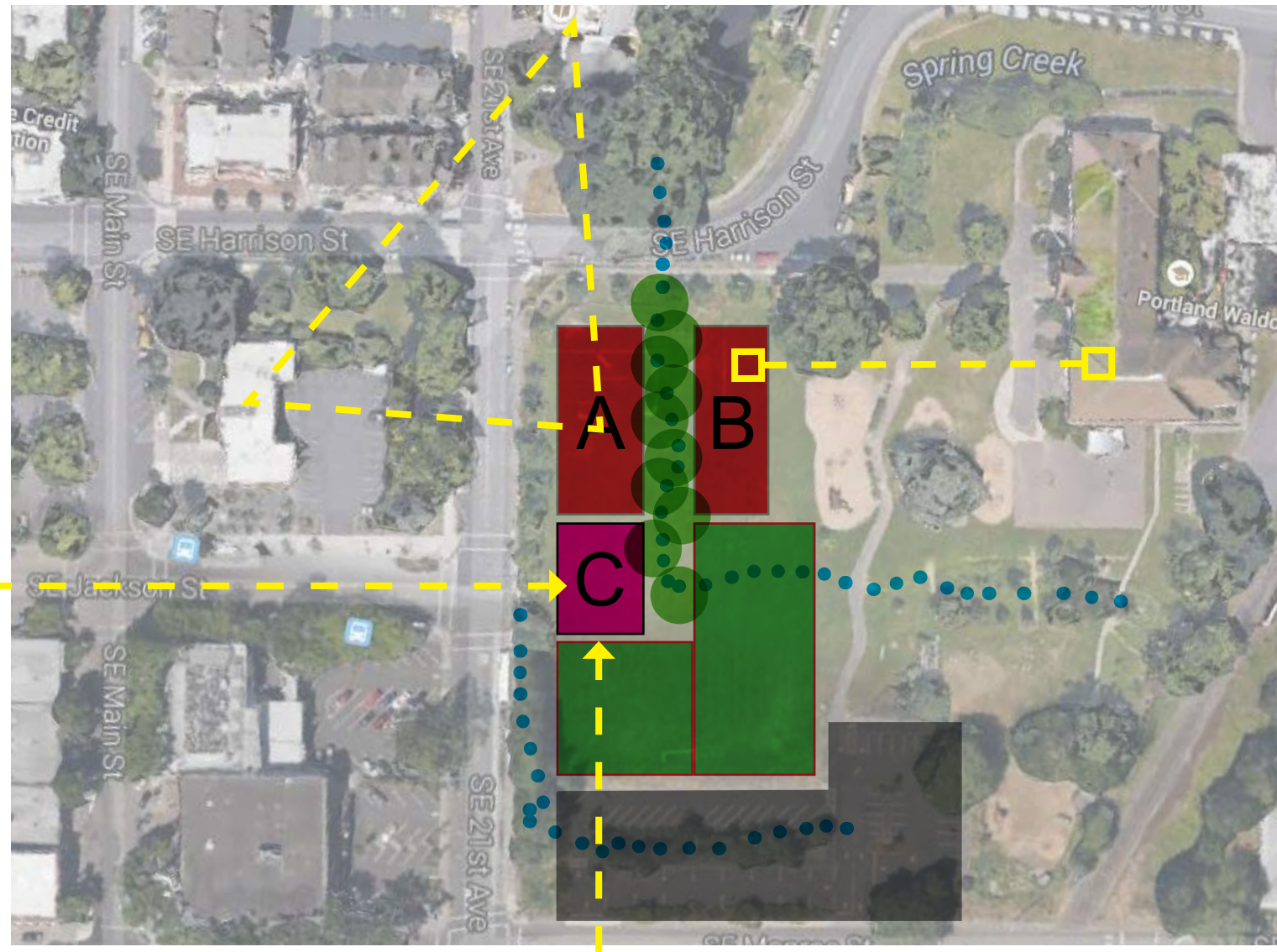
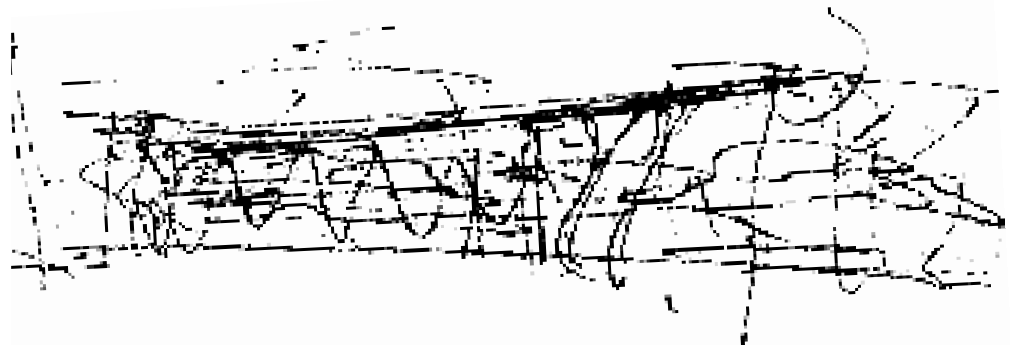
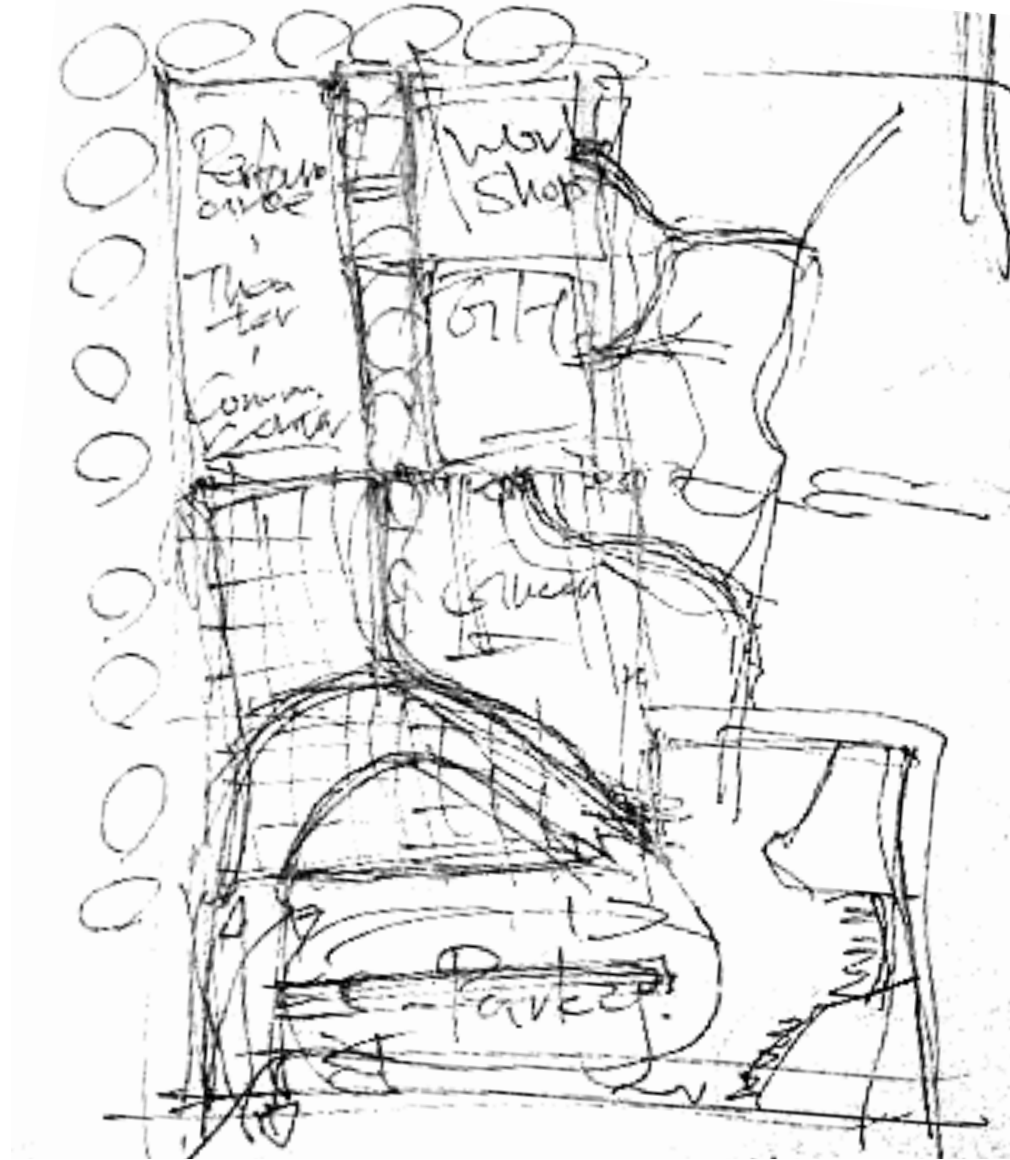
CHILDREN CONNECTION

FUNCTION CONNECTION

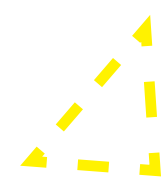
TRAFFIC CONNECTION

Layout Conception Design of Waldorf School Site

“The process by which this knowledge is learned, through the creativity of the teachers who become the “authors” of each subject, must meet the inner need in the child for true authority and provide a secure basis for the child to reach out in the world.” - The Waldorf School



- Water Way
- Green Trail
- Building Footprint
- Green Field
- Plaza
- Existing Parking



Civic Triangle

City Hall, Library, and the Building A, these three buildings forms an important nod of civic triangle. The program within the Building A are Performance Hall, Gallery, and Community Center. Providing a place to extend the public service for the community.



Education Hub

Botanic Garden, Creative Workshop, building B serves for Waldorf school as an education extension, where shared with public, the students can participate as part of the creative community.



Attraction

Locate in the end of Jackson Street, Site C is an important landmark to attract visitors from Willamette water front. Not only attracting visitors from the west, the plaza also attracts people who travel by light rail on the South. As part of the civic triangle, the plaza also serve the community for event and gathering.

“The human being is a threefold being of spirit, soul, and body whose capacities unfold in three developmental stages on the path to adulthood: early childhood, middle childhood, and adolescence.” - Rudolf Steiner



The Green Roof

Bring the nature closer to people, the design of the green roof allows people to move from ground to the very top of the roof top, creating a philosophical experience through the path. The view of the city, the mountain, and the river can be seen through out the journey.

The Botanic Garden

Hands on experience with the plants, those that came from far away, or those that we seen everyday. The world is within the reach of simply open your hands and touch it. The garden provides opportunity for people from every age to learn the beauty of what nature can provide.



The Performance Hall and Art Gallery

It is culture we bind us together, no matter where we came from. Arts, Performance, Music, as a city of creativity, the Performance Hall provides a stage for creative community to showcase their creativity. The space supports both the public use and for the School of Waldorf for display and performing arts.

The Workshop

Incubator for many creative works, the workshop supports local artist to start their creative work in the early stage, the space also support the students from Waldorf school for teaching and learning how to use the tools to make the imagination come true.

