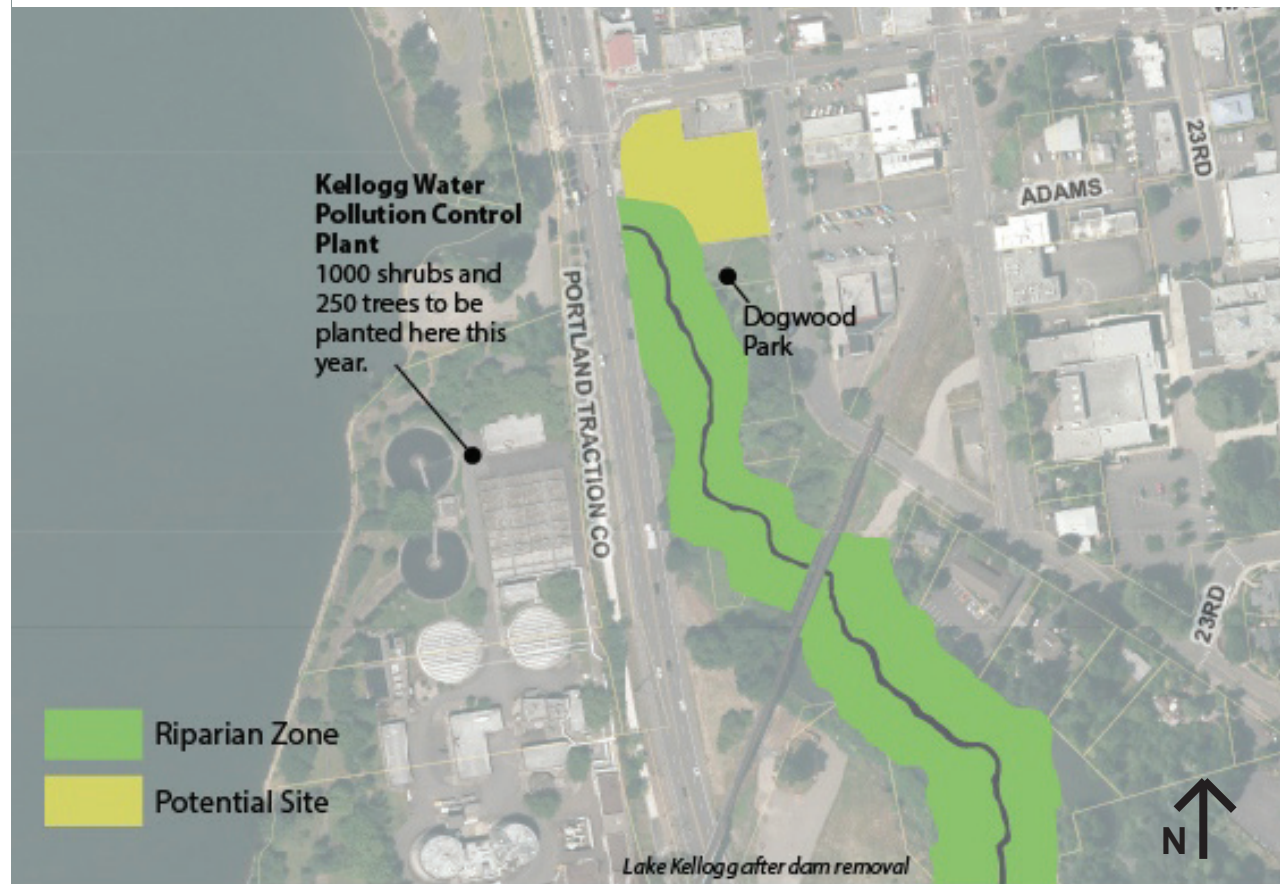


NATURAL ENVIRONMENT: Plants

Riparian Zone: Interface between land & water
 - Kellogg for Coho Initiative (will restore 14 acres of native wetlands)

Factors to Consider:

- If building on “Cash Spot” Site is to occur, it must not infringe upon Kellogg Creek’s riparian area (best to maintain a buffer of native trees and shrubs from water’s edge to built environment).
- Best to replant native riparian plants in any areas disturbed by construction. By doing so, the “Cash Spot” Site can become more integrated with nature and a larger buffer between the building and Kellogg creek will be created.



Native Riparian Zone Vegetation



Red Alder



Nootka Rose



Small-fruited Bulrush



Large-Leaf Lupin



Douglas Spirea



Red Osier Dogwood



Flowering Red Currant



Pacific Willow



Slough Sedge