



Science & Industry Community Plan Sustainable Leadership Practicum III



OLIS 613
CRN 34560
Spring 2015
 Tuesday/Thursday 10:00-
 11:20AM
119 Fenton Hall
Ric Stephens, Instructor
ric@uoregon.edu
 (503) 501-7397

Course Materials

- Portland Comprehensive Plan
- Portland Zoning Code
- LEED for Neighborhood Development

Course Description

The Oregon Leadership in Sustainability practicum will focus on sustainable development of the OMSI District site in Portland, Oregon. Students will develop alternative proposals based on opportunities and constraints that exemplify the best in regenerative design. The course will be led by University of Oregon instructor Ric Stephens and OLIS Director Jake Pollack. Local and international experts will serve as specialty mentors to the students in the fields of law, real estate market analysis, architecture, landscape and other topics. Students will present their projects at a public event at the end of the course.

Class Format

Class sessions will involve the presentation of material by the instructors; class discussion; guest speakers; mentors; a design charrette; a design studio and Skype videoconferencing with local and

international experts. Students should be prepared to participate actively in classroom discussions. This course includes 4 off-site activities:

1. Site reconnaissance visit with city officials and local stakeholders
2. Design charrette open to environmental design professionals
3. Design studio with selected topic experts (optional)
4. Presentation to city officials, industry experts and general public

[See attached schedule for tentative dates]

Learning objectives include:

- Sustainable development, urban resiliency and regeneration concepts
- Site analyses
- Multimedia and presentation
- Urban planning and design
- Environmental design
- Collaborative design

Reading materials, lecture notes, online materials and/or PowerPoint handouts will be provided on Blackboard.



City Comforts, the blog
<http://citycomfortsblog.typepad.com/cities/>

LEED for Neighborhood Development
<http://www.usgbc.org/DisplayPage.aspx?CMSPageID=148>

Metro Community Investment Toolkit
<http://www.oregonmetro.gov/index.cfm/go/by.web/id=28446>

Metro Downtowns and Main Streets
<http://www.oregonmetro.gov/index.cfm/go/by.web/id=6555>

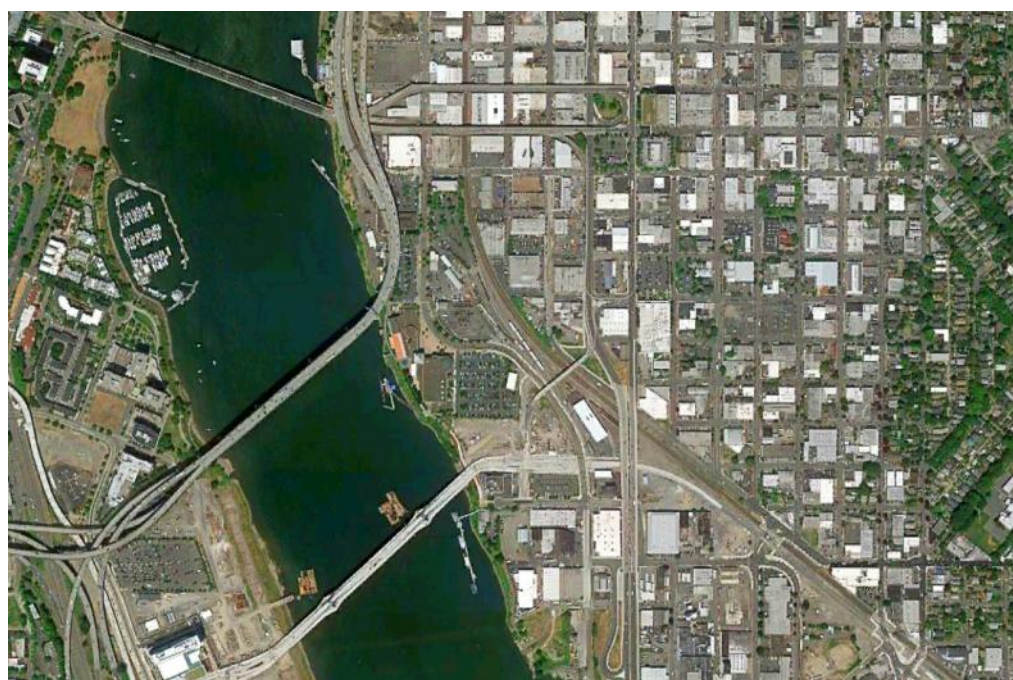
Metro Transit Oriented Development
<http://www.oregonmetro.gov/index.cfm/go/by.web/id=140>

Portland Sustainability Institute EcoDistricts
<http://www.pdxinstitute.org/index.php/ecodistricts>

Project for Public Spaces
<http://www.pps.org/>

Transit Oriented Development
www.transitorienteddevelopment.org/

Walk Score
<http://www.walkscore.com/>



Students are expected to have read the materials for each week and to come to class prepared to discuss their content and implications.

Required Reading

- 📖 Portland Comprehensive Plan and Zoning Code [sections]
- 📖 Metro Community Investment Toolkit [sections]
- 📖 Other materials as assigned and distributed on Blackboard.

Course Grades

The course grade will be based on the following components:

- Completion of class assignments
75%
- Participation in class activities
25%

Assignments

The final report is designed to help students develop an in-depth understanding of sustainable community planning issues and apply the concepts studied in class. Students will develop three scenarios and research specific topics related to sustainable development, urban resiliency and revitalization.

Class deliverables includes the following:

- Project website
- Design charrette exhibits
- Design studio exhibits
- Development plan report
- PowerPoint and/or Prezi
- Video
- Public presentation
- Others to be determined

Sustainable Leadership Practicum III Schedule

DATE	ACTIVITY / TOPIC	LOCATION	NOTES	MATERIALS / PRODUCTS
Mar 31 Tu	Introduction	UO, Eugene		Blackboard / Website
April 2 Th	Site Analysis	UO, Eugene		
April 12	Site Visit	Portland	Unmanned Aerial Vehicle photo/video	Photography / Videography
April 7 Tu	Comp Plan / Zoning	UO, Eugene		
April 9 Th	Concept Planning	UO, Eugene		Concepts
April 14 Tu	Scenario Planning	UO, Eugene		Scenarios
April 16 Th	Community Planning	UO, Eugene		
April TBD	Design Charrette	UO, Portland	Events Room, White Stag Building	Site Plans, Graphics
April 21 Tu	Tourism Planning	UO, Eugene		Concept Plan & Alternates
April 23 Th	Urban Design	UO, Eugene		
April 28 Tu	Architecture	UO, Eugene		
April 30 Th	Landscape Architecture	UO, Eugene		
May 5 Tu	Public Art	UO, Eugene		
May 7 Th	International Design	UO, Eugene	International Participants (Skype)	
May TBD	Design Studio	TBD		Graphics
May 12 Tu	Transport & Streetscape	UO, Eugene		
May 14 Th	Utilities	UO, Eugene		
May 19 Tu	Finance, RE, Law	UO, Eugene		
May 21 Th	Pro Forma	UO, Eugene		Pro Forma
May 26 Tu	Construction	UO, Eugene		
May 28 Th	Concept Refinement	UO, Eugene		
June 2 Tu	Class Presentations	UO, Eugene	Individual assignments	Exhibits
June 4 Th	Presentation Review	UO, Eugene	Presentation format & rehearsal [open ?]	Draft Report
June TBD	Public Presentation	ZGF, Portland	Evening	PowerPoint or Prezi
July TBD	Final Report	UO, Eugene	Oregon Planners Journal article	Printed Report & Hypertext PDF



Schedule

The tentative schedule is attached to this syllabus. The schedule may be revised to accommodate 🌐 guest speakers and Skype videoconferencing. Additional readings may be assigned throughout the term using the class e-mail list, and announcements will also be sent through the Blackboard e-mail system.

Academic Policies

Professional Practice

Students should treat each other and the instructor with the professional courtesies and respect expected in a workplace.

All communications relating to this course and all work turned in for this course should reflect professional standards in tone, presentation, formatting and spelling.

The classroom is a place of focuses learning. This requires that students arrive on time, stay until the end of the class period, do not disrupt the class by leaving the room temporarily, and refrain from non-learning activities. Students who fail to adhere to these guidelines will be asked to leave for the remainder of the class session.

Documented Disabilities

Students who have a documented disability and anticipate needing accommodations in this course should make arrangements to see the instructor as soon as possible. They should also request that the Counselor for Students with Disabilities send a letter verifying the disability.

Late Assignments

If you are unable to make it to class on the day an assignment is due, you may email your assignment to me prior to the class time and date that assignment is due. Late assignments receive only partial credit.

Missed Class Policy

If you miss a class, please arrange to get class notes from a classmate. Lecture notes and/or PowerPoint handouts will be posted to the Blackboard.

Incomplete

Students are strongly discouraged from requesting an incomplete. In accordance with University regulations, an incomplete will only be given when “the quality of work is satisfactory but a minor yet essential requirement of the course has not been completed for reasons acceptable to the instructor.” In addition, students should consult the university policies regarding academic practices (<http://libweb.uoregon.edu/guides/plagiarism/students/>).

Academic Misconduct

You are expected at all times to do your own work. Copying content from other students and submitting it as your own work is grounds for failing the class. The University Student Conduct Code (available at conduct.uoregon.edu) defines academic misconduct.

Plagiarism

Students should properly acknowledge and document all sources of information (e.g. quotations, paraphrases, ideas) and use only the sources and resources authorized by the instructor. If there is any question about whether an act constitutes academic misconduct, it is the students’ obligation to clarify the question with the instructor before committing or attempting to commit the act. Additional information is available at: www.libweb.uoregon.edu/guides/plagiarism/students.

