

Map Design and Production

November 9, 2016 Draft
Advanced Cartography GEOG 493/593
Winter 2016 - CRN 26970/26985

Class: UH 9 - 9:50am, 260 Condon
Lab: U or H 10-11:50am, 442 MCK (SSIL)
Website: tba

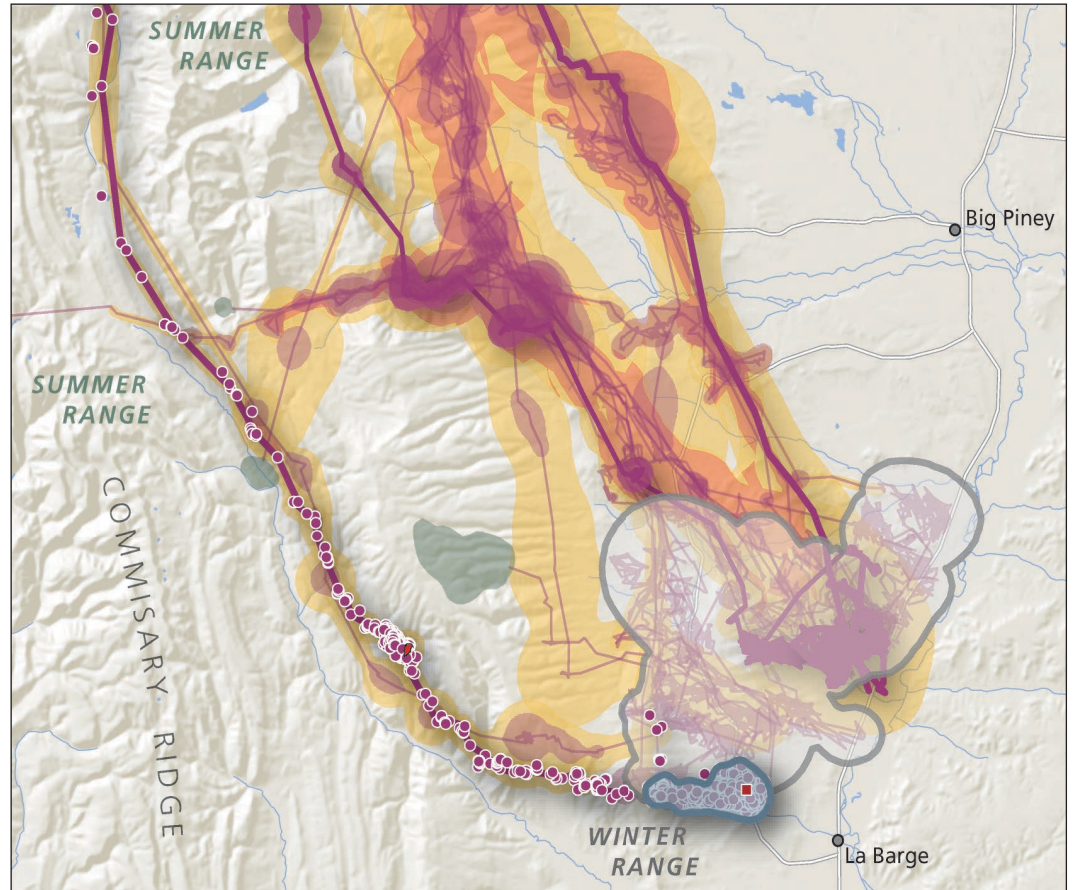
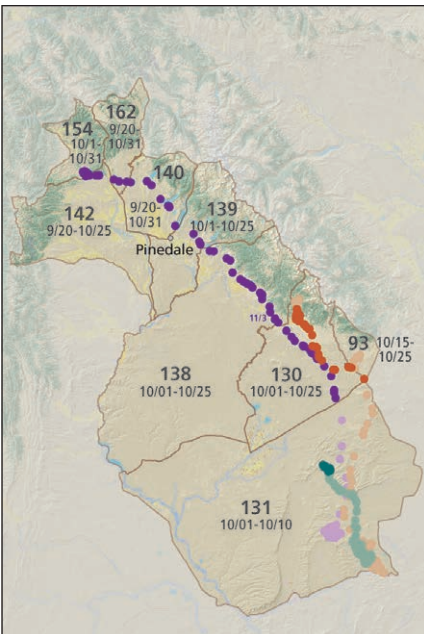
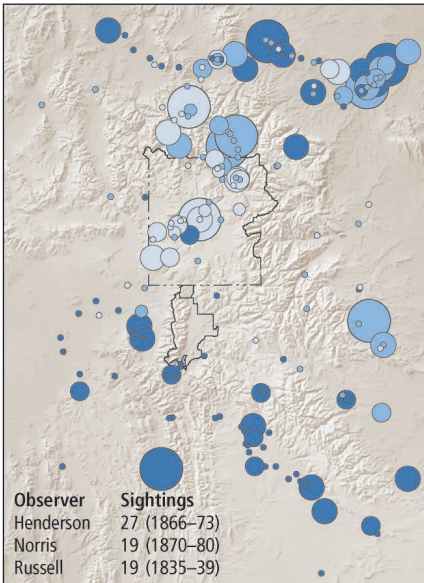
Instructor: James Meacham
Office: 163A Condon, 541 346-5788
Office Hrs: W 2 - 2:50, and by appt.
email: jmeacham@uoregon.edu

Lab Asst: tba
Office: tba
Office Hrs: tba
email: tba

Texts:
The Visual Display of Quantitative Information,
Second Edition, Edward Tufte, 2001.
Making Maps: A Visual Guide to Map Design
for GIS, John Krygier, 2011
The Non-Designer's Design Book,
Fourth Edition, Robin Williams, 2014.

Course Description: The purpose of this course is to present topics, materials, and tools relevant for solving map design and production problems. This course will build and expand on concepts introduced in GEOG 481 (GIScience I). The course includes lectures, guest and student presentations, map critique sessions, and topic discussions. The following topics will be covered: geographic data compilation, the map design process, graphic design principles, data graphics theory, production methods, color in map design, use of type, quantitative and qualitative maps, graphing, and cartographic design issues for print and other media presentation types. Atlases and other map products produced in the UO InfoGraphics Lab will serve as teaching tools and examples for learning a wide variety of mapping methods. Software tools used in the SSIL Lab include Adobe Illustrator and Photoshop, Esri ArcGIS, and Microsoft Excel.

The primary goal of the class is for students to gain the conceptual knowledge and practical skills necessary to produce professional quality map products. Lectures, exercises, a map review, and project discussions and drafts will provide the foundation in learning to complete the final project. The final project is to design and create a finished thematic cartographic product, that includes maps with supporting graphs and text. The final class project and presentation will count for 40% of the course grade and will be used to assess the knowledge and skill students have gained in the course. The prerequisite for the class is GEOG 481: GIScience I or Instructor's Consent.



Grading: Exercises 25%, Quizzes 20%, Map Review 15%, and Final Project and Presentation 40%. Graduate students will need to prepare an in-depth map critique paper and present their findings in class. Their final cartographic product needs to consist of a representation of substantial geographic data compilation, research, and application of advanced visualization methods.

No make-up quizzes. Do not miss class on the days quizzes are given. With adequate documentation of the medical or other issue that created an unavoidable absence, scores from another quiz may be substituted for a single missed quiz. The quiz questions will consist of essay and short-answer questions, will emphasize concepts, and will also include questions aimed at your ability to synthesize material presented in the lectures, readings, and related web pages. Late exercises will have one point deducted.