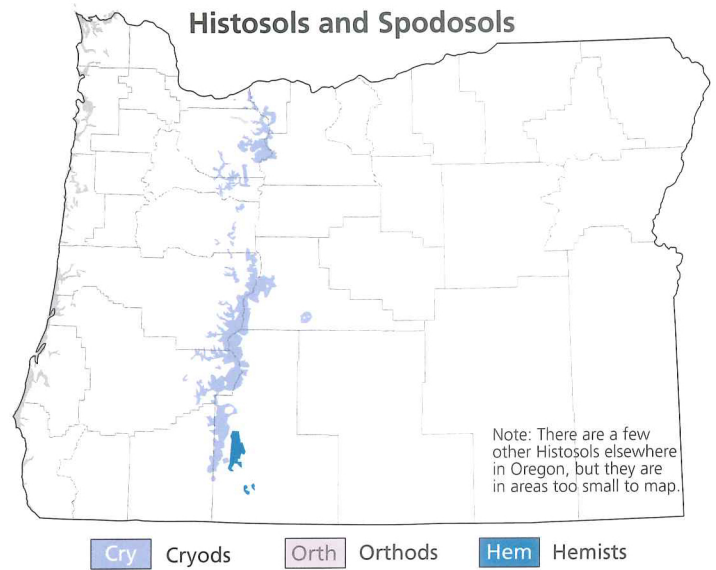


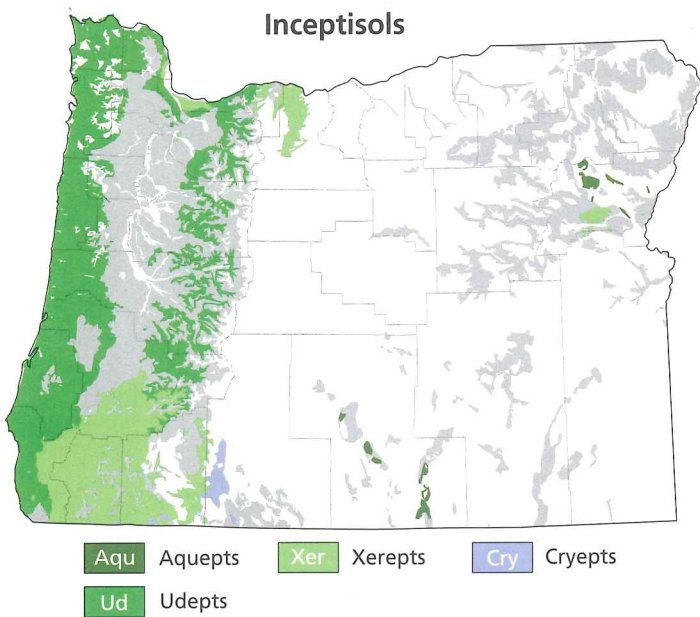
Soil Suborder Prefixes

- Alb** Soils with a light-colored (albino), strongly leached horizon at or below the soil surface
- Aqu** Wet soils with water tables at or near the surface for long periods of time
- Arg** Soils that have a subsoil horizon of clay accumulation (argillic horizon)
- Camb** Soils with weakly developed subsoils (cambic horizons) that lack distinct accumulations of clay, carbonate, organic matter or iron
- Cry** Soils in very cold climates at high elevations
- Dur** Soils that have a duripan, or silica-cemented hardpan, in the subsoil
- Hem** Organic soils formed by accumulation of partially decomposed plant remains
- Hum** Soils characterized by an unusually high amount of organic matter, or humus
- Orth** Young soils lacking development on active, recently eroded hillslopes
- Psamm** Young soils lacking development in sandy parent materials
- Sal** Soils in arid regions that have accumulations of soluble salts at or near the surface
- Ud** Soils in areas where rain falls mainly throughout the growing season and is sufficient to support rain-fed agriculture
- Vitr** Soils dominated by volcanic glass (vitreous)
- Xer** Soils in Mediterranean climates where summers are warm and dry and winters are cool and wet

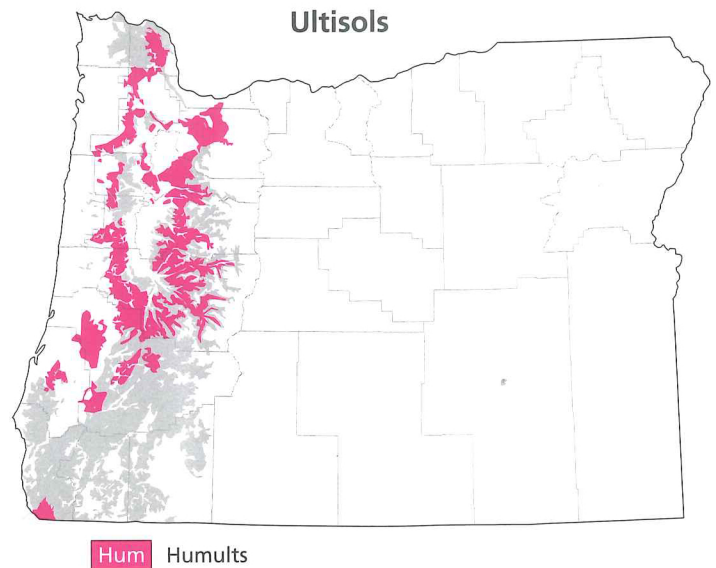
Histosols and Spodosols



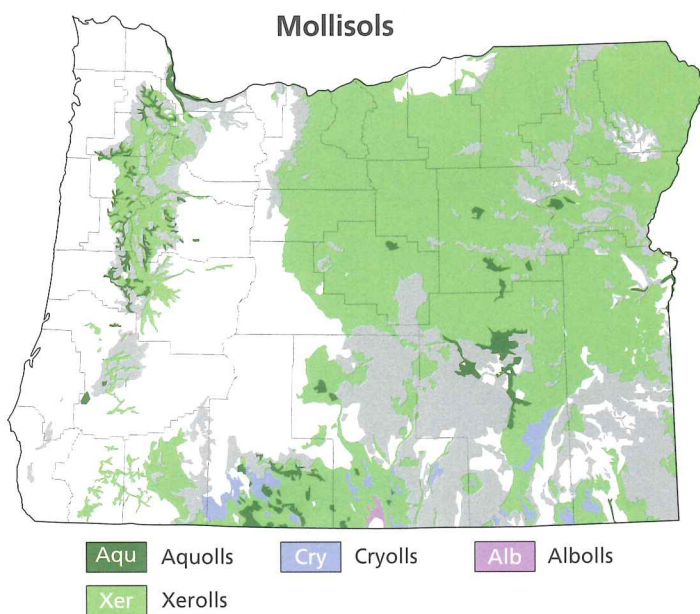
Inceptisols



Ultisols



Mollisols



Vertisols

