

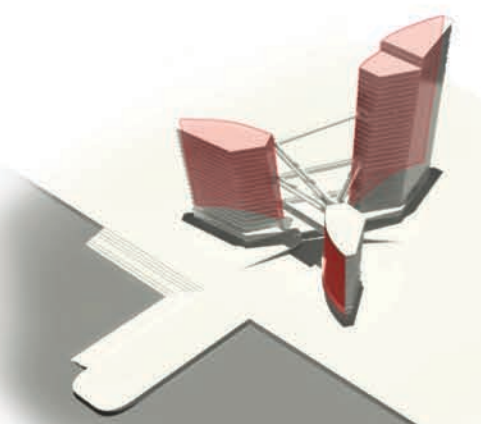
# ZIDELL LANDING

Brandon Yates | ARCH 484 | Nancy Cheng | Winter 2015

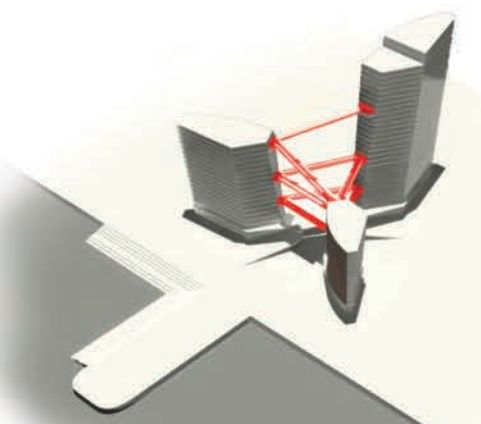
The South Waterfront in Portland, OR, was planned to be the next up and coming neighborhood in downtown. But it was all neighborhood and too far even though it was really close. The problem was that there wasn't enough attraction in the area. You always had to go somewhere else. To Revitalize the neighborhood and make it a destination I used the idea of Centers. This site is right on the south waterfront and is located right next to the new Tilikum Crossing Pedestrian Bridge. This allows for ease of access to and from the site. Additionally by engaging with the River, I create a park like waterfront park further down and by creating this buffer, I continue the flow along the edge that stops near Zidell Shippings old location.



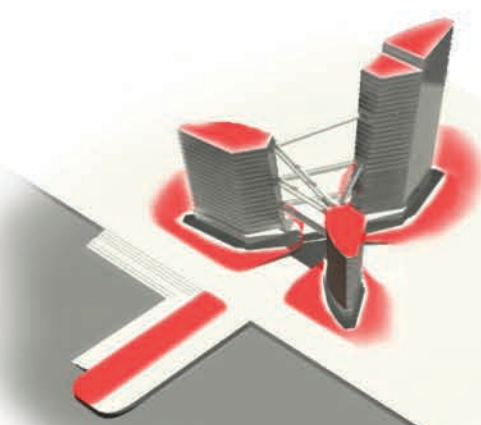
Community Gathering Spaces



Community Gathering Spaces

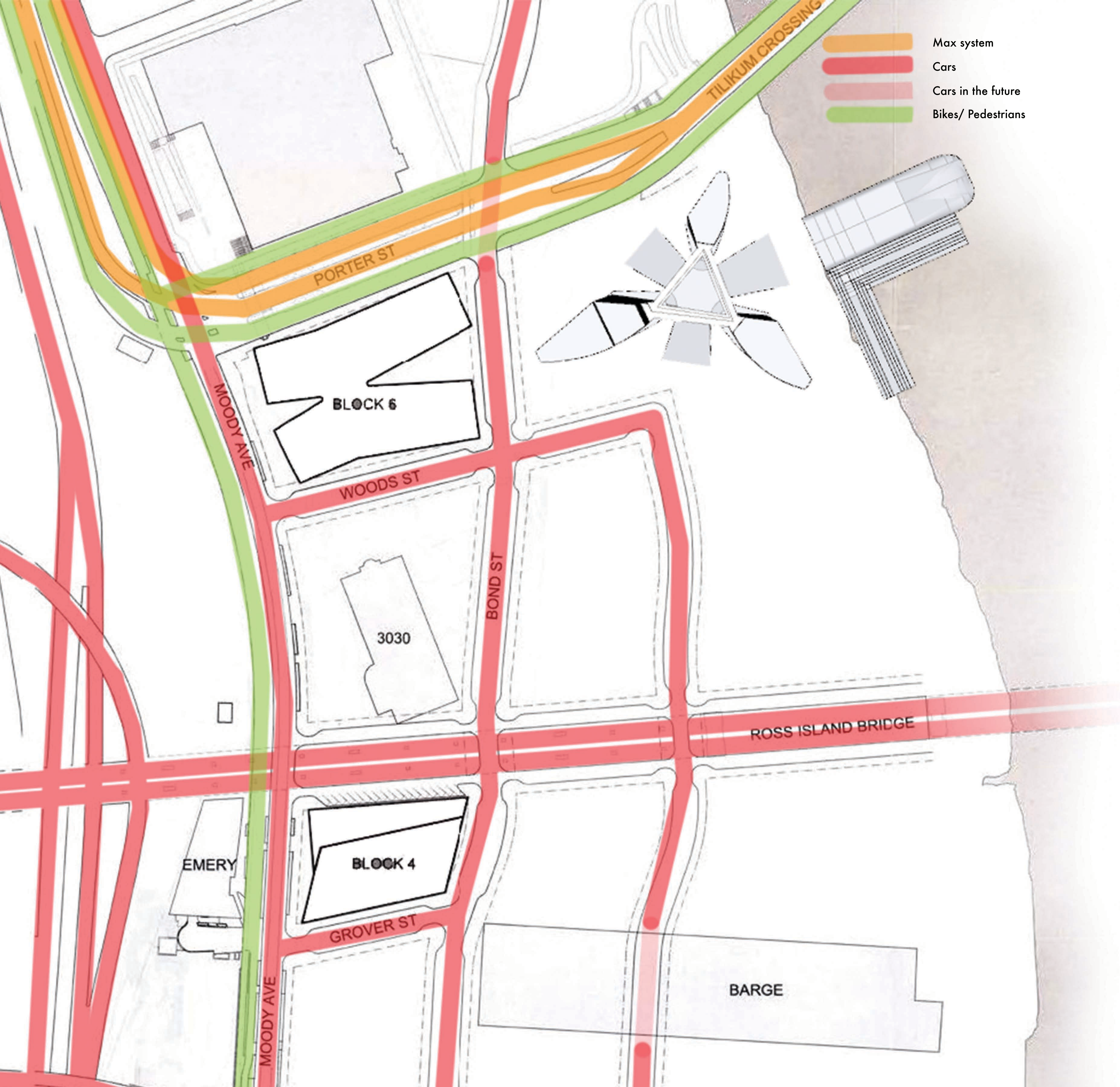


Building Connectivity



Green Space





The Buildings support the New waterfront park at the lower levels through shops stores, and other entertainment to bring life to the zidell yards portion of the southern waterfront. Steps down into the water encourage interaction and engagement with the river and helps to create a destination for people to go. By engaging the water I can continue the path that flows along the waterfront up past the UO Portland school of Architecture and is only broken in the zidell yards area of the front. The interior courtyard beacons you to venture down and see what surprised are in store. Coffee shops and other small carts will likely fill this square and bring life to this part of portland. The most important part of this is the interaction with Tilikum. It is the central driver of making this all possible transportation wise. It allow people to come and go with out the hassle of parking and allows residents to more easily get access to the busy streets of downtown.

