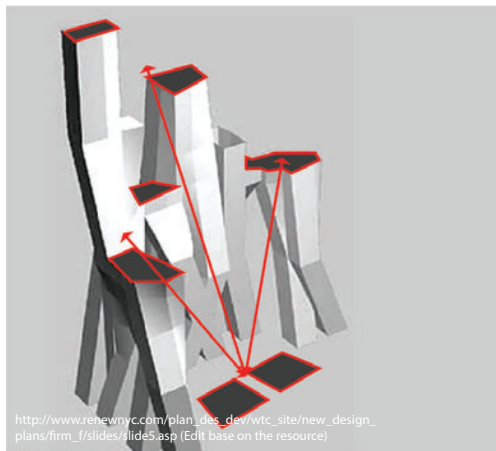
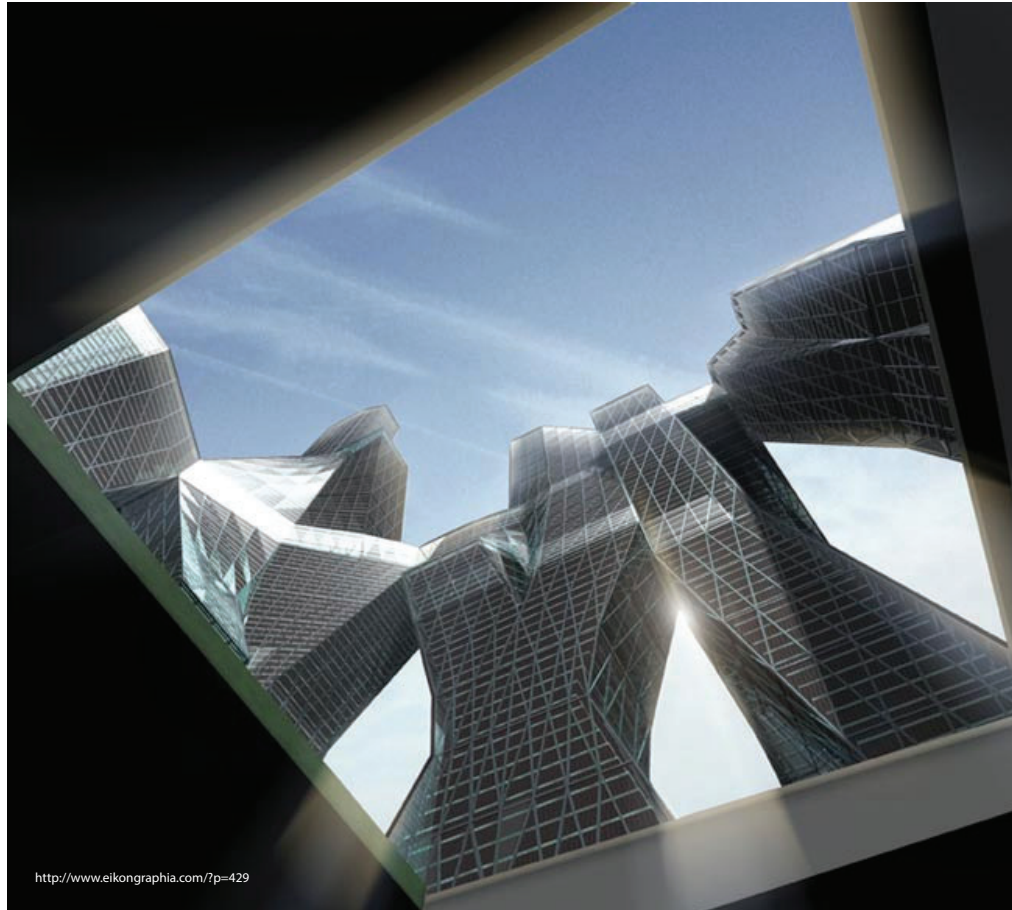


WTC

United Architects

The new World Trade Center building that designed by United Architects is one of the most unusual scheme presented in the competition. This is a giant building that means to be the tallest and biggest building in the world. It has five independently structured towers that connect by a skyway. The tallest tower is 1,620 feet, and altogether, it would provide a floor area of 10 million square feet.



Memorial

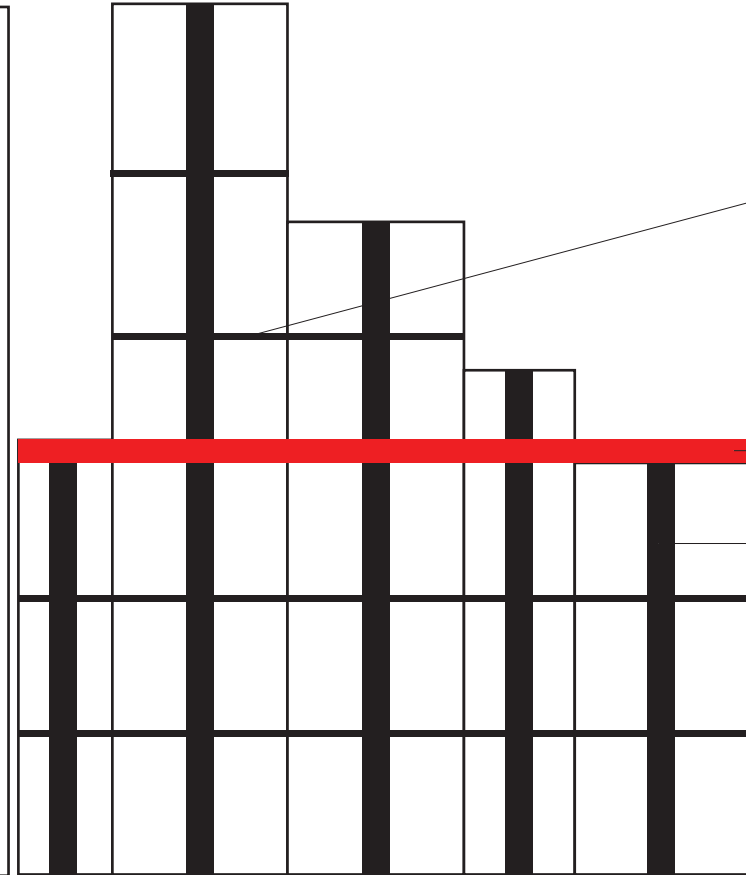
Since the building will be on the site that "9.11" happened, memorial takes an important role in the design process. The design team aims to let people experience the sacred feeling in the entire World Trade Center that gives respect to the event, so the building will provide a meaning for both a monument to the past and a vision to the future depends on where people looking at it from. For responding to the urban fabric, the building reconnects the grid across the site that also provide a flow visit experience for people on the site. These five towers stand on eastern, northern, and southern corner of the WTC site that seems to hover over the memorial.



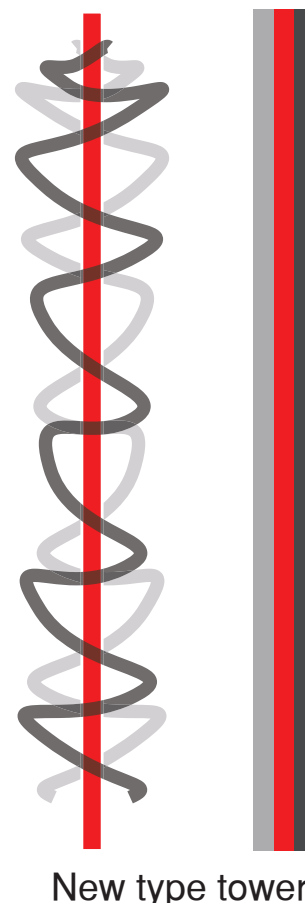
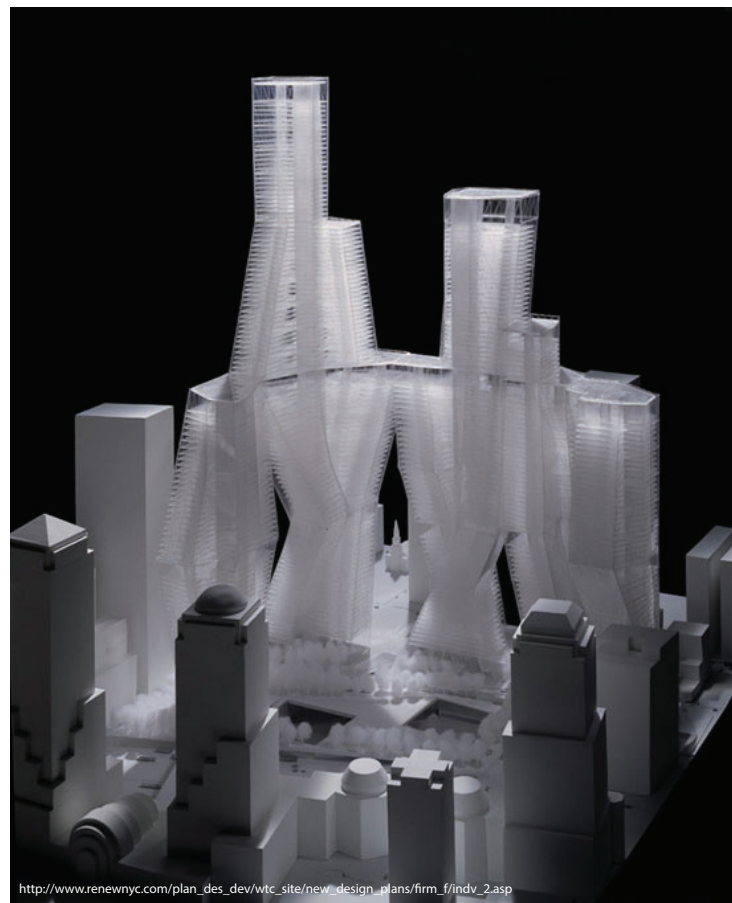
Site Connection



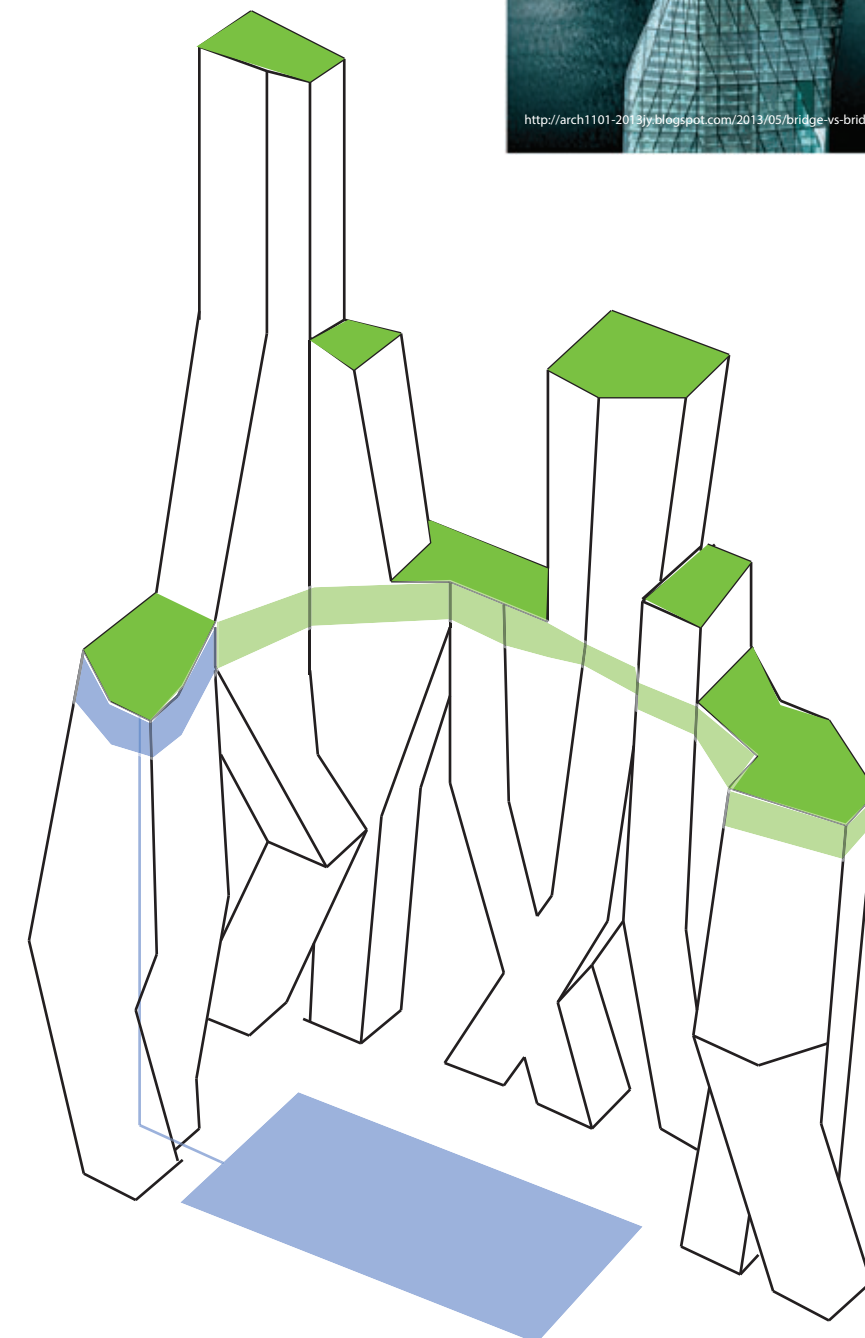
A city in sky



New Type of Tower



On the other hand, the safety is one of the most elements that design team considered in this scheme. These five towers are structurally supported independently, and each sloping tower has its own independent stairway. There are refuge areas every 30 floors. If one tower get in trouble, such as set on fire or a disaster, there are many ways for people to exit the building. They can go down to the ground and each refuge area, they can go up to the skyway, and they can also move horizontally to the next tower.



The peaks of each tower are designed to be the sky garden that not only play the role of rest green area, but also the place that let people look down to the bottom where the memorial at. This is one way that gives people a place to monument the past and keep the memory of it.

Green space

Bibliography

"LMDC." LMDC. Web. 10 Dec. 2015.

"ARCH1101 2013 Jacky Yuen." : Bridge vs Bridging. Web. 10 Dec. 2015. <<http://arch1101-2013jy.blogspot.com/2013/05/bridge-vs-bridging.html>>.

"Castell, by FOA." Eikongraphia RSS. Web. 10 Dec. 2015. <<http://www.eikongraphia.com/?p=429>>.

"The NYC That Never Was: 1 WTC and the Competition for the World Trade Center Site." Untapped Cities RSS. 4 Nov. 2014. Web. 10 Dec. 2015.