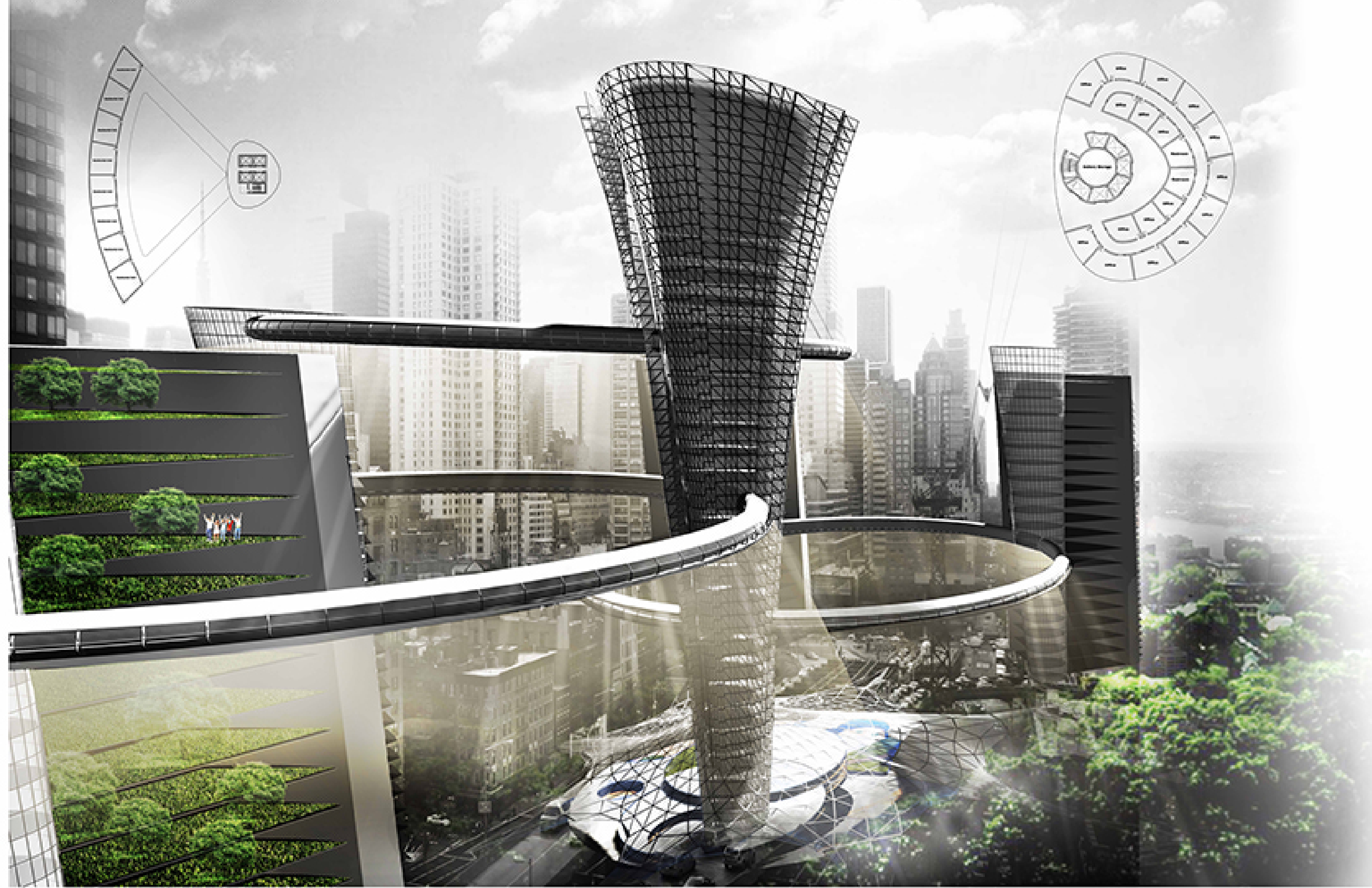


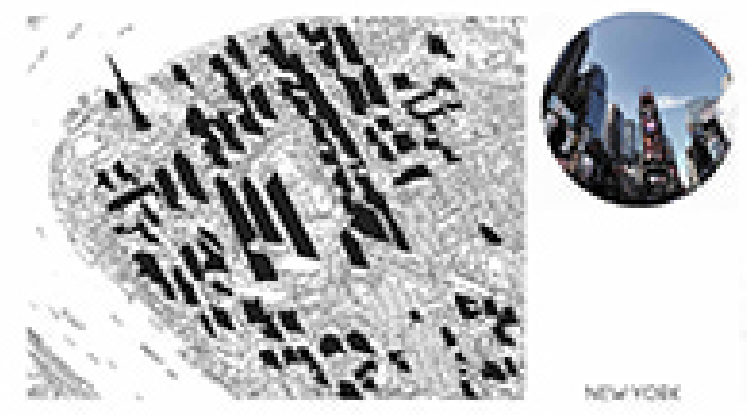
ILLUMINANCE

ARCH 584 Supplement Nancy Cheng's Studio (EVOLD Competition) By Mutai Chen & Gloria Wang

SHADOW AREAS IN CENTERS OF MEGACITIES WORLD-WIDE



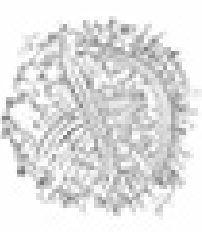
SHANGHAI



NEW YORK



TOKYO

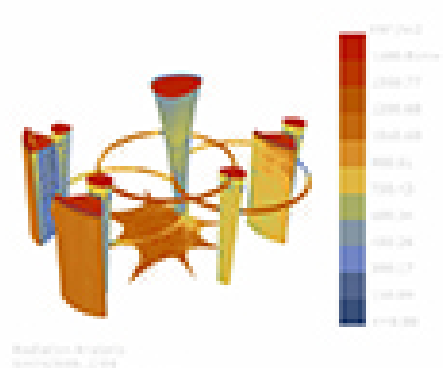
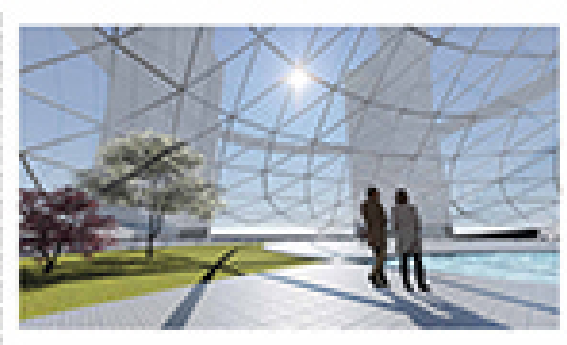
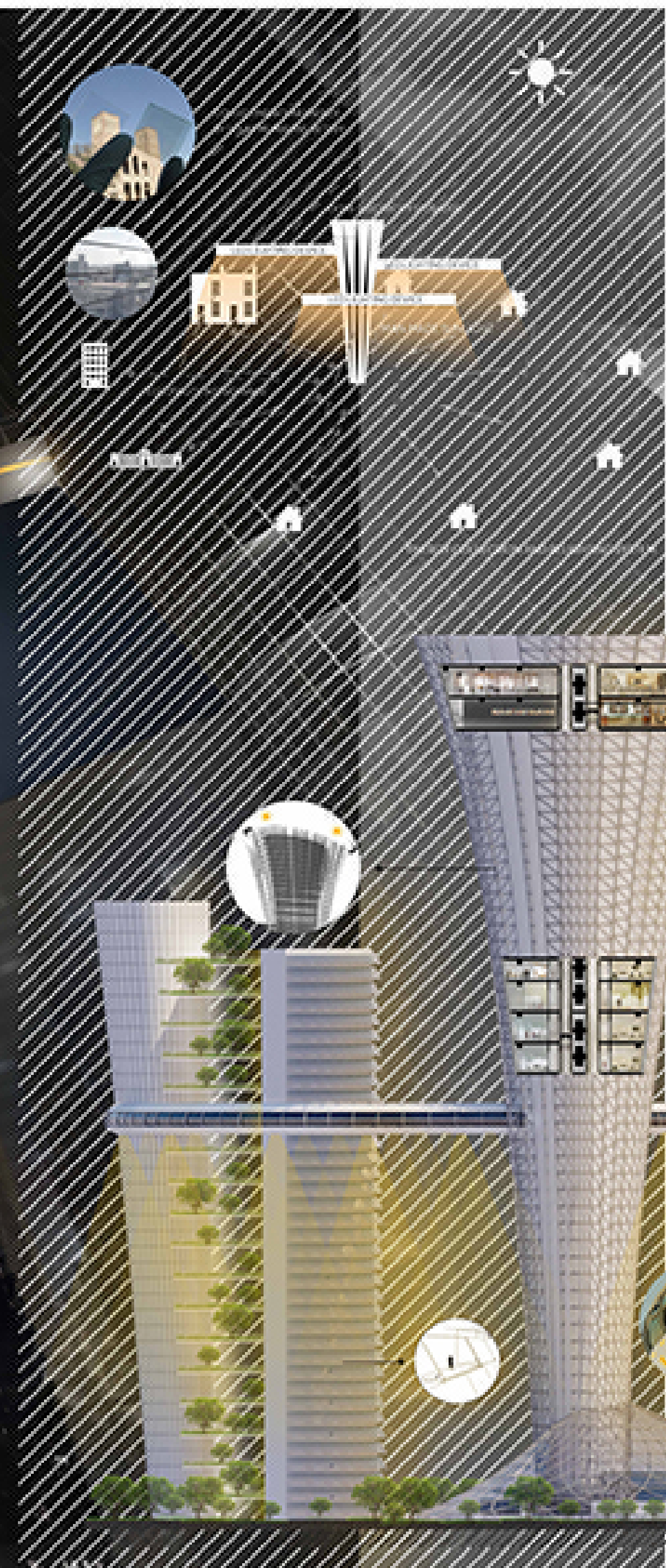


DESIGN STATEMENT

Over population in recent years has led to a series of problems, say, lack of land. This encouraged the emergence of more and more skyscrapers. These skyscrapers usually crowding in the most expensive area of cities and occupy the greatest natural resources including sunlight. So more and more people in these cities are living under shadow of other buildings. To solve this problem, we decide to make a new system to lighting the shadow areas. We called it "Illuminance". "Illuminance" collects all the solar energy of the city from buildings which use the solar membrane batteries installing on their windows. All of these solar membrane batteries forms a network connecting to the central tower providing and receiving electricity from the net-work.

ILLUMINANCE

ARCH 584 Supplement Nancy Cheng's Studio (EVOLD Competition) By Mutai Chen & Gloria Wang



CONCEPT DIAGRAM

