

What's next > U of O?



62 Leading Public & Private Institutions in U.S. & Canada

Association of American Universities (AAU) Universities



Note: for clarity, some liberties were taken with the placement of institutions

University of Colorado - Planning, Budget, and Analysis

<https://www.aau.edu/who-we-are/our-members>



Jasmine Hammerstad
Corvallis, OR
Crescent Valley HS
U Oregon 2018
Biology & Psychology
Chemistry
Physician Assistant
Graduate School



ROSALIND FRANKLIN
UNIVERSITY
of MEDICINE AND SCIENCE

Alexa Armolea
U of Oregon 2019
General Science Major
Chemistry & Biology Minors
Reno HS, Reno, NV



RCSI

ROYAL COLLEGE OF SURGEONS IN IRELAND

COLÁISTE RÍOGA NA MÁINLEÁ IN ÉIRINN

2018 U Oregon Graduates & Future Stars!!! All Double-majors in Biology & HPHY!



Lisa Huynh
David Douglas HS
Portland, OR

Donnell Marzo
McMinnville SR HS
McMinnville, OR

Britney Eng
Clackamas HS
Portland, OR





Meagan Elizabeth Barnes
2108 Biology Valedictorian
Summa Cum Laude, Phi Beta Kappa
Lakewood HS, Denver, CO



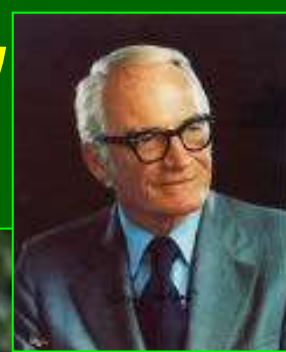


Biology Graduation!
Yes!! Life Ahead!!!



2015 U of O Goldwater Scholars!

2016 Fulbright Award, U Auckland
Cancer Society Research Centre
MS in Biomedical Science



2015 UO Women in Graduate Science Award

Kyla Martichuski
Biology & Human Physiology
Chemistry, Salem, OR

John Gillies
Biochemistry & Business
Junction City, OR



MD Program 2018



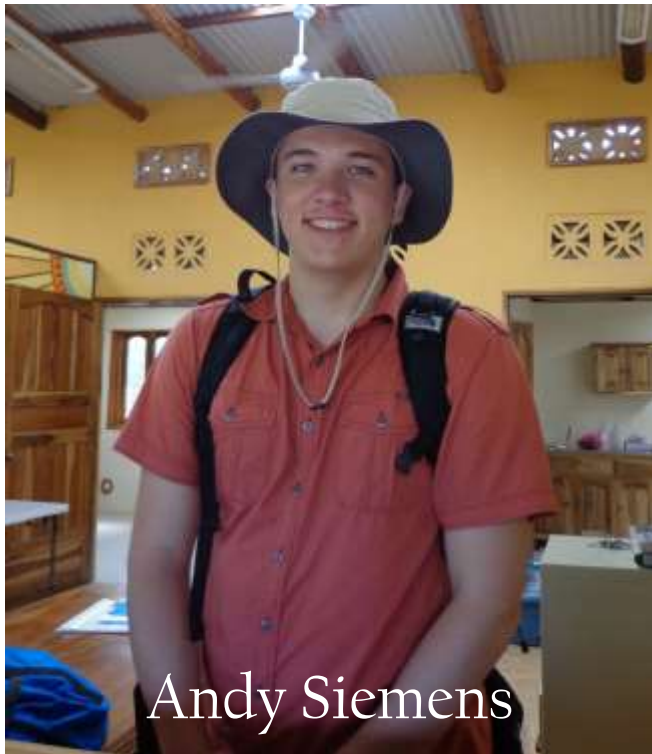
Jessica Green, CEBB
Director, Biology &
Built Environment
Center

https://www.ted.com/talks/jessica_green_good_germs_make_healthy_buildings

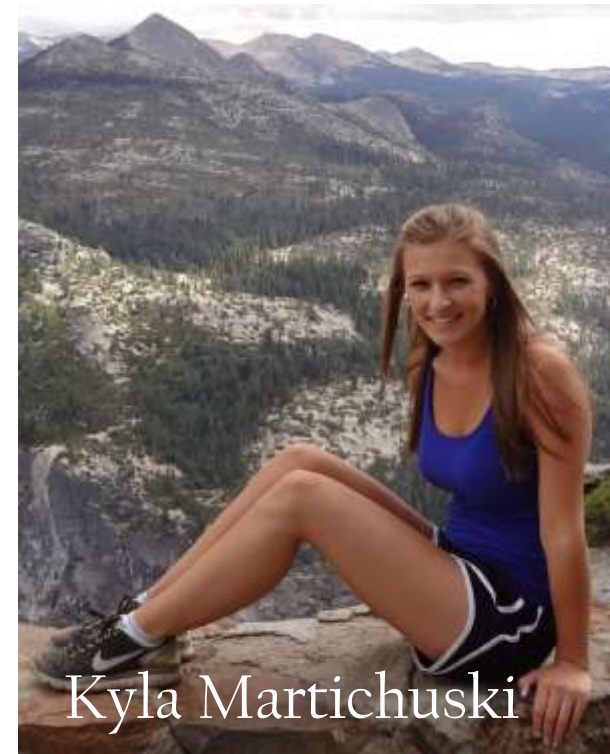
https://www.youtube.com/watch?v=GUfR_81fmLE



PhD Program 2018



Andy Siemens



Kyla Martichuski



Teale Andreason
Eugene, OR
U of O Class of 2016
South Eugene International HS
Biology & Human Physiology
Chemistry
Clark Honors College
Baylor College of Medicine
Physician Assistant Program

Kayla Murphy
San Diego, CA
Mira Mesa HS
U of O Class of 2016
Human Physiology



University of New England
MGH Institute of Health Professions
Azusa Pacific University
Western Health Science University
University of San Diego
Clinical Nurse Leadership MPH

Misha Patel, UO Biology Alumni Focus, with Paul Kaplan, MD




FERTILITY CENTER
of OREGON



DANA-FARBER
CANCER INSTITUTE



Misha Patel Beltran, MD
Medical Oncologist, Harvard
Dana Farber Cancer Institute &
Weill Cornell Medicine



OREGON



Penn
Medicine



Weill Cornell
Medicine

<https://beltranlab.weill.cornell.edu/about-us/videos>


<https://beltranlab.weill.cornell.edu/>



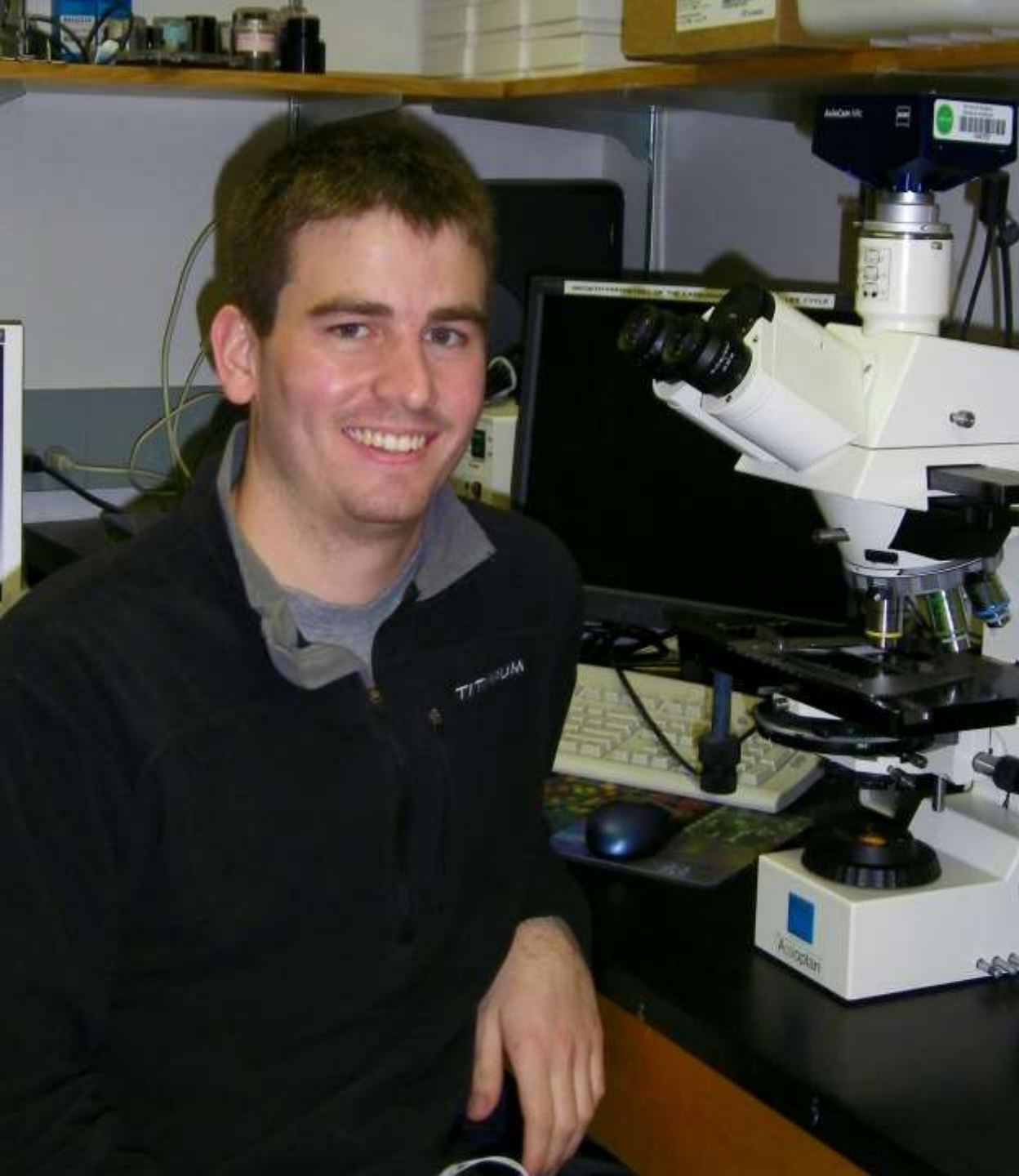
Brianna McHorse
U of O Class 2013
Eugene, OR
Sheldon HS Honors
Biology Major
Geology Minor
Clark Honors College
Graduate Schools
😊 Harvard
South Carolina
UC Berkeley





Daniel Gardner
U of O Class 2013
Eugene, OR
Sheldon HS Honors
Biology Major
Chemistry & Math Minors
Clark Honors College
Medical Schools
Boston
Harvard
 **North Carolina**
OHSU





***Josh Lupton
Class 2011
Forest Grove, OR
Biology & Human
Physiology Major
Clark Honors College
2011 Marshall Scholar
Genetics & Public
Health***



**UNIVERSITY OF
CAMBRIDGE**

**JOHNS HOPKINS
UNIVERSITY**

2013 U of O Biology Graduate!



US Army Medic
2 Tours in Iraq
Combat Medic Badge
Treating Iraqi & US
civilians/enemy,
soldiers/combatants
Tillman Military Scholar



Byron Victor Etta
Bolingbrook HS, Illinois
Biology major, Chemistry minor
Patrick Phillips Laboratory, IE²
U of O Biology, *Cum Laude*
Oregon Health & Science University
(OHSU) Medical School



Byron Etta, MD, UC Irvine Emergency Medicine Residents Class of 2020



U of O 2010 Biology Graduation Ceremony



Scott Penny
University of Kansas
MD Program



Taylor Gooch
University of Pennsylvania
JD Program



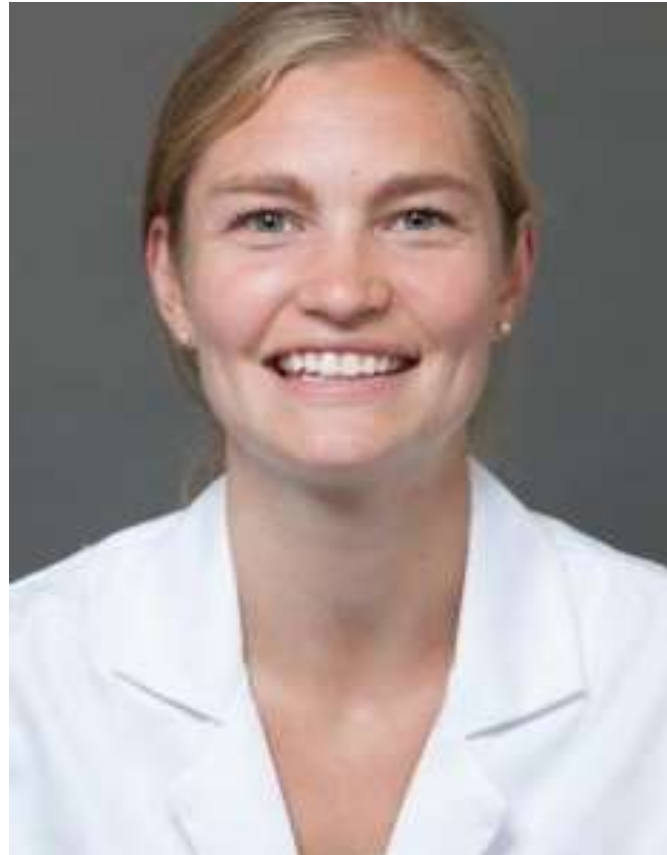
Scott Penny, MD, Resident Maricopa Radiology, 2015-2019
Internal Medicine, Banner Good Samaritan Medical Center, Phoenix, AZ
Musculoskeletal Fellowship, Duke University Medical Center, Durham NC
<http://www.maricoparadiology.com/index.php/department/residents/residents2>



Taylor Gooch, JD, University of Pennsylvania, *magna cum laude*, 2013
Senior Editor, the *University of Pennsylvania Law Review*
Clerkship, US District Court for the District of Delaware, 2013-2014
Clerkship, US Court of Appeals for the Federal Circuit, 2014-2015
Associate, Kecker, Van Nest & Peters, 2016 to present
<https://www.keker.com/Lawyers/gooch-taylor>

***Haley Peterson
Class 2009
Lake Oswego, OR
Biology Major
Chemistry Minor
Human Biology
OHSU Biomedical
Informatics
OHSU MD Program***





Haley Peterson Hostetler, MD, MSc
Combined Internship, Internal Medicine & Pediatrics
2014-2017, Residency in Pediatrics 2017 to present

<https://medicine.duke.edu/education-and-training/our-trainees/haley-hostetler>



Eric Black-Maier
Class 2009
Eugene, OR
Biology Major
Biochemistry Minor
Summa Cum Laude





University of Oregon
Department of
Biology

University of Oregon
2009



Howard Hughes Medical Institute
2013



Matt Britton &
Eric Black-Maier

HHMI
HOWARD HUGHES
MEDICAL INSTITUTE



DukeMedicine

Rachel Shumate, U of O Class 2009, *cum laude* U Queensland Medical School, Class 2014



 Lane
Community College™
ACHIEVING DREAMS



Rachel Anne Shumate Calix, MD
Neurologist, New Haven, CT
Residency in Neurology 2014 to present
Yale University School of Medicine
Neurology Class of 2019

<https://medicine.yale.edu/neurology/education/residency/residents/>

Albert Einstein College of Medicine
of Yeshiva University

Chicago Medical School
@ Rosalind Franklin University

Columbia University
College of Physicians & Surgeons

Jefferson Medical College
of Thomas Jefferson University

Oregon Health & Science University
School of Medicine

Temple University School of Medicine



The Ohio State University
College of Medicine



University of Illinois College of Medicine

University of Hawaii
John A. Burns School of Medicine



Linden Lee, 2007
Punahou HS
Kailua, Hawaii
MD, Anesthesiology
Columbus, Ohio!





Hats Off to Allison & 2007 Class!

Univ of California @ Berkeley
School of Optometry

Indiana University
School of Optometry

Illinois College of Optometry
(Chicago)

ACCEPTED TO ALL!
UC Berkeley Graduate!!

OD, Doctor of Optometry
Spokane WA!!!



Allison Coit, 2007
St. Vincent HS
Petaluma, California



Hats Off to Megan & 2006 Class!



Megan Britton
Klamath Falls, OR
Biology & Univ of Oregon
Class Valedictorian 2006!!
OHSU Dental School

OHSU's Megan Britton & Justin Cochell
check radiographs on *Give Kids a Smile Day!*



***Megan Kuhn
Class of 2005
RD Clark HC
Biology major
Chemistry minor
Summa cum laude
U New Mexico
Medical School***



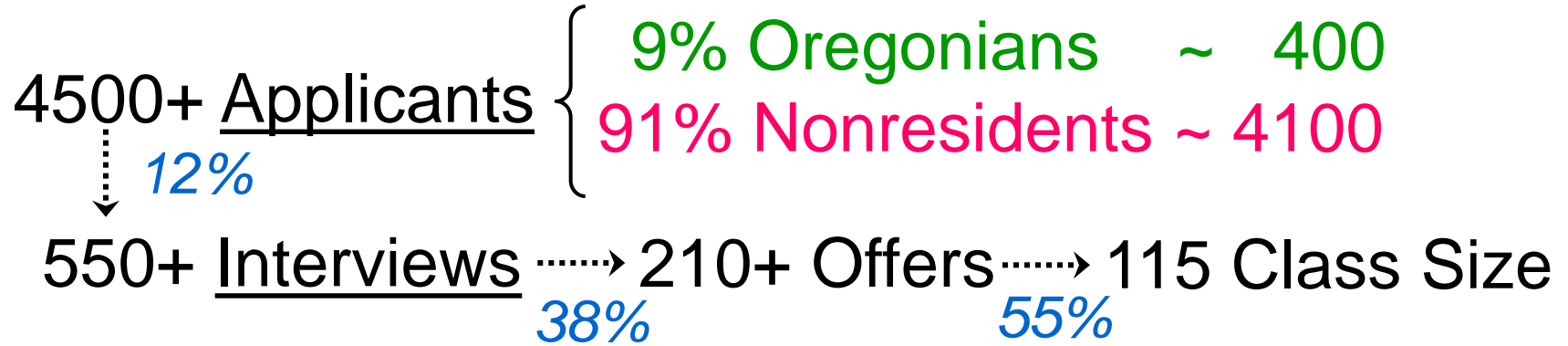
THE UNIVERSITY of
NEW MEXICO



Embrace & Enhance the Tradition!!



Medical School Sample Admissions Statistics



All Applicants Entering Class? $\sim 2.5\%$

Class profile? $\left\{ \begin{array}{l} 70\% \text{ Oregonians} \sim 80 \sim 20\% \\ 30\% \text{ Nonresidents} \sim 35 \sim 0.9\% \end{array} \right.$

Age 26.2

GPA 3.63, Science GPA 3.56

MCAT 31***

30% Prior applicants

70+ unique undergraduate institutions

***** MCAT format changes 2015**

**286 Medical School Matriculations 2000-2009! Wow! x
= ~29/yr, High 48/yr, Low 19/yr, 26-46% Acceptance!**

Alabama Albany NY Albert Einstein Arizona Baylor Bastyr
Boston Case Western Chicago College of Osteopathic
Medicine Chicago Med Cincinnati Colorado Columbia
Creighton Dartmouth DMU/COM Dre/UCLA Drexel Duke E.
Tenn Emory George Washington Georgetown Harvard
Hawaii/JAB Howard Iowa Jefferson Johns Hopkins Kirksville
College of Osteopathic Medicine Keck LomaLinda LSU MC
Wisconsin MCP Hahnemann Meharry Miami Michigan St
Minnesota Minn-Minn Mt Sinai Nevada New Mexico New York
Medical North Carolina Northwestern NYU Ohio/Toledo Ohio
State OHSU Ohio University College of Osteopathic Med Penn
State Rochester Rosalind Franklin S Dakota St George's St
Louis U SUNY Temple Texas/Houston Toledo Tufts Tulane U
Arkansas UC Davis U Chicago-Pritzker UCLA UCSF U Illinois
U Iowa U Miami U Michigan U Nevada U New Mexico U
Pittsburgh U Rochester U Washington U New England College
of Osteopathic Med Uniformed Services/Baylor Consortium U
Penn U Southern California Utah U Washington Vanderbilt VA
Commonwealth/Medical College of VA
Weill Medical/Cornell West Virginia

NB: Thanks UO's
Arwen Spicer!



CONGRATULATIONS
GRADUATES

43-59% Applicants from U of O
Accepted to Medical School
2011-2016!

PhD vs. MD Committees? Medical-Scientist MD-PhD Degree?

PhD

Committees battle here!

MD

1. Little interest in #s but red flags!
80th vs. 75th %ile

2. GRE OK, but again red flags!
May not be required

3. Research crucial. Productive
in unstructured environment?

4. Recommendations crucial

5. Research experience x 2!

NB: Thanks to Ed McCleskey,
formerly Vollum Institute
OHSU, now HHMI!

1. Extreme concern about #s
Decades of exams, # cutoffs!
3.65 GPA↑ OHSU, 3.35 GPA↑ US

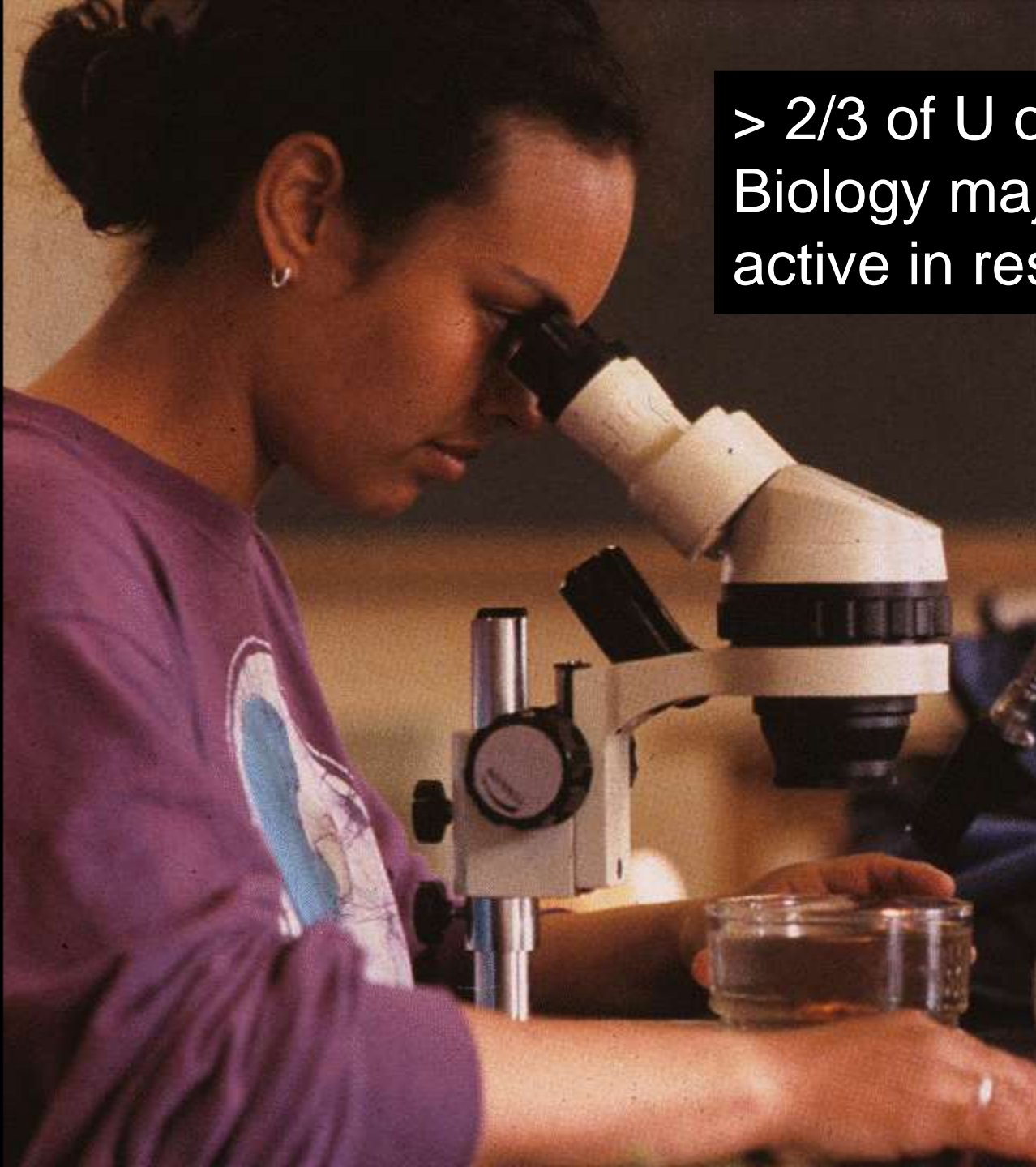
2. Don't underestimate MCAT
< 2015: ≥10, 10, 10. ≥2015: 510-
515? (528 max). West Coast
more laid back vs. East

3. Research distinguishes.

4. Recommendations crucial

5. Local, regional, national &
international medical internships

> 2/3 of U of O
Biology majors
active in research!





Jeremy Arnold with two British-trained Tanzania Physicians.



Ross Anderson near Indo-Paki border







Cheetah

CONSERVATION FUND



Laura Gayton
Biology Major
RD Clark Honors
OHSU MS, Nurse
Midwifery Program





NORTHWEST
WOMEN'S CLINIC



Laura Grace Gayton, CNM
Advanced Practice Midwife
Northwest Women's Clinic, Portland, OR
Carilion Clinics Obstetrics & Gynecology
Blacksburg & Christiansburg, VA

<https://www.carilionclinic.org/providers/laura-g-gayton-cnm>

What do I do if I don't have the grades, but still love medicine?



*PA?? MS Biomed,
Post-Bac, NP,
LPN, RN,...
Still ≥ 3.2 GPA*



Don't give up, but be realistic!



**Universidad
Autónoma de
Guadalajara**





Jose Ramon Partida
Student Advisor / Recruiter
Universidad Autonoma de Guadalajara
School of Medicine
uagsom@uag.edu, 1.800.531.5494





KGI

KECK GRADUATE INSTITUTE

Joon Kim, EdD, Director

<http://www.kgi.edu/faculty-and-research/joon-kim>



Postbac Premedical Certificate (PPC)

- Best of Academic Enhancer & Special Masters
- Enhance GPA in interesting courses
 - Molecular Basis of Disease
 - Rare Diseases
 - Medical Devices and Diagnostics
 - Pharmacology
- Prepare for medical school admissions
 - MCAT preparation
 - Clinical and research experience
 - Interview skills
 - Connect with medical schools
- Explore alternative careers
- Optional 2nd year to earn MBS, MENG, or MS



PhD, Academia & Research

VS.

Pharmaceutical Professionals

VS.

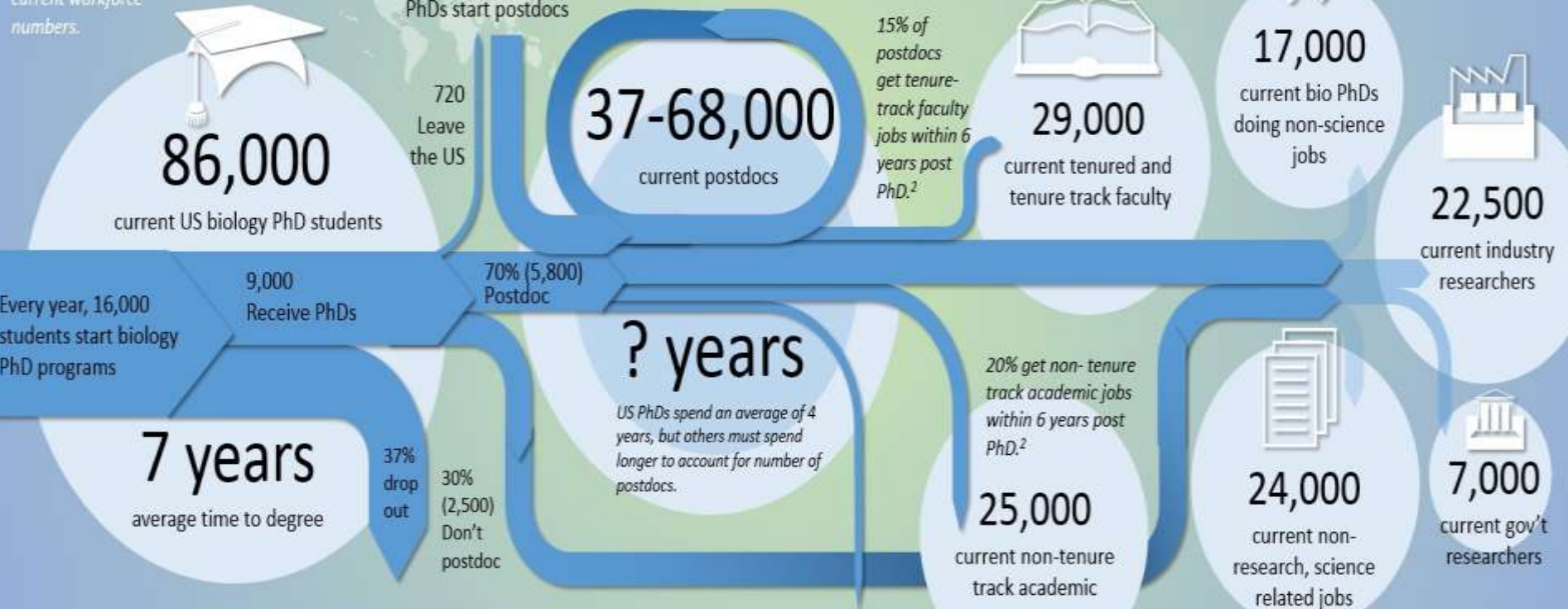
Medical Doctors/PA/Nurses

Where will a biology PhD take you?

A faculty job is an "alternative" career.

At this rate, <8% of entering PhD students will become tenure-track faculty. Yet, 53% rank research professorships as their most desired career.³

Arrows represent annual fluxes. Circles are total current workforce numbers.



Sources:
 1 - Science Careers Annual Postdoc Survey (2012) <http://goe.gi/nmVtCN>
 2 - doi:10.1038/472275a <http://www.nature.com/news/2011/110420/full/472275a.html>
 3 - Sauerbrenn & Reich 2012 PLOS ONE, DOI: 10.1371/journal.pone.0096307
 Unless otherwise noted, NIH Biomedical Workforce Working Group (2012)



KGI

KECK GRADUATE INSTITUTE



Postbac Pre-PA Certificate (PPA)

- New for Fall 2018
- Enhance GPA in PPA specific courses
 - Human Anatomy
 - Human Physiology
 - Microbiology
 - Medical Terminology
- Prepare for PA program admissions
 - Earn clinical hours
 - GRE preparation
 - Mock interviews
 - Connect with PA schools
- Highly personalized mentoring
- Optional 2nd year earn MBS, MENG, or MS



Master of Science in Human Genetics and Genetic Counseling (MSGC)

- Genetic counselor training providing risk assessment, education & support to individuals and families with or at risk for inherited conditions
- Students gain experience in many settings
 - Prenatal
 - Pediatric
 - Adult disease
 - Cancer
 - Industry/lab
 - Specialty clinic



Master of Science in Human Genetics and Genomic Data Analytics (MSGDA)

- Combines human genetics & applied life sciences with an innovative human genomics curriculum to prepare students for the exciting field of genomic data analytics
- Graduates of the program:
 - Translate patient sequencing data into actionable clinical recommendations
 - Bridge the gap between research scientists & clinicians

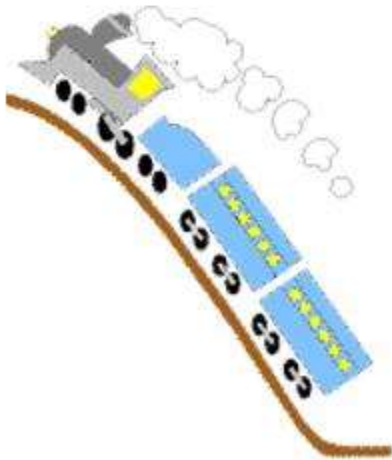
PASSION!



PATIENCE!



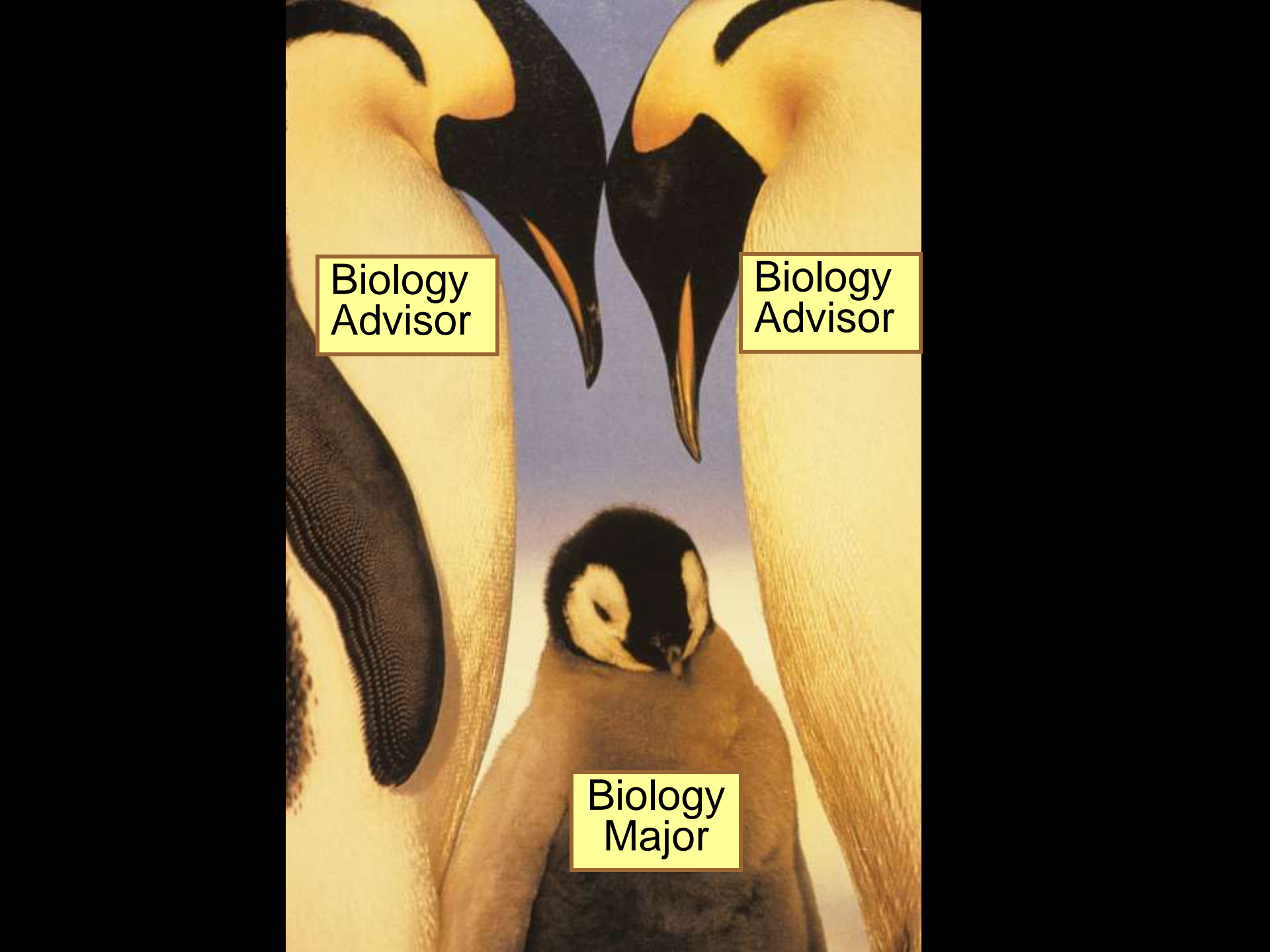
PERSISTENCE!





BIVINS &



A photograph of two adult King penguins and a chick. The adult penguins are on the left and right, with their heads tilted towards each other. The chick is in the center, looking down. Three text labels are overlaid on the image: 'Biology Advisor' on the left adult penguin, 'Biology Advisor' on the right adult penguin, and 'Biology Major' on the chick.

Biology
Advisor

Biology
Advisor

Biology
Major





Time-out for discussion!

