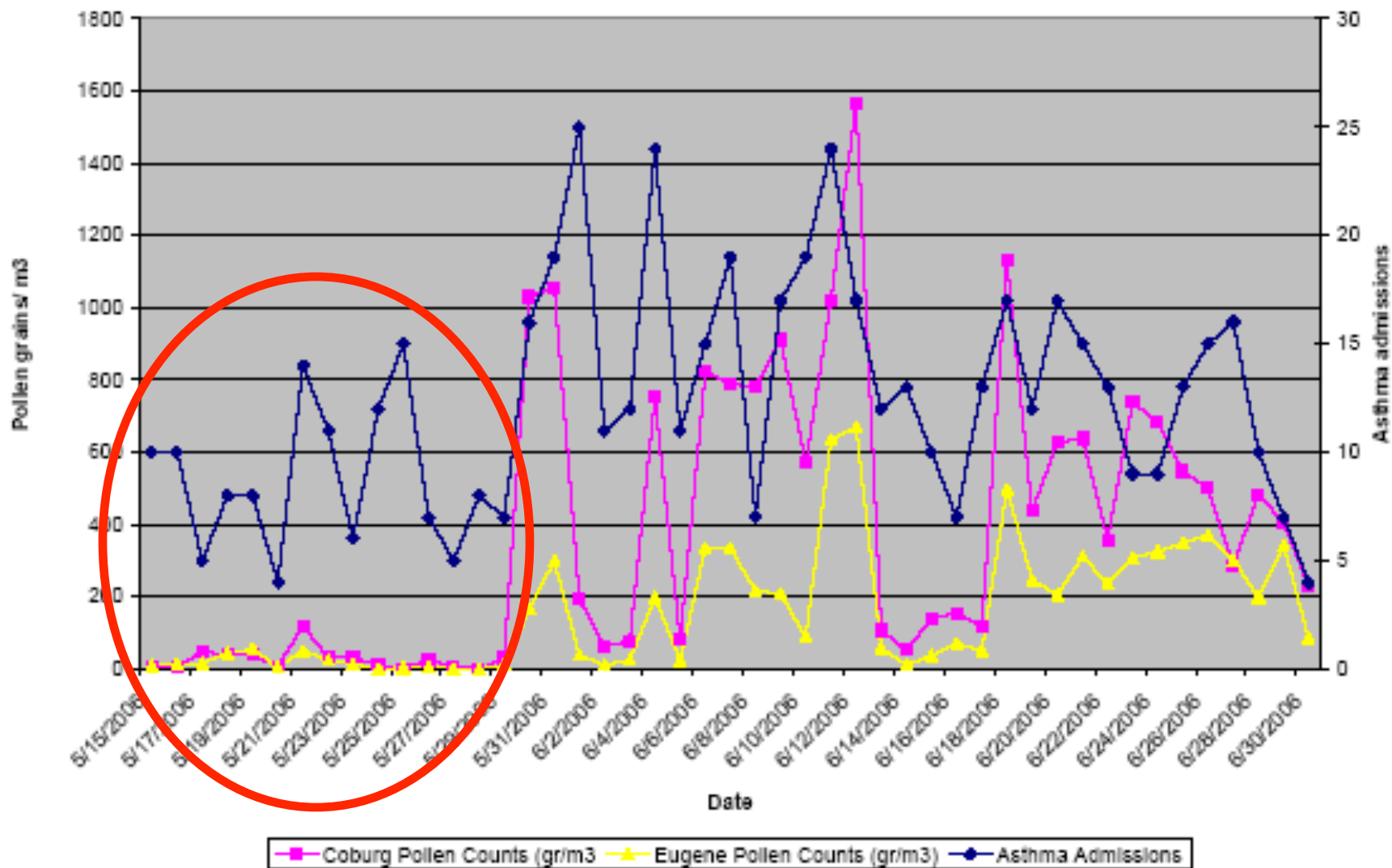
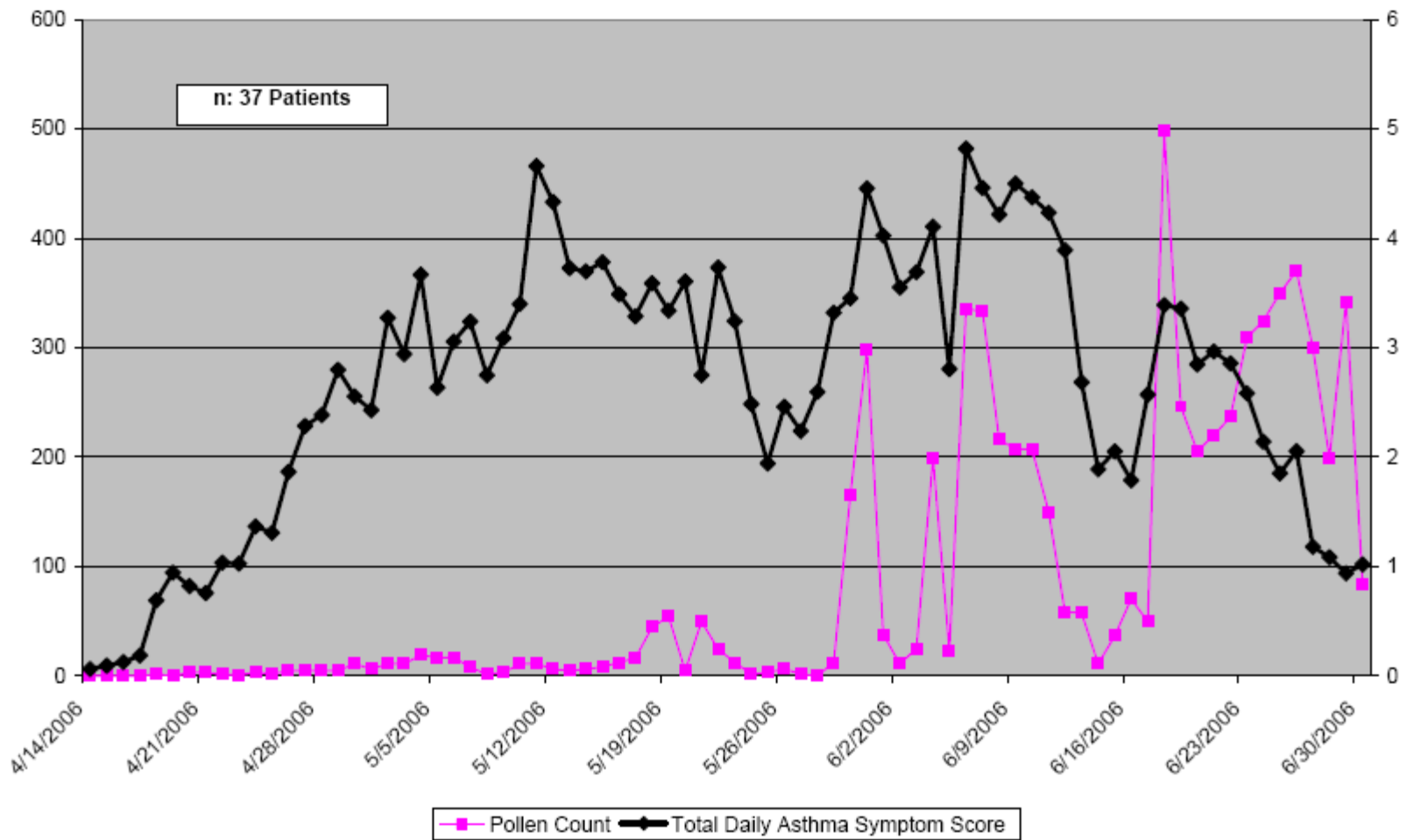


Acute Asthma Due to Grass Pollen in Oregon

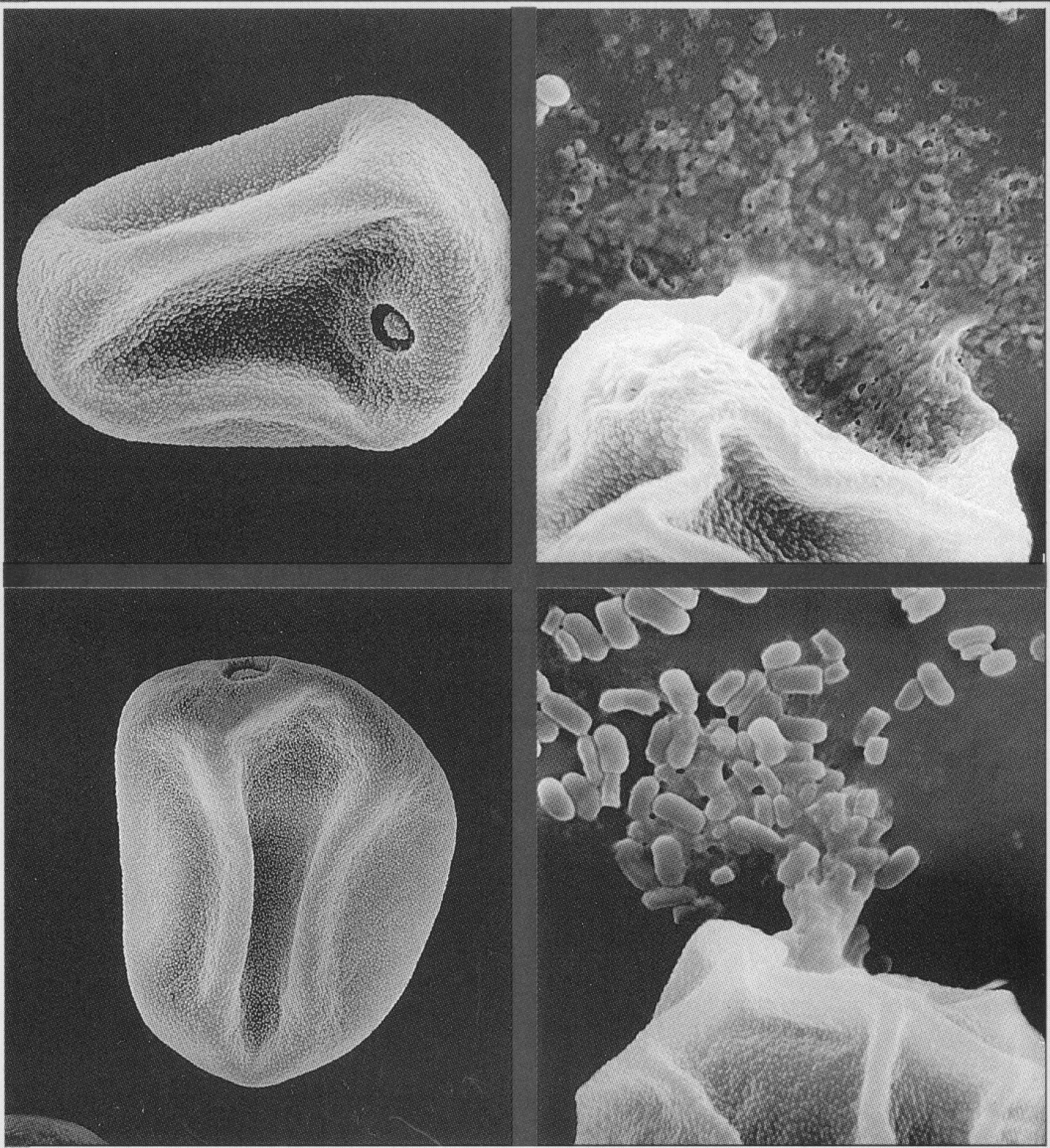
2006



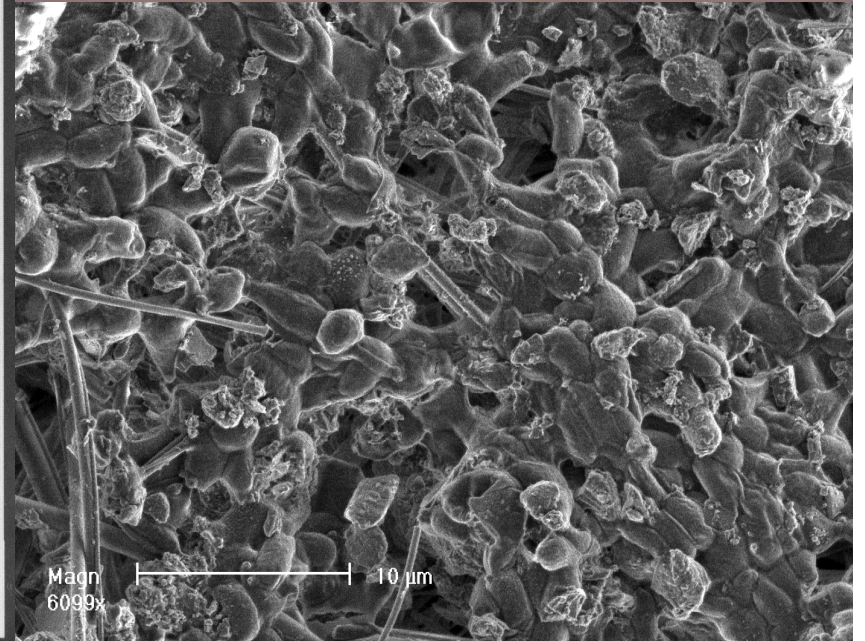
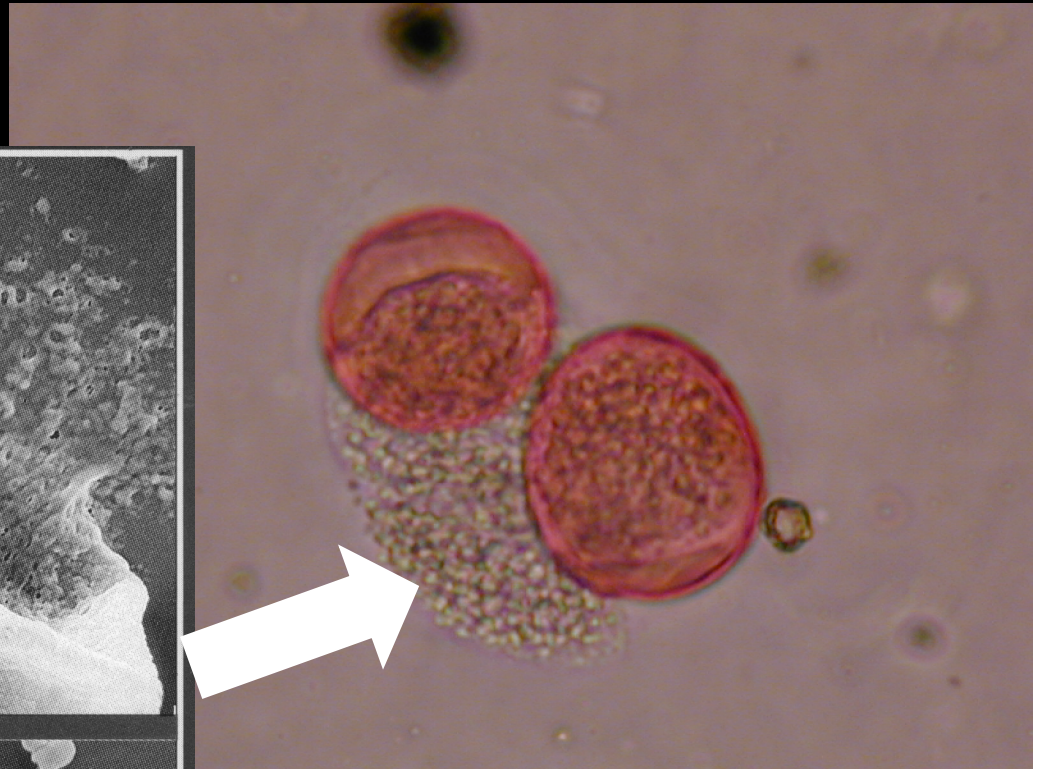
Grass Allergic Asthma Patients with Asthma Symptoms to Grass Pollen Peaks Eugene, OR 2006



Pollen Particles



Release of small particles from hydrated grass pollen
(a detailed explanation of the figure appears on page 5A)



EUDORA HULL SPALDING
LABORATORY OF ENGINEERING

