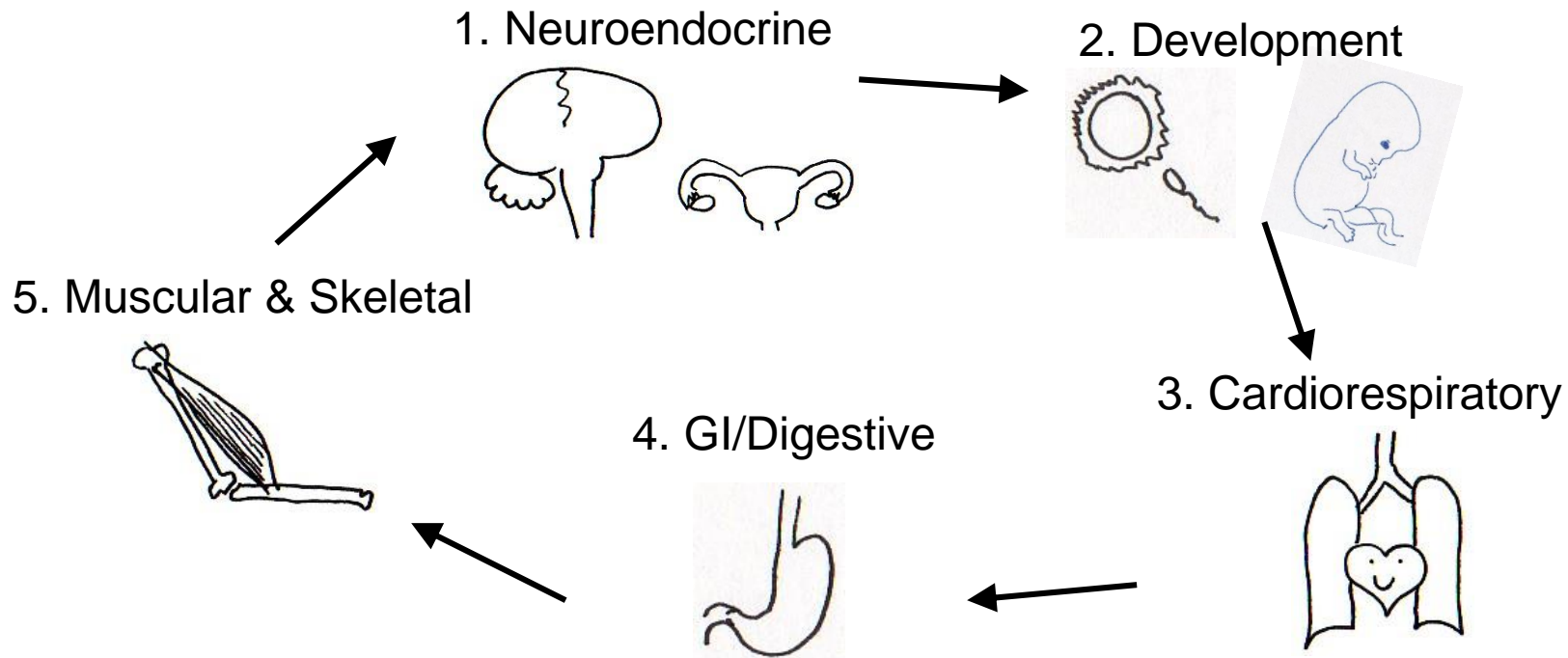


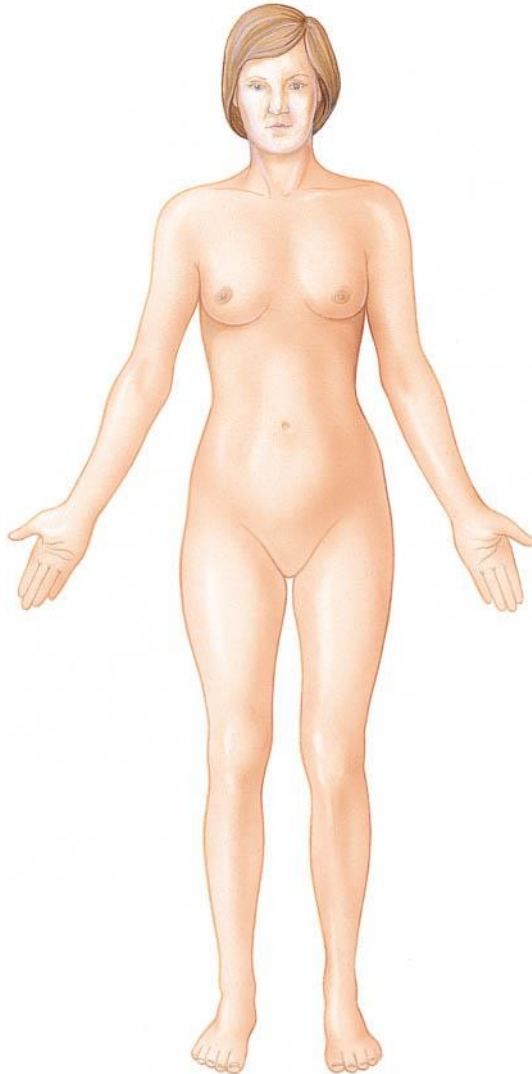
BI 121 Lab 2: Introduction to Anatomy & Physiology

- :00 **I. Attendance cards**
If your name is not called, please see us! Thank you!
- :05 **II. Anatomical position**
- :08 **III. Directional terms**
- :11 **IV. Action terms**
- :15 **V. Group rotations** ~5-7 min/station



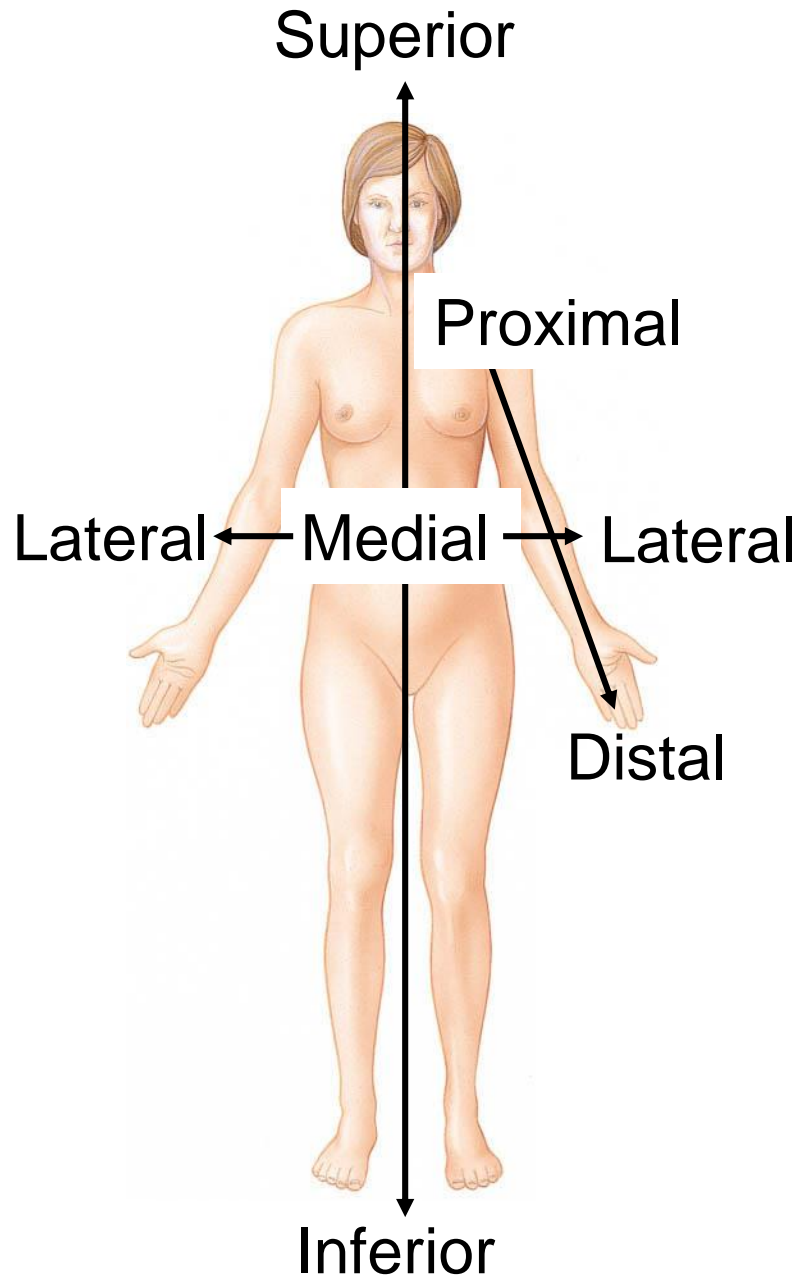
Anatomical Position: Reference for Anatomy

Anterior View

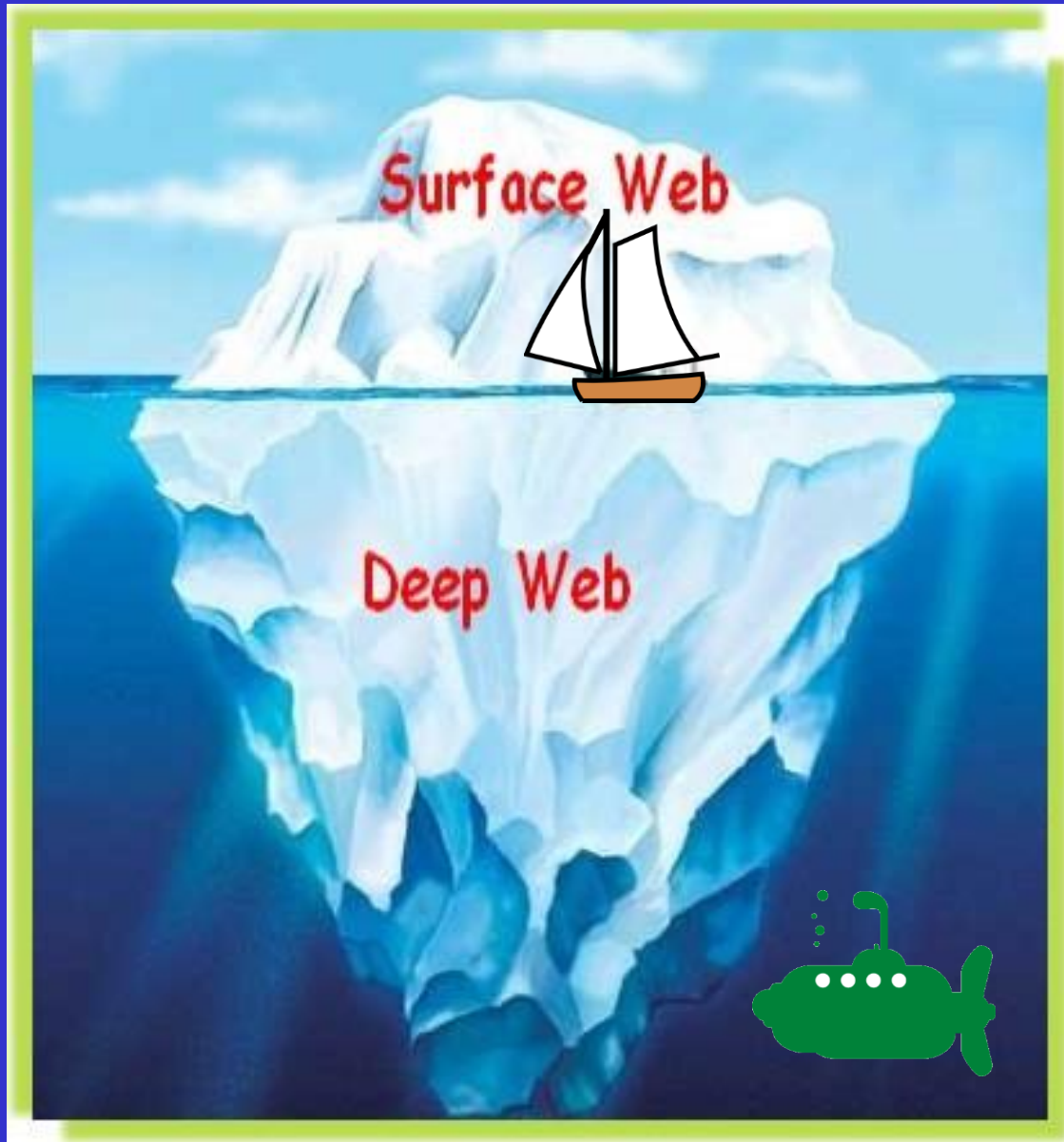


Posterior View

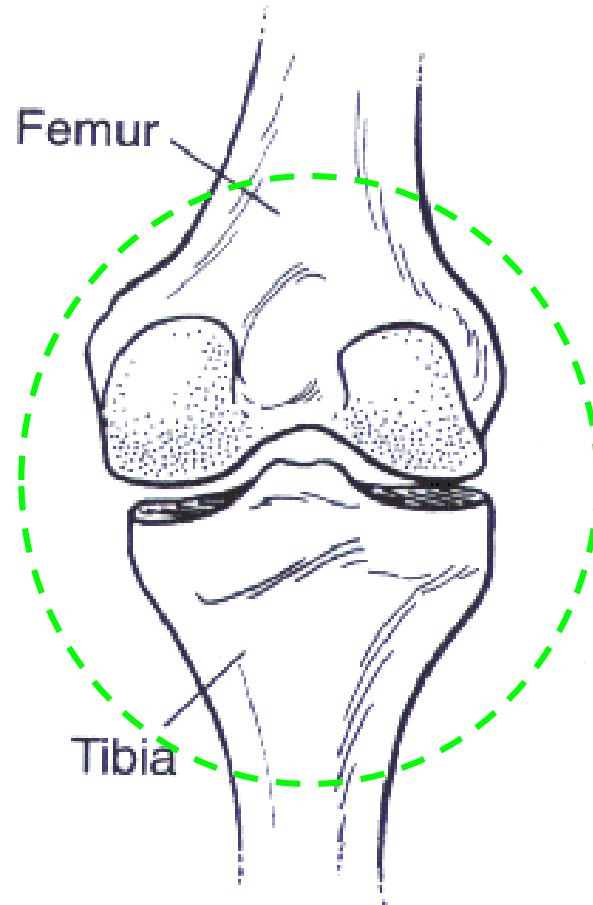




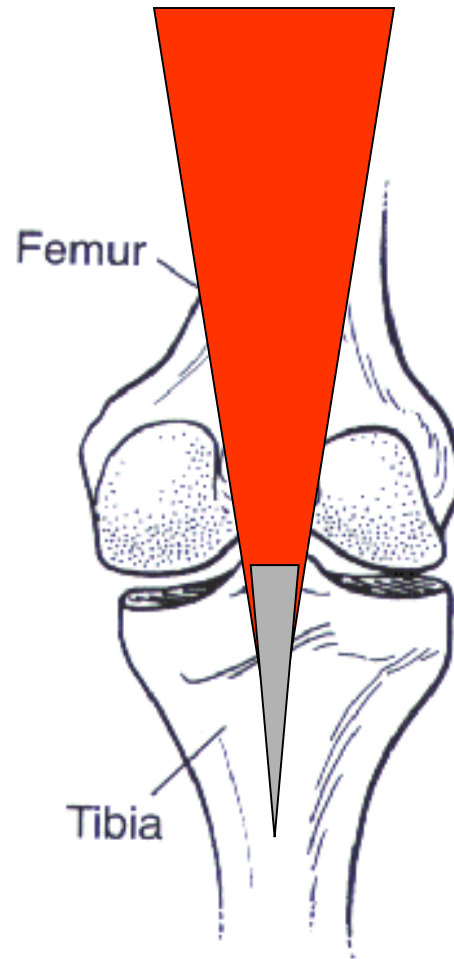
Superficial vs. Deep?



Joint. Simply a Place Where 2 Bones Meet!

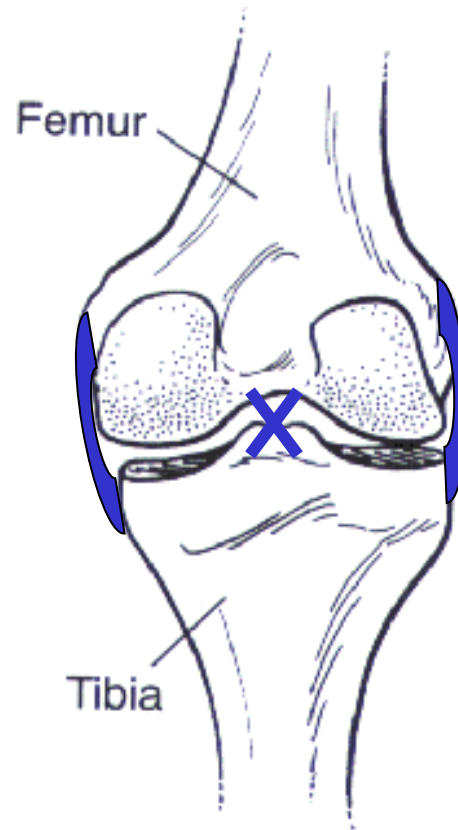


Muscles: Cross Joints by Way of Tendons

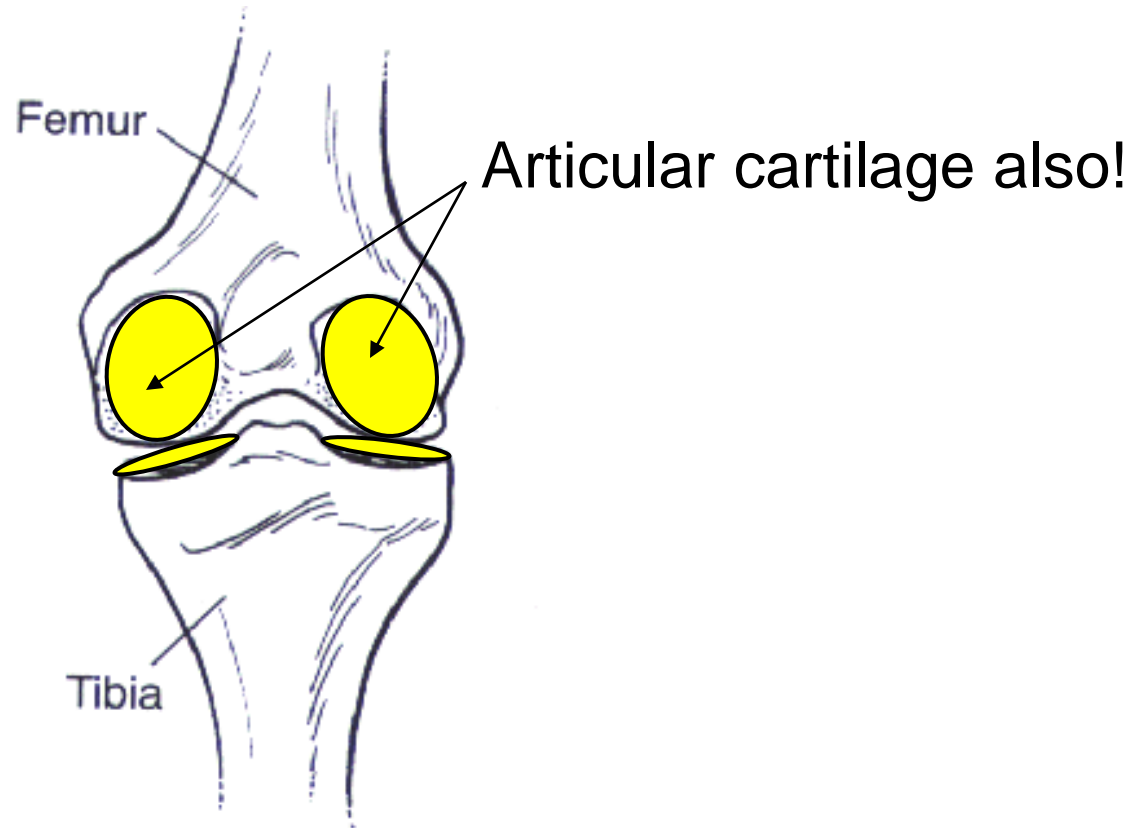


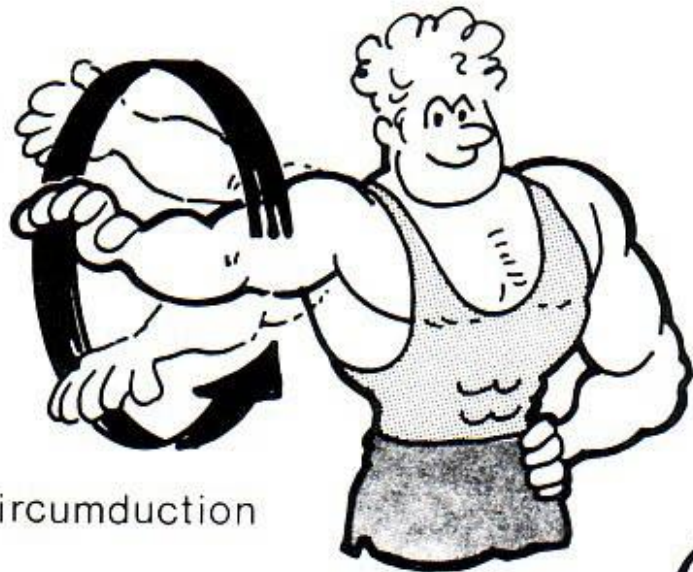
Tendons: Staple Muscles to Bones!

Ligaments: Connect Bone to Bone!

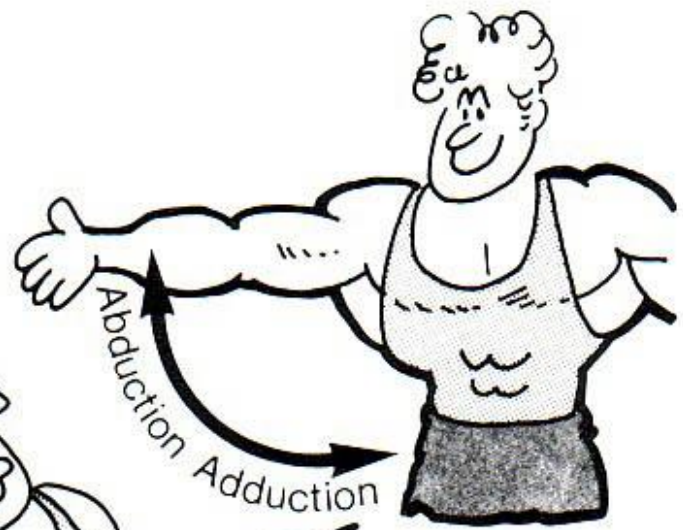


Cartilage: Cushion Between Bones!

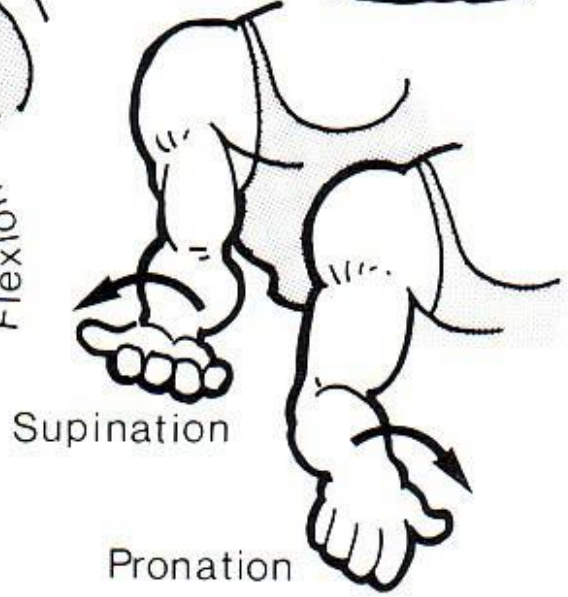




Circumduction



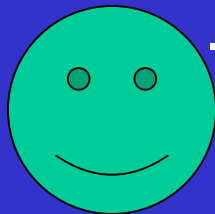
Rotation
(about long axis)



Pronation

Mystery Structure-Function Day

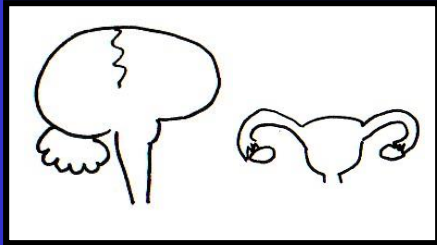
1. Your group should have 4-6 people at your 1st station.
2. Answer as many questions as possible with your group.
3. Collaborate, collaborate, collaborate!
4. Written references/resources are fine, but not instructors.
5. Please, no photography, images or copies of any kind.



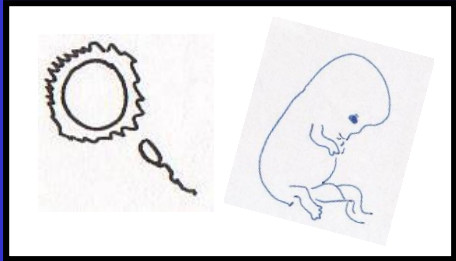
...Above all have fun!

Group Rotations

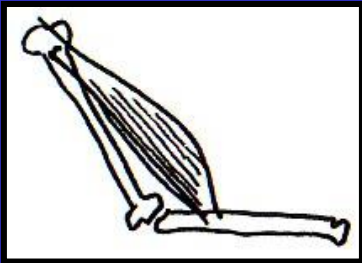
1. Neuroendocrine



2. Development



5. Muscular & Skeletal



4. GI/Digestive



3. Cardiorespiratory

