

# BI 121 Lab 5 Blood Chemistry



... Heck yeah! Lifetime, personal data again!

## I. Attendance

## II. Safety in Handling Live Tissue Specimens

- A. Thanks for no food, drink, or gum in lab today!
- B. Wash hands before; 70% ethanol; wash hands after
- C. Handle only your own specimen
- D. Partition & dispose of specimens

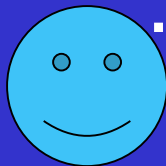
## III. What's Blood Typing ?

- A. ABo System?
- B. Rh or Rhesus factor?
- C. Why important?

## IV. Blood Glucose ?

- A. What is it?
- B. How measured? Blood, urine + GTT
- C. Why important?

***No food, drink or gum in lab today! Thanks sincerely!***



**...Healthy, tasty & fresh, but not in lab!!**

# PREPARATION



1

WASH & DRY



2

ALCOHOL



3

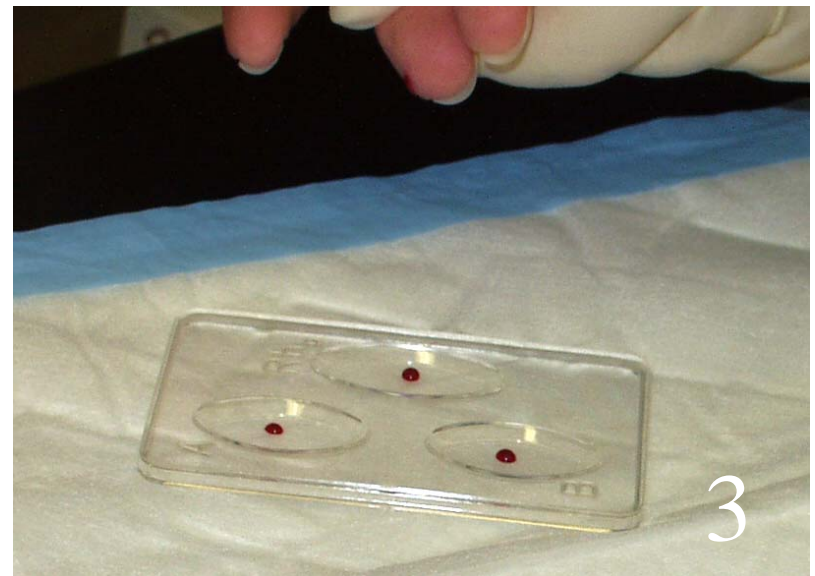
# SAMPLE+TESTS



OBTAIN  $\mu$ SAMPLE



BLOOD GLUCOSE



BLOOD TYPING

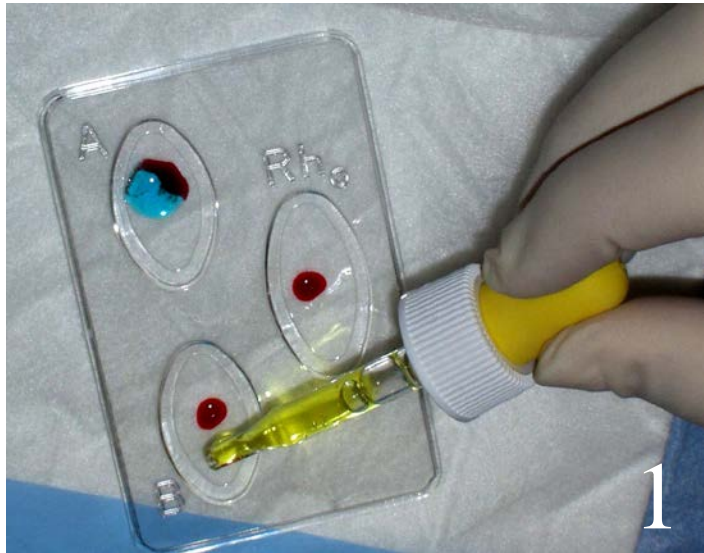
Glucose:  
Sugar in blood



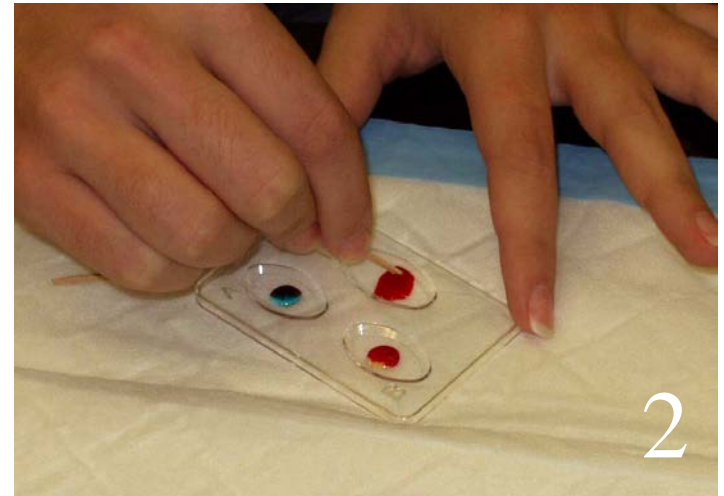
Record in  
Notebook  
w/dominant  
hand!

Normal: 70-99  
Pre-Diabetes: 100-125  
Diabetes:  $\geq 126$  mg/dL

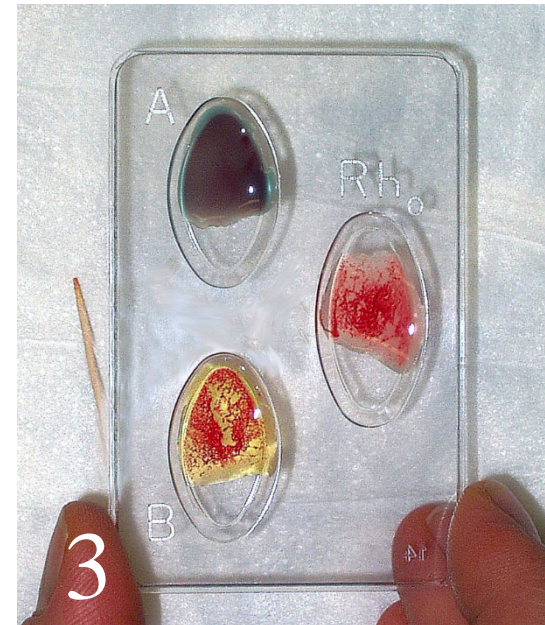
# BLOOD TYPING



ADD ANTISERA



MIX W/TOOTHPICKS



READ & RECORD!!

# CLEAN-UP!



FOLD DIAPER



BLOOD PRODUCTS



REWASH!!

# *Blood Chem Lab Q?*

