

BI 121 Lab 2: Introduction to Anatomy & Physiology

:00 *I. Attendance cards*

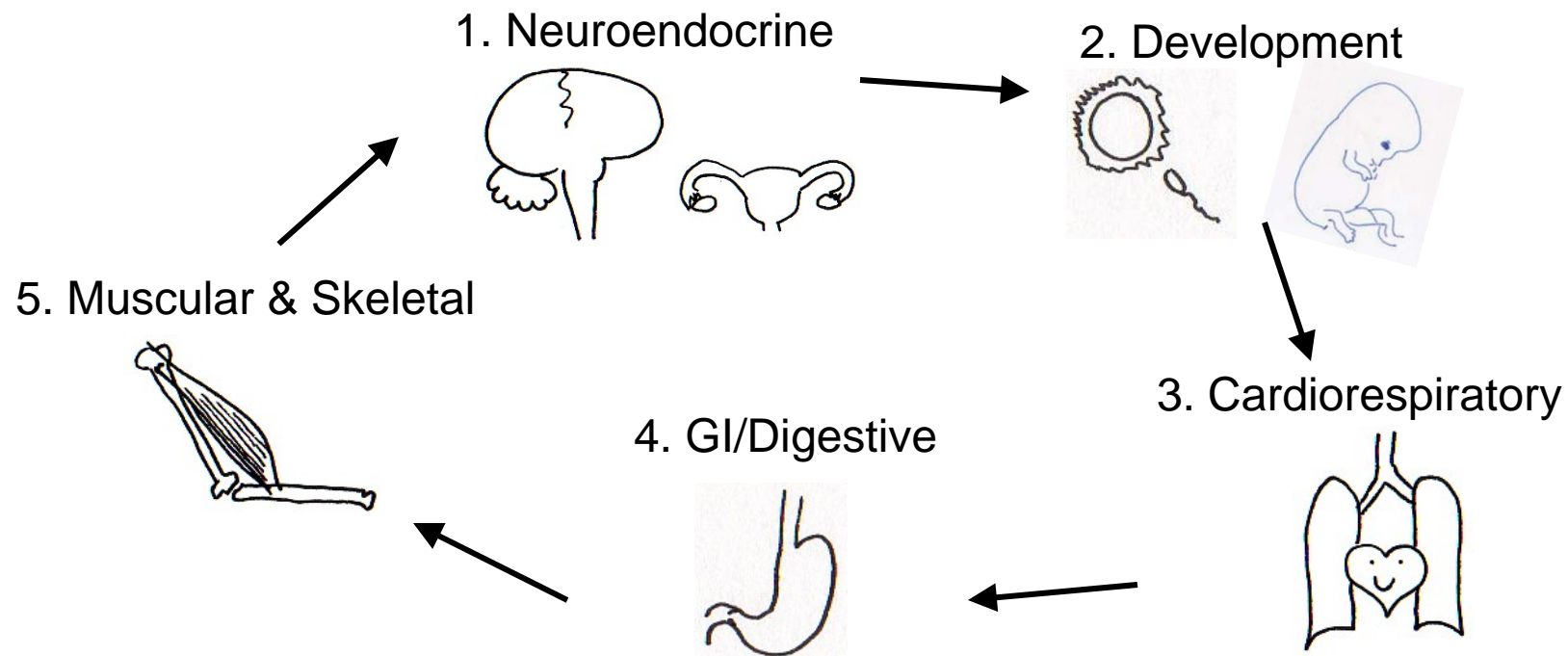
If your name is not called, please see us! Thank you!

:05 *II. Anatomical position*

:08 *III. Directional terms*

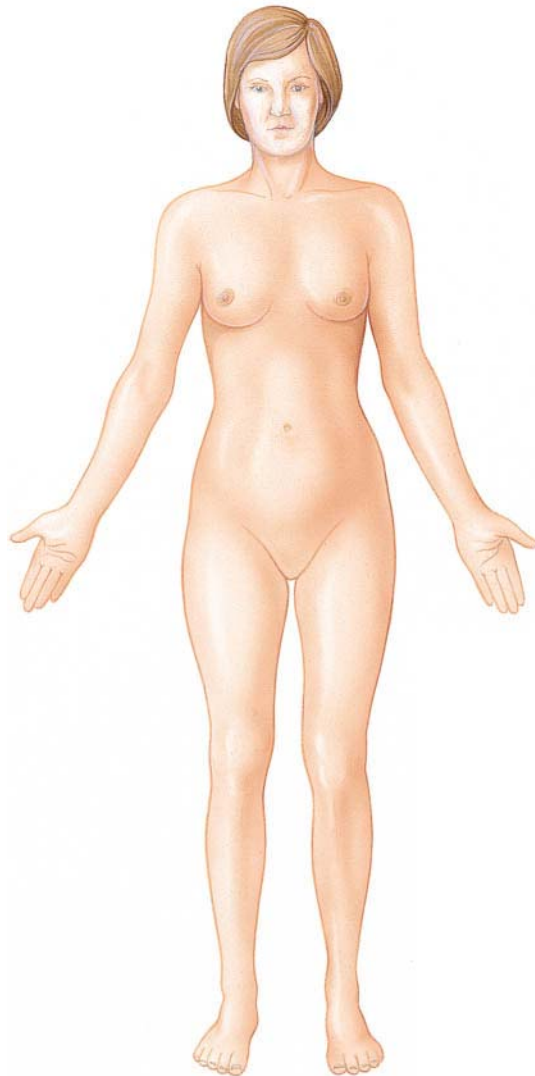
:11 *IV. Action terms*

:15 *V. Group rotations ~5-7 min/station*



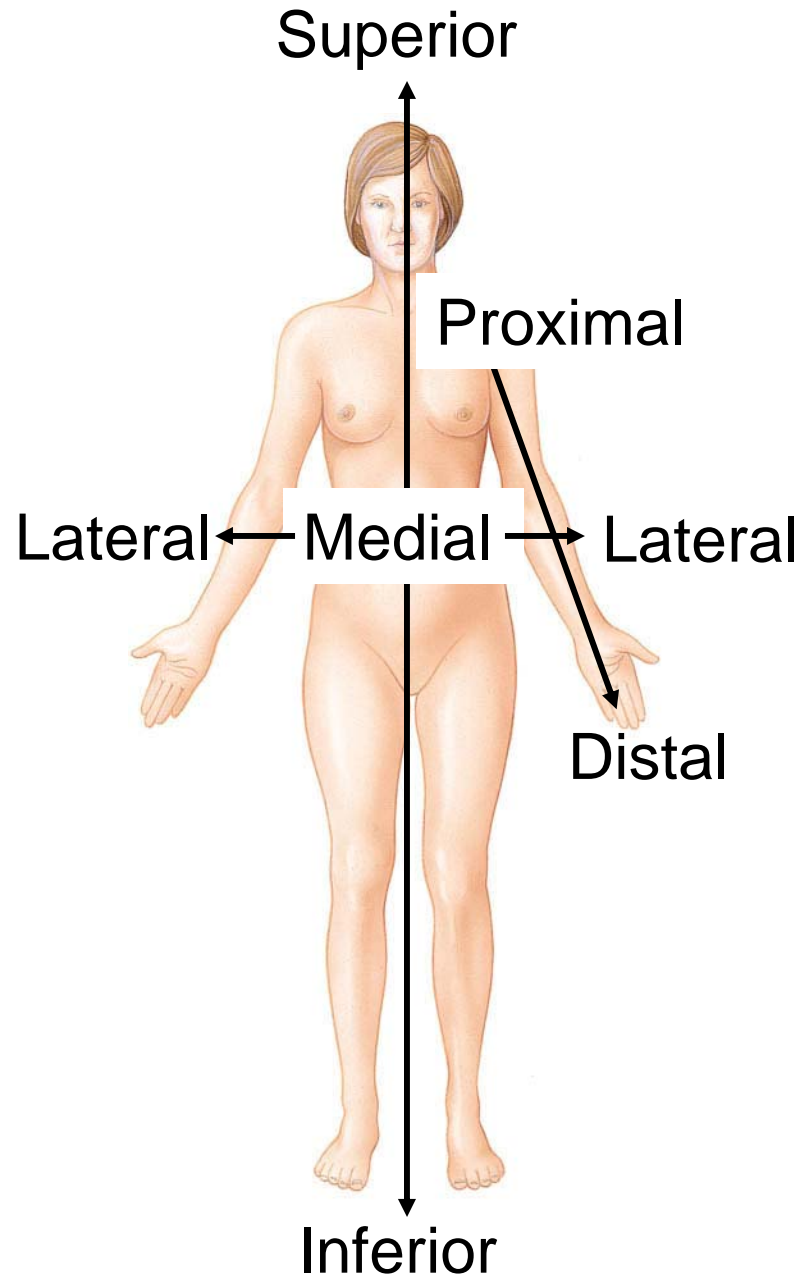
Anatomical Position: Reference for Anatomy

Anterior View

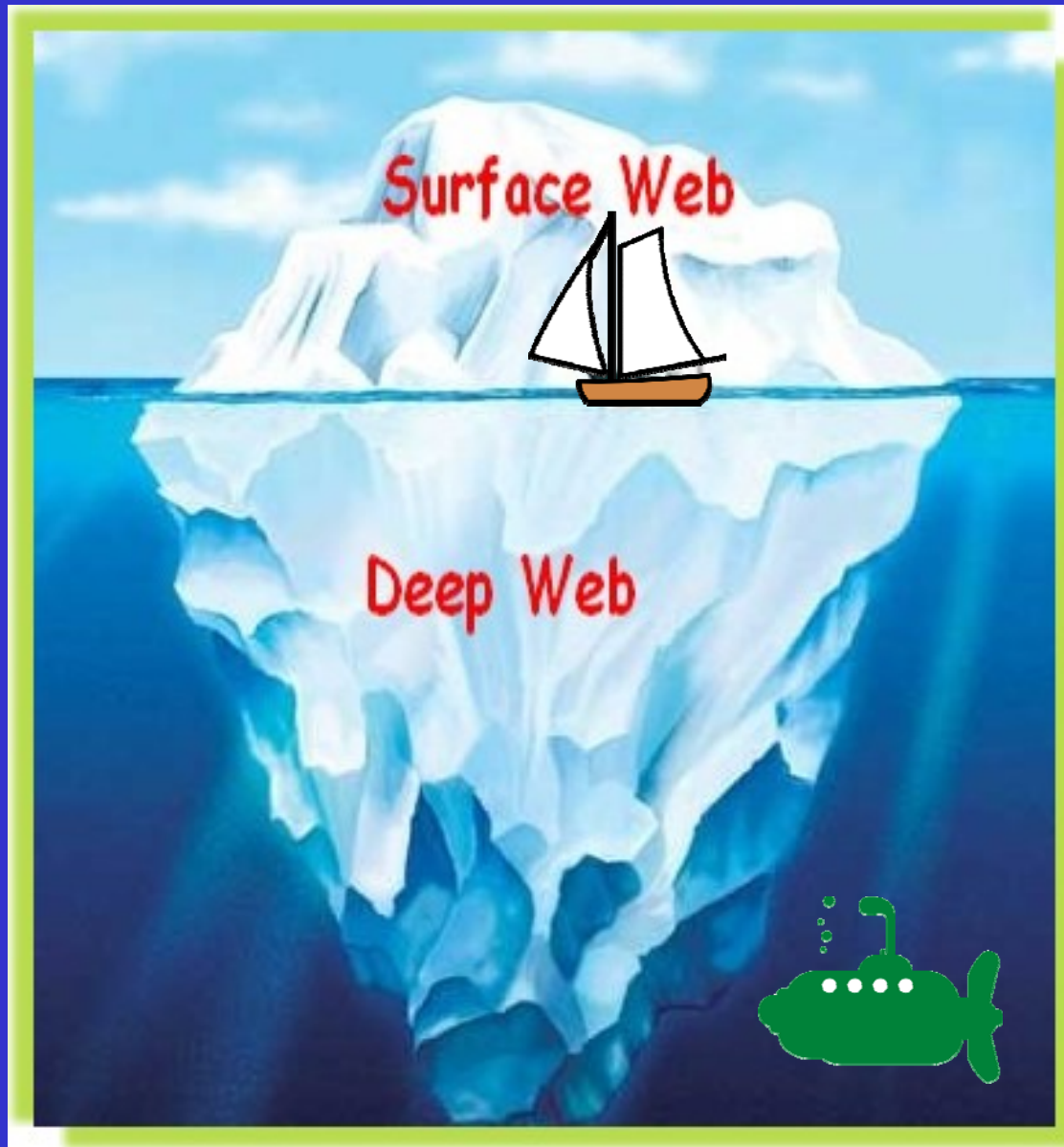


Posterior View

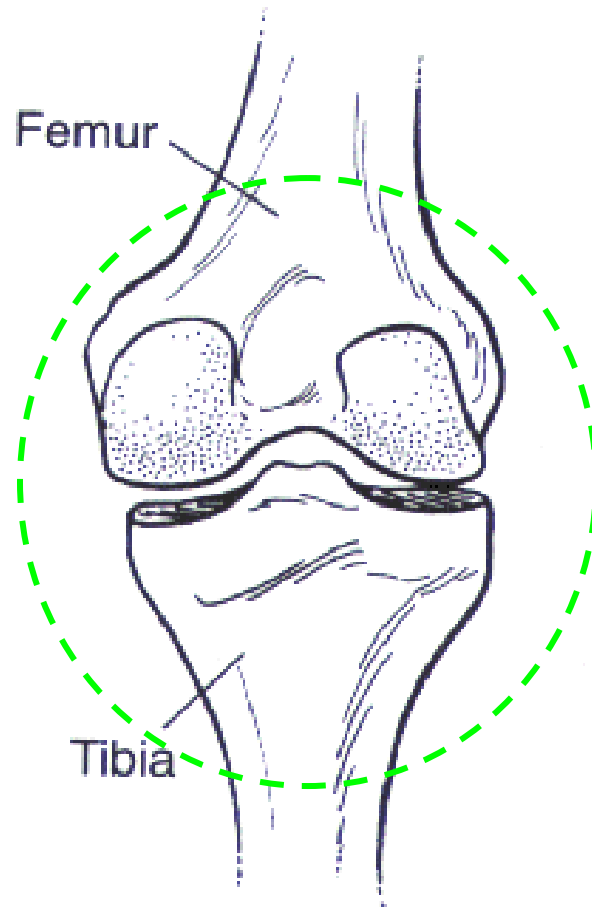




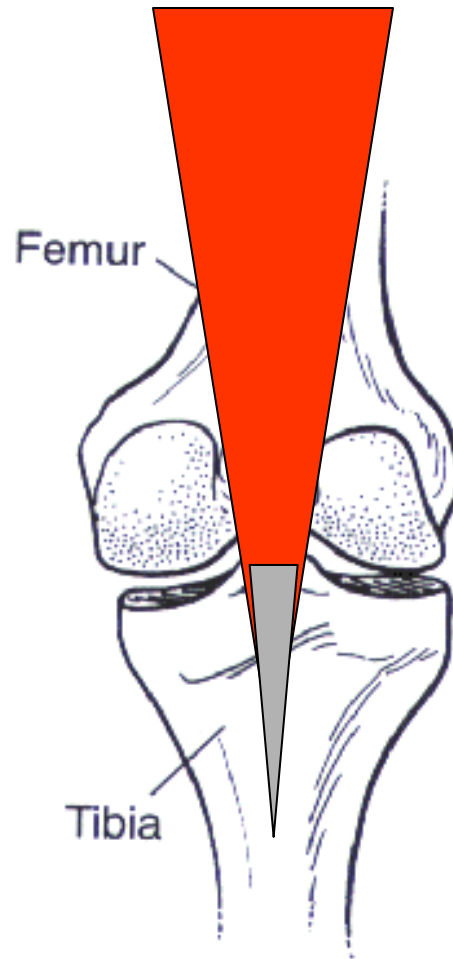
Superficial vs. Deep?



Joint. Simply a Place Where 2 Bones Meet!



Muscles: Cross Joints by Way of Tendons

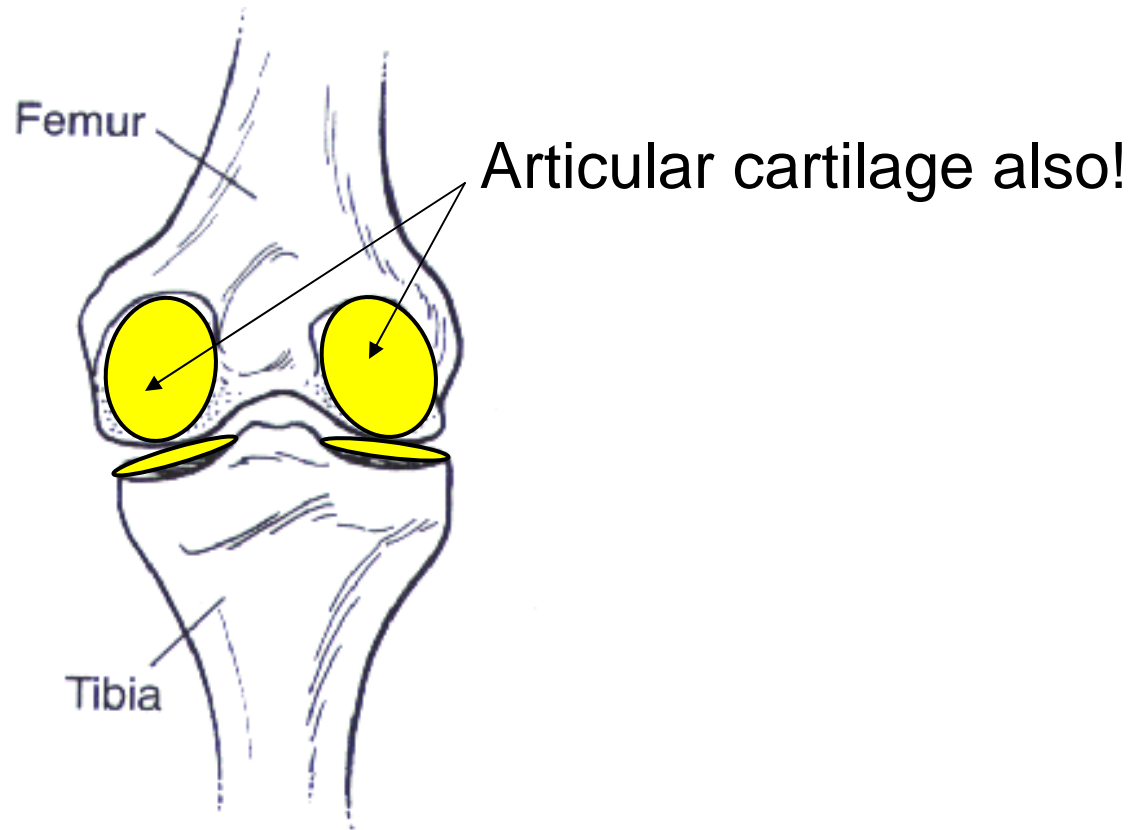


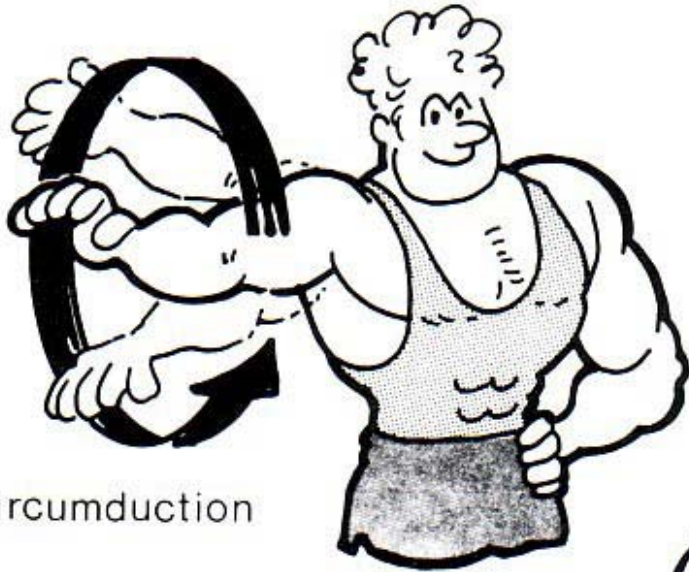
Tendons: Staple Muscles to Bones!

Ligaments: Connect Bone to Bone!

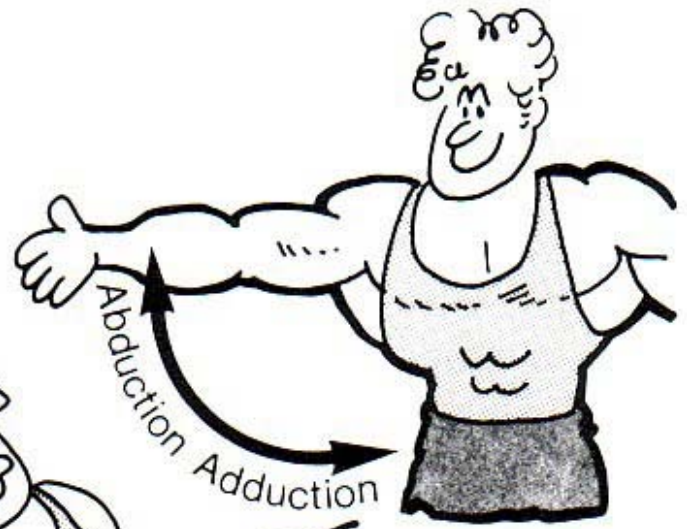


Cartilage: Cushion Between Bones!

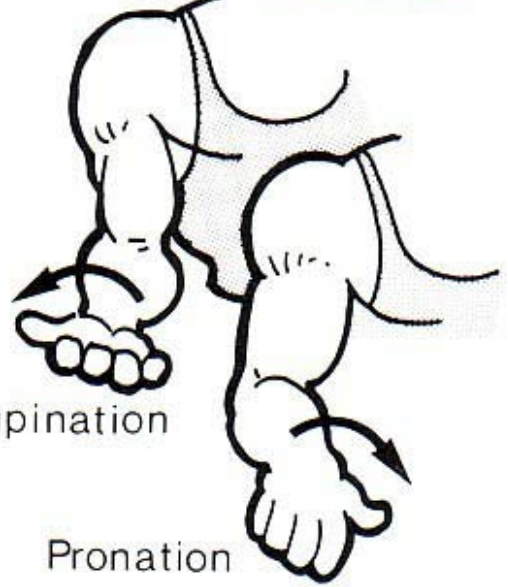




Circumduction



Rotation
(about long axis)



Supination

Pronation

Mystery Structure-Function Day

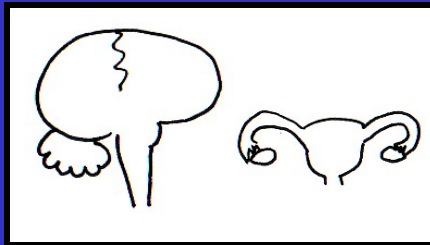
1. Your group should have 4-6 people at your 1st station.
2. Answer as many questions as possible with your group.
3. Collaborate, collaborate, collaborate!
4. Written references/resources are fine, but not instructors.
5. Please, no photography, images or copies of any kind.



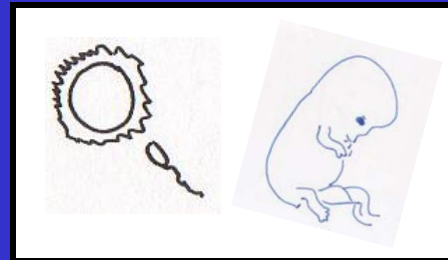
...Above all have fun!

Group Rotations

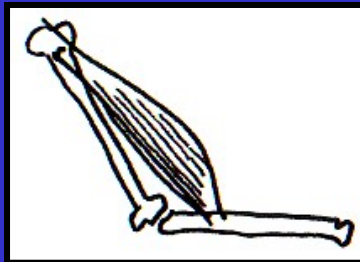
1. Neuroendocrine



2. Development



5. Muscular & Skeletal



4. GI/Digestive



3. Cardiorespiratory

