

BI 121 Lab 5 Blood Chemistry



... Heck yeah! Lifetime, personal data again!

I. Attendance

II. Safety in Handling Live Tissue Specimens

- A. Thanks for no food, drink, or gum in lab today!
- B. Wash hands before; 70% ethanol; wash hands after
- C. Handle only your own specimen
- D. Partition & dispose of specimens

III. What's Blood Typing ?

- A. ABo System?
- B. Rh or Rhesus factor?
- C. Why important?

IV. Blood Glucose ?

- A. What is it?
- B. How measured? Blood, urine + GTT
- C. Why important?

PREPARATION



WASH & DRY



ALCOHOL



SAMPLE+TESTS



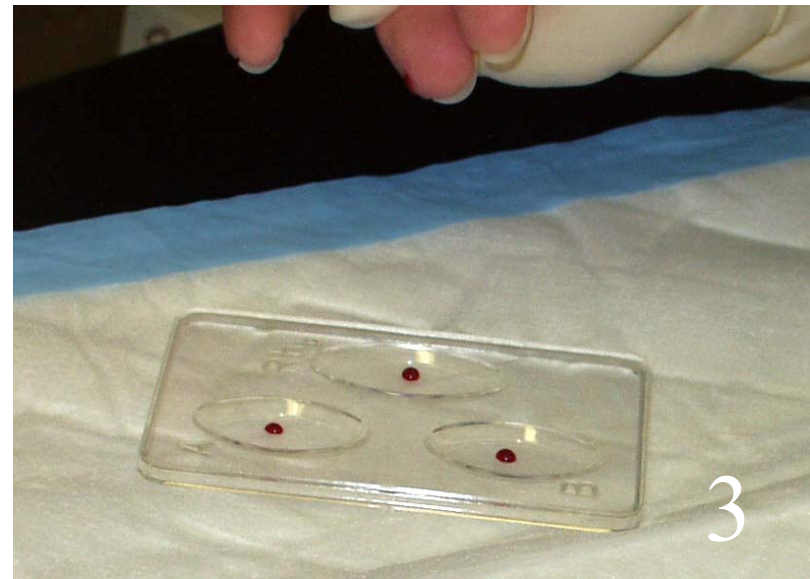
1

OBTAIN μ SAMPLE



2

BLOOD GLUCOSE



3

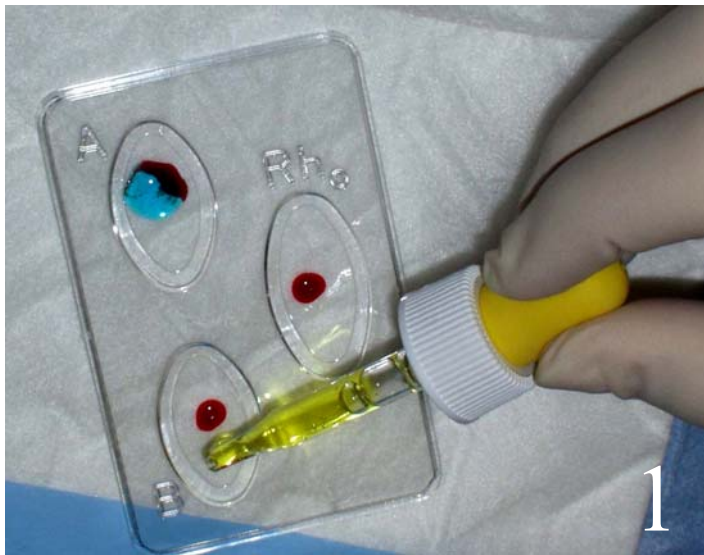
BLOOD TYPING

BLOOD GLUCOSE

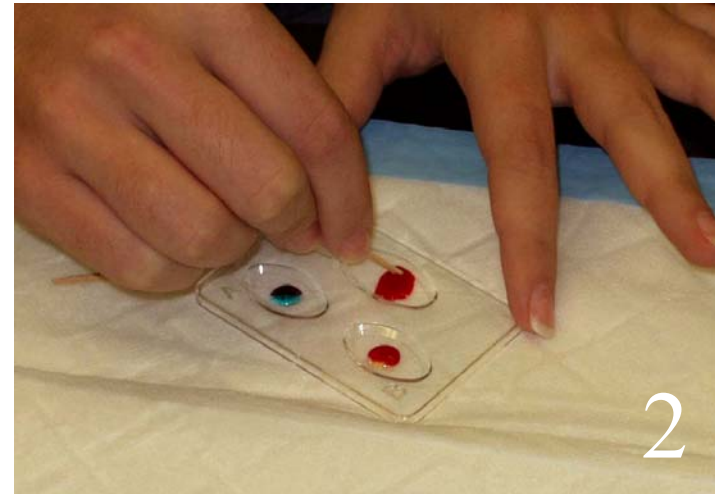


READ & RECORD!!

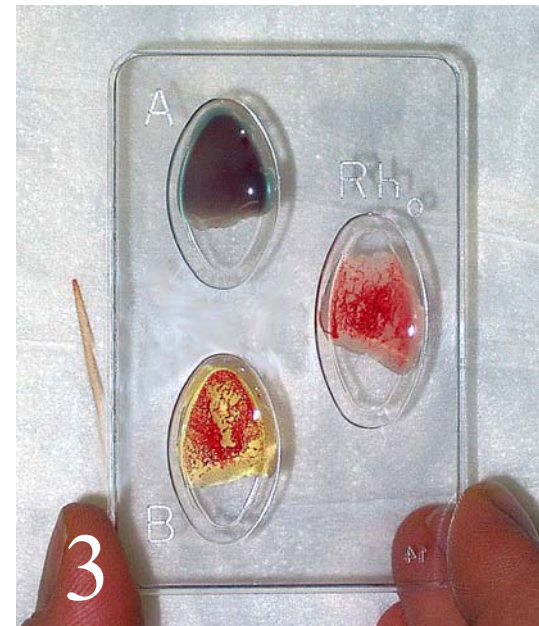
BLOOD TYPING



ADD ANTISERA



MIX W/TOOTHPICKS



READ & RECORD!!

CLEAN-UP!



FOLD DIAPER



BLOOD PRODUCTS



REWASH!!

Q about Lab?