

Glazing Wall Key

University of Oregon's Baker Lighting Lab
Department of Architecture
baker@uoregon.edu - <http://baker.uoregon.edu>

Located on the 4th floor balcony near the Material Resource Center, the Baker Glazing Wall is comprised of samples of architectural glazing donated by Pilkington - one of the world's largest manufacturers of glass and glazing products for building, automotive and related technical markets. The Glazing Wall serves as resource to understand the aesthetic and spectral qualities of glass such as transmittance, color, solar control, and optics. Additional glazing types and performance specifications may be found at <http://www.pilkington.com>

The Glazing Wall frames were fabricated by John Boosinger under the direction of the Baker Lighting Lab.



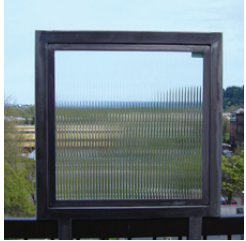
1. Pilkington Eclipse Advantage™ Blue-Green



(Pyrolytic Reflective Low-E Glass)
Eclipse- blue green glass with silver reflective coating

Thickness: 1/4in (6mm)
Transmittance: 56%
UV Transmittance: 16%
Solar Heat Gain Coefficient: .45
Shading Coefficient: .53

2. Pilkington Texture Glass™ Reeded™



Thickness: 1/4 in- 5/32 in (4mm – 6mm)
Transmittance: NA
UV Transmittance: NA
Solar Heat Gain Coefficient: NA
Shading Coefficient: NA

3. Pilkington Solar E™



(Solar Control Pyrolytic Low-E Glass)

Thickness: 1/4 in (6 mm)
Transmittance: 60%
UV Transmittance: 41%
Solar Heat Gain Coefficient: 0.51
Shading Coefficient: 0.59

4. Pilkington Energy Advantage™



(Coated Low-E Glass)

Thickness: 1/4 in (6 mm)
Transmittance: 82%
UV Transmittance: 49%
Solar Heat Gain Coefficient: 0.70
Shading Coefficient: 0.80

5. Pilkington Arctic Blue High-Performance Tint

(Uncoated Tinted Glass)



Thickness: ¼ in (6 mm)
Transmittance: 55%
UV Transittance: 22%
Solar Heat Gain Coefficient: 0.52
Shading Coefficient: 0.61

6. Pilkington Optiwhite™

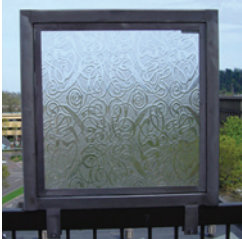
(Low Iron Glass)



Thickness: ¼ in (6 mm)
Transmittance: 91%
UV Transittance: 83%
Solar Heat Gain Coefficient: 0.90
Shading Coefficient: 1.04

7. Pilkington Texture Glass™ Everglade™

Everglade textured glass



Thickness: ¼ in- 5/32 in (4mm – 6mm)
Transmittance: NA
UV Transittance: NA
Solar Heat Gain Coefficient: NA
Shading Coefficient: NA

8. Pilkington Optifloat Clear

(Uncoated Glass)



Thickness: ¼ in (6 mm)
Transmittance: 88%
UV Transittance: 62%
Solar Heat Gain Coefficient: 0.81
Shading Coefficient: 0.94

9. Pilkington Optifloat Blue-Green Tint

(Uncoated Float Glass)



Thickness: ¼ in (6 mm)
Transmittance: 75%
UV Transittance: 31%
Solar Heat Gain Coefficient: 0.62
Shading Coefficient: 0.72

10. Pilkington Eclipse Advantage™ EverGreen

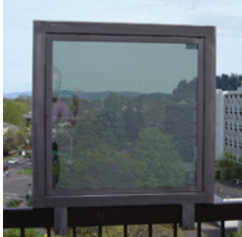
(Pyrolytic Reflective Low-E Glass)



Thickness: ¼ in (6 mm)
Transmittance: 49%
UV Transittance: 7%
Solar Heat Gain Coefficient: 0.37
Shading Coefficient: 0.43

11. Pilkington Eclipse Advantage™ Arctic Blue

(Pyrolytic Reflective Low-E Glass)
Eclipse- arctic blue glass with silver reflective coating



Thickness: ¼ in (6 mm)
Transmittance: 41%
UV Transittance: 11%
Solar Heat Gain Coefficient: 0.37
Shading Coefficient: 0.44

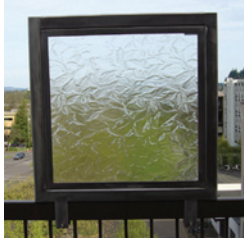
12. Pilkington Texture Glass™ Flemish™



Flemish textured glass

Thickness: ¼ in- 5/32 in (4mm – 6mm)
Transmittance: NA
UV Transittance: NA
Solar Heat Gain Coefficient: NA
Shading Coefficient: NA

13. Pilkington Texture Glass™ Autumn™



Autumn textured glass

Thickness: ¼ in- 5/32 in (4mm – 6mm)
Transmittance: NA
UV Transittance: NA
Solar Heat Gain Coefficient: NA
Shading Coefficient: NA

14. Pilkington Activ™ Self-Cleaning Glass



(Coated Glass)

Thickness: ¼ in (6 mm)
Transmittance: 83%
UV Transittance: 43%
Solar Heat Gain Coefficient: 0.78
Shading Coefficient: 0.91

15. Pilkington SuperGrey High Performance Tint



(Uncoated Tinted Glass)

Thickness: ¼ in (6 mm)
Transmittance: 9%
UV Transittance: 1%
Solar Heat Gain Coefficient: 0.35
Shading Coefficient: 0.41

16. Pilkington EverGreen High-Performance Tint



(Uncoated Tinted Glass)

Thickness: ¼ in (6 mm)
Transmittance: 66%
UV Transittance: 14%
Solar Heat Gain Coefficient: 0.51
Shading Coefficient: 0.60

17. Pilkington Pyrostop™

(Fire Protection Glass)

Thickness: 1.06 in (27 mm)
Transmittance: 86%
UV Transittance: NA: Fire rated for 60 minutes
Solar Heat Gain Coefficient: NA
Shading Coefficient: NA
