



SOLMETRIC

Solar Test and Measurement Equipment

Solmetric SunEye™ User's Guide

Version 2.7

SOLMETRIC SOLAR TEST AND MEASUREMENT EQUIPMENT

Solmetric SunEye™ User's Guide

© Solmetric Corporation
www.solmetric.com
Phone 877-263-5026 • Fax 877-263-5026
Document revision date: 9/11/2008

Limited Hardware and Software Warranty

This Solmetric software and the Solmetric SunEye™ hardware (“Hardware”) are warranted against defects in materials and workmanship for a period of one year when purchased in the United States or two years when purchased outside the United States. During the warranty period, Solmetric will, at its option, either repair or replace products which prove to be defective. The warranty period begins on the date of shipment.

For warranty service or repair, this product must be returned to the appropriate authorized repair center listed in the Solmetric SunEye User’s Guide. No returns will be accepted without an RMA (obtain from Technical Support). For products returned for warranty service, the Buyer shall pay for shipping charges to send the product to the repair center, and the repair center shall pay for shipping charges to return the product to the Buyer. However, the Buyer shall pay all shipping charges, duties, and taxes for products returned to the repair center from a country outside of the United States.

The forgoing warranty shall not apply to defects resulting from improper or inadequate maintenance by the Buyer, unauthorized modification or misuse, or operation outside of the environmental specifications for the product. Unauthorized modification includes disassembly of the Solmetric SunEye hardware, removal of any part of the Solmetric SunEye hardware, modification to the operating system or operating system settings of the Solmetric SunEye, or the installation of software on the device other than Solmetric SunEye software.

The design and construction of any system or building by the Buyer is the sole responsibility of the Buyer. Solmetric does not warrant the Buyer’s system, products, or malfunction of the Buyer’s system or products. In addition Solmetric does not warrant any damage that occurs as a result of the Buyer’s system, product, or the Buyer’s use of Solmetric products.

To the extent permitted by applicable law, THE FOREGOING LIMITED WARRANTY IS IN LIEU OF ALL OTHER WARRANTIES OR CONDITIONS, EXPRESS OR IMPLIED, AND WE DISCLAIM ANY AND ALL IMPLIED WARRANTIES OR CONDITIONS, INCLUDING ANY IMPLIED WARRANTY OF TITLE, NONINFRINGEMENT, MERCHANTABILITY OR FITNESS FOR A PARTICULAR PURPOSE, regardless of whether we know or had reason to know

of your particular needs. No employee, agent, dealer or distributor of ours is authorized to modify this limited warranty, nor to make any additional warranties.

SOME STATES OR COUNTRIES DO NOT ALLOW THE EXCLUSION OF IMPLIED WARRANTIES, SO THE ABOVE EXCLUSION MAY NOT APPLY TO YOU. THIS WARRANTY GIVES YOU SPECIFIC LEGAL RIGHTS, AND YOU MAY ALSO HAVE OTHER RIGHTS WHICH VARY FROM STATE TO STATE OR COUNTRY TO COUNTRY.

Limited Remedy

Our entire liability and your exclusive remedy shall be the replacement or repair of any Solmetric hardware or software not meeting our Limited Hardware And Software Warranty which is returned to an authorized repair center with a copy of your receipt.

IN NO EVENT WILL WE BE LIABLE TO YOU FOR ANY DAMAGES, INCLUDING ANY LOST PROFITS, LOST SAVINGS, OR OTHER INCIDENTAL OR CONSEQUENTIAL DAMAGES ARISING FROM THE USE OF OR THE INABILITY TO USE THE SOLMETRIC SOFTWARE OR HARDWARE (EVEN IF WE OR AN AUTHORIZED DEALER OR DISTRIBUTOR HAS BEEN ADVISED OF THE POSSIBILITY OF THESE DAMAGES), OR FOR ANY CLAIM BY ANY OTHER PARTY.

SOME STATES OR COUNTRIES DO NOT ALLOW THE LIMITATION OR EXCLUSION OF LIABILITY FOR INCIDENTAL OR CONSEQUENTIAL DAMAGES, SO THE ABOVE LIMITATION MAY NOT APPLY TO YOU.

PLEASE CONTACT TECHNICAL SUPPORT BEFORE RETURNING ANY PRODUCT.

Table of Contents

LIMITED HARDWARE AND SOFTWARE WARRANTY	II
LIMITED REMEDY	III
UNDERSTANDING THE SOLMETRIC SUNEYE™	1
<hr/>	
SOLAR PANEL DESIGN AND INSTALLATION	1
PASSIVE SOLAR HOUSE DESIGN AND GREEN ARCHITECTURE	1
HOME AND PROPERTY INSPECTION	2
GETTING FAMILIAR WITH THE SOLMETRIC SUNEYE™	3
<hr/>	
THE SOLMETRIC SUNEYE™	4
INSTALLING THE SOLMETRIC SUNEYE™ DESKTOP COMPANION SOFTWARE	5
MINIMUM SYSTEM REQUIREMENTS:	5
INSTALLATION PROCEDURE	5
SYSTEM CONTROLS AND SETTINGS	7
POWER BUTTON	7
TOUCH SCREEN	7
FIVE-WAY NAVIGATION BUTTON	8
NECK STRAP	8
COVER	9
THE SUNEYE™ GPS	10
GPS CONTROLS	10
LED DISPLAY	10
POWER SWITCH	11
SETTING UP THE SUNEYE™ GPS	11
CHARGING THE BATTERY	11
CREATING A BLUETOOTH PARTNERSHIP	12
USING THE SOLMETRIC SUNEYE™	13
<hr/>	
CHARGING THE BATTERY	13
POWER-UP THE SOLMETRIC SUNEYE™	14

SET CORRECT DATE AND TIME	14
CREATE A SESSION	15
CAPTURE A SKYLINE	20
VIEW THE SKYLINE MEASUREMENT DATA	24
ANNUAL SUNPATHS VIEW	25
MONTHLY SOLAR ACCESS VIEW	26
FULL FISHEYE VIEW	27
SESSION SOLAR ACCESS AVERAGES	27
TOOLS	27
EDIT TOOL	28
ZOOM AND PAN TOOLS	31
MANAGING SESSION AND SKYLINE FILES	33
BROWSING FOR DATA	33
UTILITY FEATURES	34
ALIGN TOUCH SCREEN	34
GPS SETUP	35
SET DATE AND TIME	35
LICENSES	35
SELECT LOCALE	36
ABOUT SOLMETRIC SUNEYE™	36
LICENSE FEATURES	36
<hr/>	
USING THE SOLMETRIC SUNEYE™ DESKTOP COMPANION SOFTWARE	38
<hr/>	
TRANSFERRING AND STORING YOUR DATA	39
VIEWING AND ANALYZING YOUR DATA	39
BROWSING SESSION DATA	39
MANAGING LICENSES	40
EXPORTING AND GENERATING REPORTS	41
PRINT THE REPORT	43
SAVE IMAGES FROM THE REPORT	43
CONVERT REPORT TO OTHER FORMATS	43
EMAILING OR SHARING THE REPORT ELECTRONICALLY	44
EXPORTED DATA FILES	44
<hr/>	
SOLAR ACCESS AND INTERPRETATION OF DATA	51
<hr/>	
SOLAR IRRADIANCE	51
SHADING	53
WEATHER, AIR QUALITY AND CLOUDS	53
SURFACE ORIENTATION	54
NUMERICAL CALCULATIONS	55
<hr/>	
MAINTENANCE AND TROUBLESHOOTING	56
<hr/>	

SOLMETRIC SUNEYE™ USER'S GUIDE

UPGRADING OR DOWNGRADING SOFTWARE	57
RESET	58
CONTACT INFORMATION FOR SERVICE, TECHNICAL ASSISTANCE, AND SALES	60

Understanding the Solmetric SunEye™

The Solmetric SunEye™ (patent pending) provides complete solar access and shade analysis in an integrated powerful hand-held tool for the following uses:

- Solar panel system design and installation
- Passive solar house design and green architecture
- Landscape design and landscape architecture
- Home and property inspection

Solar Panel Design and Installation

The Solmetric SunEye™ is an invaluable tool for the professional solar installer, saving time and money and helping to design the highest performance systems. Home and business owners who care about the performance and payback of their systems hire installers that use the Solmetric SunEye™. It's equally useful for PV, passive hot water, roof mount or ground-mount systems. The Solmetric SunEye™ can help:

- Optimize new systems for maximum production.
- Analyze existing installations to solve problems of under production.
- Identify specific shade-causing obstructions and know instantly how much additional energy would be produced if the obstructions were removed.

Passive Solar House Design and Green Architecture

The Solmetric SunEye™ is the right tool for the job when you need accurate site-specific solar access data for a new home or renovation. Optimize the orientation of a structure by identifying where and when the sun will shine. The Solmetric

SunEye™ helps you answer many different questions. For example, “Will there be enough sun in the winter for passive heating of the house given the site-specific shading?”, or “How will removing the large oak tree on the south-west corner effect the warming and cooling of the building?” Furthermore, by collecting data inside an existing structure, you can identify the amount of direct sunlight that will enter a window or skylight or identify the perfect location for a new window or skylight.

Home and Property Inspection

The Solmetric SunEye™ gives professional home and property inspectors a way to provide their clients with important information about the solar access of a property. This information can be useful for:

- Identifying potential sites for solar panels, gardens, or new windows.
- Determining the amount of passive solar heating or cooling a particular building will experience.
- Determining how much direct sunlight will enter a particular window or skylight.

Getting Familiar with the Solmetric SunEye™

The Solmetric SunEye™ (patent pending) includes features that make it easy and efficient to use.

- Point-and-click data gathering
- Instant measurement results:
 - Plots sunpaths for the latitude and longitude of the site
 - Determines annual, seasonal, monthly, and quarter-hourly shading percentages
 - Automatically adjusts data for magnetic declination for a specific location
- Store more than 50 site readings on the hand-held unit
- Transfer data to desktop PC for later review
- Desktop Companion software for desktop PC automatically generates reports and exported data files
- Hand-held, all-in-one tool with Integrated fish-eye camera and processing software
- Easy-to-use finger-driven touch screen interface

The Solmetric SunEye™



1	Fisheye lens and digital camera	7	Device/USB and charge port
2	Compass	8	5-way navigation button
3	Bubble level	9	Soft reset pin-hole
4	Power on/off button	10	Neck strap attachment points
5	Touch screen and LCD	11	Tripod mount
6	Protective cover		

Installing the Solmetric SunEye™ Desktop Companion Software

Before you start using your Solmetric SunEye™ it is recommended that you install the Solmetric SunEye™ Desktop Companion Software. Although you won't have any data to analyze on the desktop yet, this will allow you to view the User's Guide.

Minimum system requirements:

Windows Vista, Windows XP SP2 (Professional, Home, or Media Center), Windows 2000 SP4, 700 MHz, 256 MB RAM, 20 MB hard drive space, MS Internet Explorer. Systems that do not meet these requirements may not operate correctly.

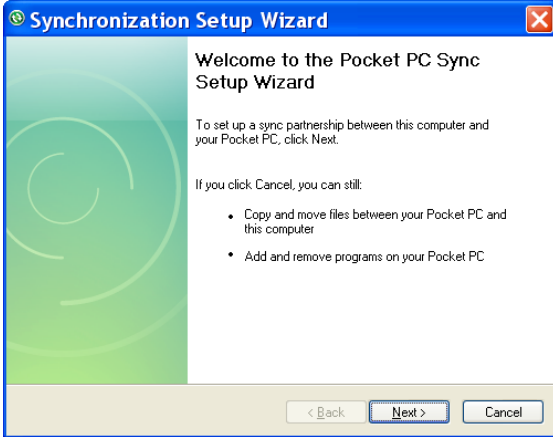
Installation Procedure

1. Insert the CD-ROM that came with the Solmetric SunEye™ into the CD drive on your Windows desktop computer.
2. If the welcome screen does not automatically open, click **Start** then **My Computer** and double-click on the CD drive. Then double-click on setup.exe.
3. Follow the instructions in the welcome screen to install the Solmetric SunEye™ Desktop Companion Software and update the software on the Solmetric SunEye™ device. If not already installed, the installation will install Microsoft ActiveSync (for Windows XP and Windows 2000) or Windows Mobile Device Center (for Windows Vista) which is needed to communicate with the Solmetric SunEye™ device.
4. You can view the Users Guide from the welcome screen by clicking on the "View Solmetric SunEye™ Users Guide" link in the welcome screen. You will need a PDF reader to view the Users Guide. You can install Adobe Reader by clicking on the "Install Adobe Reader" link.

If at any time the Solmetric welcome screen is not showing, click on the Solmetric installer icon in the task bar at the bottom of your screen. If the welcome screen is accidentally closed, click on setup.exe from the CD-ROM as described in step 2 or re-insert the CD-ROM to automatically launch.

5. During the installation, the device connectivity software will try to connect to the Solmetric SunEye™ device.

For Windows 2000 and Windows XP, and Solmetric SunEye™ devices labeled with “SunEye-100N v2”, ActiveSync will automatically start the “Synchronization Setup Wizard”.



Select “Cancel” to exit this dialog.

6. You can now launch the Solmetric SunEye™ Desktop Companion from the Solmetric SunEye™ icon on your desktop or from the start button:  > **All Programs > Solmetric SunEye > Solmetric SunEye**

If this is the first time launching the Solmetric SunEye™ Desktop Companion, or there has never been data transferred from the Solmetric SunEye hand-held device, then there is nothing that can be done on the desktop at this point other than view the User’s Guide. The screen you will see looks like this:



7. You can view the User’s Guide by selecting **Help > Solmetric SunEye User’s Guide...**

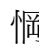
NOTE *You must have Adobe Reader® installed in order to view the User's Guide. Adobe Reader can be installed from the CD-ROM welcome screen (setup.htm). Simply click on "click here to install Adobe Reader".*

8. You can exit the application by selecting **File > Exit**.

System Controls and Settings

Power Button

- Pressing the power button switches on or off the Solmetric SunEye™ device.
- Pressing the power button and holding it for 4 seconds when the device is on, switches off the backlight without powering down.

 Pressing and holding the power button again for 4 seconds switches the backlight back on.

NOTE *For proper operation it is important to maintain the charge of the battery even when not in use. Prolonged storage will result in the slow discharge of the battery. When the SunEye™ is not in use, it should be connected to AC power or to a computer with the Device/USB cable. It is not harmful to the device to be continuously connected to AC power or to a computer*

Touch Screen

The touch screen is the main interface that you will use to interact with the Solmetric SunEye™. Although a stylus has been included, it is not necessary for general operation. The user interface has been carefully designed to allow easy control using your finger alone.

- Touching your finger tip to the screen is similar to moving a mouse cursor or other input device on a personal computer screen.
- Tapping your finger on the screen is similar to clicking a mouse.

NOTE *You will find that your fingernail works better than the fingertip on the touch screen.*

Five-Way Navigation Button



The five-way navigation button can also provide input to many of the navigation features displayed on the Solmetric SunEye™ screen. For example, you can use the five-way navigation button to scroll through menus:

- Pressing the center button brings up the main menu.
- Pressing the left, right, up, or down button changes the selected menu item. The menu selection is highlighted in blue.
- Pressing the center button again selects the highlighted menu option. Small arrows show possible directions that can be pressed on the button to move to the next menu.

There are other specific uses of the 5-way navigation button that are described in the following sections and chapters.

NOTE *The Solmetric SunEye™ uses an HP iPAQ as the processor and user interface. However, this iPAQ may not be removed from the device, and there is no access to the operating system of the iPAQ. Attempts to remove the HP iPAQ, modify the operating system settings, or install software other than the Solmetric SunEye™ software will void the warranty.*

Neck Strap

Your Solmetric SunEye™ came with a neck strap. You may attach the strap as follows:

1. The ends of the strap webbing are run twice through buckles on each end of the strap. Open one of the loops by removing the strap webbing from the buckle so that the webbing only passes once through the buckle.
2. Insert the webbing through one of the neck strap attachment points on the base of the Solmetric SunEye™.
3. Pass the webbing back through the buckle.
4. Repeat for the other end of the strap.
5. There is a small elastic loop on the strap to place the SunEye™ GPS.

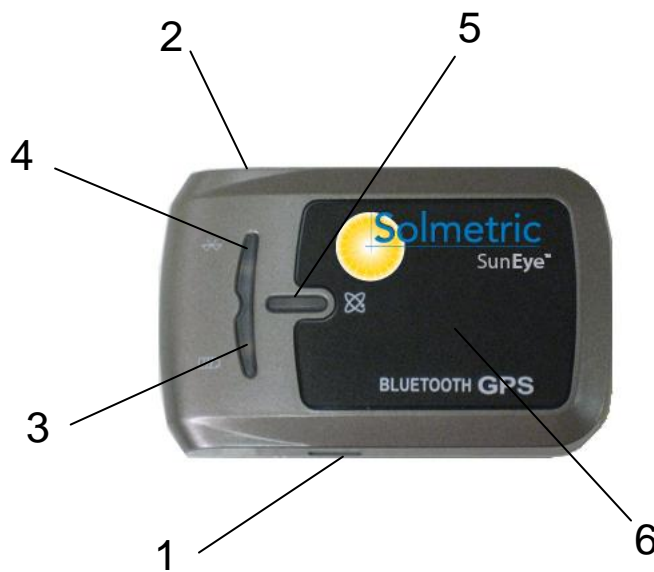
Cover

Your Solmetric SunEye™ has a protective cover that folds open when in use. When you are capturing data, open the cover entirely so that the compass is level. The cover can also be used as a visor to shade the sun from the LCD display and improve visibility.

The SunEye™ GPS

The SunEye™ GPS can acquire your current location when creating or modifying a session and when acquiring skylines.

GPS Controls



1	Power jack (mini USB)	4	Bluetooth status LED (blue)
2	Power switch	5	GPS status LED (orange)
3	Battery status LED (red/green)	6	Internal antenna

LED Display

The Solmetric GPS has three LED lights, one for the Bluetooth status, the second for the battery status, and the third for the GPS status.

	Color	Status	Function

Bluetooth Status LED (4)	Blue	Always on	Bluetooth not connected
		Slowly blinking	Bluetooth is in sleep mode for low power consumption
		Quickly blinking	Bluetooth is connected
Battery Status LED (3)	Red	Blinking	Battery is low, charge the GPS
	Green	Always on	Battery is charging
	Green	Blinking	Battery is fully charged
GPS Status LED (5)	Orange	Always on	Acquiring satellites, GPS position not fixed
		Blinking	GPS position is fixed

Power Switch

- Sliding the power switch (2) toward the center will turn the GPS on.



Setting up the SunEye™ GPS

Charging the Battery

- Before using your SunEye™ GPS, you will need to fully charge the battery. Plug in the GPS power cable and connect it to the GPS power jack, this will begin to charge the battery.
- When the battery is charging, the battery status LED will be solid green. When the battery is fully charged, the battery status LED will blink green. When fully charged, the GPS will operate approximately 24 hours.
- When the battery status LED is red, the battery is critically low, and the GPS will need to be charged again. Low battery power for the GPS or the Solmetric SunEye™ may affect signal reception.

Creating a Bluetooth Partnership

The Solmetric SunEye™ communicates with the GPS using Bluetooth. Before using your SunEye™ GPS, you will need to create a Bluetooth partnership between the Solmetric SunEye™ and the GPS.

- Turn on the Solmetric SunEye™ and the GPS. Select  then  to access the utility features. Select **GPS Setup...**, from the GPS Setup dialog, select **New GPS**. The Solmetric SunEye™ will search for a SunEye™ GPS, this may take a while since it is locating all Bluetooth devices in the area. A partnership will be created when the SunEye™ GPS is found.
- If you want to use a different SunEye™ GPS with your Solmetric SunEye™, you will need to create a new Bluetooth partnership with the new GPS.
- See the section **Create a Session** on page 15 for using the GPS to acquire the session location. See the section GPS Setup on page 35 for automatically acquiring the location for each new skyline.

NOTE *If when trying to create a Bluetooth partnership, a SunEye™ GPS was found with an invalid ID, you may need to upgrade the SunEye™ software to validate the GPS. Recent software is available at: www.solmetric.com/support.*

GPS Usage



For best performance:

- Make sure the GPS has been powered on for at least 40 seconds before taking your first measurement
- In general any GPS receiver performs best in open space where it can see open sky.

Using the Solmetric SunEye™

This chapter contains step-by-step instructions for the basic use of the Solmetric SunEye™, including the collection of solar access data.

Charging the battery

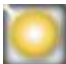
- The battery in the Solmetric SunEye™ is not removable. It may be recharged by attaching the device to a PC via the Device/USB cable or by using the AC wall-plug or the car charger. All cables are connected to the Solmetric SunEye™ via the Device/USB port on the right side of the device.
- If the battery is completely discharged, you must use the AC charger if you want to operate the device while it is charging. The Device/USB cable and the car charger do not supply enough current to both charge a completely discharged battery and operate the device.
- Charging the battery can take up to 4 hours. Once the battery has been charged, the device will operate without the external power connection for approximately 3 hours of continuous use.
- When the battery is charging, the orange LED to the left of the screen will blink. When the battery is fully charged the LED will be solid on. When the AC cable or Device/USB cable is disconnected, the LED will be off.
- To see the current battery level of your Solmetric SunEye™, select the menu icon , then the utility icon , and then select **About Solmetric SunEye™**.
- For proper operation, it is important to maintain the charge of the battery, even when not in use. Storage in the off state without the AC power or Device/USB cable attached will result in the slow discharge of the battery. In this off state, the battery will last approximately 9 days. Therefore, when the

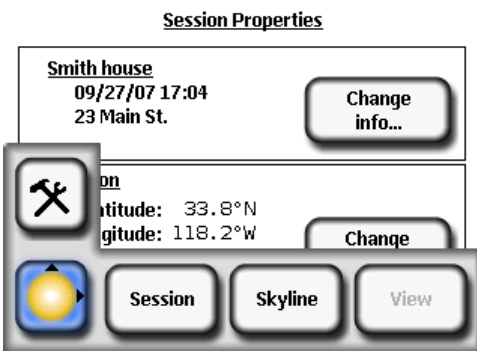
SunEye™ is not in use, it should be connected to AC power or to a computer that is on via the Device/USB cable. It is not harmful to the device to be continuously connected to AC power or to a computer. It is also not harmful to the device or to your data for the battery to fully discharge, however, if this happens, you may be forced to go through a series of steps including a touchscreen alignment and tutorial.


Power-Up the Solmetric SunEye™

1. If the battery has not been fully charged as described above, connect the power cable to the Device/USB port, located on the right side of the Solmetric SunEye™.
2. Press the **Power** button.

Set correct Date and Time

3. Select the menu icon  at the bottom-left of the screen. You will see the Solmetric SunEye™ menu.
 - Alternatively, press the center navigation button to bring-up the menu.



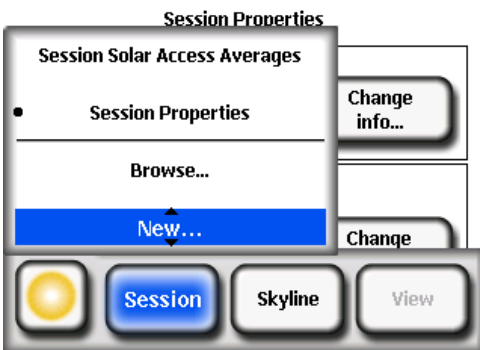
4. Select  to access the utility features
5. Select **Set Date and Time...**
6. Enter correct date, time, and time zone.

Create a Session

A session is like a site visit. You would generally create a new session for each new client. Each session will generally consist of multiple skyline data sets. The Session menu selections are as follows:

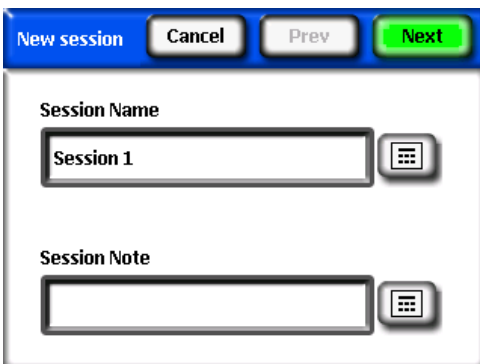
- **Properties** – shows information about the current session.
- **Browse** – allows you to view and select a previously created session.
- **New** – creates a new session.


1. Select the menu icon  then **Session** to see the session menu.



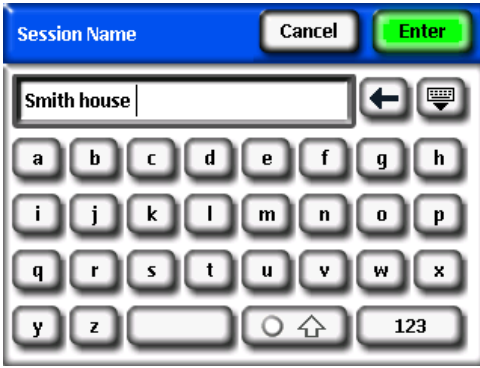
2. Select **New**.


You will see the **New session** dialog box.

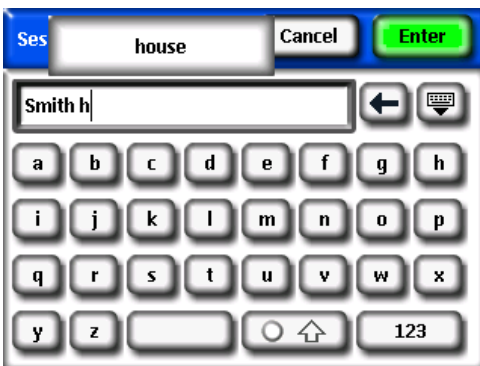


3. You can accept the default session name (for example, Session 1), or you can select the keyboard icon  next to the **Session Name** text box on the display and enter a different name.

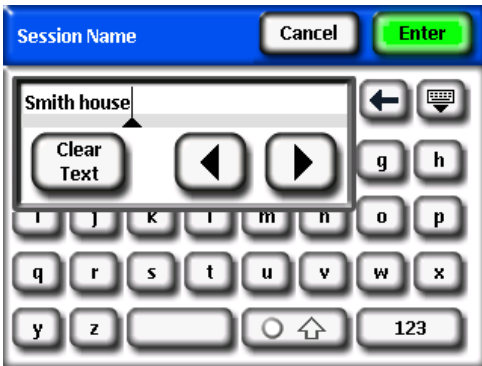
- If you pressed the keyboard icon, next select the characters from the keyboard to name the session. Then select **Enter**. For example, if you were creating a session for Roger Smith's house, you could enter the name to appear as shown.




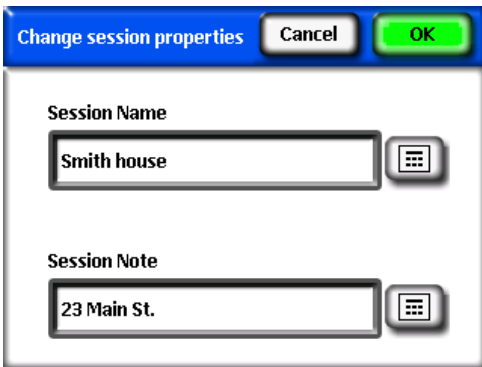
The keyboard entry dialog has a few features that make entering and modifying text quick and easy. Select the  button to switch between an alphabetical keyboard and a QWERTY style keyboard. Also, as you type text, the Solmetric SunEye™ predicts the words you are typing. To select the predicted word, click on the word where it appears above the text area, as shown in the example below. This feature reduces the amount of typing required to enter text.



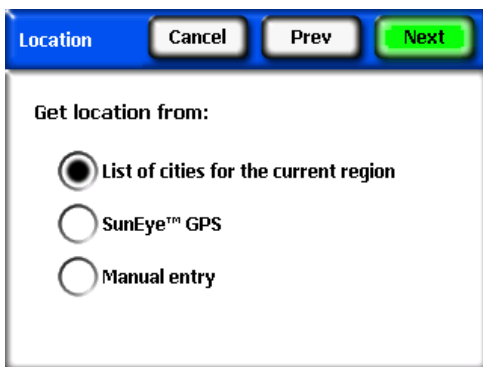
- Click inside the text box (where the typed letters appear) to bring up the scroll control. The scroll control allows you to move the cursor inside the text area to delete or add letters.
- Use the arrow buttons to move the cursor.
- Press **Clear Text** to clear all text.
- Click anywhere outside the scroll control box to close the scroll control.



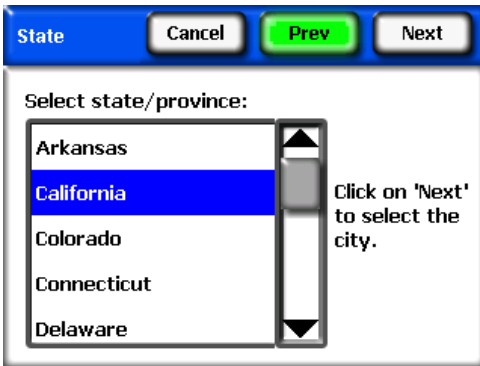
- Additionally, you can select the keyboard icon  next to the **Session Note** text box and enter a description of the session. For example, you could enter the address of the site or the client's contact information.



5. Select **Next** to advance to the **Location** dialog box to enter the site location information.



6. Select the location of the site using one of the following methods:
 - Select a city from a list of cities. In the **Location** dialog, select **List of cities for the current region**, then **Next**. Select the state where your site is located.

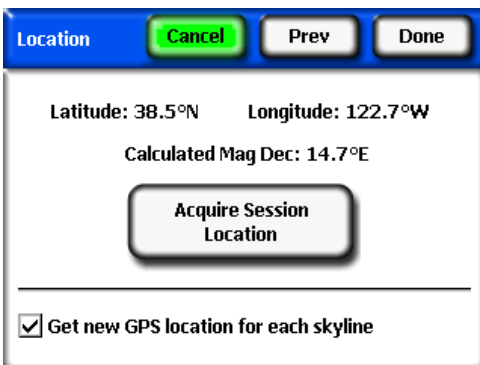


Click on **Next** and select the nearest city to the site.



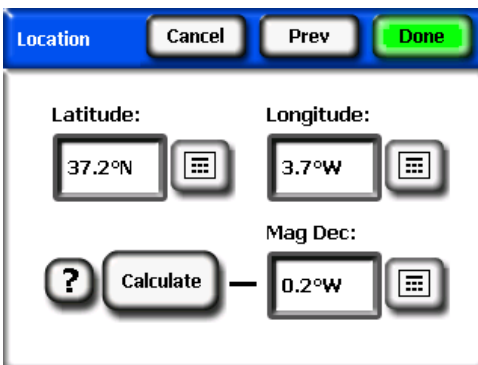
The Solmetric SunEye™ will automatically determine the correct latitude, longitude, and magnetic declination for the city you select. It is not necessary to select the exact city since the latitude and longitude will be very similar for nearby cities. The lists of states and cities available depend on the currently selected region, see section **Select Locale** on page 36. The city latitude and longitude data was obtained from www.geonames.org.

- Use the SunEye™ GPS to acquire your current location. In the **Location** dialog box, select **SunEye™ GPS**, then **Next**.



Make sure your GPS is on, click on **Acquire Session Location** and the latitude, longitude and calculated magnetic declination will be acquired. If you would like the GPS to acquire the location for each new skyline, check **Get new GPS location for each skyline**. In order to use coordinates outside of the United States, the **International** license is required to be installed. See the section **License Features** on page 36 for more information.

- Alternatively, enter the location manually. In the **Location** dialog box, select **Manual Entry**.



The screenshot shows a dialog box titled "Location" with a blue header bar. At the top right of the header are three buttons: "Cancel", "Prev", and "Done" (which is highlighted in green). Below the header, there are three input fields: "Latitude:" with the value "37.2°N", "Longitude:" with the value "3.7°W", and "Mag Dec:" with the value "0.2°W". Each input field has a small icon to its right. Below the "Mag Dec" field is a "Calculate" button and a question mark icon.

Enter the longitude, latitude, and magnetic declination. (If you have previously selected a city, the corresponding latitude, longitude, and magnetic declination for the selected city appear in the text boxes.) The **Calculate** button will recompute the magnetic declination for the latitude and longitude that are entered. In order to enter a location outside of the United States, the **International** license is required to be installed. See the section **License Features** on page 36 for more information.

7. Select **Done**. You will see the Session Properties which lists the information you entered for the session.

Session Properties

<p>Smith house 09/27/07 17:04 23 Main St.</p>	<p>Change info...</p>
<p>Location Latitude: 38.5°N Longitude: 122.8°W Mag Dec: 14.8° Time Zone: GMT - 08:00</p>	<p>Change location...</p>



8. Change any information, as necessary.

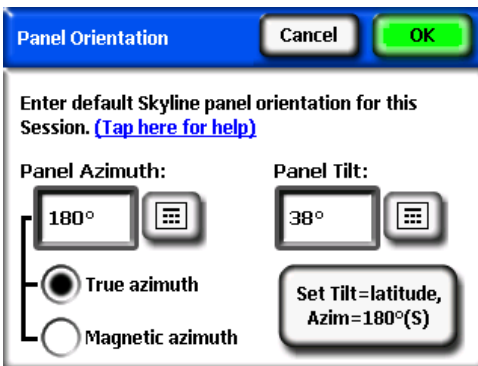
NOTE *The time zone associated with a session is whatever the time zone setting was last set to (via the **Set Date and Time...** dialog box) at the time the session is created. Changing the time zone (via the **Set Date and Time...** dialog box) does not change the time zone of any existing session(s). It is not possible to change the time zone of an existing session.*

Capture a Skyline

A skyline is the basic data set representing the solar access for a particular location within a session or site visit. You will generally capture multiple skylines for each session. For example, if you were analyzing a roof site for a new solar installation, you might capture a skyline at each corner and at the center of the roof. A skyline consists of a fisheye image, superimposed sunpaths, and the calculated solar access numbers.

1. Select  > **Skyline > New.**

Before capturing the first skyline in a new session, you will need to set the default skyline panel orientation for the session from the **Panel Orientation** dialog box.



You can change the default skyline panel orientation by tapping on the **Panel Azimuth** and **Panel Tilt** numeric boxes. If the **True azimuth** radio button is selected, then the panel azimuth entered is the true azimuth. If the **Magnetic azimuth** radio button is selected, the panel azimuth entered is magnetic.

NOTE For panel azimuth; 0° is north, 90° is east, 180° is south, and 270° is west. For panel tilt, 0° is flat, 90° is vertical.

Tap the **Set Tilt = latitude, Azim = 180°(S)** button to set the orientation to the default, which is tilt = latitude, azimuth = 180° (in northern hemisphere) or 0° (in southern hemisphere).

NOTE When the first skyline in a new session is created, the skyline's panel orientation is set to the default skyline panel orientation. The panel azimuth and panel tilt of a skyline can later be changed from **Skyline > Properties**. When a new skyline is created, the panel orientation always defaults to the orientation of the last skyline.

See the section **Surface Orientation** on page 54 for more information.

Set the default skyline panel azimuth and panel tilt, then select **OK**.

You will now see a live preview of the skyline through the fisheye lens with the correct sunpaths for that location superimposed on top.



2. Be sure the protective cover is completely open so that the compass is level.
3. For northern hemisphere SunEye™ devices (100N and 110N), orient the Solmetric SunEye™ toward the magnetic south by lining up the white end of the compass needle with **S**. This orientation is for a location in the northern hemisphere. For a location in the southern hemisphere, line up the white end of the compass needle with **N** to orient the device magnetic north.

For the southern hemisphere SunEye™ device (110S), orient the Solmetric SunEye™ toward the magnetic north by lining up the red end of the compass needle with **N**. This orientation is for a location in the southern hemisphere. For a location in the northern hemisphere, line up the red end of the compass needle with **S** to orient the device magnetic south.

NOTE *The Solmetric SunEye™ automatically accounts for the magnetic declination, based on the location you entered for the session.*

4. Hold the instrument level by adjusting the position and observing the bubble level. It is level when the bubble is inside the center circle.



NOTE *The accuracy of the measurement is directly related to how close to magnetic south the compass points and to how level the unit is held at*

the time the skyline is captured. Care should be used during these critical steps.

5. Press **Snap** or press the center navigation button.

The Solmetric SunEye™ performs the following tasks:

- Captures the entire horizon with the built-in fisheye lens and digital camera.
- Plots the sunpaths on top of the captured digital image of the skyline.
- Acquires the location using the GPS if this property is set in

 >  > **GPS Setup....**

- Analyzes the image and attempts to identify unobstructed open sky and shade-causing obstructions.
- Calculates the monthly, seasonal, and annual solar access percentages.

6. Verify that the software has correctly identified the open sky and obstructions. You can verify that the yellow and green annotation is correct by looking at the image through the annotation colors to make sure obstructions are green and open sky is yellow. Incorrect identification will affect the accuracy of the calculations. Correct the annotation if needed with the edit tool as described below.

NOTE *Skylines are automatically saved every time they are captured.*

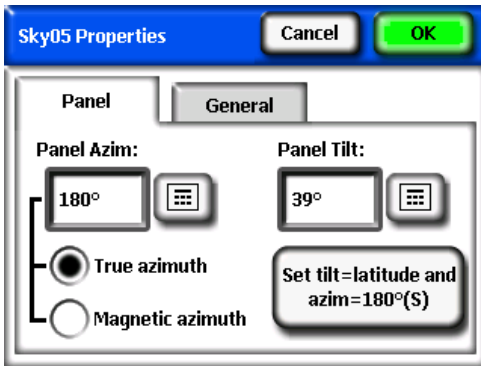
NOTE *To delete the skyline data that you just captured, press the navigation button to the left. Alternatively, to immediately capture another skyline, press the navigation button to the right.*

7. Tap your finger on the top-right corner of the screen to enter a note for the captured skyline. The note could include a description of where the skyline was captured. For example, you could enter “Southeast corner of roof.” You can also enter a skyline note via the **skyline properties** dialog, described in the next step.

8. You can view and change the properties of a skyline by selecting

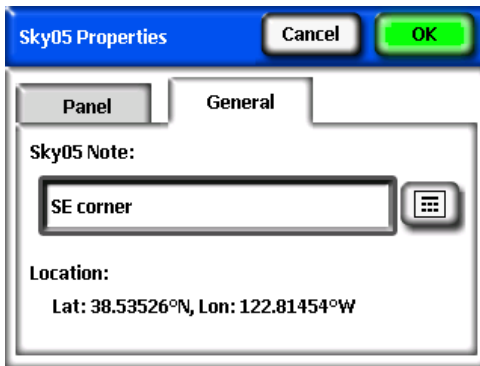
 > **skyline>skyline properties....**

The **skyline properties** dialog had two tabs, **Panel** and **General**. The panel orientation for a skyline can be modified in the **Panel** tab.



The panel orientation is changed in a method similar to setting the default skyline panel orientation in the **Panel Orientation** dialog box, see page 20 for details.

Other skyline properties can be accessed in the **General** tab.



You can enter or change the note for the skyline by tapping on the **SkyXX Note** text box.

If a GPS was used to make a measurement at the time the skyline was created, then the GPS location will be displayed.


View the Skyline Measurement Data

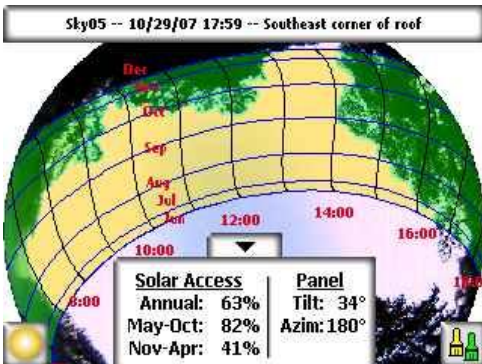
You can choose from three main views of your skyline data, and one average data view of all skylines in your session:

- Annual sunpaths view
- Monthly solar access view

- Full fisheye view
- Session solar access averages

Annual Sunpaths View

The first display that you see after you capture a new skyline is the annual sunpath view. You can also access this view by selecting  >View>Annual Sunpaths. This view shows the annual sunpaths drawn on top of the captured skyline. The detected open sky is shown in yellow. The detected shade-causing obstructions are shown in green. The annual and seasonal solar access is shown in the results panel. The seasonal month ranges, May-Oct and Nov-Apr, represent the common peak and off-peak rate seasons. Your local utility may use a different set of months.



NOTE You can magnify the screen using the zoom tool. See **Zoom and Pan Tools** below.

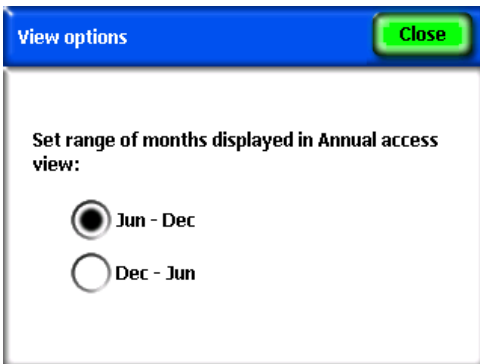
The results panel with the solar access numbers and edit button can be lowered to see the image behind it by pressing the down arrow. It can be raised again by pressing the up arrow. The month lines represent the path of the sun on the 21st day of that month.

The sunpaths are shown in “clock time”, meaning the hour lines represent actual clock time. This is in contrast to “solar time”. Solar time is based solely on the location of the sun in the sky and can differ from clock time by +/- 20 minutes.


NOTE The sunpath hour lines do not take into account daylight savings adjustments.

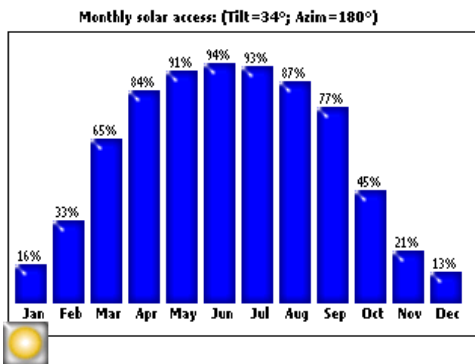
Because the sunpaths show clock time, it is not possible to clearly display all 12 months of the year. The sunpaths will always display the summer and winter solstices (June 21st and December 21st). To select which months are shown in

between the solstices, select:  >View>View Options... You will see the following dialog box:




Monthly Solar Access View

Select  >View>Monthly solar access. You will see the bar chart of the monthly solar access for the location where you captured data.



The height of the bars and the numbers at the top of each bar, indicate the percentage of solar energy available each month for the site-specific shade conditions. If there were no shade obstructions, the bars would all indicate 100%. If the location were shaded all year round the bars would all indicate 0%.


Full Fisheye View

Select  > **View** > **Full Fisheye**. This display option shows the full view of the site captured through the fisheye lens of the camera.



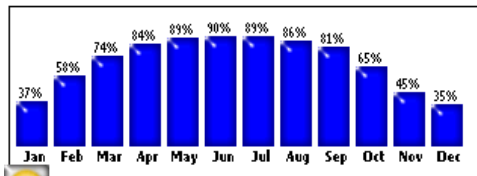
NOTE You can magnify the screen using the zoom tool. See **Zoom and Pan Tools** below.

Session solar access averages

Select  > **Session** > **Session Solar Access Averages**. After selecting the skylines in the session you would like to average, the **Session Solar Access Averages** will be displayed. This view calculates the average annual, seasonal, and monthly solar access values for the selected skylines in the currently opened session.

Session Solar Access Averages
Averages of all skylines(5) in "Session 2"

Annual: 72%
May-Oct: 83% Nov-Apr: 58%



Tools

This section describes the Edit Tool and Zoom and Pan Tools.



Edit Tool


The edit tool allows you to modify the annotated open sky and shade-causing obstructions for the following uses:

- See the effects of adding or removing shade-causing obstructions. For example, a tree or part of a tree can be removed to see the effect of cutting down or trimming the tree. Or, the area in between story poles can be filled-in to see the effect of a new proposed building.
- Correct the open sky annotation if the software incorrectly detects the open sky or obstructions.

When your edits to the annotated open sky and obstructions are applied, the Solmetric SunEye™ recalculates the solar access numbers. The new calculations allow you to see the difference in solar access between current conditions versus hypothetical conditions.

Editing on the Hand-Held Device

1. Open the edit tool by pressing the  button in the bottom right corner of the results panel in the annual sunpaths view. If you are not already there, you can get to the annual sunpaths view by selecting  > **View>Annual Sunpaths**.

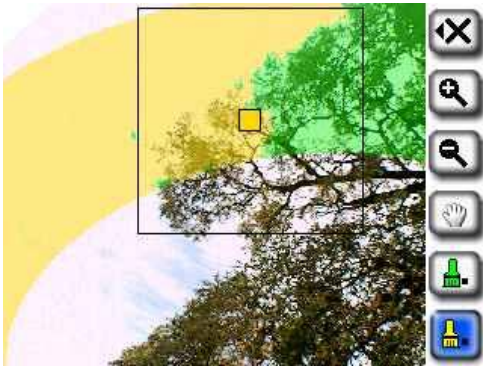
2. To add open sky, select the yellow open sky paint brush  to edit the open sky portion of the captured image:


- a. Click in the image where you want to add open sky.

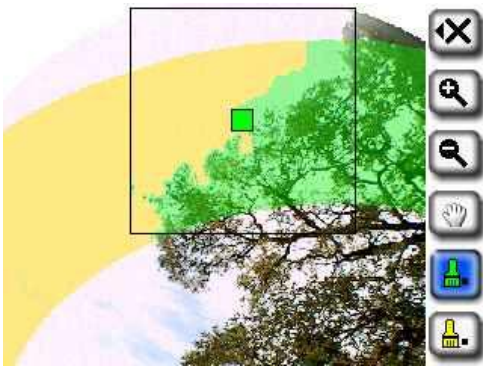
NOTE *You can only draw within the sunpath region on the hand-held device. In the desktop software there is the option to edit outside of the sunpath region as described below.*


- b. Paint by moving your finger around in the image.

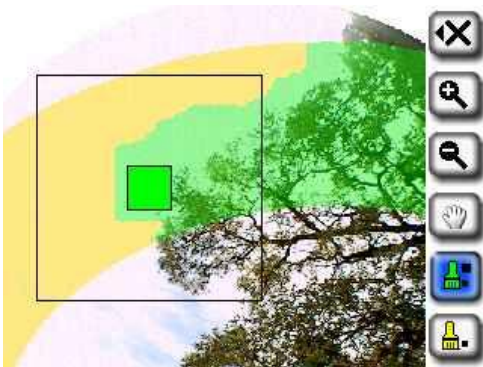
Your finger nail provides the best control for painting. Try to maintain contact with the screen when moving the brush around the image. You can hold the paint brush anywhere in the large box that surrounds the small yellow square. Only the yellow square actually paints.



3. To add obstructions, select the green obstruction paint brush  to draw in shade-causing obstructions. For example, you may want to determine what the solar access will be when a fast-growing tree is a few feet taller or when a new structure is built. You can do this by painting-in the new obstruction.



4. To cover a large area on the screen with the paint brush, select the brush icon again to increase the size of the brush. You will see two squares on the tool icon, indicating the large brush: .



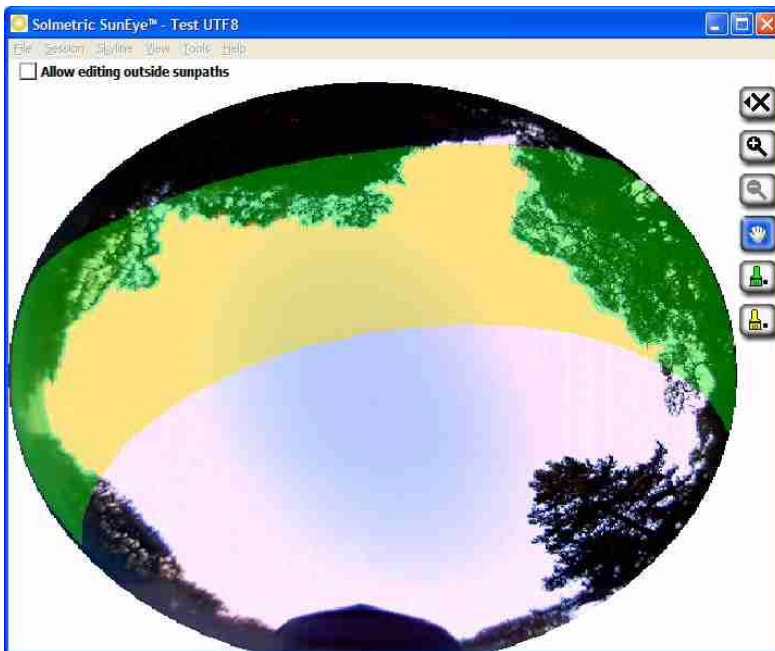
- If you want to return to the smaller brush size, select the brush tool again to decrease the size of the brush. You will see one square on the tool icon, indicating the small brush.
5. Select the **X** icon and then select **Apply Changes** to apply the edits to the annual solar access calculation.
- If you want to keep the current annotation of the open sky and obstructions, select **Cancel Changes**.

NOTE *You can magnify the image using the zoom tool as described below in the section **Zoom and Pan Tools**.*

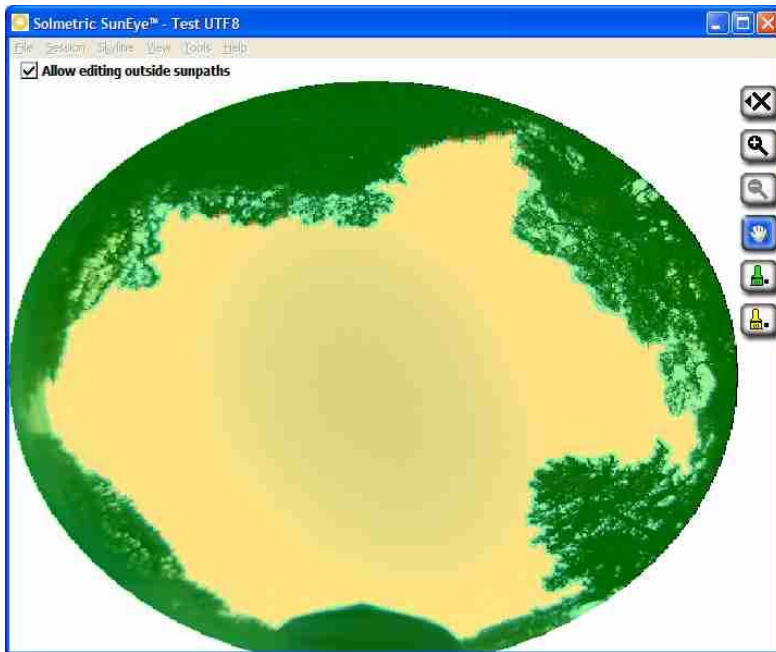
Editing in the Desktop Companion Software

Editing in the Desktop Companion software is identical to editing on the hand-held device, as described above, except, in the desktop software you can choose to edit outside of the sunpath region. Editing outside of the sunpath region is useful if you use the exported obstruction elevations data table (see the section **Exported Data Files** on page 44). The region outside of the sunpaths contributes ambient light to the total light seen by a surface.

The edit tool in the Desktop Companion software is shown below:



To enable the editing of the open sky region select “allow editing outside sunpaths” from within the edit tool. The screen will change to show the annotated open sky region for the entire image as opposed to just in the sunpath region as shown below:




NOTE *Setting the editor to edit outside of sunpath region will cause the exported report to show the annotations outside of the sunpaths as well.*



NOTE *Editing outside of the sunpath region has no effect on the solar access values reported by the SunEye.*


Zoom and Pan Tools

You can magnify the skyline image using the zoom tool and pan the screen using the pan tool. These tools are available in the following display modes and views:

- Annual Sunpaths View
- Full Fisheye View
- Edit mode

While in the Annual Sunpaths or Full Fisheye views, you can access the zoom and pan tools by selecting  > **View > Zoom**. In Edit mode, the zoom and pan tools are part of the tool bar on the right side of the display.

- Use the zoom-in  and zoom-out  tools to magnify or de-magnify the displayed image.
- Pan around the image of skyline data by sliding your finger across the screen. Using your fingernail, as opposed to fingertip, works best.

NOTE *If you are in the edit tool, you will need to select the pan tool  before you can pan the image.*

Managing Session and Skyline Files

The Solmetric SunEye™ organizes the solar access data in Sessions and Skylines.

Session A “Session” is a *collection* of measurement data that was taken for a particular site visit. You will generally create a new session for each client or site you visit. An example of a session name might be “Roger Smith’s House”. One session will generally contain multiple skyline data sets.

You can add notes to the session to help identify the session in the future. For example, you could include client contact information or other information about the particular site being analyzed.

Skyline A “Skyline” is a *single set* of solar access data captured at a specific location within a site. For example, one skyline might be captured at the north side of the roof of Roger Smith’s house. Another skyline might be captured at the center of the roof of Roger Smith’s House. A skyline includes a fisheye image, a sunpath diagram, and solar access calculations. Every time a new skyline is captured, the data is stored under the current session. One session can hold many skylines.



You can add notes to a skyline to help identify the skyline in the future. For example, you could include the location of the captured data such as “north side of roof.”

NOTE *The Solmetric SunEye™ can store more than 50 skylines (the actual number depends on the particular images captured and can get up to 200 in some cases). The number of sessions does not matter. You can have one session with 50 skylines or 50 sessions with one skyline each.*



Browsing for Data

You can view previously saved session and skyline data by browsing the stored sessions or skylines.

To Access the Sessions

- Select  > **Session** > **Browse...** to see a list of currently stored sessions. Select a session from the list.
- Select **Open** to make the selected session the currently open session.
- Select **Delete** to erase the selected session and all of the associated skylines from memory.
- Select  > **Session** > **Properties** to see the session name, notes, and location information for the currently open session.

To Access the Skylines of the Currently Open Session

- Select  > **Skyline** > **Browse...** to see a list of stored skylines that make up the currently open session. Select a skyline from the list.
- Select **Open** to make the selected skyline the currently open skyline.
- Select **Delete** to erase the selected skyline from memory.
- Select  > **Skyline** > **Skyline Note...** to see or change the skyline note.

NOTE You can also use the Solmetric SunEye™ Desktop Companion Software to transfer the sessions and skyline data through USB to your PC to store, further analyze the data, or add or modify notes. See the next chapter, **Using the Solmetric SunEye™ Desktop Companion Software**.

Utility Features

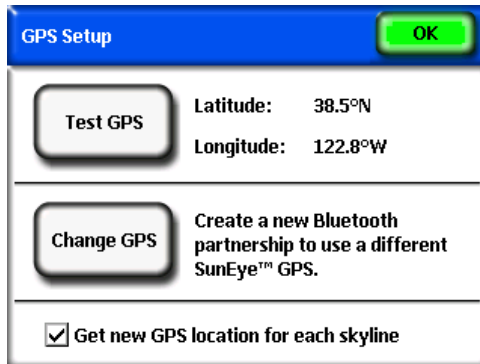
Select  then  to access the utility features. The utility features are:

Align Touch Screen

- Use this to re-align the touch screen if the touch screen appears to respond to clicks offset from where you touch.
- When performing a touch screen alignment, use the stylus or a pointed (but not sharp) implement. It is important to hit the targets accurately and to not slide off the targets. The procedure will repeat until a set of valid touch points have been recorded.

GPS Setup

- Use this dialog to setup the SunEye™ GPS.



- Click on Test GPS to test the GPS by acquiring the current location.
- Click on Change GPS to create a new Bluetooth partnership with a different SunEye™ GPS. You will need to create a Bluetooth partnership between the Solmetric SunEye™ and the GPS before trying to acquire a location. If this is the very first time using a GPS with your Solmetric SunEye™ click on New GPS rather than Change GPS to create the initial partnership.
- Check Get new GPS location for each skyline to get the GPS location with each new skyline.

Set Date and Time

- Use this to set the current date, time, and time zone.

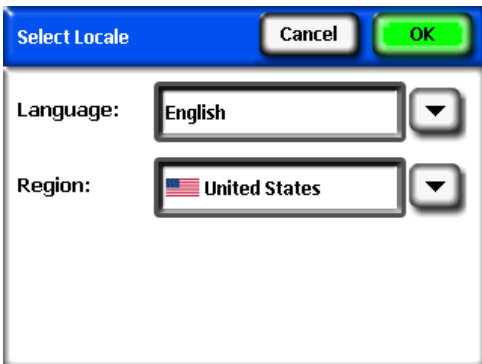
Licenses

- Use this dialog to show which licenses are currently installed on your Solmetric SunEye™. Licenses are required to unlock additional functionality that is not included with the basic software. For more information about licenses see the section **License Features** on page 36.



Select Locale

- Use this dialog select the language and region of your device. Selecting the region will change the list of cities available for setting the session location. The selected region will also change the formatting of numbers and time/dates to be region specific. The **International** license is required to select language or region to anything other than **English** and **United States**. See the section **License Features** on page 36 for more information about licenses.



About Solmetric SunEye™

- Use this to get information about the Solmetric SunEye™, including software version and battery level.

License Features

- The Solmetric SunEye™ software can be enhanced with additional sets of features by purchasing licenses. Currently, the only additional license available for purchase is the **International** license. For information on how

to see which licenses are installed or to install new licenses on your Solmetric SunEye™ device, see the section **Managing Licenses** on page 40. For information on how to purchase licenses, go to www.solmetric.com.

- **International License** – This license provides international support by allowing selection of the language and region. See the section titled Select Locale on page 36 for more information.

Using the Solmetric SunEye™ Desktop Companion Software

The Solmetric SunEye™ desktop companion software has a similar user interface to the hand-held device. Once your Solmetric SunEye™ has been “synched” with the companion software through the Device/USB cable, you can transfer your data from the Solmetric SunEye™ to your desktop PC. The data on your desktop PC is archived for later viewing and analysis. The same data views and tools available from the hand-held device are also available from the desktop software. The companion software also allows you to export the measurement data to a single report and a variety of file formats.

This chapter is a reference for the Solmetric SunEye™ desktop companion software operation and includes the following sections:

- Transferring, Storing and Viewing Your Data
- Viewing and Analyzing your Data
- Exporting and Generating Reports

If you have not yet installed the Solmetric SunEye™ Desktop Companion software, please refer to the instructions in the section **Installing the Solmetric SunEye™ Desktop Companion Software** on page 5.

Launch the Solmetric SunEye™ Desktop Companion from the Solmetric SunEye icon on your desktop or from the Windows start button:

 >All Programs>Solmetric SunEye>Solmetric SunEye.

Transferring and Storing Your Data

Within the Desktop Companion application, select **File>Transfer from Device**.

The data transfer moves all sessions and skylines from your hand-held device to your desktop PC. The data files are no longer available on the hand-held device after the data transfer takes place. The data is stored on your PC in the location “My Documents/Solmetric/SunEye/Sessions.” The directory name for each transferred session is a combination of the session name and the time and date the session was created. For example, “2006_08_16.222016;Session 1.” This way multiple sessions with the same name do not get overwritten.

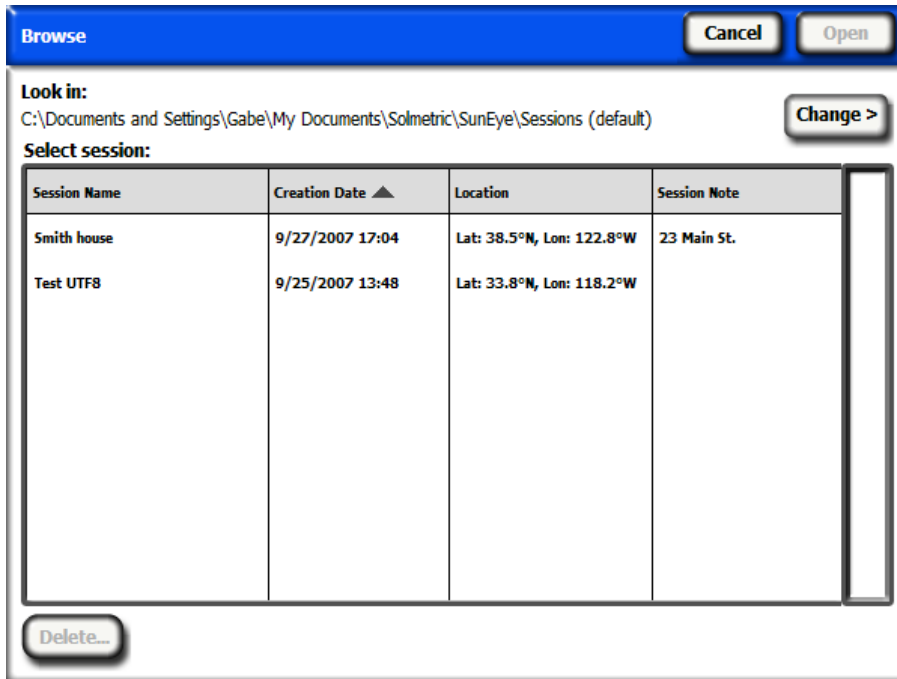
Viewing and Analyzing your Data

The Solmetric SunEye™ desktop companion software has a similar user interface to the hand-held device. Once you have transferred your data from the hand-held device to the desktop PC, you can:

- Browse sessions by selecting **session>browse...** (See below)
- Browse skylines in the currently open session by selecting **skyline>browse...**
- View the data for the currently open skyline via the **view** menu.
- Modify or add session or skyline notes.
- Edit the open sky regions of a skyline.

Browsing Session Data

You can browse sessions by selecting **session>browse...** You will see the following dialog box:



By default sessions are stored in:

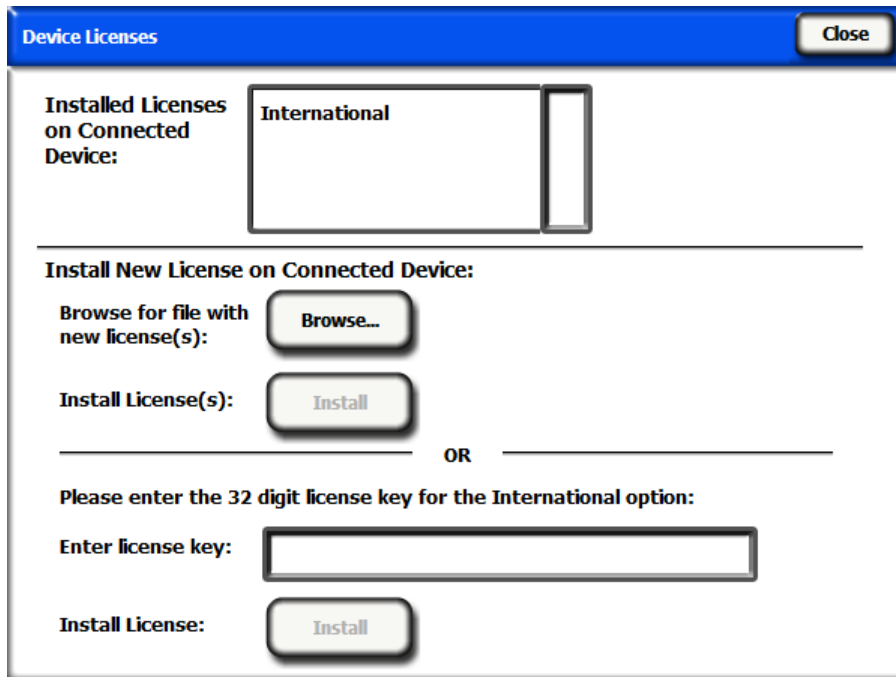
My Documents\Solmetric\SunEye\Sessions

You can display sessions from a different directory by selecting **Change >**, then selecting **Change 'Look In' location...** If you select **Set 'Look in' location to default** it will automatically display sessions from the default sessions directory.

NOTE *The Session browse dialog orders sessions with the most recently created session at the top. You can re-order the list of sessions based on other column values by clicking on the column heading that you would like to sort by.*

Managing Licenses

Select **Tools>Device Licenses...** to view installed licenses and to install new licenses on the currently connected SunEye™ device. For more information on licenses, see the section **License Features** on page 36.



A license will be provided to you via email or on a CD-ROM in the form of a text file. The contents of this text file will contain a key which will identify the license named on a particular SunEye with the serial number that it was created for. There are two ways to install a license. You can click on the **Browse...** button and browse for and select the license file. Alternatively, you can directly enter the license key in the **Enter License Key:** field by entering the numerical key exactly as it appears in the file.

Exporting and Generating Reports

Within the Desktop Companion application, select **File>Export Session Report** to export the session data to a report and to generate exported data files.

The export tool combines all of the skyline data for the currently open session into a single, easy-to-read report. It also generates the exported data files described below. The original data remains stored on your computer in the location described above. Exported reports are in an HTML document format that is viewable with a Web browser such as MS Internet Explorer®. You can quickly jump to data of interest using the hyperlinks in the file.

At the time the data is exported, you have the opportunity to customize the report by entering client information that will appear in the report, as shown below.

Export Session Report and Data Cancel Prev Next

Enter information about the client for whom this report will be generated:

Client Name (Required):

Address Line 1:

Address Line 2:

City:

State/Province:

ZIP/Postal Code:

Phone Number:

You can customize the report further by entering information about your company, including name and address.

Export Session Report and Data Cancel Prev Next

Enter your information (creator of this report):

Your name (Required):

Address Line 1:

Address Line 2:

City:

State/Province:

ZIP/Postal Code:

Phone Number:

Next the export wizard gives you the opportunity to specify a specific location to store the report and the ability to select your company logo which will appear in the report.

An HTML document is automatically created consolidating the data for a single session. The document contains the notes, and annual sunpath and bar chart images for each skyline in the session. The report can be immediately viewed by selecting the “View report now” button. Or it can be viewed later by selecting **File>Browse Exported Session Reports...**, or by navigating with Windows File Explorer to the location where the report was saved. By default, reports are saved in My Documents\Solmetric\SunEye\Exported Reports.

Print the Report

The report contains a hyperlink to a “importable and printable” version of the report that does not include the hyperlinks and can be imported into other software programs such as MS Word® or Adobe Acrobat®, or it can be printed and given to clients. Print the report by selecting “print” from your browser.

Save Images from the Report

Images in the report can be saved for use elsewhere by right clicking on the image and selecting “save picture as...”. Images in the report can also be found wherever the report was specified to be saved in the sub-directory “Exported Files”. These images can be used to create your own custom report.

Convert Report to Other Formats

The HTML report generated by the desktop companion software can be converted to other formats such as .doc or .pdf by opening it in the appropriate editor (for example MS Word® or Adobe Acrobat®) and then saving it as the file type you prefer.

In MS Word, there is a specific procedure that must be followed in order to convert HTML documents to .doc documents in which the images show up as permanent elements of the document rather than as links:

1. Open the .htm report in MS Word
2. Go to the “Edit” menu and choose “Select all.” This will select everything in the document.

3. On your keyboard, press the key combination Ctrl-Shift-F9 together. This will convert all external links to embedded content.
4. Go to the “File” menu and choose “Save As.” Under “Save as type” select Word Document (*.doc). Click “Save”.

Emailing or Sharing the Report Electronically

Since the report is in an HTML format, you cannot simply send the .htm file to someone electronically because the images and data files are separate files that have hyperlinks pointing to them. The files that make up the report are all located in the subdirectory “ExportedFiles” where your report is located.

The easiest way to share the report with someone else is to either convert it to a single file format (such as .doc, or .pdf) as described in the section above, **Convert Report to Other Formats**, and send that single file, or to compress the entire report directory into a single .zip file and send the .zip file. In Windows XP, you can compress the report by right clicking on the top folder of the report name (e.g. “Smith House Report”) and selecting **send to>compressed (zipped) Folder**.

Exported Data Files

The report also includes a table of hyperlinks to a number of data files, including comma-separated-value (.csv) files. These CSV files can be opened directly in MS Excel® or other software for further analysis.

Each CSV file has a header section at the beginning of the file that includes information such as the session and skyline names. The end of the header information and beginning of the data is always marked by the text “begin data”. The first line of the file describes the type of data and includes a version number. For example, “Daily Solar Access 1.0” indicates that the file is the daily solar access file and the file format is version 1.0. A description and example of each file type is given below. In each file name the XX would be replaced by the skyline number (e.g. 01, 02, etc for Sky01, Sky02, etc).

SkyXXDailySolarAccess.csv – This table gives the solar access percentage for every day of the year. It also includes the monthly, seasonal, and annual solar access percentages. An example of the header and part of the data is shown below:

Daily Solar Access 2.1													
Session Name:	Session1												
Skyline:	Sky01												
Creation Date:	11/3/2006 10:43:00 AM												
Latitude:	37												
Longitude:	-122												
Mag Dec:	14												
Panel Tilt:	37												
Panel Azimuth:	180												
Time Zone:	GMT-8:00												
		Month											
begin data	Day	Jan	Feb	Mar	Apr	May	Jun	Jul	Aug	Sep	Oct	Nov	Dec
	1	35.16	36.72	38.16	55.61	64.65	85.11	95.29	77.34	54.97	47.97	40.07	29.13
	2	35.16	36.72	38.16	55.61	64.65	85.11	95.29	77.34	54.97	47.97	40.07	29.13
	3	35.16	36.72	38.16	55.61	64.65	85.11	95.29	77.34	54.97	47.97	40.07	29.13
	4	35.16	36.72	38.16	55.61	64.65	85.11	95.29	77.34	54.97	47.97	40.07	29.13
	5	29.36	40.23	41.05	55.11	67.64	85.14	92.22	69.85	54.87	45.17	36.68	29.35
	6	29.36	40.23	41.05	55.11	67.64	85.14	92.22	69.85	54.87	45.17	36.68	29.35
	7	29.36	40.23	41.05	55.11	67.64	85.14	92.22	69.85	54.87	45.17	36.68	29.35

SkyXXShading.csv – This table shows a 1 or a 0 every 15 minutes of every day of the year. A 1 indicates that that time and date is not shaded and a 0 indicates that it is shaded. This table is particularly useful for time-of-use (TOU) analysis.

NOTE *Note this data is in standard time and does not include adjustments for daylight savings.*

NOTE *This data is not affected by panel tilt or azimuth orientation.*

This data file can be imported into different analysis software programs, including OnGrid (see: <http://www.ongrid.net>), and PVOptimize (see: <http://www.PVOptimize.com>). An example of the header and part of the shade data is shown below:

Shading 1.1																	
Session Name:	Session 1																
Skyline:	Sky01																
Creation Date:	11/3/2006 10:43:00 AM																
Latitude:	37																
Longitude:	-122																
Mag Dec:	14																
Panel Tilt:	37																
Panel Azimuth:	180																
Time Zone:	GMT-8:00																
A value of "1" implies that the time interval is exposed to open sky. A value of "0" implies that the time interval is shaded.																	
These values are not affected by panel tilt or azimuth.																	
begin data	5:00	5:15	5:30	5:45	6:00	6:15	6:30	6:45	7:00	7:15	7:30	7:45	8:00	8:15	8:30	8:45	9:00
1-Jan											0	0	0	0	0	0	0
2-Jan											0	0	0	0	0	0	0
3-Jan											0	0	0	0	0	0	0
4-Jan											0	0	0	0	0	0	0
5-Jan											0	0	1	1	0	0	0
6-Jan											0	0	1	1	0	0	0
7-Jan											0	0	1	1	0	0	0
8-Jan											0	0	1	1	0	0	0
9-Jan											0	0	1	1	1	0	0
10-Jan											0	0	1	1	1	0	0
11-Jan											0	0	1	1	1	0	0
12-Jan											0	0	1	1	1	0	0

SkyXXInsolation.csv – This table gives the weather-corrected insolation in Wh/m² every 15 minutes for every day of the year for the specific panel tilt and azimuth specified for the skyline. Weather corrections are based on historical average clearness indexes from NASA.

NOTE *This data is in standard time and does not include adjustments for daylight savings.*

NOTE *These values are not affected by shading (ie they assume no shading).*

An example of the header and part of the data is shown below:

Insolation 1.1																		
Session Name:	Session 1																	
Skyline:	Sky01																	
Creation Date:	11/3/2006 10:43:00 AM																	
Latitude:	37																	
Longitude:	-122																	
Mag Dec:	14																	
Panel Tilt:	37																	
Panel Azimuth:	180																	
Time Zone:	GMT- 8:00																	
Numbers along each data row are quarter-hour insolation contributions (Wh/m ²) of that time period assuming no shading and the panel tilt and azimuth specified above. Monthly clearness indexes have been applied.																		
Clearness indexes:	Jan	Feb	Mar	Apr	May	Jun	Jul	Aug	Sep	Oct	Nov	Dec						
	0.53	0.6	0.6	0.6	0.6	0.6	0.6	0.6	0.7	0.6	0.6	0.5						
begin data	5:00	5:15	5:30	5:45	6:00	6:15	6:30	6:45	7:00	7:15	7:30	7:45	8:00	8:15	8:30	8:45	9:00	
1-Jan												20	36	48	59	70	80	90
2-Jan												20	36	48	59	70	80	90
3-Jan												20	36	48	59	70	80	90
4-Jan												20	36	48	59	70	80	90
5-Jan												19	36	47	58	69	80	90
6-Jan												19	36	47	58	69	80	90
7-Jan												19	36	47	58	69	80	90
8-Jan												19	36	47	58	69	80	90
9-Jan												19	35	47	58	69	80	90
10-Jan												19	35	47	58	69	80	90
11-Jan												19	35	47	58	69	80	90
12-Jan												19	35	47	58	69	80	90

SkyXXObstructionElevations.csv – This table reports the elevation of the highest shade-causing obstruction for every 1° of azimuth (i.e. compass heading). The azimuth is given in two different range formats: 0° to 360° and -180° to +180°. In the -180° to +180° format, 0° is south when in the northern hemisphere and north when in the southern hemisphere. The data includes information about the entire sky and horizon, including obstructions that appear outside of the sunpath region. The region outside of the sunpaths may be important for ambient light analysis. The obstruction elevation data in this file is also useful for importing into other design analysis software. An example of the header and part of the data is shown below:

Obstruction Elevations 1.1		
Session Name:	Session 1	
Skyline:	Sky01	
Creation Date:	12/12/2006 0:16	
Latitude:	39	
Longitude:	-123	
Mag Dec:	15	
Panel Tilt:	37	
Panel Azimuth:	180	
Time Zone:	GMT-8:00	
The elevation given for each azimuth represents the highest point a shade causing obstruction occurs at that azimuth.		
begin data		
Compass Heading (0-360deg; North=0; East=90)	Southerly Oriented Azimuth (-180 to +180; south=0; East=-90)	Elevation (0 to 90)
0	-180	55
1	-179	56
2	-178	56
3	-177	56
4	-176	56
5	-175	56
6	-174	56
7	-173	56
8	-172	57
9	-171	57
10	-170	57
11	-169	57

SkyXXObstructionElevation.xml – This file is an XML version of the SkyXXObstructionElevations.csv file described above. This file can be imported into the Clean Power Estimator and Quick Quotes analysis software (see: <http://www.clean-power.com>).

SkyXX_PV_SOL.hor – This is a shading file that is importable by PV*SOL (Valentin Energy Software).

SkyXX_PVSYST.hor – This is a shading file that is importable by PVSYST.

AverageSolarAccess.csv – There is only one of these files per session. It contains the solar access averages of all the skylines contained in the session. An example of the header and data is shown below:

Average Solar Access 1.0	
Session Name:	Session 1
Creation Date:	2/16/2007 17:02
Latitude:	39
Longitude:	-123
Mag Dec:	15
Time Zone:	GMT-8:00
Number of skylines:	3
The values reported are average percentages of all the skylines(3) contained in this session.	
begin data	
Annual:	67
May-Oct:	76
Nov-Apr:	54
Jan:	40
Feb:	48
Mar:	56
Apr:	76
May:	84
Jun:	87
Jul:	84
Aug:	82
Sep:	60
Oct:	56
Nov:	39
Dec:	49

AverageShading.csv – There is only one of these files per session. This file contains the average shading information of all the skylines contained in the session. The format of this file is similar to that of the SkyXXShading.csv shading files, however each data entry contains the average shading for that time increment for all skylines in the session. The values are in the range of 0 to 1.

GoogleEarthGeotags.kmz – There is at most one of these files per session report. This file will only be created if at least one skyline that has been selected to be included in the report was created using the option to get a new GPS location for each skyline. This is described in the GPS Setup section on page 35. It is therefore required that the Solmetric GPS option is used to access this feature. To view this KMZ file it is required that you have Google Earth installed. This can be obtained at <http://earth.google.com>. Each of the skylines in the report with GPS coordinates will show up as interactive placemarks within Google Earth. The location of each placemark will be determined by the GPS coordinate of the skyline. Clicking on a skyline placemark will open a window with report information and images about the skyline. The GPS coordinates for a skyline can be edited in the Desktop Companion software in the Skyline Property dialog. A placemark location may also be edited within Google Earth by right clicking on it, selecting Properties, and then dragging the placemark to a new location. You may then save any new locations to a new KMZ file from within Google Earth by going to the File menu and selecting “Save Place As”.

Solar Access and Interpretation of Data

This chapter gives an overview of the different variables involved in solar access and details about how the Solmetric SunEye™ calculates solar access. Solar access is defined as the amount of available solar energy or insolation in a particular location.

The reported solar access percentages are the amount of site-specific solar insolation available at the location where the data was captured given the shade-causing obstructions, divided by the solar insolation if there were no shading.

- If all trees, buildings, and other obstructions were theoretically removed, the solar access percentages would be 100%.
- If the measured site were completely shaded all year, the solar access percentages would be 0%.

In order to have an accurate estimate of the amount of insolation that will strike a specific surface over time, four variables need to be considered.

- Solar irradiance
- Shading
- Air quality and clouds
- Surface orientation

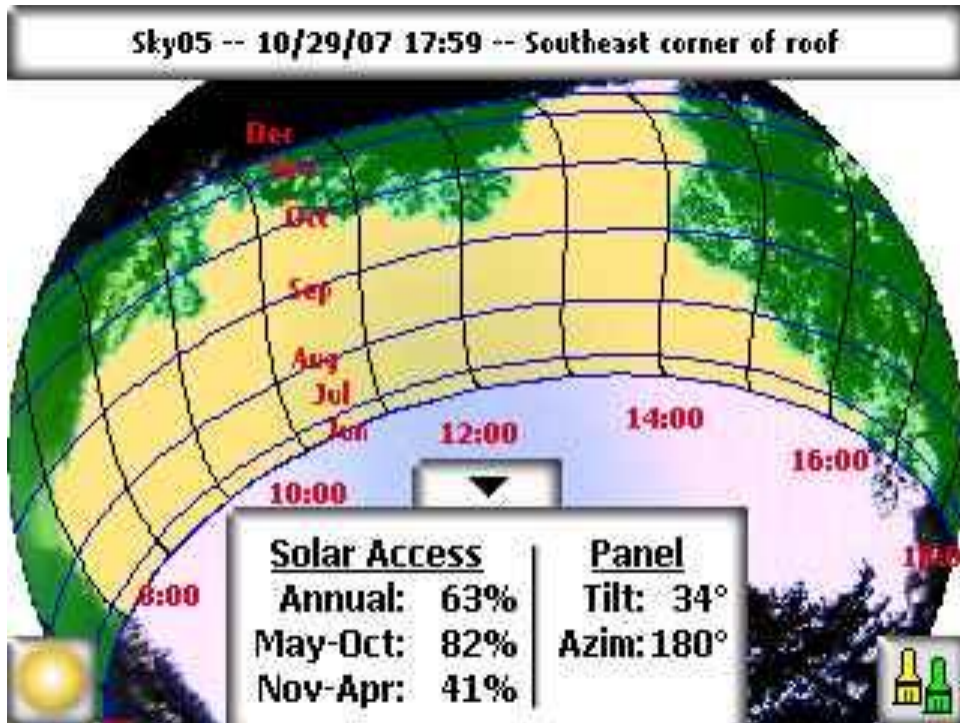
Solar Irradiance

The sun is a tremendous source of energy for the earth and is, in fact, the only significant net input of energy the earth has. Irradiance is the solar power incident on a surface, and is usually expressed in watts per square meter. Irradiance

multiplied by time equals insolation. The average irradiance arriving on the planet after passing through the atmosphere is commonly approximated to be 1000 W/m². The irradiance above the atmosphere is 1367 W/m².

Due to the tilt of the earth's axis, the sun is higher above the horizon in the summer months and lower in the winter months. The sun will also appear higher in the sky when the observer's latitude is closer to the equator (0° latitude) and it will appear lower in the horizon as the observer's latitude is closer to the north or south poles (±90° latitude). The height of the sun in the sky is not affected by the longitude or the east-west location of the observer on earth.

The sun's elevation is the angle formed between the observer, the horizon, and the sun above the horizon. The azimuth is the angle created by the sun's deviation from true north in relation to the observer. The sun follows a predictable path through the sky based on the time-of-day, day-of-year, and latitude of the observer. Therefore, the elevation and azimuth angle of the sun can be calculated for any time, date, and latitude. The collection of sun trajectories for the entire year is called a sunpath diagram. For example, a sunpath for San Francisco, California that was generated by the Solmetric SunEye™ is shown below:



The Solmetric SunEye™ automatically generates the sunpath diagram for the particular latitude where the data is collected. This sunpath chart is superimposed on top of the captured skyline image.

NOTE *The annual sunpaths are drawn in standard time and the exported *.csv data files are also in standard time. Daylight savings adjustments must be applied manually where appropriate.*

Shading

Shading is a serious design parameter to consider with regard to the performance of a solar system, placement of a building, or in landscaping. The *Solar Living Source* book by John Schaeffer, comments on shading of crystalline PV collectors, “Short of outright physical destruction, hard shadows are the worst possible thing you can do to a PV module output.”

Shading may be produced by geological formations, vegetation, and human-made structures, such as buildings. Minor shading can result in a significant loss of energy. This is because the solar cell with the lowest illumination determines the operating current of the series string in which it is connected. The voltage output may remain the same, but the current will be significantly reduced.

The Solmetric SunEye™ automatically gives an accurate analysis of the shading for the specific location.

Weather, Air quality and Clouds

Moisture, pollution, clouds, and particles in the atmosphere block a portion of the sun's energy from reaching the earth. The Clearness Index (K_T) is a number from 0 to 1 that describes the amount of solar radiation that passes through the atmosphere.

Historical clearness index data by region and solar insolation data is available from NASA at <http://earth-www.larc.nasa.gov/cgi-bin/cgiwrap/solar/sse.cgi>.

The National Renewable Energy Laboratory (NREL) has also developed the National Solar Radiation Data Base (NSRDB) containing 30 years (1961-1990) of solar radiation and supplementary meteorological data from 237 sites in the U.S., plus sites in Guam and Puerto Rico. See http://rredc.nrel.gov/solar/old_data/nsrdb/.

The Solmetric SunEye™ contains an internal database of clearness indices by latitude and longitude for the entire world based on the NASA data mentioned above. The Solmetric SunEye™ software automatically accounts for the approximate average clearness index for the region you specify for your session when calculating the solar access.

To obtain Wh/m² or peak-sun-hours, take the percentages from the Solmetric SunEye™ and multiply them by the average solar insolation for your region.

Surface Orientation

The amount of energy absorbed from the sun depends on the angle and orientation of the surface receiving the irradiation. For example, the magnetic orientation and tilt of solar panels affect the energy collected by those panels. The difference in solar energy collected by a solar panel at 38.07° North with a 0° tilt versus a tilt of 35° is about 11%.

By default, solar access results in the Solmetric SunEye™ are based on the following assumed configuration:

- The receiving surface (a solar panel, for example) is oriented south if you are in the northern hemisphere, and oriented north if you are in the southern hemisphere.
- The tilt is equal to the latitude of the site location.

For example, if the latitude of the site that is being evaluated is 37, then by default the solar access calculations performed in the Solmetric SunEye™ are assuming a surface tilt of 37 from horizontal. This panel tilt and azimuth can be adjusted by the user for optimizing energy production and/or conforming to a roof structure.

The orientation used to calculate solar access can be changed via the **skyline properties** dialog. See step 8 of section **Capture a Skyline** on page 20 for more information.

Shading can have a greater effect on energy output than the tilt and orientation of a system. Shifting a panel array in order to avoid shade or orienting panels to optimize collection during the un-shaded times of day and year is one of the most important steps in solar system design.

For more information about designing and installing a solar system, see:

http://www.sandia.gov/pv/docs/Design_and_Installation_of_PV_Systems.htm

Numerical Calculations

The following numerical assumptions are made by the Solmetric SunEye™ software when calculating results:

- Solar constant (above-the-atmosphere solar irradiance): 1367 W/m²
- Atmospheric pressure: 1013 mBars
- Atmospheric temperature: 15°C
- Panel orientation: south with tilt equal to latitude
- Clearness index (K_T): NASA historical monthly averages by latitude and longitude

The solar access numbers reported by the Solmetric SunEye™ are percentages that are calculated by first calculating insolation (Wh/m²) for every 15 minute time interval, every 4 days, for the entire year. This insolation value includes NASA average historical weather data for the latitude and longitude set in the session. Next, the skyline data is analyzed to determine which 15 minute intervals throughout the year are shaded. The sum of the un-shaded 15 minute insolation values for a given period (for example 1 month) divided by the total insolation possible (assuming no shading) for the same period times 100 gives the solar access percentage for that time period.

Maintenance and Troubleshooting

The Solmetric SunEye™ is an electronic device, please follow these guidelines to maintain its functionality and performance:

- The Solmetric SunEye™ device has an operating temperature range of 32°F to 104°F. Do not operate the device outside of this temperature range.
- The Solmetric SunEye™ device should never be exposed (e.g. stored or transported) to a temperature below -4°F or above 140°F. Avoid leaving the device in the direct sun for an extended period of time. Even though the ambient temperature may be 80°F, the temperature of the device left in sun for half an hour can easily reach 130°F or more.
- Do not expose to moisture or dust.
- Keep the software up to date by downloading the latest installation software from the Solmetric web site at: www.solmetric.com/support.
- Periodically clean the lens with a lint free lens cleaning cloth
- Maintain the battery charge level and avoid allowing the battery to go completely dead even when not in use.


NOTE *Storage in the off state without the AC power or Device/USB cable attached will result in the slow discharge of the battery. It is not harmful to the device to be continuously connected to AC power or to a computer. It is also not harmful to the device or to your data for the battery to fully discharge, however you may be forced to go through a series of steps including a touchscreen alignment and tutorial.*

Upgrading or Downgrading Software

Solmetric periodically publishes free updates to the software. You can find the latest version of the Solmetric SunEye™ software at: www.solmetric.com/support. The software on the hand-held unit and the Desktop Companion are simultaneously installed from the same installation file.

To upgrade your software, simply run the installer by double clicking on the new setup executable file obtained from the web site.

To downgrade your software version to an earlier version, you must first un-install the current version as follows:

1. On the desktop computer go to  **Control Panel**.
2. Double click on **Add or Remove Programs**
3. Locate and select **Solmetric SunEye**
4. Click **Remove**
5. Close the **Add or Remove Programs** window
6. Install the older version as you would any version, by double clicking on the .msi file for the version you wish to install or inserting the CDROM with the old software and install as usual.

NOTE *Upgrading software will not affect your stored session and skyline data. All data will continue to be available. Downgrading software will not affect your stored session and skyline data, however, the sessions or skylines created in the newer software version may not be viewable in the older version.*

Reset

A “soft reset” restarts the Solmetric SunEye™ application. Under normal use, this reset is not needed.

- To initiate a soft reset, press the stylus provided or the end of a bent-open paperclip into the pin hole on the right side of the Solmetric SunEye™, next to the Device/USB port.

A “hard reset” restores the device to factory settings. Under normal use, this reset is not needed. The hard reset is different for different versions of the Solmetric SunEye™ device. Check the back of your device to see what version you have, and see the following instructions for performing a hard reset on your device.

- To initiate a hard reset, you will need the stylus provided or bent-open paperclip. Simultaneously press and hold the following buttons for four seconds.

Hard Reset Buttons for “SunEye-100” devices

Top-right button



Bottom-right button



Pin-hole soft reset button, as described above.

Hard Reset Buttons for “SunEye-100 v2”, “SunEye-110” and “SunEye-110 v2” devices

Power on/off button



Mail button, second from the top-right button



Bottom-right button



Pin-hole soft reset button, as described above.

- To restart the device, either attach the Device/USB cable or initiate a soft reset. The device will walk you through a series of steps, including a touch screen calibration and a practice cut-and-paste task. Use the stylus provided to perform these tasks. The Solmetric SunEye™ application launches automatically at the end of the tasks. Please ignore the message regarding the unrecognized SD card. This is normal.

NOTE For “SunEye-100N v2” and “SunEye-110N” devices, please ignore the “Formatting PS...” message in the initial screen, this is normal. If in the initial screen, the progress bar is complete and the hard reset does not continue, do a soft reset. When asked to set up a password, select “Skip” to not set a password.

NOTE For “SunEye-100N” devices, a hard reset automatically occurs if the battery is completely depleted.

NOTE No session or skyline data is lost during either a hard or soft reset, however the date, time, and time zone state will be lost during a hard reset.

NOTE The battery in the Solmetric SunEye™ is not removable. It may be recharged by attaching the device to a PC via the Device/USB cable or by using the wall-plug. For proper operation it is important to maintain the charge of the battery. Prolonged storage will result in the slow discharge of the battery. After a prolonged period of storage, connect the charger or Device/USB cable before powering on the device. It is preferable to leave the device always plugged in to maintain charge when not in use.

Contact Information for Service, Technical Assistance, and Sales

At Solmetric we constantly strive to improve our products. If you have experienced problems with your Solmetric SunEye™, we would greatly appreciate your feedback.

For 24 hour self-help technical support, visit our online Knowledge Base at <http://www.solmetric.com/knowledgebase.html>.

If you experience a software issue please report any messages you received from the software and a list of steps leading up to the problem as well as the battery level of the device and the version number of the software. The version number

can be found in the utility menu  > **About Solmetric SunEye...**

If you experience problems with the automatic open sky detection incorrectly identifying the open sky, please send us the original full fisheye image by exporting the session, and locating the image called SkyXXFullFishEye.jpg in the Exported Files subdirectory. XX is the skyline name (for example 01, 02...). Please also report the version number of the software. The version number can be found in

the utility menu  > **About Solmetric SunEye...**

Corporate Contact Information:

Solmetric Corporation

825 Olema-Bolinas Rd
Bolinas, CA 94924 USA
Tel: +1-415-868-9950
Fax: +1-877-263-5026
Toll-free in US: +1-877-263-5026
email: info@Solmetric.com
Web: www.solmetric.com

Distribution Partners

In the United States and Canada:

DC Power Systems
103 West North Street
Healdsburg, CA 95448 USA
Tel: +1-707-433-5824
Fax: +1-707-433-5698
Toll-free in US: 1-800-967-6917
Email: sales@dcpower-systems.com
Web: www.dcpower-systems.com

In France:

SJC Consulting
54 rue Alphonse Daudet
84120 Pertuis, France
Tel +33 6.19.69.56.74
Email: jean-claude@solmetric.com
Web: www.solaire-mesure.com

In Germany:

Soleg GmbH
Fachschulstr. 13
D-94227 Zwiesel, Germany
Tel: +49 9922 5007-0
Fax: +49 9922 5007-29
Email: info@soleg.de
Web: www.soleg.de

In Spain and Portugal:

Ecoesfera Renovables, S.L.
Malvasia 14, Nave 2 - Polígono El Clot de Moja
08734 Olèrdola (Barcelona)
Spain
Tel: +34.93.817.46.67
Fax: +34.616.10.41.10
Email: jmunte@ecoefera.net
Web: www.ecoesfera.net

In the United Kingdom and Republic of Ireland:

Encraft, Ltd.
6b Park Street
Leamington Spa
CV32 4QN
United Kingdom
Tel: +44 1926 312159
Fax: +44 1926 882636
Email: enquiries@encraft.co.uk
Web: www.encraft.co.uk

In Southeast Asia:

Renewpower Technologies PTE LTD
141 Kaki Bukit Avenue 1
#04-00 Shun Li Industrial Park
Singapore 416005
Tel: +65 6741 7123
Fax: +65 6441 7379
Email: rpt@renewpowers.com
Web: www.renewpowers.com

In Australia and New Zealand:

Solar Inverters Pty Ltd
30 Osprey Drive
Urunga NSW 2455
Australia
Tel: +61 2 6655 3930
Fax: +61 2 6655 3940
Email: sales@solarinverters.com.au
Web: <http://solarinverters.com.au/>

Index

- about Solmetric SunEye, 36**
- accuracy, 22**
- ActiveSync, 4**
- ActiveSync/USB port**
 - applying power via, 14**
 - charging battery via, 13**
- add**
 - obstruction, 28**
 - open sky, 28**
- air quality, 53**
- align touch screen, 34**
- ambient light, 30**
- annual solar access, 25**
- annual sunpath**
 - clock time, 25**
 - options, 26**
 - solar time, 25**
 - view, 25**
- assumptions**
 - in calculations, 55**
- atmospheric pressure, 55**
- atmospheric temperature, 55**
- average solar access, 27**
- azimuth, 52**
- backlight, 7**
- bar chart, 26**
- battery**
 - capacity, 13**
 - charging, 13**
 - level, 13, 56**
 - removal, 13**
- browse**
 - session, 33**
 - skyline, 33**
- bubble level, 22**
 - orientation, 22**
- button**
 - five-way navigation, 8**
- capture a skyline, 20**
- charging battery, 13**
- Clean Power Estimator, 49**
- clear all text, 16**
- clearness index, 53, 55**
- clouds, 53**
- comma-separated-value data, 44**
 - average shading, 50**
 - average solar access, 49**
 - daily solar access, 45**
 - importing, 44**
 - insolation, 47**
 - obstruction elevations, 48**
 - reading into other software, 44**
 - shading, 46**
- compass, 22**
 - magnetic declination, 22**
 - orientation, 22**
- cover, 9**
- daily solar access, 45**
 - data file, 45**
- data**
 - export, 41**
 - skyline measurement, 24**
- date**
 - setting, 14, 35**
- Desktop Companion software, 38**
 - export, 41**
 - installation, 5**
 - launching, 38**
 - menu, 39**
 - minimum system requirements, 5**
 - transfer data, 39**
 - update, 56**
 - viewing data, 39**
- downgrade software, 57**

SOLMETRIC SUNEYE™ USER'S GUIDE

edit

- edit tool, 28**
- obstruction paint brush, 29**
- obstructions, 28**
- open Sky, 28**
- open sky paint brush, 28**
- outside sunpath region, 30**
- paint brush size, 29**
- zoom & pan, 31**

export, 41

- Clean Power Estimator, 49**
- comma-separated-value data, 44**
- data, 41**
- data tables, 44**
- OnGrid, 46**
- PVOptimize, 46**
- Quick Quotes, 49**
- report, 41**

features, 3

feedback, 60

file management, 33

fish-eye view, 27

five-way navigation button, 8

full fish-eye image, 27

GPS, 10

- acquire session location, 19**
- acquire skyline location, 23**
- battery, 11**
- Bluetooth Partnership, 12**
- controls, 10**
- LED display, 10**
- power switch, 11**
- setup, 35**

hard reset, 58

help, 6

home and property inspection, 2

HP iPAQ, 8

images, saving, 43

import

- Clean Power Estimator, 49**
- OnGrid, 46**
- PVOptimize, 46**
- Quick Quotes, 49**

insolation, 51, 53, 55

- data file, 47**

installation of software, 5

irradiance, 51

keyboard, 16, 17

latitude

automatic look up, 18

- manual entry, 19**

level, 22

logo, 43

longitude

automatic look up, 18

- manual entry, 19**

magnetic declination, 22

automatic look up, 18

- manual entry, 19**

magnify, 31

maintenance, 56

manual and user's guide, 5, 6

menu, 8, 14

monthly solar access view, 26

multi-skyline averages, 27

NASA, 53

navigation button, 8

neck strap, 8

new skyline, 20

northern hemisphere, 22

NREL, 53

obstruction

- add, 28**

- identification, 23**

- remove, 28**

- verification, 23**

obstruction elevations

- data file, 48**

- XML file, 49**

OnGrid, 46

open sky

- add, 28**

- identification, 23**

- remove, 28**

- verification, 23**

options

- annual sunpath months, 26**

orientation of compass, 22

orientation of surface or panel, 54

pan tools, 31

panel orientation, 54, 55

passive solar, 1, 2

power button, 7, 11, 14

power cable, 14

print report, 43

property inspection, 2

PVOptimize, 46

Quick Quotes, 49

SOLMETRIC SUNEYE™ USER'S GUIDE

remove

- obstruction, 28**
- open sky, 28**

report

- browse, 43**
- client information, 41**
- comma-separated-value data, 44**
- company logo, 43**
- company name, 42**
- convert to other formats, 43**
- customize, 41**
- emailing, 44**
- exporting & generating, 41**
- name of report, 41**
- printing, 43**
- raw data, 44**
- save images, 43**

reset, 58

Sandia, 55

save images, 43

scroll text, 16

session

- browse, 34**
- browse in Desktop Companion, 40**
- change info, 19**
- change location, 19**
- definition, 33**
- delete, 34**
- export data, 41**
- export report, 41**
- latitude, 19**
- location, 17**
- longitude, 19**
- magnetic declination, 19**
- name, 15**
- new, 15**
- note, 17**
- open, 34**
- properties, 19, 34**
- skyline averages, 27**
- time zone, 20**

shade-causing obstruction, 1

- add, 28**
- identification, 23**
- remove, 28**
- verification, 23**

shading, 53

- data file, 46**

shoulder strap, 4

sites, 2

skyline

- averages, 27**
- browse, 34**
- browse in Desktop Companion, 39**
- capture, 20**
- definition, 33**
- delete, 23, 34**
- edit, 28**
- measurement data, 24**
- new, 20**
- note, 23, 34**
- open, 34**
- save, 23**

Snap, 23

soft reset, 4, 58

software downgrade, 57

software update, 56, 57

software upgrade, 57

solar access

- annual, 25**
- averages, 27**
- comma-separated-value data, 44**
- daily, 45**
- export data, 41**
- monthly, 26**
- percentage, 26**
- raw data, 44**
- seasonal, 25**
- variables that affect, 51**

solar constant, 55

solar energy, 51

solar irradiance, 51

solar panel, 1, 2

- solar panel orientation, 54**

Solmetric SunEye features, 3

southern hemisphere, 22

storing data, 39

SunEye features, 3

sunpath

- clock time, 25**
- options, 26**
- solar time, 25**
- sunpath diagram, 52**
- view, 25**

support, 60

- technical support, 61**

surface, 21, 54

system

SOLMETRIC SUNEYE™ USER'S GUIDE

- time zone, 14, 20**
- technical | support, 61**
- time**
 - setting, 14, 35**
- time zone, 14, 20**
 - setting, 14**
- time-of-use analysis, 46**
- touch screen, 7**
 - align, 34**
- transferring data, 39**
- troubleshooting, 56**
- update software, 56, 57**
- upgrade software, 57**
- USB**
 - ActiveSync/USB port, 4, 10, 11**
 - applying power via, 14**
- user's guide, 5, 6**
- user's manual, 5, 6**
- utility, 14, 34, 36**
 - about Solmetric SunEye, 36**
 - align touch screen, 34**
 - GPS setup, 35**
 - set time and date, 35**
- Valentin Energy Software, 49**
- version**
 - Solmetric SunEye, 36**
- view**
 - annual sunpath, 25**
 - fish-eye, 27**
 - monthly solar access, 26**
 - options, 26**
- weather, 53**
 - effects on solar access, 55**
- Windows XP**
 - Home, 5**
 - Media Center, 5**
 - Professional, 5**
- XML file**
 - obstruction elevations, 49**
- zoom and pan tools, 31**

