

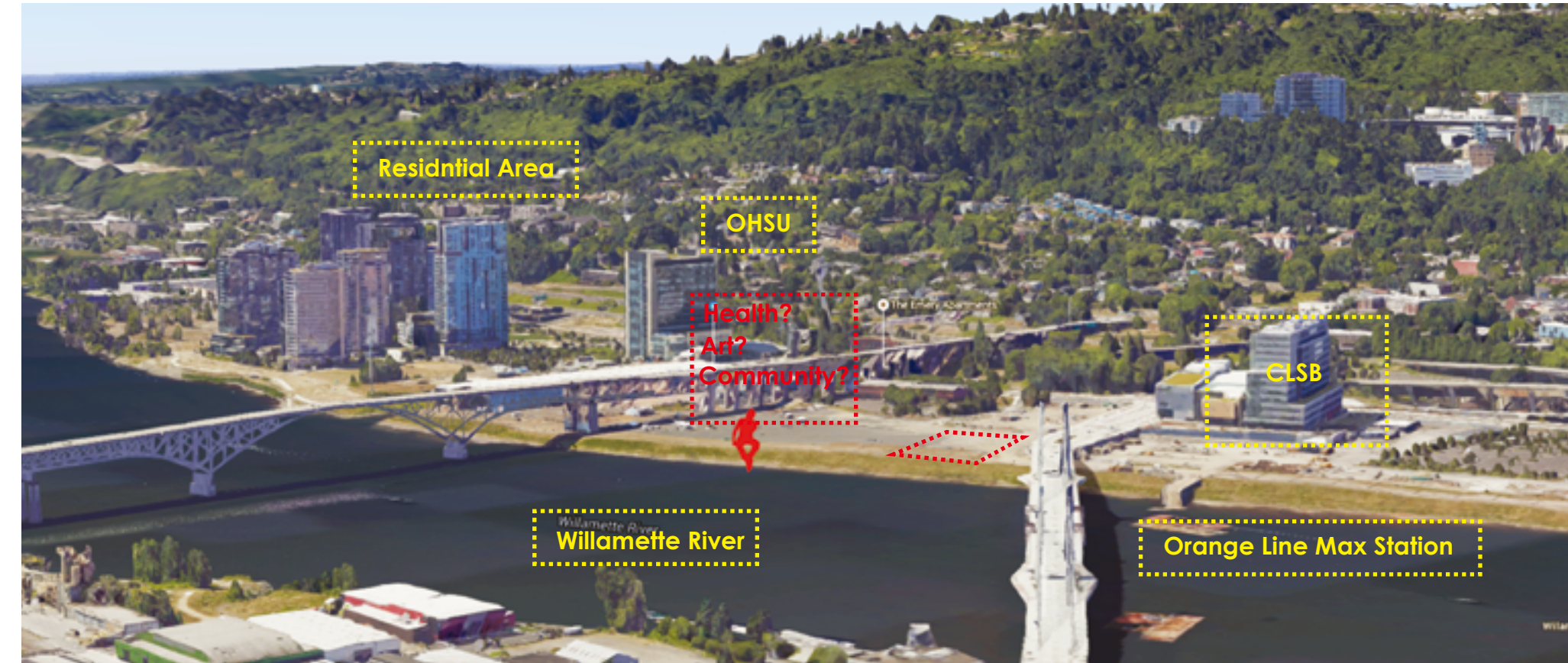
Art Community Center

Preface

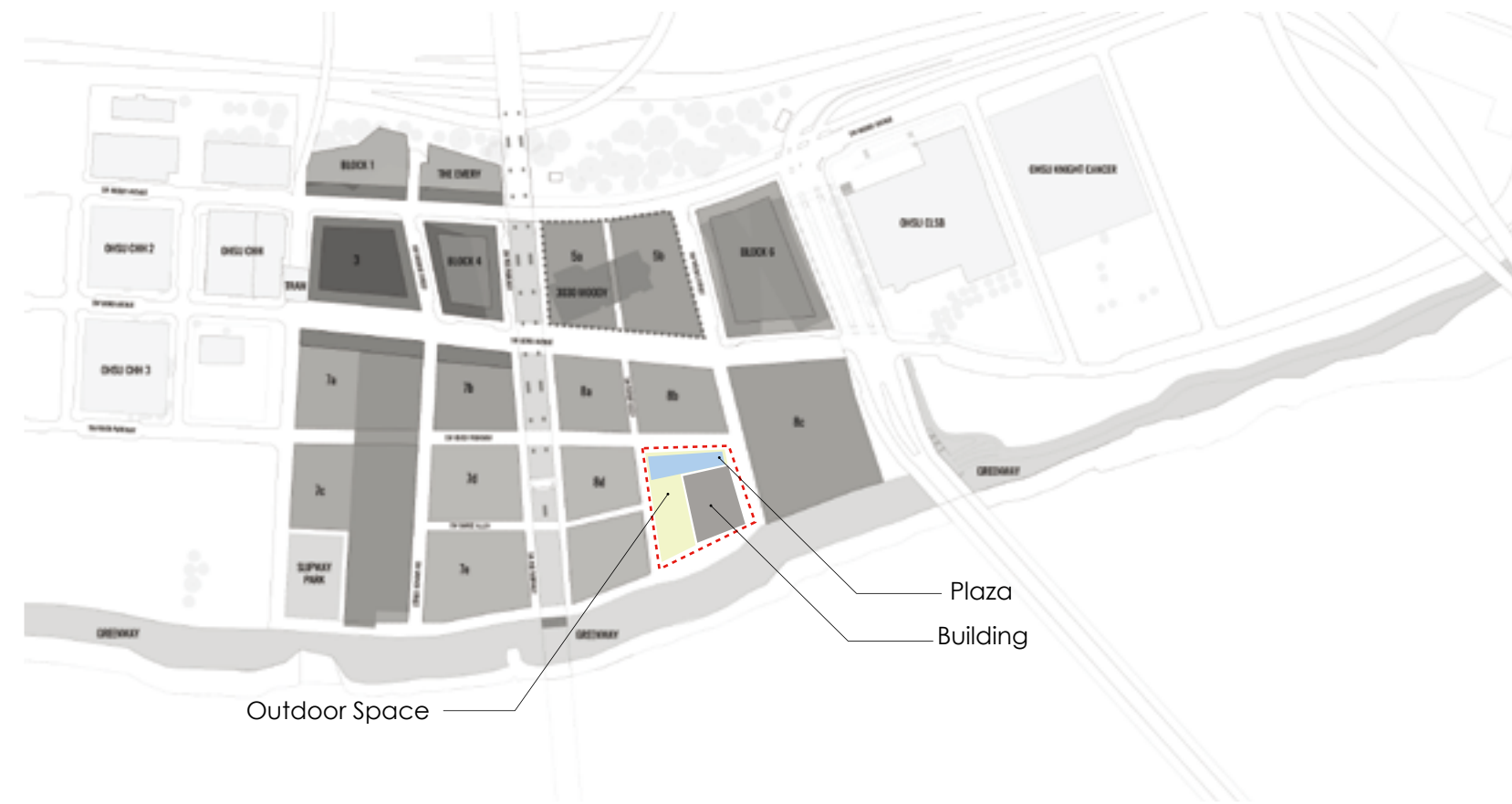
Science and art are the opposite in a lot of people's mind because of what they reflect, transform and express. Science is always objective but art subjective. Without science, our society will not forward and our thinkings will not be heard by the culture. But without arts, people will have no personality and diversity in different fields will be pale. No one can really get to a perfect point without aesthetic standpoint. So how to make a balance between the two sides is always been the philosophers' survey.

Portland is such a city in which we need to find out a balance for science and art. Willamette river flows through this beautiful city. It is a gift that the Nature give to people. Currently, people faces it everyday but most of them ignore its beauty and be disturbed by the eastern manufacturing area scenery. The beauty of water connecting city will never be realized until we can build something to enhance the function of connection, communication and collaboration of both sides and make them vivid. According to the Zidell's 20years master plan, this Art community center, locating in south waterfront, which is near to a medical research and developing area of OHSU. In order to provide this community with a new way of living, we need to draw a new art facility which can serve as an art learning center, seniors' community as well as artists' studios and gallery. I try to use this project to attract more artists come to this community, collaborate with different background peers. Moreover, it is expected to achieve some social goals to "slow down" the working pace and encourage people to learn more about arts, perhaps some breakthrough will occurs when they inspired by another field people. By enhancing people's artistic accomplishment, more and more people would like to come and settle down. This facility can create a virtuous cycle for government to raise reputation.

Background

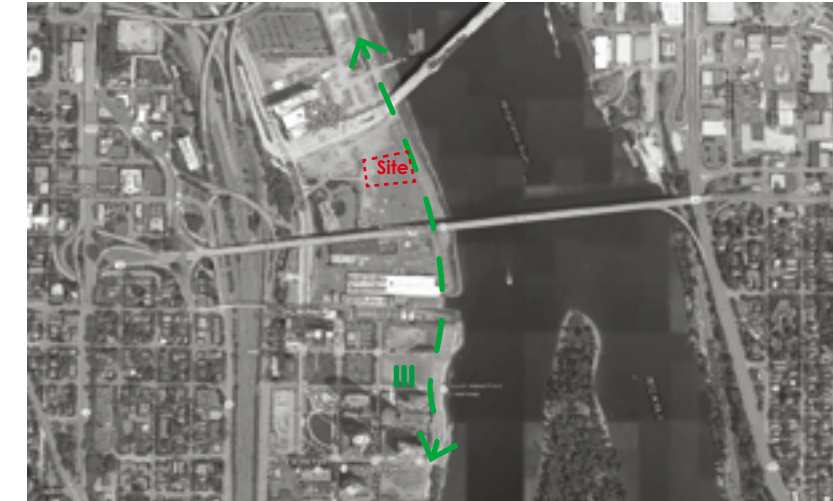


Site

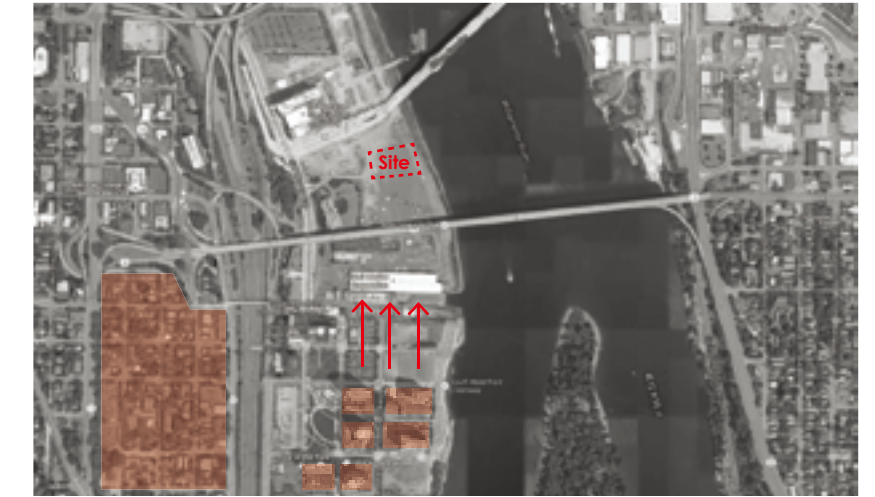


According to Zidell's Master plan, I chose part of 8e as my site and the area is almost 60000SF². Considering about the collaboration between health research and art, I want to use this Art Community Center as a good transition worked as an attractive public building in this area. Comparing with the high density of Zidell's Master Plan, this project with 50% floor ratio could bring more outdoor space and plaza which creates more pedestrian and transit friendly environment. Orange line provides tram stop and bike route. Art Community Center could be access both from north side which close to the Orange Tram stop and east greenway area.

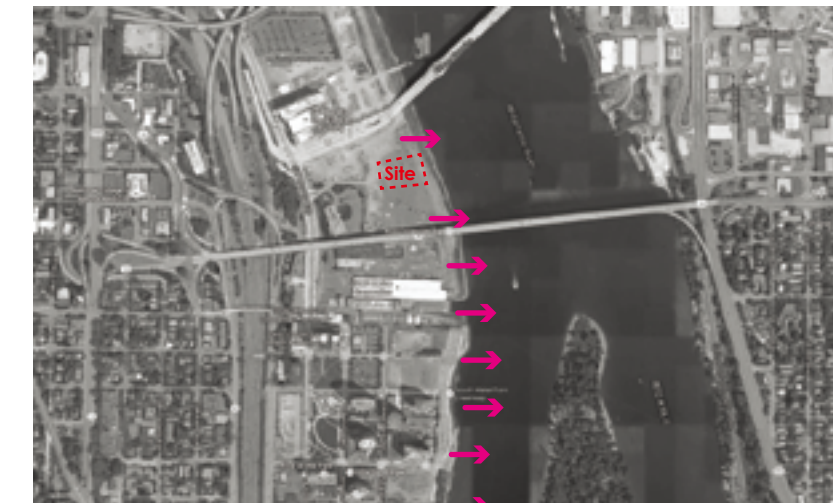
Site Conditions



Greenway



Residential Area



Scenic Value



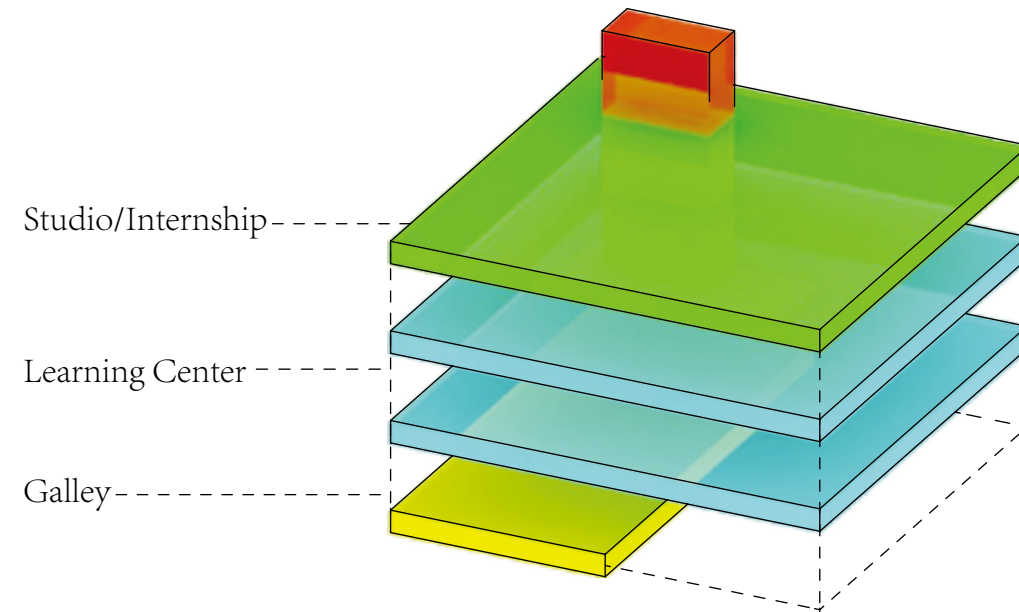
Orange Line Max Station

On my site, South Waterfront Apartments provide the area for activities and communication. People gather at greenway which is close to the river, enjoying these beautiful natural views. It brings scenic value and huge potential for human behaviors. Thus, people sit down on the chair or jogging along the greenwalk currently. I wish there would be more facilities to support this kind of human behavior like the ramp to reach the water, food services and the available decks on the river. Standing on the west side of water, watching the bridge which is connection between east and west, I even can see after several years later, the spectacular landscape in this area. The other thought is the transportation determine the land use. The newly opened Orange Line Max Station is quite close to the site, people will arrive easily without driving. The racks are available showing the care for bicycle users.

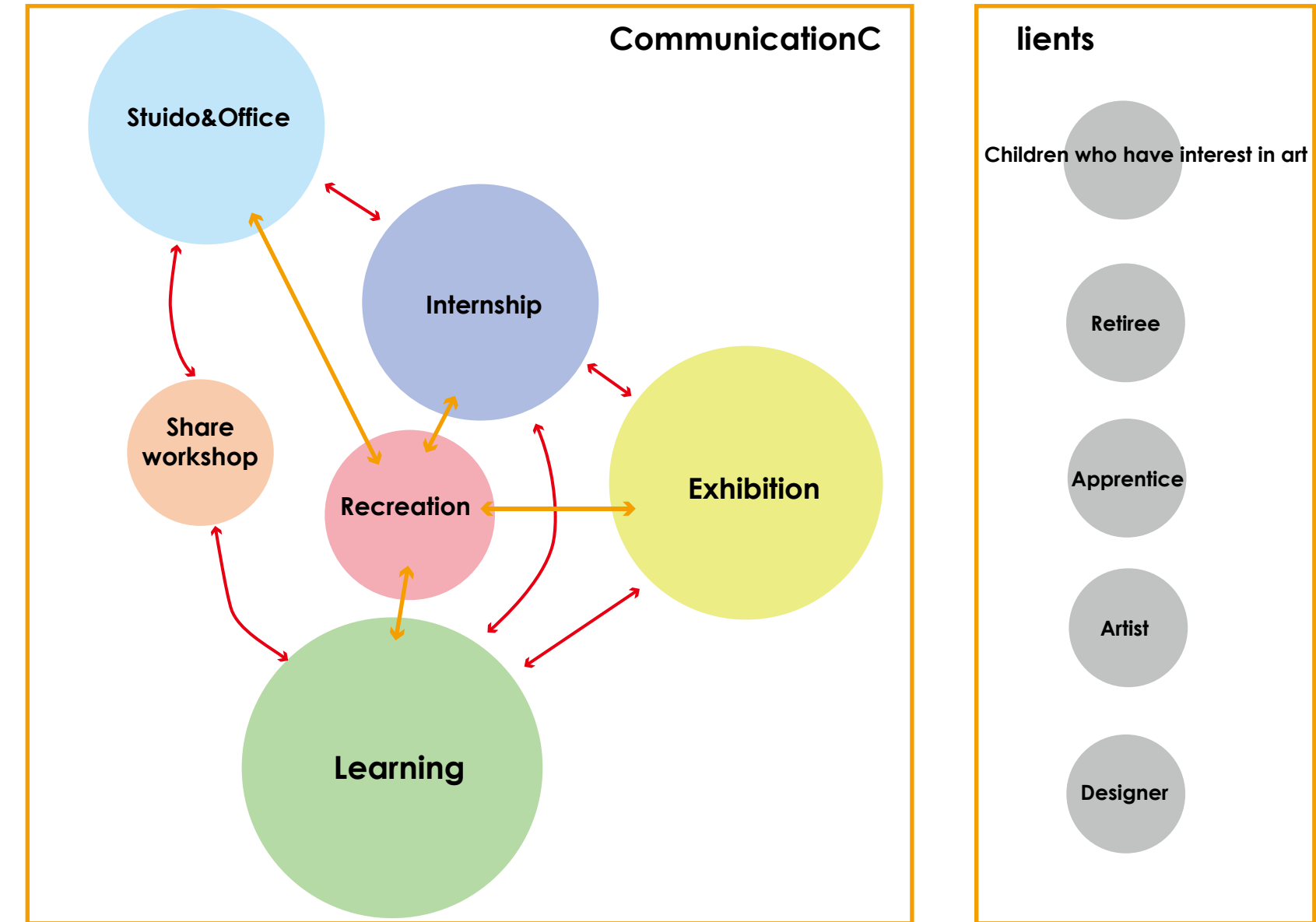
Project Statement

My project investigates the "Art Community Center" which starts from the location of South Waterfront beautiful green belt and Willamette River. The South Waterfront is located in the significant joints between west and east part, which surrounded by the residential area, the site provides an amount of people resources, like those senior people who have great personal experiences and want to share with other people who want to learn some specific craft skills and create some interesting components and artist and designers who start their own business from studio. It is a nice place for people gathering here to communicate and learn from each other. Some working spaces like Tech shop will be provided, they run like a gym membership where members pay a monthly fee to have access to wide range of machine tools and rapid prototyping equipment.

The Art Community Center is open to all ages who want to learn and make other own stuffs. The project focus on keeping traditional handwork art skill, encouraging people gathering here to set up a great social space and contributing some craft local business. A temporary exhibition will be designed to exhibit the works from current users, and a permanent exhibition will provide some collection about the art history of Portland.



How it works



Programing

Learning Center

Items	Area	Number	Total
Classroom	600SF	8	4800SF
Lecture Hall	1000SF	2	2000SF
Auditorium	4000SF	1	4000SF
Working Place	1000SF	2	2000SF
Flexibility space	2000SF	1	2000SF
Wood Craft Lab	2000SF	2	4000SF
Computer Lab	400SF	4	1600SF
Outdoor Activity	4000SF	1	4000SF
Total			24400SF



<http://www.alamy.com/stock-photo/hammam-turkey.html>

Support Area

Items	Area	Number	Total
Library	4000SF	1	4000SF
Recreation	1000SF	3	3000SF
Bookstore	2000SF	1	4000SF
Lobby	1000SF	1	2000SF
Cafe	2000SF	1	2000SF
Restroom	200SF	3	600SF
Storage	200SF	10	2000SF
Mechanical	400SF	1	400F
Adminstration(Office)	200SF	4	800SF
Total			18800SF



<http://bldg92.org/visit/cafe-rental-facilities/>

Creativity Studio/Internship

Items	Area	Number	Total
Office&Studio	600SF	12	7200SF
Conference	200SF	4	800SF
Total			8000SF



<http://www.alamy.com/stock-photo-dala-horses-and-other-handcraft-inside-amandas-gift-shop-on-drottninggatan-8143376.html>

Galley&Museum

Items	Area	Number	Total
Temporary Exhibition	2000SF	2	4000SF
Permanent Exhibition	2000SF	2	4000SF
Outdoor Exhibition	4000SF	1	4000SF
Total			12000SF



<http://www.ecofriend.com/solar-blossom-a-solar-powered-temporary-outdoor-gallery-space.html>

Precedent Study

Vilhelmsro Skole / BIG

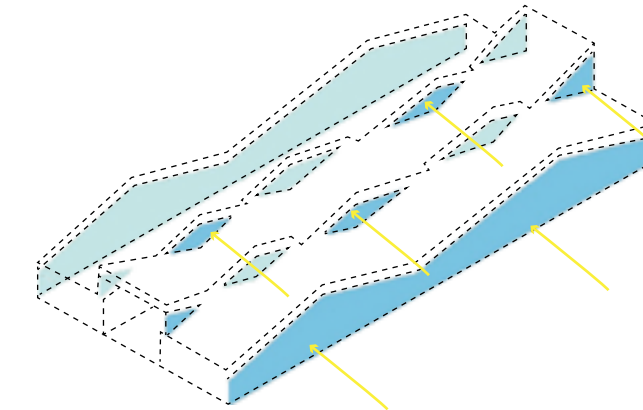
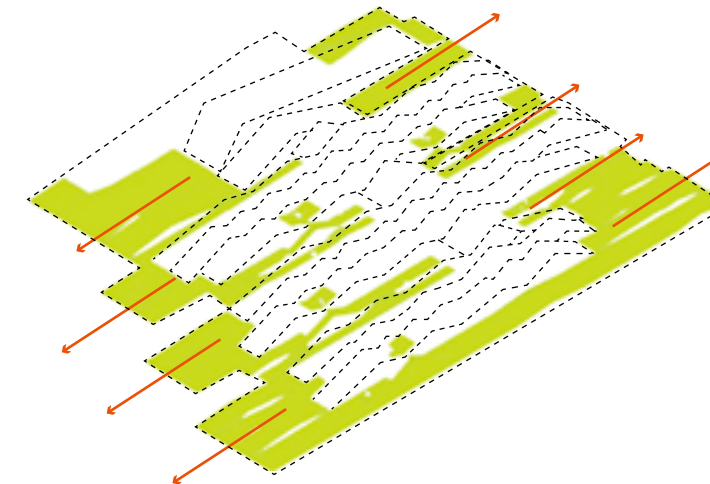
70,000 SF School Prject in Denmark

A pristine undulating hillside serves as the backdrop for the future Vilhelmsro school and its outdoor activities. The sloping landscape and the building's sloping roofs merge into one continuous experience no matter if one is inside, outside, on the ground floor or walking across its green roofs. The surrounding landscape does not only serve as an aesthetic backdrop, but is also integral to the school's curriculum which focuses on nature and sustainability. Formed as sloping landscaped bands, the building merges with the surrounding nature and allows daylight to stream into all of the school's class rooms.

From this project, I learned a very interesting way to engage outdoor and indoor space with courtyard, and the nature light could be accessed by making full use of this wave form.



<http://www.archdaily.com/94566/vilhelmsro-skole-big/big-vil-school-exterior-03>



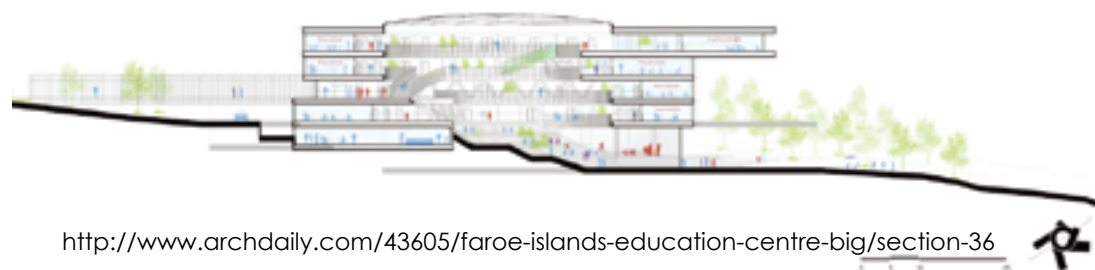
<http://www.archdaily.com/94566/vilhelmsro-skole-big/big-vil-school-courtyard-03>



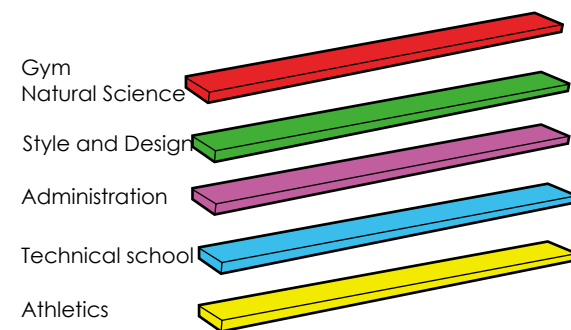
<http://www.archdaily.com/94566/vilhelmsro-skole-big/big-vil-school-home-area-03>



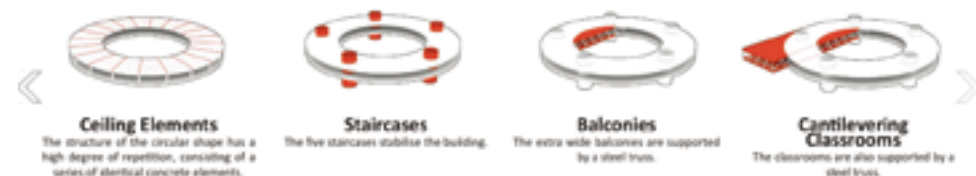
http://www.archdaily.com/43605/faroe-islands-education-centre-big/faer_image-by-bigfuglark_01



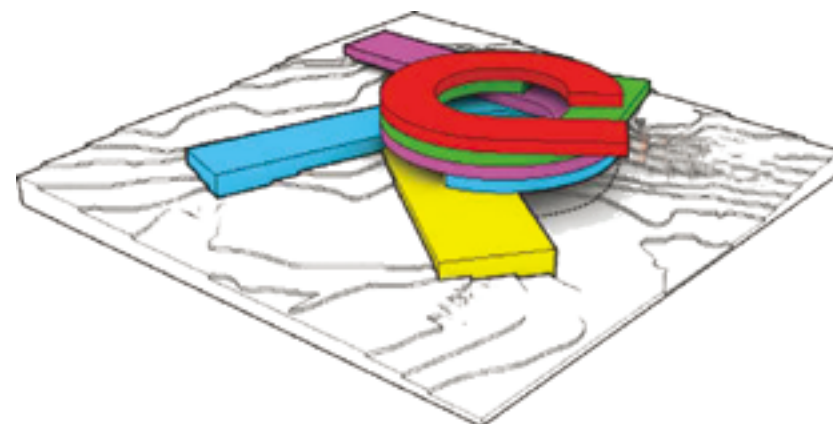
<http://www.archdaily.com/43605/faroe-islands-education-centre-big/section-36>



The schools are stacked and twisted, generating a central patio which will be the main gathering space of the center. Each of this programmatic stripes is then open to the landscape, getting the most out of its location on a hillside with views over the sea, mountains and the harbor. A very simple scheme, which I like a lot as it doesn't fragment the public space.



http://www.archdaily.com/43605/faroe-islands-education-centre-big/structure_diagram



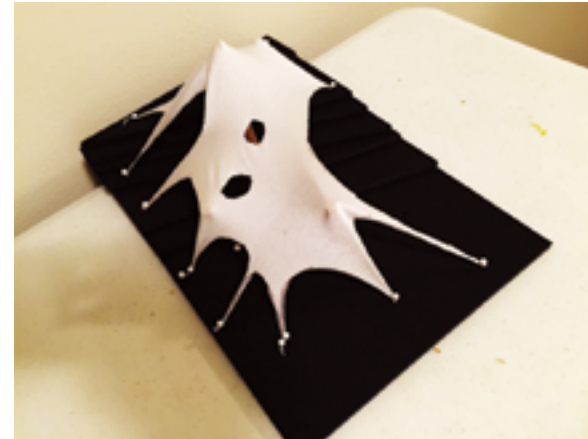
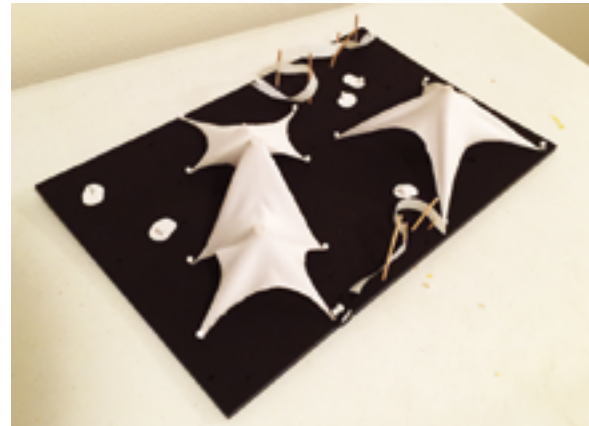
Wood Joints



I was trying to use the material itself strength to support the cantilever potential. Make the whole system stable and try to create a wood joints unit is my inspiration in this part.

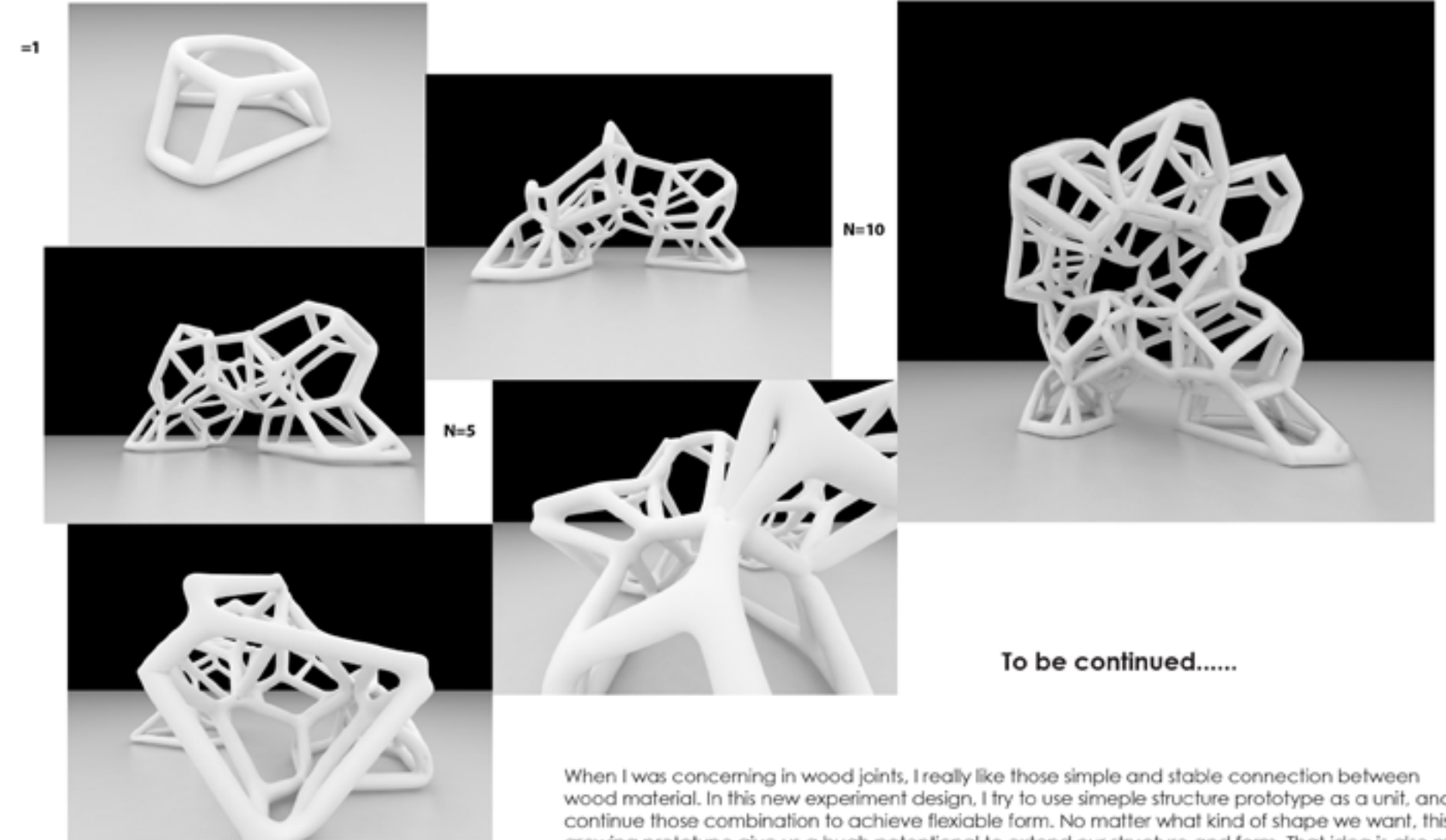


Metaphor



Start from exploring tensile structure, like a skin the earth, buildings need "skin" to cover and project its inside function. The potential space underneath its structure and the certain space nearby is the vocabulary I want to express.

Growing Prototypes



To be continued.....

When I was concerning in wood joints, I really like those simple and stable connection between wood material. In this new experiment design, I try to use simple structure prototype as a unit, and continue those combination to achieve flexible form. No matter what kind of shape we want, this growing prototype give us a high potential to extend our structure and form. That idea is also my revised metaphor for my project. The structure bring the future form of building, it could be growing