

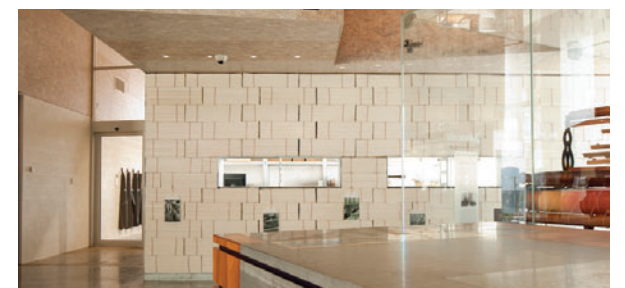
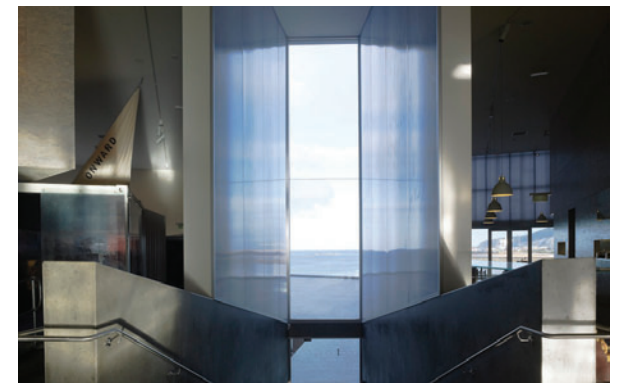
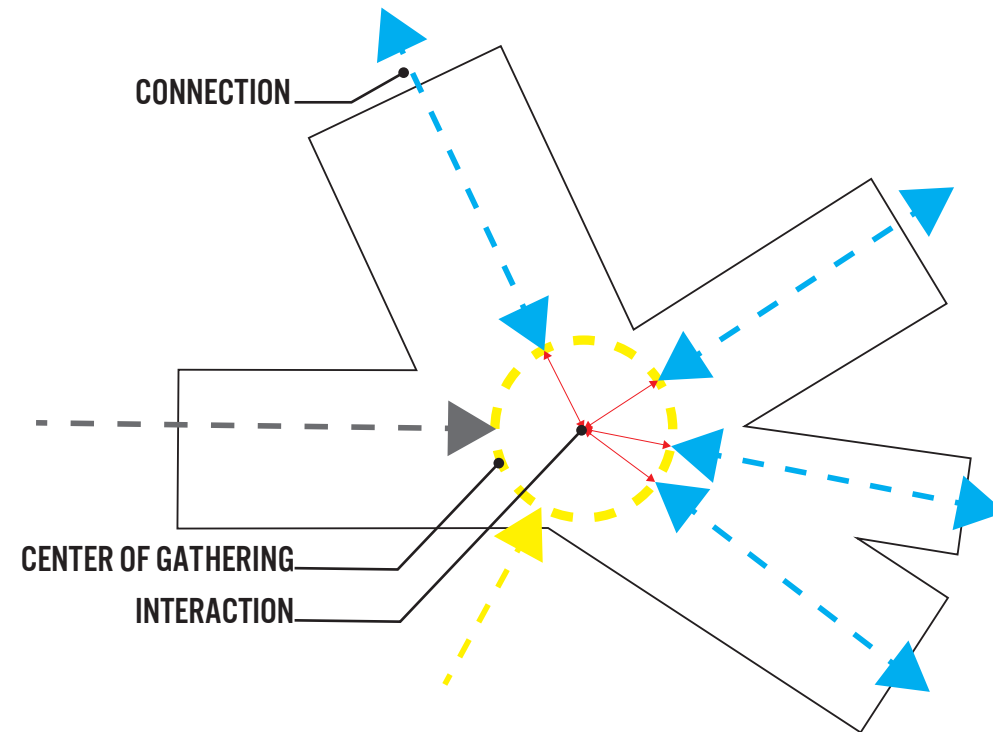
Burnie Makers' Workshop/TERROIR

| | |
|----------------|-------------------------|
| ARCHITECTS | TERROIR |
| LOCATION | BURNIE TAS, AUSTRALIA |
| CLIENT | BURNIE CITY COUNCIL |
| PROJECT BUDGET | \$4.2 MILLION |
| AREA | 1500 SQ M, 16,146 SQ FT |
| PROJECT YEAR | 2009 |

The combination of industry and museum, the Makers' Workshop is meant to be the living room of the town. The programs included are: back of house, paper-making workshop, multipurpose exhibition/theater, café and a combined retail/gallery space. The local makers can also rent out the space to work and interact with the public.

This project is interesting due to its nature location next to the water. As an industrial town, the use of water edge is similar to most water front cities in Pacific North West—industrial. While developing the water front for more luxurious life style, how to preserve the trace of history is another important challenge. Like how City of Seattle preserved Gas Works and turn it into a famous park worldwide. City of Portland has the same opportunities to preserve its former industrial land for the later generation to learn the history of Portland. It is important to keep the connection of the past and now so the city and the citizens can keep its identity and stay unique from other cities.

This project is a single multipurpose building that creates an environment where the visitors from outside the town can interact and learn with the activities of the local. City of Portland is a creative city incubating many creative professionals. Within, there's many artist and handcraftsmanship. Although the development of fast and efficient economy never gets old, the focus on the handcraftsmanship has its growing demand, too. How can we embrace the local craftsmen and promote them to a more public accessible environment is the major challenge of the project.



DockMalraux

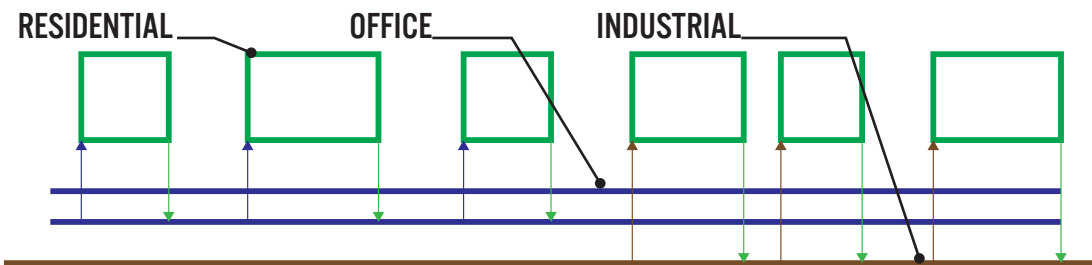
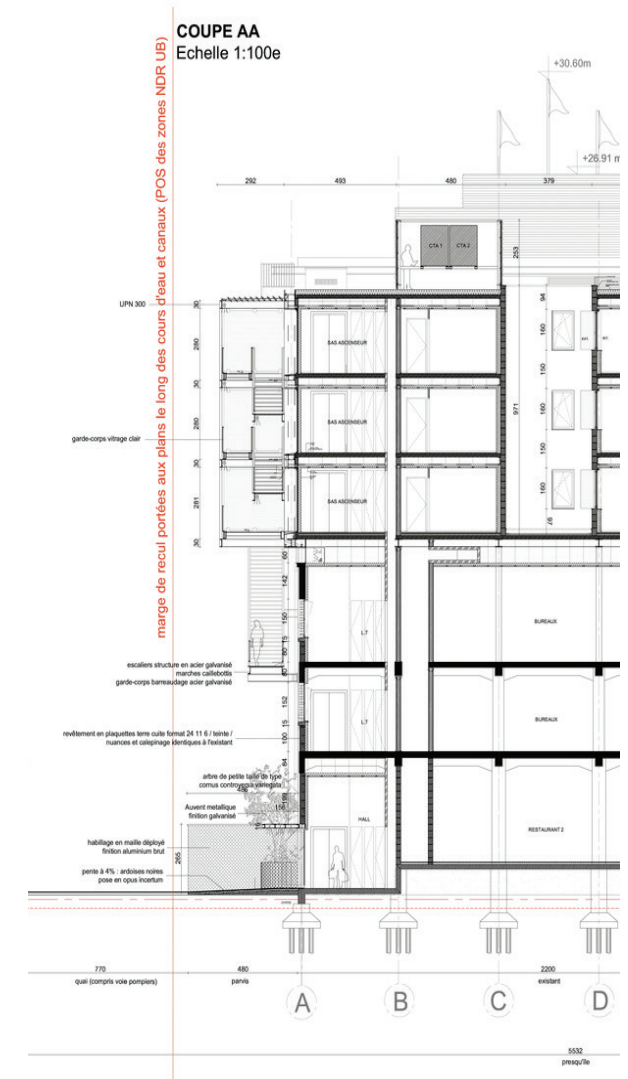
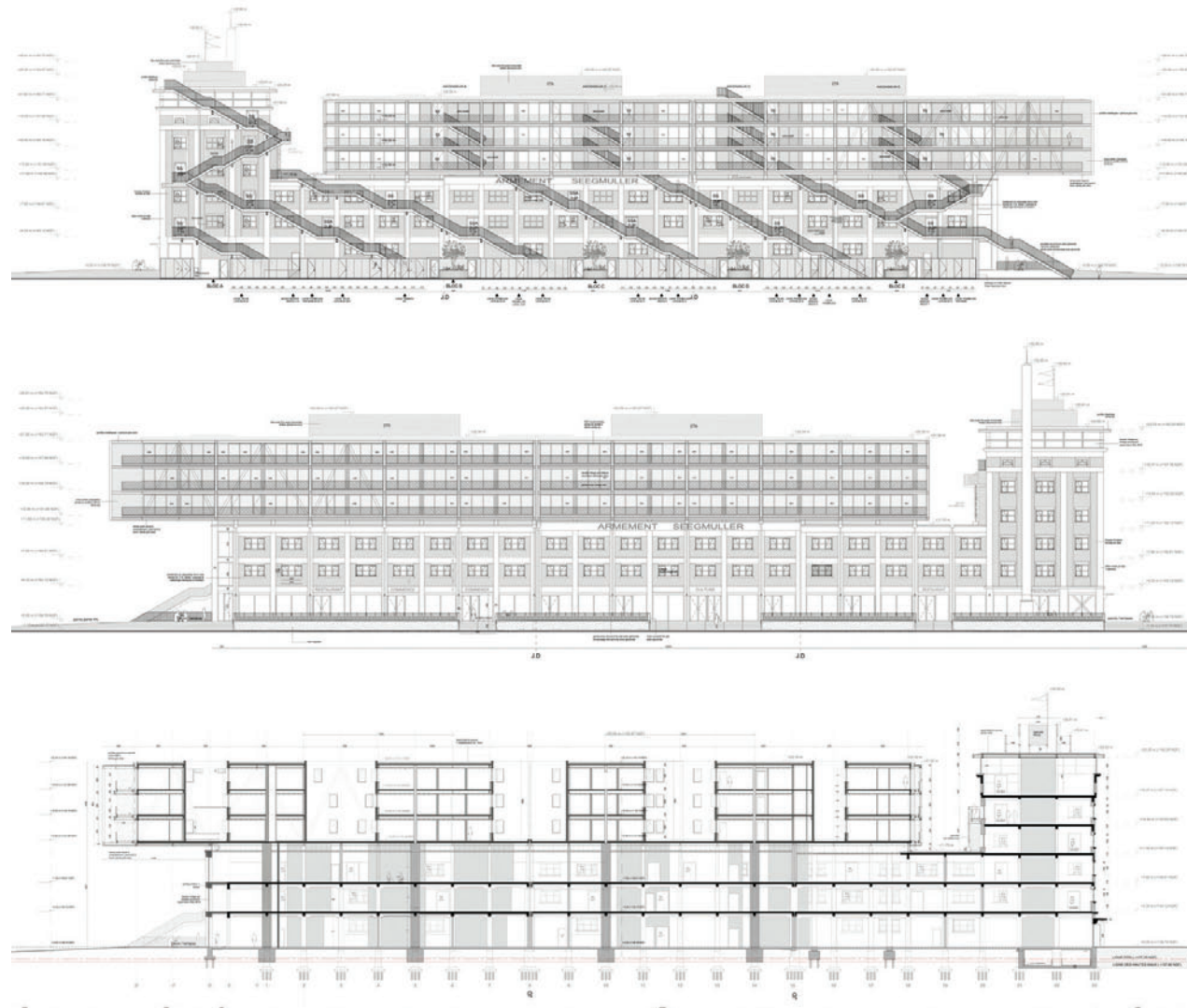
ARCHITECTS Heintz-Kehr Architects
LOCATION Strasbourg, France
AREA 124,861 sqf
PROJECT YEAR 2014

Preservation of old industrial building with new residential added on top of an old structure. This Dock Malraux is an example of historical preservation and modern mixed-use. The program included the open spaces, which is essential for industrial use. The new additions are for residential while the lower part is open for offices.

This building intrigued me because the way it preserves the old industrial building and make it mixed used. In City of Portland, the industrial site is usually set apart from the residential area. This creates a barrier between people who lives in the city and the work force from the industrial area. While many cities tend to separate residential and industrial for safety and noise reasons, this project presents an opportunity to combine the office workforce into the heart of the industrial zone, and help both to learn and appreciate each other.

As Portland is known for its unique texture in the industrial history, the project Dock Malraux sets up a good example for the new generation to co-exist with each other and live to learn appreciation for the history to continue.

resource:
<http://www.archdaily.com/775310/docks-malraux-heintz-kehr-architects>



SELF SUSTAINABLE, WORK-LIVE ENVIORNMENT

TOG FLAGSHIP/TRIPTYQUE + PHILIPPE STARCK

Architect Triptyque, Philippe Starck
Location Rua Iguatemi, 236 – Itaim Bibi, Sao Paulo , Brazil
Area 22,690 sqf
Project Year 2015

The project TOG Flagship is a mixed use building that makes, design, and sells furniture. The design of the project allows designers, artist and client to meet and design furniture that is most suitable for the client. The open space holds café, furniture display, office, design studio and furniture making shop.

Multi use and purpose spaces are very important to keep a place lively. As we often seen in the factories in the industrial zone, the places are usually designated for heavy duty works, like the shops should be separate from where people rest and eat. How about we mix them together by providing a well-insulated space for furniture to make the furniture while the clients watching it happen? It seems to be a good idea for the client to get involved with the making process, from the early design to the making and to the final product. This can be a valuable lesson for Portland to learn about how to transform their industrial uniqueness into everyday life for the residences.

resource:
<http://www.archdaily.com/643171/tog-flagship-triptyque>

